

FLU EXPRESS

流感速遞

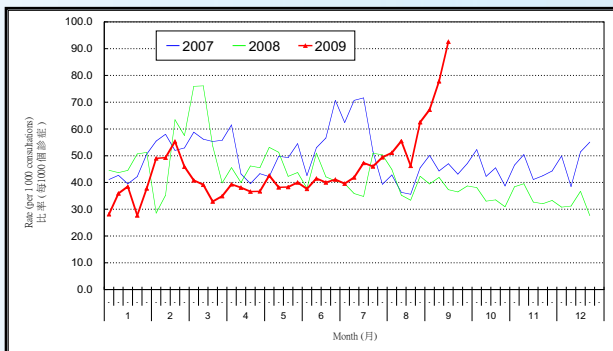


Flu Express is a weekly report for the influenza season 2008/09 produced by the Respiratory Disease Office of the Centre for Health Protection. It summarizes and monitors local and global influenza surveillance activities over the influenza season. 流感速遞是由衛生防護中心呼吸疾病辦事處每星期報告有關2008/09流感季節的資訊。流感速遞總結和監察本地及世界各地在流感季節的流行性感冒流行情況。

Situation in Hong Kong (As of Sep 17, 2009) 香港情況 (截至九月十七日)

Surveillance data showed that the activity of influenza remained active in Hong Kong.
監測數據顯示香港的流感活躍程度仍然活躍。

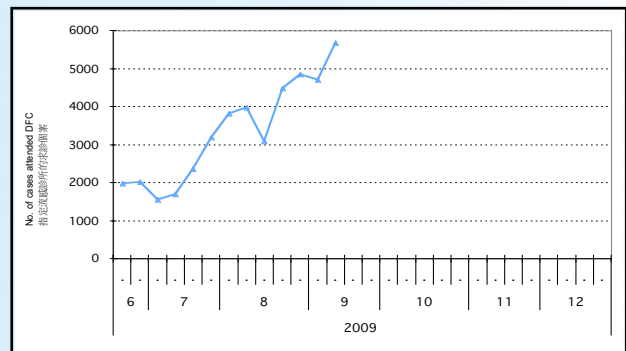
Figure 1: Influenza-like Illness Surveillance Among Sentinel Private Doctors, 2007-09
圖一: 定點私家醫生的流感樣病例監測, 2007-09



In week 37 (Sep 6 to 12), the average consultation rates for ILI among sentinel private doctors were 92.6 (per 1,000 consultations) (Figure 1).

第37週 (九月六日至十二日), 定點私家醫生呈報的流感樣病例個案平均數為92.6宗(每千名求診個案計) (圖一)。

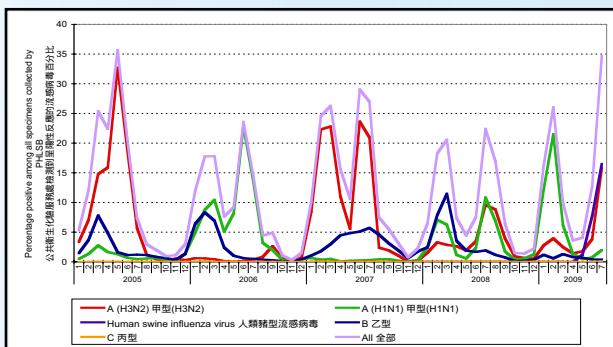
Figure 2: Influenza surveillance at Designated Flu Clinics (DFCs), 2009
圖二: 指定流感診所的流行性感冒監測, 2009



After activation of Designated Flu Clinics (DFCs) by Hospital Authority on Jun 13, 2009, there were 5682 cases with fever/respiratory symptoms attended DFCs from Sep 5 to 12 (week 37) (Figure 2).

自二零零九年六月十三日醫院管理局啟動指定流感診所後, 由九月六日至十二日 (第37週), 共有5682宗有發燒 / 呼吸道徵狀的個案到指定流感診所求診 (圖二)。

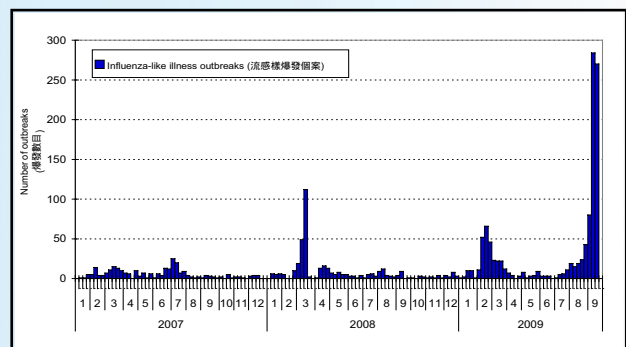
Figure 3: Percentage positive for Influenza virus by PHLSB, 2005- July 09
圖三: 公共衛生化驗服務處檢測到呈陽性反應的流感病毒百分比, 2005-09年7月



Among all specimens collected by PHLSB in July, the percentage positive for influenza A (H1N1), human swine influenza, influenza A (H3N2) and influenza B were 2.0%, 16.5%, 15.8% and 0.4% respectively (Figure 3).

所有在七月於公共衛生化驗服務處收集的樣本中, 2.0%、16.5%、15.8%及0.4%的樣本分別對甲型流感(H1N1)、人類豬型流感、甲型流感(H3N2)及乙型流感呈陽性反應 (圖三)。

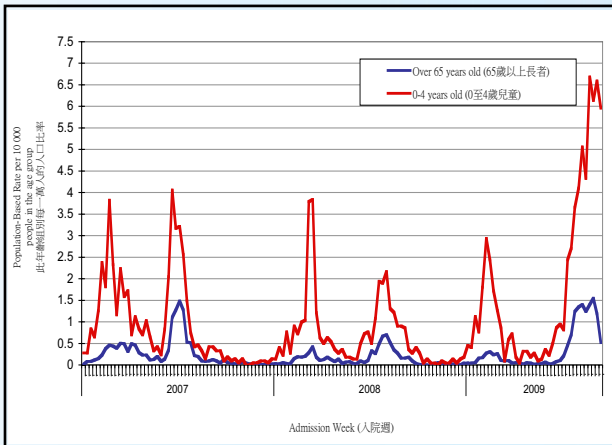
Figure 4: Influenza-like-illness Outbreak Monitoring, 2007-09
圖四: 流感樣爆發監測, 2007-09



In week 37 (Sep 6 to 12), there were 284 influenza-like illness (ILI) outbreaks received. In the first 5 days of week 38 (as of Sep 17, 2009), there were 270 ILI outbreaks received (Figure 4).

第37週 (九月六日至十二日), 本中心收到284宗流感樣爆發的報告。第38週的首5天 (截至九月十七日為止), 收到270宗流感樣爆發的報告 (圖四)。

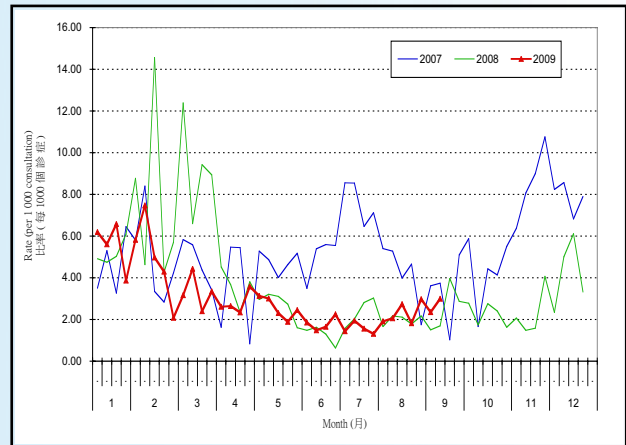
Figure 5: Hospital admission rates with principal diagnosis of influenza*, 2007-09
圖五: 主要診斷為流感的病人入院率*, 2007-09



In week 37 (Sep 6 to 12), hospital admission rate due to influenza for the elderly 65 years old or above was 0.52 (per 10,000 people in the age group) (blue line in Figure 5) and that for children aged 0 to 4 years was 5.96 (per 10,000 people in the age group) (red line in Figure 5).

第37週 (九月六日至十二日), 65歲或以上人士因流感而入院的人數為0.52 (此年齡組別每一萬人的入口) (圖五: 藍色線)。0至4歲小童因流感而入院的人數為5.96 (此年齡組別每一萬人的入口) (圖五: 紅色線)。

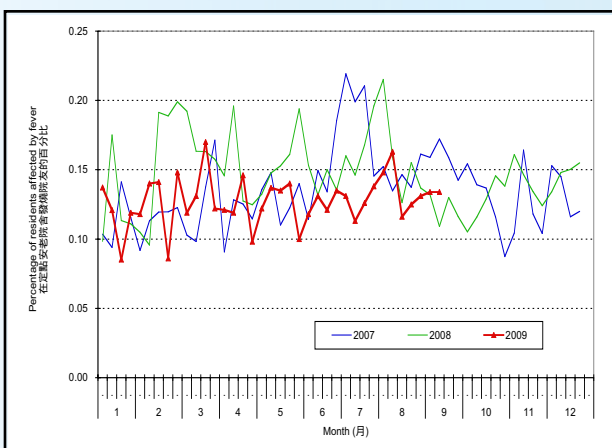
Figure 6: Influenza-like Illness Surveillance Among Sentinel Chinese Medicine Practitioners, 2007-09
圖六: 中醫師的疑似流感監測, 2007-09



In week 37 (Sep 6 to 12), the average consultation rates for ILI among Chinese medicine practitioners were 3.00 per 1,000 consultations (Figure 6).

第37週 (九月六日至十二日), 定點中醫師呈報的疑似流感個案平均數為3.00 (每千名求診個案計) (圖六)。

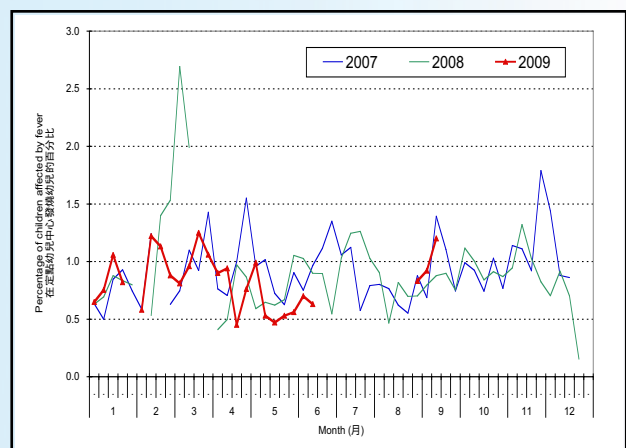
Figure 7: Fever Surveillance at Sentinel Residential Care Homes for the Elderly, 2007-09
圖七: 定點安老院舍的發燒監測, 2007-09



In week 37 (Sep 6 to 12), 0.13% of residents in the sentinel residential care homes for the elderly had fever (Figure 7).

第37週 (九月六日至十二日), 0.13% 定點安老院舍的院友出現發燒徵狀 (圖七)。

Figure 8: Fever Surveillance at Sentinel Child Care Centres, 2007-09
圖八: 定點幼兒中心的發燒監測, 2007-09



In week 37 (Sep 6 to 12), 1.20% of children in the sentinel child care centres had fever (Figure 8).

第37週 (九月六日至十二日), 1.20% 定點幼兒中心的幼兒出現發燒徵狀 (圖八)。

Report under paediatric surveillance programme

兒童監察安排

In week 37 (Sep 6 to 12), two new reports involving a 1-year-old boy and a 9-year-old boy were received. The specimens taken from them were tested positive to human swine influenza. They have recovered and discharged. As of Sep 17 (in the first 5 days of week 38), a new report involving a 7-year-old boy was received. The specimen taken from him was tested positive to human swine influenza. He is now in serious condition.

第37週(九月六日至十二日), 兒童監察安排收到兩宗新報告, 涉及一名一歲男童及一名九歲男童。兩名男童的樣本化驗結果均對人類豬型流感呈陽性反應及康復出院。截至九月十七日(第38週的首5天), 兒童監察安排收到一宗新報告, 涉及一名七歲男童。男童的樣本化驗結果顯示對人類豬型流感呈陽性反應。他現時情況嚴重。

Global Situation (As of Sep 5, 2009)

世界各地的情況(截至九月五日)

Activity of influenza increased in the US and remains similar to previous week in Canada. Influenza activity was low or moderate intensity across the Europe Region.

美國的流感活躍程度上升。加拿大的流感活躍程度跟上週水平相約。歐洲地區的流感活躍程度保持在低或中等水平。

Note: The data reported are provisional figures and subject to further revision.

註：現時報告的是臨時數據，數字會因更新的資料作出修訂。

Source of data:

CDC FLUVIEW; Public Health Agency of Canada FluWatch and Europe Influenza Surveillance Scheme. Hospital Authority(*); ILI consultations in Sentinel Private Doctors and General Outpatient Clinics; positive influenza detections from Virology Division of Public Health Laboratory Services Branch; notifications of influenza outbreaks received from the Centre for Health Protection; Sentinel Surveillance Systems at Child Care Centres (CCC); Sentinel Surveillance Systems at Residential Care Homes for the Elderly (RCHE).