

FLU EXPRESS

流感速遞

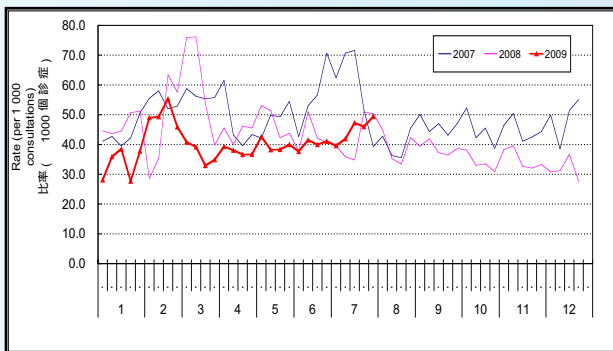


Flu Express is a weekly report for the influenza season 2008/09 produced by the Respiratory Disease Office of the Centre for Health Protection. It summarizes and monitors local and global influenza surveillance activities over the influenza season. 流感速遞是由衛生防護中心呼吸疾病辦事處每星期報告有關2008/09流感季節的資訊。流感速遞總結和監察本地及世界各地在流感季節的流行性感冒流行情況。

Situation in Hong Kong (As of Jul 30, 2009) 香港情況 (截至七月三十日)

Laboratory surveillance data showed that the activity of both influenza A (H3N2) virus and human swine influenza remained active in Hong Kong.
實驗室監測數據顯示香港的甲型流行性感冒(H3N2)病毒及人類感染豬型流感仍然活躍。

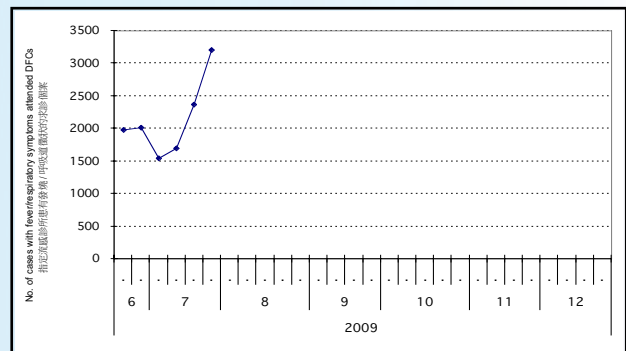
Figure 1: Influenza-like Illness Surveillance Among Sentinel Private Doctors, 2007-09
圖一: 定點私家醫生的流感樣病例監測, 2007-09



In week 30 (Jul 19 to 25), the average consultation rates for ILI among sentinel private doctors were 49.4 (per 1,000 consultations) (Figure 1).

第30週(七月十九日至二十五日), 定點私家醫生呈報的流感樣病例個案平均數為49.4宗(每千名求診個案計)(圖一)。

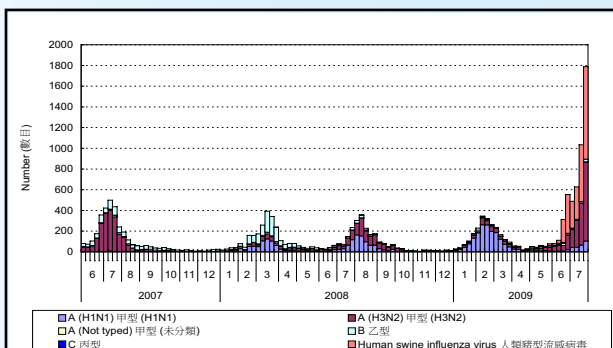
Figure 2: Influenza surveillance at Designated Flu Clinics (DFCs), 2009
圖二: 指定流感診所的流行性感冒監測, 2009



After activation of Designated Flu Clinics (DFCs) by Hospital Authority on Jun 13, 2009, there were 3202 cases with fever/respiratory symptoms attended DFCs from Jul 19 to 25 (week 30) (Figure 2).

自二零零九年六月十三日醫院管理局啟動指定流感診所後, 由七月十九日至二十五日(第30週), 共有3202宗有發燒/呼吸道徵狀的個案到指定流感診所求診(圖二)。

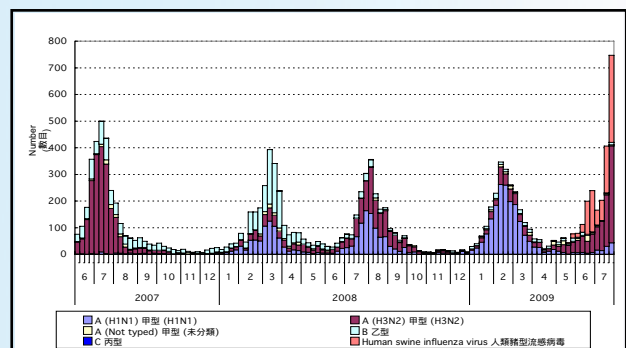
Figure 3: Influenza virus detections (Laboratory Surveillance), 2007-09
圖三: 流行性感冒病毒化驗數目 (實驗室監測), 2007-09



Influenza detection was 1788 in week 30 (Jul 19 to 25). Laboratory surveillance detected 105 influenza A (H1N1) viruses, 892 human swine influenza viruses, 761 influenza A (H3N2) viruses and 26 influenza B viruses (Figure 3).

第30週(七月十九日至二十五日), 實驗室檢測到流行性感冒病毒的樣本數目為1788個。實驗室監測共測定105個甲型流行性感冒(H1N1)病毒樣本、892個人類豬型流感病毒、761個甲型流行性感冒(H3N2)病毒樣本及26個乙型流行性感冒病毒樣本(圖三)。

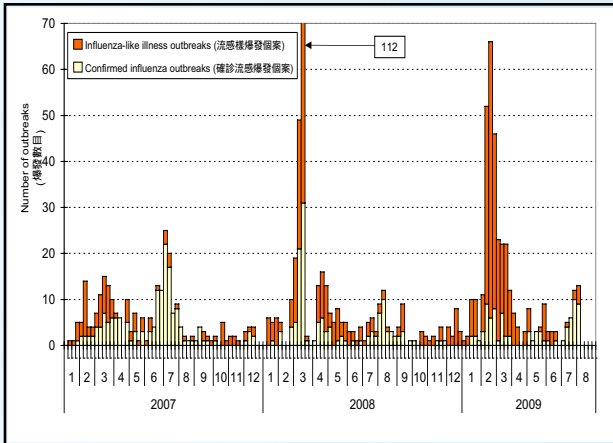
Figure 4: Influenza virus detections (excluded specimens from DFCs), 2007-09
圖四: 流行性感冒病毒化驗數目 (不包括指定流感診所), 2007-09



Influenza detection (excluded specimens from DFCs) was 747 in week 30 (Jul 19 to 25). Laboratory surveillance detected 43 influenza A (H1N1) viruses, 327 human swine influenza viruses, 364 influenza A (H3N2) viruses and 9 influenza B viruses (Figure 4).

第30週(七月十九日至二十五日), 實驗室檢測到流行性感冒病毒(不包括指定流感診所)的樣本數目為747個。實驗室監測共測定43個甲型流行性感冒(H1N1)病毒樣本、327個人類豬型流感病毒、364個甲型流行性感冒(H3N2)病毒樣本及9個乙型流行性感冒病毒樣本(圖四)。

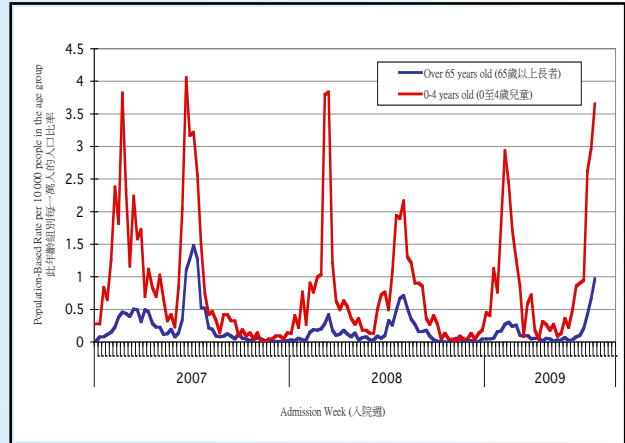
Figure 5: Influenza-like-illness and Confirmed Influenza Outbreak Monitoring, 2007-09
 圖五: 流感樣及確診流感爆發監測, 2007-09



In week 30 (Jul 19 to 25), there were 12 influenza-like illness (ILI) outbreak received and 10 of them were confirmed influenza outbreaks. In the first 5 days of week 31 (as of Jul 30, 2009), there were 13 ILI outbreaks received and 9 of them were confirmed influenza outbreaks (Figure 5).

第30週 (七月十九日至二十五日), 本中心收到12宗流感樣爆發的報告, 有10宗確診為流感爆發。第31週的首5天 (截至七月三十日為止), 收到13宗流感樣爆發的報告, 有9宗確診為流感爆發(圖五)。

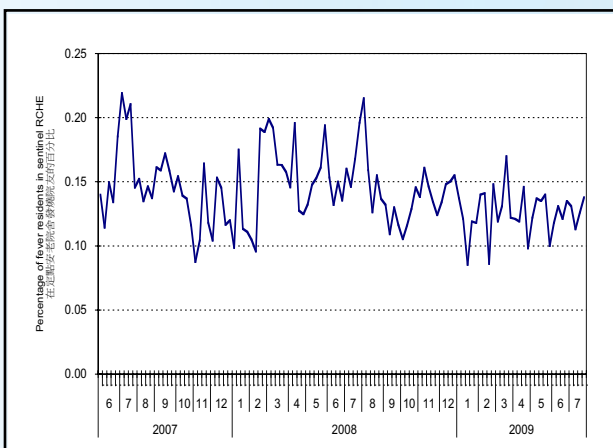
Figure 6: Hospital admission rates with principal diagnosis of influenza*, 2007-09
 圖六: 主要診斷為流感的病人入院率*, 2007-09



In week 30 (Jul 19 to 25), hospital admission rate due to influenza for the elderly 65 years old or above was 0.97 (per 10,000 people in the age group) (blue line in Figure 6) and that for children aged 0 to 4 years was 3.66 (per 10,000 people in the age group) (red line in Figure 6).

第30週 (七月十九日至二十五日), 65歲或以上人士因流感而入院的數字為0.97 (此年齡組別每一萬人的入口) (圖六: 藍色線)。0至4歲小童因流感而入院的數字為3.66 (此年齡組別每一萬人的入口) (圖六: 紅色線)。

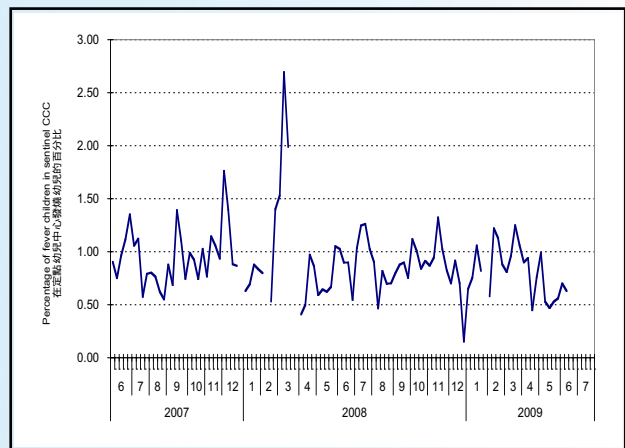
Figure 7: Fever Surveillance at Sentinel Residential Care Homes for the Elderly, 2007-09
 圖七: 定點安老院舍的發燒監測, 2007-09



In week 30 (Jul 19 to 25), 0.14% of residents in the sentinel residential care homes for the elderly had fever (Figure 7).

第30週 (七月十九日至二十五日), 0.14%定點安老院舍的院友出現發燒徵狀(圖七)。

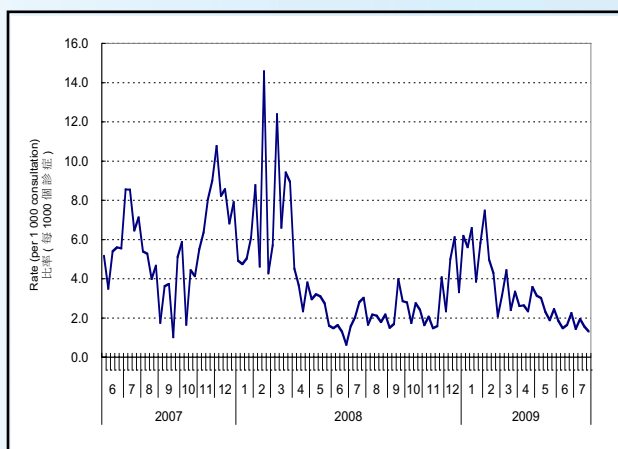
Figure 8: Fever Surveillance at Sentinel Child Care Centres, 2007-09
 圖八: 定點幼兒中心的發燒監測, 2007-09



In week 30 (Jul 19 to 25), fever surveillance at sentinel child care centres was temporarily suspended. (Figure 8).

第30週 (七月十九日至二十五日), 定點幼兒中心的發燒監測暫停(圖八)。

Figure 9: Influenza-like Illness Surveillance Among Sentinel Chinese Medicine Practitioners, 2007-09
圖九: 中醫師的疑似流感監測, 2007-09



In week 30 (Jul 19 to 25), the average consultation rates for ILI among chinese medicine practitioners (Figure 9) were 1.31 per 1,000 consultations.

第30週 (七月十九日至二十五日), 定點中醫師呈報的疑似流感個案平均數為1.31 (每千名求診個案計) (圖九)。

Report under paediatric surveillance programme

兒童監察安排

In week 30 (Jul 19 to 25), no children aged 12 years or below was reported under the paediatric surveillance programme. As of Jul 30 (in the first 5 days of week 31), no new reports was received under the paediatric surveillance programme.

第30週 (七月十九日至二十五日), 兒童監察安排沒有收到新個案。截至七月三十日(第31週的首5天), 沒有收到新個案。

Global Situation (As of Jul 18, 2009)

世界各地的情況(截至七月十八日)

Activity of seasonal influenza decreased in US. Activity of seasonal influenza increased slightly this week in Canada. Activity of seasonal influenza was high in England and pandemic H1N1 influenza detections continued in the Europe.

美國的季節性流感活躍程度下降。加拿大的季節性流感活躍程度較上週輕微上升。英國的季節性流感活躍程度在高水平而流感大流行H1N1的數字在歐洲持續。

Note: The data reported are provisional figures and subject to further revision.

註: 現時報告的是臨時數據, 數字會因更新的資料作出修訂。

Source of data:

CDC FLUVIEW; Public Health Agency of Canada FluWatch and Europe Influenza Surveillance Scheme. Hospital Authority(*); ILI consultations in Sentinel Private Doctors and General Outpatient Clinics; positive influenza detections from Virology Division of Public Health Laboratory Services Branch; notifications of influenza outbreaks received from the Centre for Health Protection; Sentinel Surveillance Systems at Child Care Centres (CCC); Sentinel Surveillance Systems at Residential Care Homes for the Elderly (RCHE).