

# FLU EXPRESS

## 流感速遞

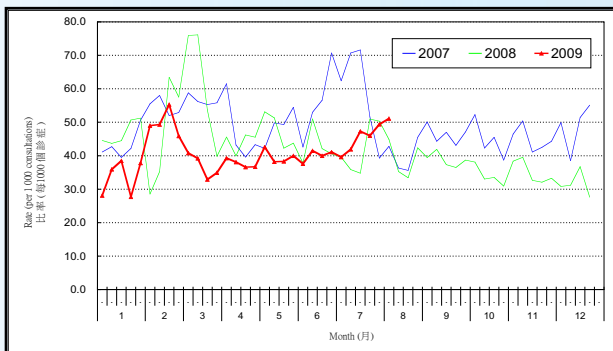


*Flu Express* is a weekly report for the influenza season 2008/09 produced by the Respiratory Disease Office of the Centre for Health Protection. It summarizes and monitors local and global influenza surveillance activities over the influenza season. 流感速遞是由衛生防護中心呼吸疾病辦事處每星期報告有關2008/09流感季節的資訊。流感速遞總結和監察本地及世界各地在流感季節的流行性感冒流行情況。

### Situation in Hong Kong (As of Aug 6, 2009) 香港情況 (截至八月六日)

Laboratory surveillance data showed that the activity of both influenza A (H3N2) virus and human swine influenza remained active in Hong Kong. 實驗室監測數據顯示香港的甲型流行性感冒(H3N2)病毒及人類感染豬型流感仍然活躍。

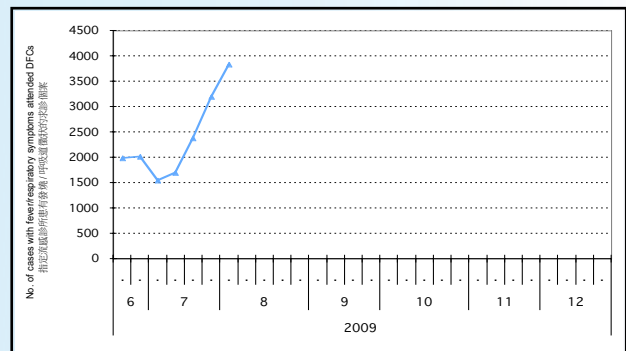
Figure 1: Influenza-like Illness Surveillance Among Sentinel Private Doctors, 2007-09  
圖一: 定點私家醫生的流感樣病例監測, 2007-09



In week 31 (Jul 26 to Aug 1), the average consultation rates for ILI among sentinel private doctors were 51.1 (per 1,000 consultations) (Figure 1).

第31週(七月二十六日至八月一日), 定點私家醫生呈報的流感樣病例個案平均數為51.1宗(每千名求診個案計)(圖一)。

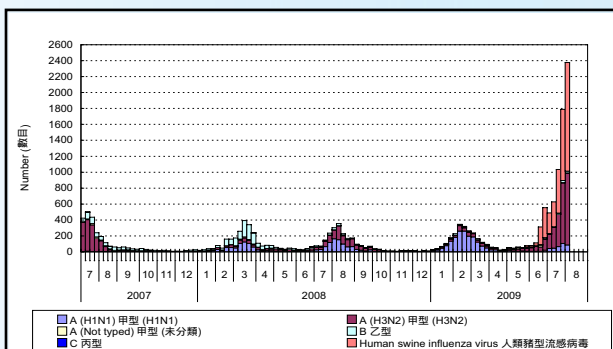
Figure 2: Influenza surveillance at Designated Flu Clinics (DFCs), 2009  
圖二: 指定流感診所的流行性感冒監測, 2009



After activation of Designated Flu Clinics (DFCs) by Hospital Authority on Jun 13, 2009, there were 3828 cases with fever/respiratory symptoms attended DFCs from Jul 26 to Aug 1 (week 31) (Figure 2).

自二零零九年六月十三日醫院管理局啟動指定流感診所後, 由七月二十六日至八月一日(第31週), 共有3828宗有發燒/呼吸徵狀的個案到指定流感診所求診(圖二)。

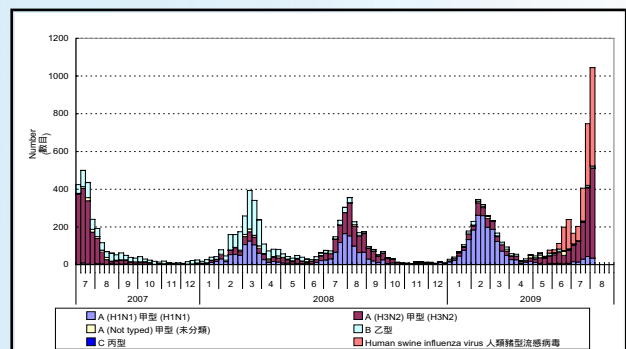
Figure 3: Influenza virus detections (Laboratory Surveillance) \*\*, 2007-09  
圖三: 流行性感冒病毒化驗數目(實驗室監測)\*\*, 2007-09



Influenza detection was 2377 in week 31 (Jul 26 to Aug 1). Laboratory surveillance detected 86 influenza A (H1N1) viruses, 1364 human swine influenza viruses, 904 influenza A (H3N2) viruses and 20 influenza B viruses (Figure 3).

第31週(七月二十六日至八月一日), 實驗室檢測到流行性感冒病毒的樣本數目為2377個。實驗室監測共測定86個甲型流行性感冒(H1N1)病毒樣本、1364個人類豬型流感病毒、904個甲型流行性感冒(H3N2)病毒樣本及20個乙型流行性感冒病毒樣本(圖三)。

Figure 4: Influenza virus detections (excluded specimens from DFCs) \*\*, 2007-09  
圖四: 流行性感冒病毒化驗數目(不包括指定流感診所)\*\*, 2007-09

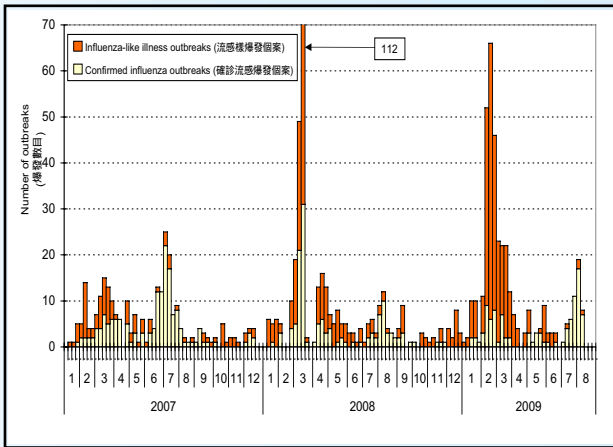


Influenza detection (excluded specimens from DFCs) was 1044 in week 31 (Jul 26 to Aug 1). Laboratory surveillance detected 34 influenza A (H1N1) viruses, 521 human swine influenza viruses, 476 influenza A (H3N2) viruses and 10 influenza B viruses (Figure 4).

第31週(七月二十六日至八月一日), 實驗室檢測到流行性感冒病毒(不包括指定流感診所)的樣本數目為1044個。實驗室監測共測定34個甲型流行性感冒(H1N1)病毒樣本、521個人類豬型流感病毒、476個甲型流行性感冒(H3N2)病毒樣本及10個乙型流行性感冒病毒樣本(圖四)。

\*\* Number of specimens taken in June and July greatly exceeded previous months. 在六月及七月收集到樣本數目較之前的月份大幅增加。

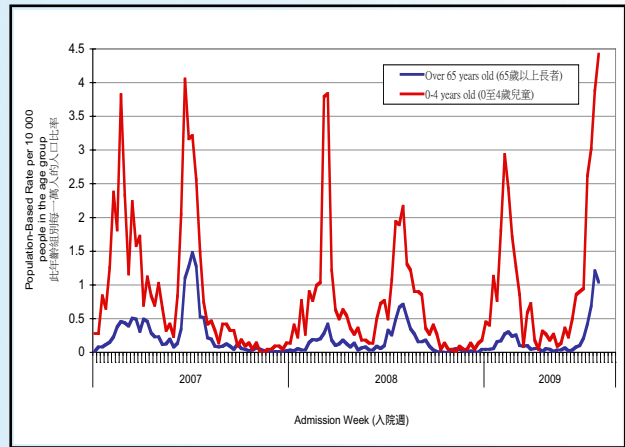
**Figure 5: Influenza-like-illness and Confirmed Influenza Outbreak Monitoring, 2007-09**  
 圖五: 流感樣及確診流感爆發監測, 2007-09



In week 31 (Jul 26 to Aug 1), there were 19 influenza-like illness (ILI) outbreak received and 17 of them were confirmed influenza outbreaks. In the first 5 days of week 32 (as of Aug 6, 2009), there were 8 ILI outbreaks received and 7 of them were confirmed influenza outbreaks (Figure 5).

第31週 (七月二十六日至八月一日), 本中心收到19宗流感樣爆發的報告, 有17宗確診為流感爆發。第32週的首5天 (截至八月六日為止), 收到8宗流感樣爆發的報告, 有7宗確診為流感爆發(圖五)。

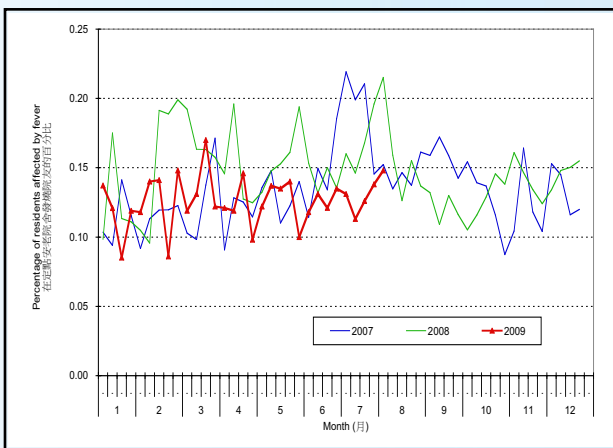
**Figure 6: Hospital admission rates with principal diagnosis of influenza\*, 2007-09**  
 圖六: 主要診斷為流感的病人入院率\*, 2007-09



In week 31 (Jul 26 to Aug 1), hospital admission rate due to influenza for the elderly 65 years old or above was 1.04 (per 10,000 people in the age group) (blue line in Figure 6) and that for children aged 0 to 4 years was 4.42 (per 10,000 people in the age group) (red line in Figure 6).

第31週 (七月二十六日至八月一日), 65歲或以上人士因流感而入院的數字為1.04 (此年齡組別每一萬人的入口) (圖六: 藍色線)。0至4歲小童因流感而入院的數字為4.42 (此年齡組別每一萬人的入口) (圖六: 紅色線)。

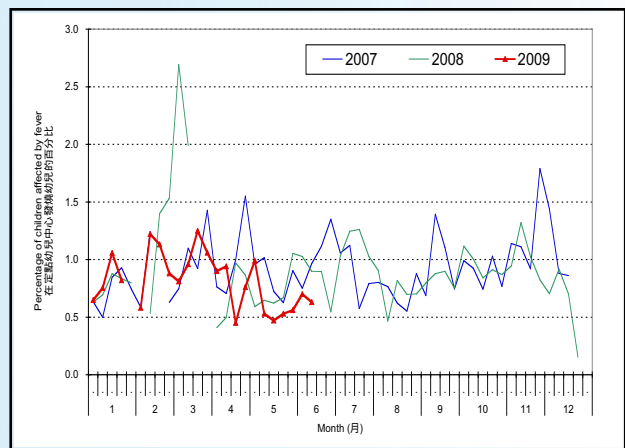
**Figure 7: Fever Surveillance at Sentinel Residential Care Homes for the Elderly, 2007-09**  
 圖七: 定點安老院舍的發燒監測, 2007-09



In week 31 (Jul 26 to Aug 1), 0.15% of residents in the sentinel residential care homes for the elderly had fever (Figure 7).

第31週 (七月二十六日至八月一日), 0.15%定點安老院舍的院友出現發燒徵狀(圖七)。

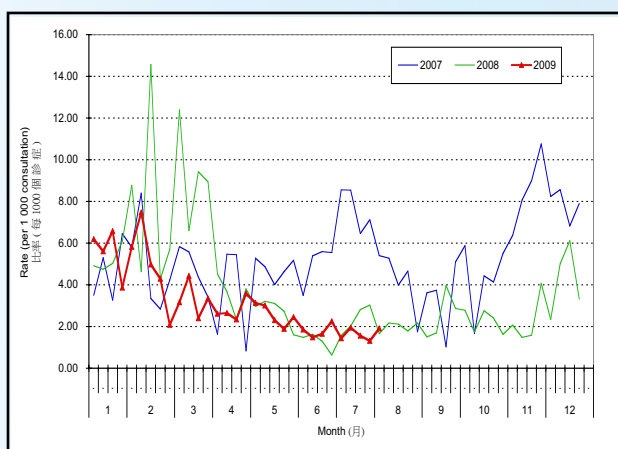
**Figure 8: Fever Surveillance at Sentinel Child Care Centres, 2007-09**  
 圖八: 定點幼兒中心的發燒監測, 2007-09



In week 31 (Jul 26 to Aug 1), fever surveillance at sentinel child care centres was temporarily suspended. (Figure 8).

第31週 (七月二十六日至八月一日), 定點幼兒中心的發燒監測暫停(圖八)。

Figure 9: Influenza-like Illness Surveillance Among Sentinel Chinese Medicine Practitioners, 2007-09  
圖九: 中醫師的疑似流感監測, 2007-09



In week 31 (Jul 26 to Aug 1), the average consultation rates for ILI among Chinese medicine practitioners (Figure 9) were 1.91 per 1,000 consultations.

第31週 (七月二十六日至八月一日), 定點中醫師呈報的疑似流感個案平均數為1.91 (每千名求診個案計) (圖九)。

## Report under paediatric surveillance programme

### 兒童監察安排

In week 31 (Jul 26 to Aug 1), no children aged 12 years or below was reported under the paediatric surveillance programme. As of Aug 6 (in the first 5 days of week 32), a new report involving a one-year-old girl was received on Aug 5. The nasopharyngeal aspirate specimen taken from her was tested positive to Influenza A.

第31週 (七月二十六日至八月一日), 兒童監察安排沒有收到新個案。截至八月六日(第32週的首5天), 兒童監察安排於八月五日收到一宗新報告, 涉及一名一歲女童。女童的咽喉分泌物樣本化驗結果顯示對甲型流感呈陽性反應。

## Global Situation (As of Jul 25, 2009)

### 世界各地的情況(截至七月二十五日)

Activity of seasonal influenza decreased in US. Activity of seasonal influenza decreased slightly this week in Canada. Activity of seasonal influenza above the baseline in Ireland, Norway, Malta and the United Kingdom.

美國的季節性流感活躍程度下降。加拿大的季節性流感活躍程度較上週輕微下降。愛爾蘭、挪威、馬爾他及英國的季節性流感活躍程度高於基線水平。

Note: The data reported are provisional figures and subject to further revision.

註: 現時報告的是臨時數據, 數字會因更新的資料作出修訂。

#### Source of data:

CDC FLUVIEW; Public Health Agency of Canada FluWatch and Europe Influenza Surveillance Scheme. Hospital Authority(\*); ILI consultations in Sentinel Private Doctors and General Outpatient Clinics; positive influenza detections from Virology Division of Public Health Laboratory Services Branch; notifications of influenza outbreaks received from the Centre for Health Protection; Sentinel Surveillance Systems at Child Care Centres (CCC); Sentinel Surveillance Systems at Residential Care Homes for the Elderly (RCHE).