

# Flu Express

## 流感速遞



*Flu Express* is a weekly report produced by the Respiratory Disease Office of the Centre for Health Protection. It monitors and summaries the latest local and global influenza activities.

流感速遞是由衛生防護中心呼吸疾病辦事處每星期出版有關監測本地及世界各地的流行性感冒流行情況的總結報告。

Human Swine Influenza had been removed from the list of statutorily notifiable infectious diseases under the Prevention and Control of Disease Ordinance (Cap. 599) since October 8, 2010. This report summarized the influenza surveillance data for week 45 (October 31 to November 6, 2010).

由 2010 年 10 月 8 日起，人類豬型流感已從《預防及控制疾病條例》(第 599 章)的法定須呈報傳染病名單中剔除。本報告總結了第 45 週(2010 年 10 月 31 日至 11 月 6 日)的流感監測數據。

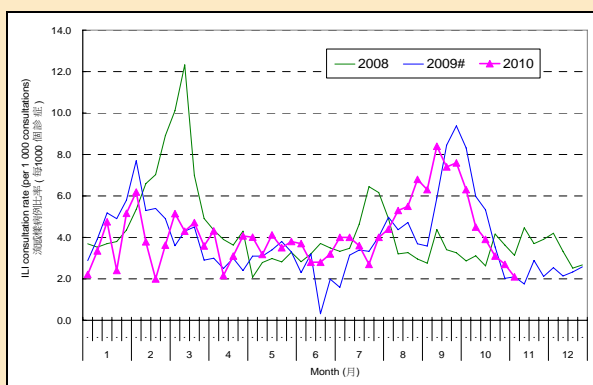
### Local Situation of Influenza Activity (as of November 10, 2010)

#### 本地流感流行情況 (截至2010年11月10日)

- The latest surveillance data showed that the overall influenza activity has continued to decrease to the baseline level.  
最新的監測數據顯示整體流感活躍程度已進一步下降至基線水平。

Figure 1: Influenza-like illness surveillance among sentinel general outpatient clinics<sup>#</sup>, 2008-10

圖一：定點普通科診所的流感樣病例監測，2008-10

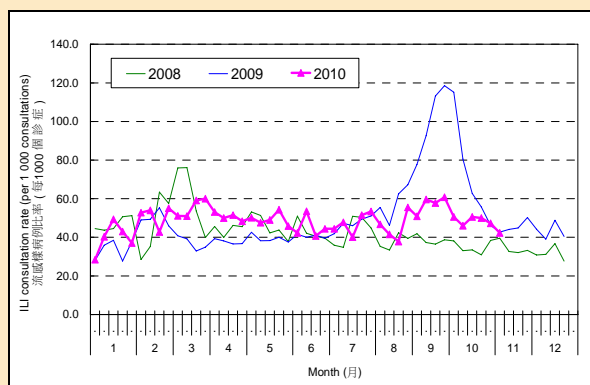


In week 45, the average consultation rate for influenza-like illness (ILI) among sentinel general outpatient clinics (GOPCs) was 2.1 ILI cases per 1,000 consultations (Figure 1).

在第 45 週，定點普通科診所呈報的流感樣病例個案平均數為 2.1 宗 (每千個診症計) (圖一)。

Figure 2: Influenza-like illness surveillance among sentinel private doctors, 2008-10

圖二：定點私家醫生的流感樣病例監測，2008-10



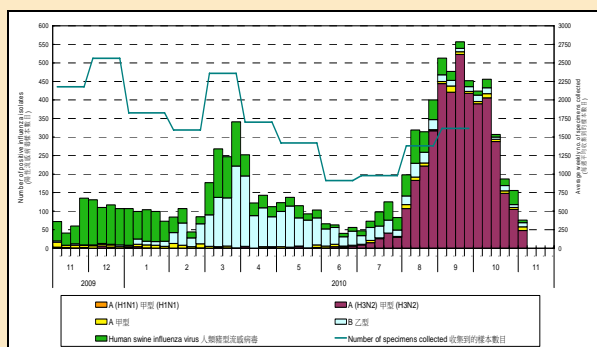
In week 45, the average consultation rate for ILI among sentinel private doctors was 42.3 ILI cases per 1,000 consultations (Figure 2).

在第 45 週，定點私家醫生呈報的流感樣病例個案平均數為 42.3 宗 (每千個診症計) (圖二)。

<sup>#</sup> During the operation of the 8 Designated Flu Clinics (DFCs) from week 25 of 2009 to week 21 of 2010, statistics from the eight DFCs were not included in the ILI surveillance among sentinel GOPCs.

在八間指定流感診所運作期間(由 2009 年的第 25 週至 2010 年的第 21 週)，定點普通科診所的流感樣病例監測沒有包括八間指定流感診所的統計數字。

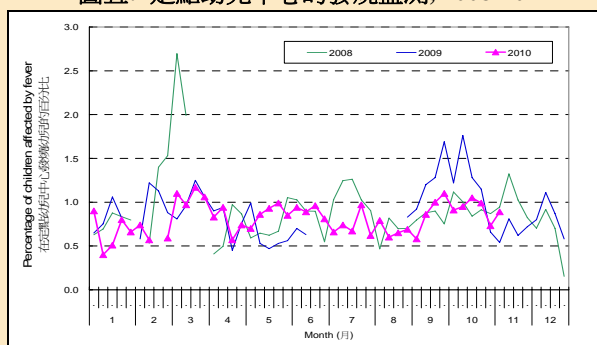
**Figure 3: Influenza virus detections (Laboratory surveillance), 2009-10**  
**圖三: 流行性感冒病毒化驗數目 (實驗室監測), 2009-10**



The number of influenza viruses detected in the Public Health Laboratory Centre in week 45 was 76, including 48 influenza A (H3) viruses, 11 influenza B viruses, 10 influenza A viruses and 7 human swine influenza viruses (Figure 3).

在第 45 週, 公共衛生檢測中心共檢測到 76 個流行性感冒病毒的樣本, 當中包括 48 個甲型(H3)流感病毒樣本、11 個乙型流行性感冒病毒樣本、10 個甲型流感病毒樣本及 7 個人類豬型流感病毒樣本 (圖三)。

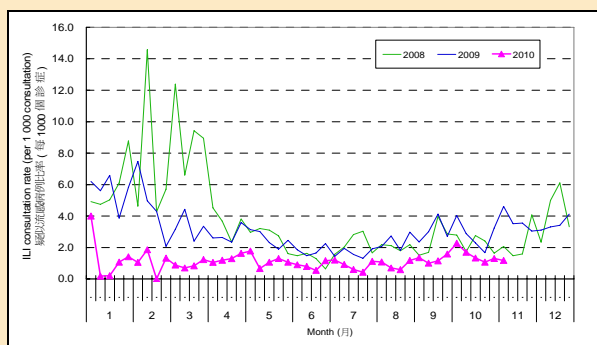
**Figure 5: Fever surveillance at sentinel child care centres, 2008-10**  
**圖五: 定點幼兒中心的發燒監測, 2008-10**



In week 45, 0.89% of children in the sentinel child care centres had fever (Figure 5).

在第 45 週, 0.89% 定點幼兒中心的幼兒出現發燒徵狀 (圖五)。

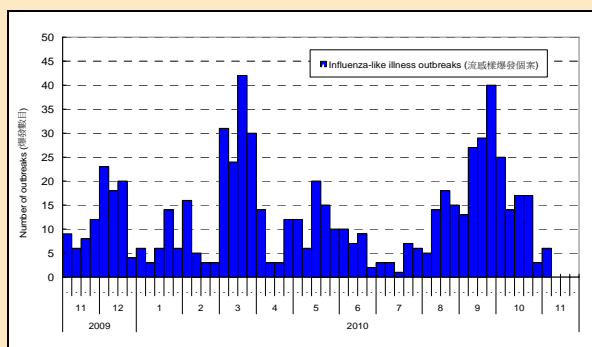
**Figure 7: Influenza-like illness surveillance among sentinel Chinese medicine practitioners, 2008-10**  
**圖七: 中醫師的疑似流感監測, 2008-10**



In week 45, the average consultation rates for ILI among Chinese Medicine Practitioners were 1.17 ILI cases per 1,000 consultations (Figure 7).

在第 45 週, 定點中醫師呈報的疑似流感個案平均數為 1.17 宗 (每千個診症計) (圖七)。

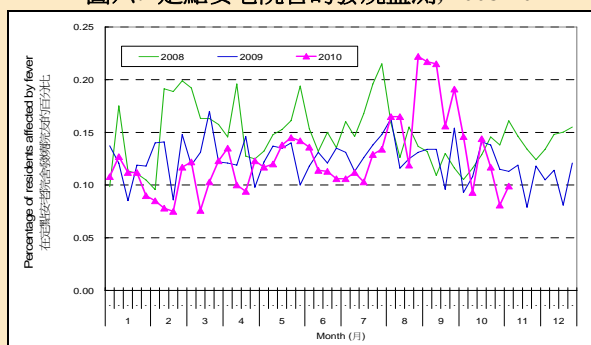
**Figure 4: Influenza-like illness outbreak monitoring, 2009-10**  
**圖四: 流感樣爆發監測, 2009-10**



In week 45, 6 ILI outbreaks occurring in schools/ institutions were recorded (Figure 4). In the first 4 days of week 46 (November 7 to 10, 2010), 2 ILI outbreaks occurring in schools/ institutions were recorded.

在第 45 週, 本中心錄得 6 宗在學校/院舍發生的流感樣爆發的報告 (圖四)。第 46 週的首 4 天 (2010 年 11 月 7 日至 10 日) 有 2 宗在學校/院舍發生的流感樣爆發的報告。

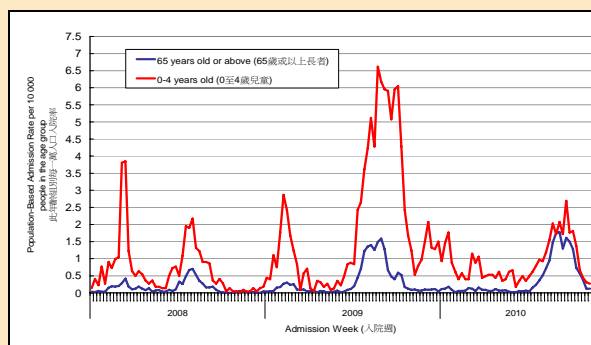
**Figure 6: Fever surveillance at sentinel residential care homes for the elderly, 2008-10**  
**圖六: 定點安老院舍的發燒監測, 2008-10**



In week 45, 0.10% of residents in the sentinel residential care homes for the elderly had fever (Figure 6).

在第 45 週, 0.10% 定點安老院舍的院友出現發燒徵狀 (圖六)。

**Figure 8: Hospital admission rates with principal diagnosis of influenza, 2008-10**  
**圖八: 主要診斷為流感的病人入院率, 2008-10**



In week 45, hospital admission rate due to influenza for children aged 0 - 4 years and elderly aged 65 years or above was 0.26 and 0.12 cases respectively (per 10,000 people in the age group) (Figure 8).

在第 45 週, 0 - 4 歲小童及 65 歲或以上人士因流感而入院的比率分別為 0.26 和 0.12 宗 (該年齡組別每一萬人口) (圖八)。

## Surveillance of severe paediatric influenza-associated complication/death

### 兒童流感相關之嚴重併發症／死亡個案的監測

- In week 45 and the first 4 days of week 46 (November 7 to 10, 2010), there was no new report of severe paediatric influenza-associated complication/death.  
第45週及第46週的首4天 (2010年11月7日至10日) 均沒有新的兒童流感相關之嚴重併發症／死亡個案的報告。

Note: The data reported are provisional figures and subject to further revision.  
註：現時報告的是臨時數據，可能會因資料的更新而作出修訂。

## Global Situation of Influenza Activity

### 世界各地的流感流行情況

#### Northern hemisphere

##### 北半球

- In the United States and Canada (week ending October 30, 2010), influenza activity remained low.  
美國及加拿大的流感活躍程度保持在低水平 (截至2010年10月30日的一週)。
- In Singapore (week ending November 6, 2010), the influenza activity was low and remained below the warning level.  
新加坡的流感活躍程度處於低水平及保持在警戒水平以下(截至2010年11月6日的一週)。
- In Europe (week ending October 31, 2010), influenza activity was low.  
歐洲的流感活躍程度處於低水平 (截至2010年10月31日的一週)。

#### Southern hemisphere

##### 南半球

- In Australia (week ending October 29, 2010), levels of ILI in the community continued to decrease through all surveillance systems.  
澳洲的流感樣病例水平在所有監測系統都持續下降(截至2010年10月29日的一週)。

#### Sources (資料來源):

United States (美國): <http://www.cdc.gov/flu/weekly/>

Canada (加拿大): <http://www.phac-aspc.gc.ca/fluwatch/index-eng.php>

Singapore (新加坡): <http://www.moh.gov.sg/mohcorp/statisticsweeklybulletins.aspx>

Europe (歐洲): <http://www.euroflu.org/index.php>

Australia (澳洲): <http://www.healthemergency.gov.au/internet/healthemergency/publishing.nsf/Content/ozflucurrent.htm>