

## Daily Update of Influenza Situation

**March 11, 2008**

(Day 3 of Week 11)

### **Highlights**

1. Since our last Update, there are 27 more influenza-like illness outbreaks affecting 1 hospital, 1 residential home for the disabled, 4 secondary school, 15 primary schools and 6 kindergartens/ childcare centres (Table 1 and Figure 1). This number is higher than that of the previous day, and coincided with the news that a 7-year-old boy had died in TMH.
2. The figures concerning the number of influenza isolates and sentinel surveillance for influenza-like-illnesses are shown in Figures 2-4.
3. Hospital admission rates due to influenza among children under 5 and elderly 65-year-old or older are rising, but below those recorded in peak seasons in 2006 and 2007. Number of attendances at the hospital accident and emergency departments is on the high side. (Figures 5-7).
4. Hong Kong is currently at the height of influenza season, which is expected to last for some period.
5. Health advice for the public in the prevention of influenza:
  - consult their doctors for medical advice promptly if they develop symptoms of respiratory tract infection;
  - maintain good personal and environmental hygiene;
  - wash hands after sneezing or coughing and wear a mask when developing symptoms of respiratory infections;
  - maintain good ventilation;
  - build up good body immunity by having a proper diet, regular exercise and adequate rest, reducing stress and avoiding smoking;and

---

*This update is prepared to provide key highlights of the daily flu situation by the Centre for Health Protection with inputs from the Hospital Authority. For more information about influenza, please visit CHP Flu Page.*

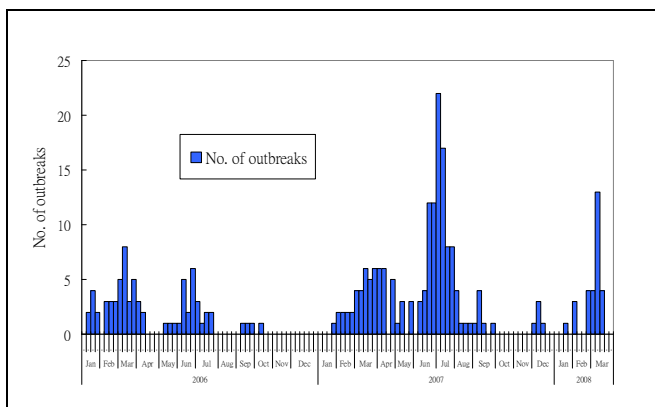
- avoid visiting crowded places with poor ventilation, especially during influenza season.
6. Health advice for institutions include schools and institutions:
- children with fever and respiratory symptoms are strongly advised not to attend school;
  - staff with respiratory illnesses should refrain from work;
  - parents are advised to record the body temperature of their children and hand in the temperature record sheet to the school everyday during the influenza season;
  - residents with fever and respiratory symptoms in institutions should be isolated, and staff with symptoms should refrain from work;
  - persons with respiratory symptoms should wear a mask and consult a doctor promptly;
  - maintain good personal hygiene and wash hands after sneezing and coughing;
  - maintain good ventilation;
  - build up good body immunity by having a proper diet, regular exercise and adequate rest, reducing stress and avoiding smoking;
  - avoid visiting crowded places with poor ventilation, especially during influenza season;
  - Increase in respiratory illnesses or absenteeism in schools should be reported to our Central Notification Office (Tel: 2477-2772; Fax: 2477-2770) for epidemiological investigation and outbreak control.

**Table 1 Newly reported institutional influenza-like illness outbreaks (as of 11 March 2pm)**

Outbreak Status (Number of outbreaks)	Name of institutions
Confirmed (4)	Buddhist Wong Wai Tin College
	Hong Kong Society for the Protection of Children SIA Whampoa Nursery School
	TWGHs Kwan Fong Nursery School
	Tuen Mun Hospital Ward B7
Suspected (23)	SKH Ling Oi Primary School
	STFA Ho Yat Tung Primary School (AM)
	Tuen Mun Government Primary School
	Po Leung Kuk Fong Wong Kam Chuen Primary School
	GT (Ellen Yeung) College
	Valtorta College
	Alliance Primary School Sheung Shui
	Fung Kai Liu Man Shek Tong Secondary School
	The Fanling Assemblies of God Kindergarten
	LKWFSL Wong Yiu Nam Primary School
	Immaculate Heart of Mary Kindergarten
	Wong Tai Sin Catholic Primary School
	St. Patrick's School

	St. Rose of Lima's School
	La Salle Primary School
	G. T. (Ellen Yeung) College
	Evangelical Lutheran Church – Hong Kong, Ling On Nursery School
	Pooi To Primary School Kindergarten Section
	Ho Lap Primary School (SPSD by Sik Sik Yuen)
	Ma Tau Chung Government Primary School
	St. Joseph's College
	Li Sing Tai Hang School
	TWGHs Tai Tung Pui Care and Attention Home

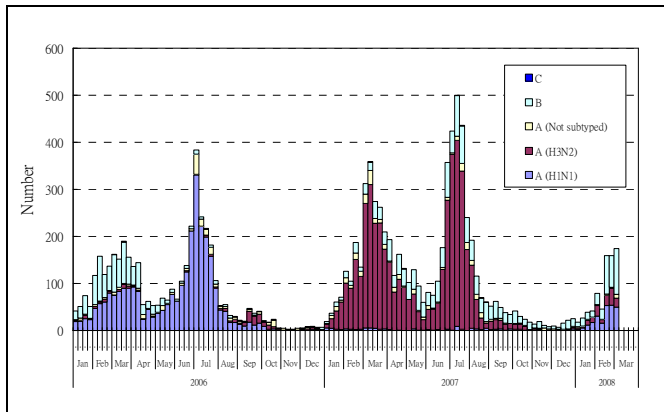
**Figure 1 Influenza outbreaks in institutions (including residential care homes for the elderly, schools, child care centre and etc) since 2006**



There are 27 suspected outbreaks today. 4 of them are confirmed influenza outbreaks. So far, 13 outbreaks were confirmed last week.

In 2006 and 07, the highest numbers of confirmed outbreaks reported per week were 8 and 22 and were recorded in weeks 10 and 27.

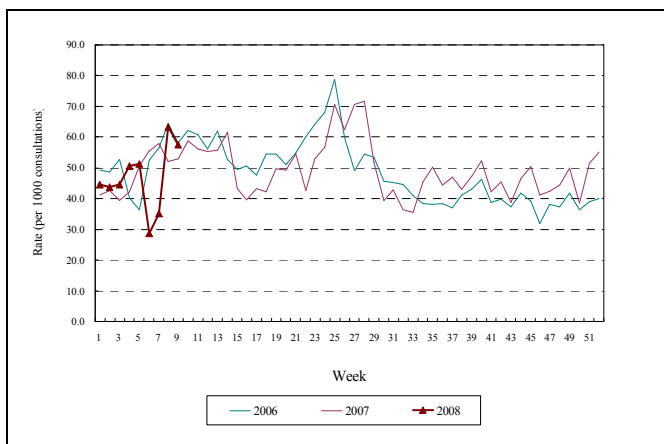
**Figure 2 Influenza virus detections since 2006**



There were 174 influenza detections last week.

In 2006 and 07, the highest numbers of influenza detection were 384 and 500 and were recorded in weeks 26 and 28.

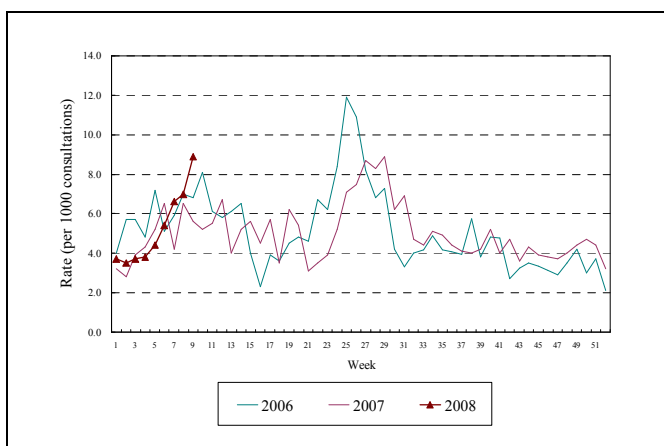
**Figure 3 Influenza-like Illness Surveillance Among Sentinel Private doctors since 2006**



There were 57.5 ILI per 1,000 consultations among sentinel private doctors last week.

In 2006 and 07, the highest numbers of ILI consultations among sentinel private doctors were 78.9 and 71.6 per 1,000 consultations and were recorded in weeks 25 and 28.

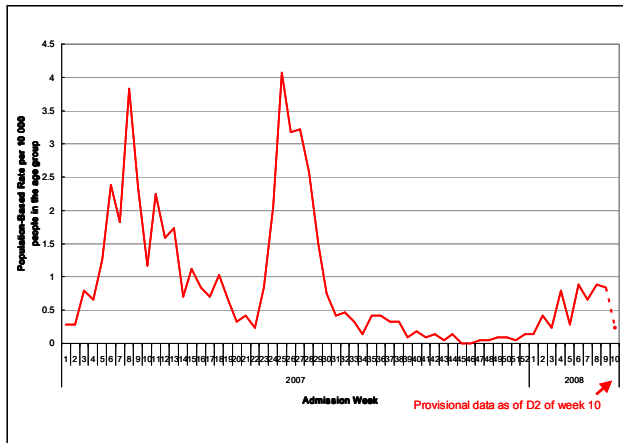
**Figure 4 Influenza-like Illness Surveillance Among General Outpatient Clinics since 2006**



There were 8.9 ILI per 1,000 consultations in general outpatient clinics last week.

In 2006 and 07, the highest numbers of ILI consultations in general outpatient clinics were 11.9 and 8.9 per 1,000 consultations and were recorded in weeks 25 and 29.

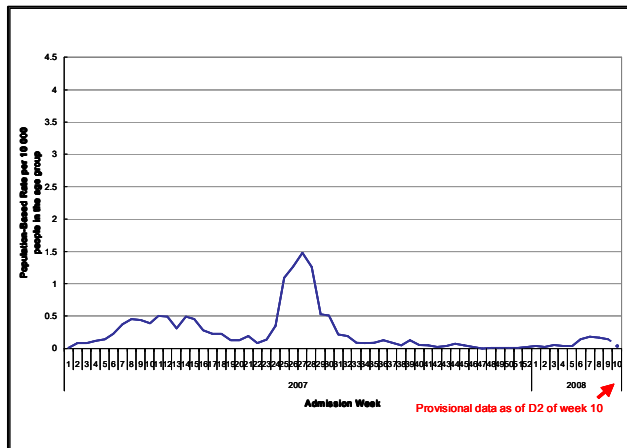
**Figure 5 Hospital admission rates for influenza in children below 5-year-old**



The admission rate for influenza in children below 5 years old is 0.23 per 10,000 population so far this week.

In 2006 and 07, the highest admission rate for this group were 3.00 and 4.07 per 10,000 population and were recorded in weeks 25 and 25.

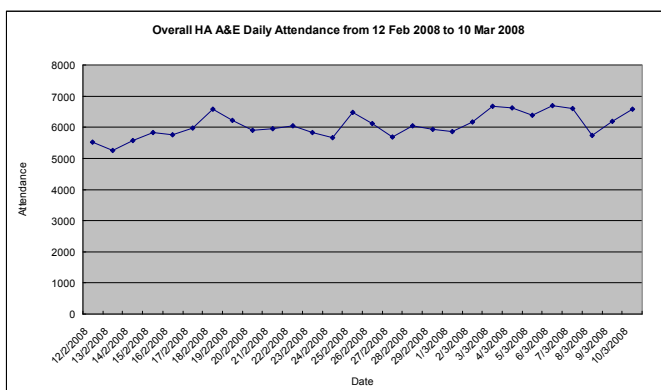
**Figure 6 Hospital admission rates for influenza in elderly older than 65 years of age**



The admission rate for influenza in the elderly over 65 years old is 0.03 per 10,000 population so far this week.

In 2006 and 07, the highest admission rate for this group were 0.32 and 1.48 per 10,000 population and were recorded in weeks 26 and 27.

**Figure 7 Attendances at Hospital Authority Accident and Emergency Departments**



There were 6,593 AED attendances yesterday.

In 2006 and 2007, the highest number of daily AED attendance were 6,421 and 6,412 and were recorded in weeks 26 and 50.