

**April 3, 2009**  
二零零九年四月三日

**2008/2009 FLU SEASON**  
2008/2009 流感季節

***INFLUENZA DAILY SITUATION UPDATE***  
**流行性感冒每日概況**



*Influenza daily situation update is a daily report for the influenza season 2008/09 produced by the Centre for Health Protection. It summarized the latest influenza situation in Hong Kong.*

*流行性感冒每日概況是在 2008/2009 流感季節時由衛生防護中心每日報告香港流行性感冒的最新情況。*

Since influenza activity has returned to baseline level, “Influenza Daily Situation Update” will be published until 3 April 2009. Starting next week, the weekly “Flu Express” will be published every Friday to report local and global influenza surveillance activities.

由於流感活躍程度已回落至基線水平，『流行性感冒每日概況』將出版至四月三日。而從下星期起，每週『流感速遞』將逢星期五繼續刊載本地及世界各地流感的最新情況。

**List of newly reported Influenza-like illness (ILI) and Confirmed Influenza Institutional Outbreaks (From April 2 12:00 to April 3 12:00)**

最新報告的流感樣及確診流感院舍爆發(由4月2日中午十二時至4月3日中午十二時)

Number of ILI outbreaks 流感樣爆發 個案數目	District 地區	Name of institutions (Number of persons affected as of reporting) 院舍名稱 (呈報時受影響人數)
2	Central and Western 中西區	Kau Yan School (3) 救恩學校 (3)
	Kowloon City 九龍城	St Rose of Lima's Kindergarten (3) 聖羅撒幼稚園 (3)

## Background information

### 背景資料

- Influenza-like illness (ILI) and ILI outbreaks can be caused by different respiratory viruses and not just influenza. (除流感病毒外，其他呼吸道病毒亦會引起流感樣疾病及流感樣爆發。)
- According to historical data (2005-07), during peak influenza seasons, between 10 and 32 ILI outbreaks were reported to CHP every week. During the peak influenza flu season in 2008, the highest record was 112 ILI outbreaks in a week. (在二〇〇五至二〇〇七年期間的歷史數據顯示，流感季節內每週最高約有 10 至 32 宗院舍爆發流感樣病例的呈報。在二〇〇八年，最高的每週爆發數字為 112 宗。)
- According to data from the Hospital Authority (HA) (2004-07), approximately 60-120 children aged 12 or below were admitted to HA hospitals every year having discharge diagnosis of influenza with complications (i.e., pneumonia, sepsis, myocarditis, encephalopathy or shock). Up to 36 such children per month may be admitted during the peak influenza season. (根據二〇〇四至二〇〇七年醫院管理局的數字顯示，每年約 60 至 120 名十二歲以下的兒童因流感引起的併發症(如嚴重肺炎、敗血症、心肌炎、腦病及休克)而須要入院。在流感季節高峰期，每月最多有 36 名的兒童因流感引起的併發症而入院。)
- According to death certificates (2004-07), between 18 and 26 children under age 10 die of primarily infective conditions every year in Hong Kong. These deaths may or may not be due to influenza. During the peak influenza season, there was a baseline range of 0 - 4 such cases per month. (根據二〇〇四至二〇〇七年死亡證統計資料顯示，本港每年約有 18 至 26 名十歲以下的兒童主因為感染而死亡的個案。這些個案可以因流感或其他原因引致。在流感季節高峰期，每月的基線範圍是 0 至 4 宗。)

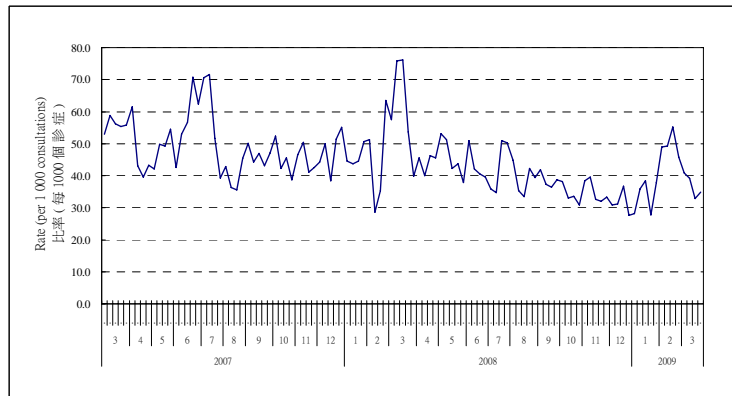
## Situation in Hong Kong (As of Apr 2, 2009) (To be updated on every Friday)

香港情況 (截至四月二日) (逢星期五更新)

The influenza activity has returned to baseline level in Hong Kong.  
香港的流行性感冒活躍程度已回落至基線水平。

*Figure 1: Influenza-like Illness Surveillance Among Sentinel Private Doctors, 2007-09*

圖一：定點私家醫生的流感樣病例監測, 2007-09

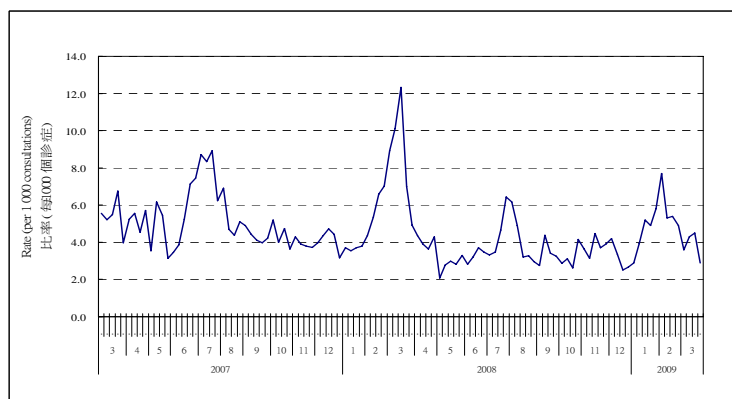


In week 13 (Mar 22 to 28), the average consultation rates for ILI among sentinel private doctors were 34.9 (per 1,000 consultations) (Figure 1).

第 13 週 (三月二十二日至二十八日)，定點私家醫生呈報的流感樣病例個案平均數為 34.9 宗(每千名求診個案計) (圖一)。

*Figure 2: Influenza-like Illness Surveillance Among Sentinel General Outpatient Clinics, 2007-09*

圖二：定點普通科診所的流感樣病例監測, 2007-09

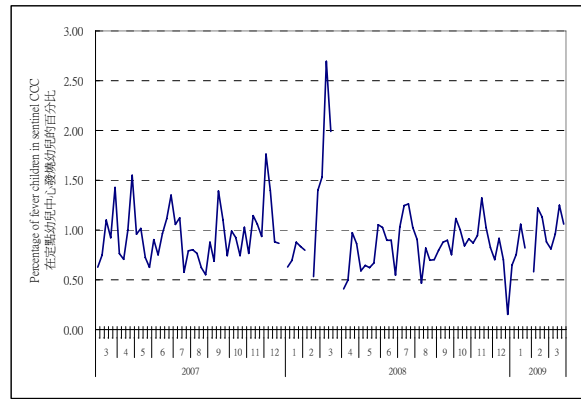


In week 13 (Mar 22 to 28), the average consultation rates for ILI among sentinel general outpatient clinics were 2.9 (per 1,000 consultations) (Figure 2).

第 13 週 (三月二十二日至二十八日)，定點普通科診所呈報的流感樣病例個案平均數為 2.9 宗(每千名求診個案計) (圖二)。

*Figure 3: Fever Surveillance at Sentinel Child Care Centres, 2007-09*

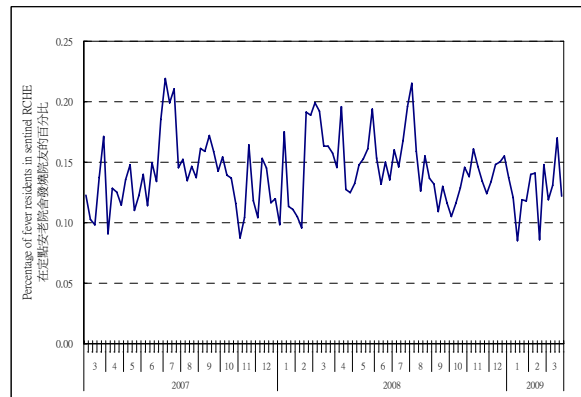
*圖三：定點幼兒中心的發燒監測, 2007-09*



In week 13 (Mar 22 to 28), 1.06% of children in the sentinel child care centres had fever (Figure 3).  
第 13 週 (三月二十二日至二十八日), 1.06% 定點幼兒中心的幼兒出現發燒徵狀(圖三)。

*Figure 4: Fever Surveillance at Sentinel Residential Care Homes for the Elderly, 2007-09*

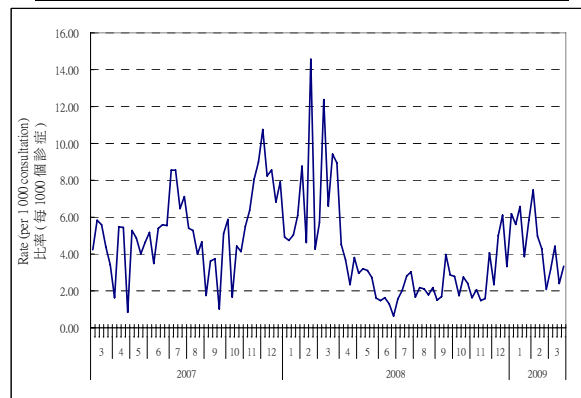
*圖四：定點安老院舍的發燒監測, 2007-09*



In week 13 (Mar 22 to 28), 0.12% of residents in the sentinel residential care homes for the elderly had fever (Figure 4).  
第 13 週 (三月二十二日至二十八日), 0.12% 定點安老院舍的院友出現發燒徵狀(圖四)。

*Figure 5: Influenza-like Illness Surveillance Among Sentinel Chinese Medicine Practitioners, 2007-09*

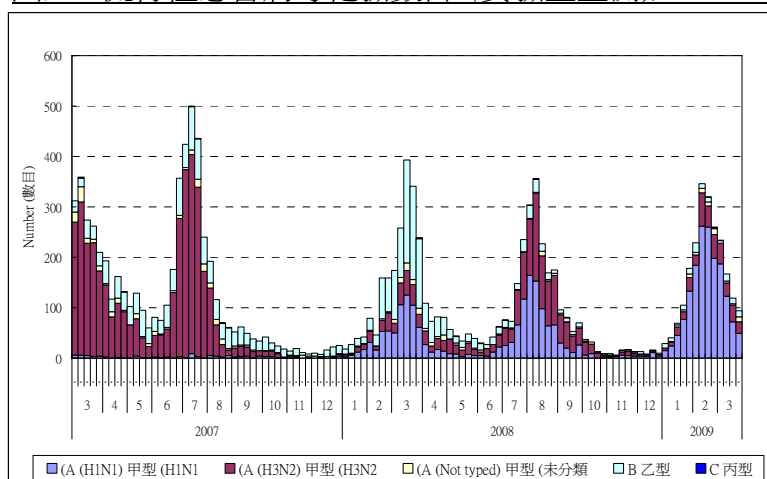
*圖五：中醫師的疑似流感監測, 2007-09*



In week 13 (Mar 22 to 28), the average consultation rates for ILI among chinese medicine practitioners (Figure 5) were 3.34 per 1,000 consultations.  
第 13 週 (三月二十二日至二十八日), 定點中醫師呈報的疑似流感個案平均數為 3.34 (每千名求診個案計)(圖五)。

**Figure 6: Influenza virus detections (Laboratory Surveillance), 2007-09**

**圖六：流行性感冒病毒化驗數目 (實驗室監測), 2007-09**

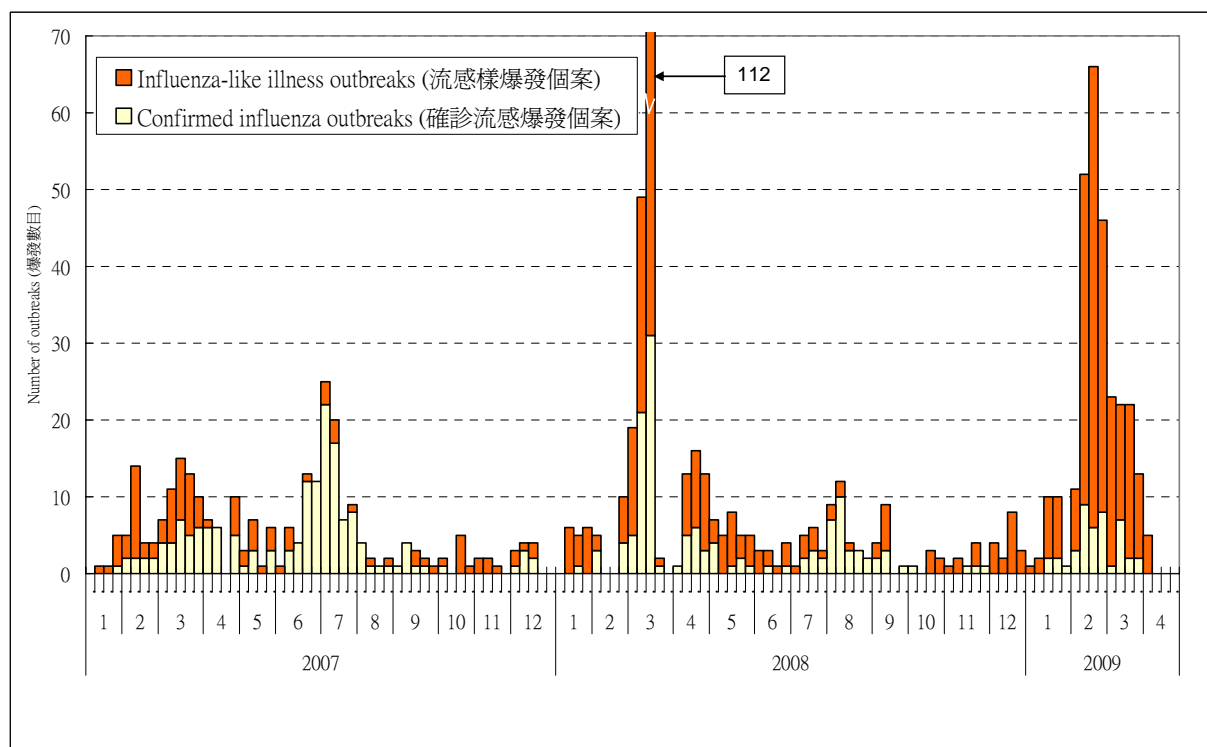


Influenza detection was 94 in week 13 (Mar 22 to 28). Laboratory surveillance detected 49 influenza A (H1N1) viruses, 23 influenza A (H3N2) viruses and 12 influenza B viruses (Figure 6).

第 13 週 (三月二十二日至二十八日)，實驗室檢測到流行性感冒病毒的樣本數目為 94 個。實驗室監測共測定 49 個甲型流行性感冒(H1N1)病毒樣本、23 個甲型流行性感冒(H3N2)病毒樣本及 12 個乙型流行性感冒病毒樣本 (圖六)。

**Figure 7: Influenza-like-illness and Confirmed Influenza Outbreak Monitoring, 2007-09**

**圖七：流感樣及確診流感爆發監測, 2007-09**

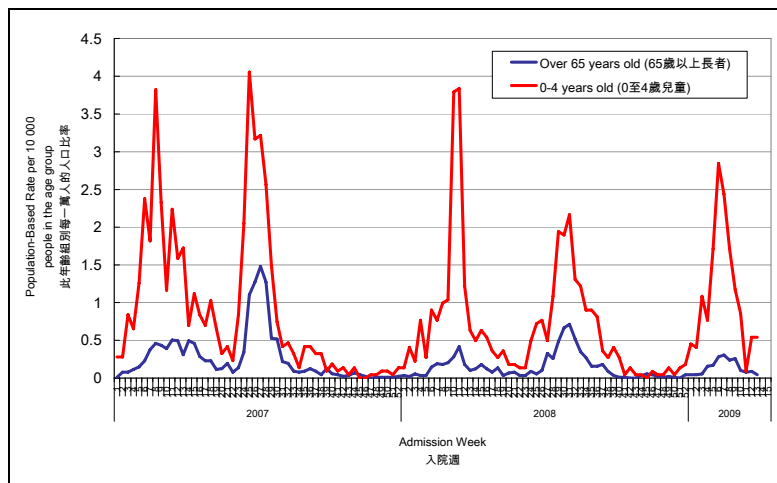


In week 13 (Mar 22 to 28), there were 13 influenza-like illness (ILI) outbreaks received and 2 of them were confirmed influenza outbreaks. In the first 5 days of week 14 (as of Apr 2, 2009), there were 5 ILI outbreaks received and none of them were confirmed influenza outbreaks (Figure 7).

第 13 週 (三月二十二日至二十八日)，本中心收到 13 宗流感樣爆發的報告，其中 2 宗為確診的流感爆發。第 14 週的首 5 天 (截至四月二日為止)，收到有 5 宗流感樣爆發的報告，沒有確診流感爆發 (圖七)。

*Figure 8: Hospital admission rates with principal diagnosis of influenza, 2007-09*

*圖八：主要診斷為流感的病人入院率, 2007-09*



In week 13 (Mar 22 to 28), hospital admission rate due to influenza for the elderly 65 years old or above was 0.05 (per 10,000 people in the age group) (blue line in Figure 8) and that for children aged 0 to 4 years was 0.54 (per 10,000 people in the age group) (red line in Figure 8).

第13週(三月二十二日至二十八日), 65歲或以上人士因流感而入院的數字為0.05(此年齡組別每一萬人的入口)(圖八:藍色線)。0至4歲小童因流感而入院的數字為0.54(此年齡組別每一萬人的入口)(圖八:紅色線)。

*Report under paediatric surveillance programme*

*兒童監察安排*

In week 13 (Mar 22 to 28), no children aged 12 years or below were reported under the paediatric surveillance programme. As of Apr 2 (in the first 5 days of week 14), no new reports were received under the paediatric surveillance programme.

第13週(三月二十二日至二十八日), 兒童監察安排沒有收到新個案。截至四月二日(第14週的首5天), 沒有收到新個案。