

EV SCAN is a weekly report produced by the Enteric and Vector-borne Disease Office of the Centre for Health Protection. It summarises the surveillance findings of local situation of hand, foot and mouth disease (HFMD) and enterovirus 71 (EV71) infection.

HIGHLIGHTS

- This year, the activity of hand, foot and mouth disease (HFMD) started to rise in May, peaked in early June and began to decline in late June. The activity has returned to baseline since August but there are still sporadic cases of EV71 and severe paediatric enterovirus infections (other than EV71 and poliovirus).
- The usual peak season for HFMD and EV71 infection is from May to July. In the past few years, a smaller winter peak also occurred from October to December.
- HFMD is a common disease in children usually caused by enteroviruses such as Coxsackie viruses and EV71. EV71 infection is of particular concern as it is more likely to be associated with severe medical complications and even death.

LATEST FIGURES IN HONG KONG

HFMD (including herpangina) institutional outbreaks

Time Period	Number reported
This week, preliminary data (Week 36, Aug 31 to Sep 4)	0
Last week (Week 35, Aug 24 to Aug 30)	1
2014 as of Sep 4	267

Laboratory confirmed EV71 infection

Time Period	Number reported
This week, preliminary data (Week 36, Aug 31 to Sep 4)	1
Last week (Week 35, Aug 24 to Aug 30)	2
2014 as of Sep 4	62
Cases with severe complication in 2014 as of Sep 4	11
Fatal cases in 2014 as of Sep 4	0

Severe paediatric enterovirus infection (other than EV71 and poliovirus)

Time Period	Number reported
This week, preliminary data (Week 36, Aug 31 to Sep 4)	0
Last week (Week 35, Aug 24 to Aug 30)	1
2014 as of Sep 4	18
Fatal cases in 2014 as of Sep 4	0

ANNUAL NUMBER OF HFMD OUTBREAKS AND EV71 INFECTION IN HONG KONG

Year	Number of HFMD (including herpangina) institutional outbreaks	Persons affected in HFMD (including herpangina) institutional outbreaks	Number of EV71 cases	Number of EV71 deaths
2009	103	727	31	1
2010	851	5025	101	0
2011	253	1370	68	1
2012	382	2216	59	0
2013	779	5151	12	0

Figure 1. No. of EV71 cases by week since 2012 (preliminary data for this week)

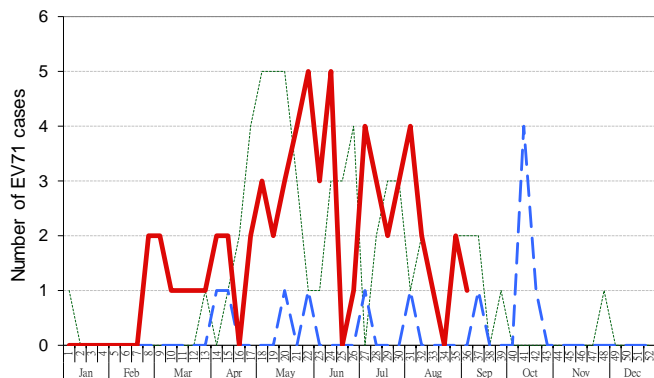


Figure 2. No. of HFMD institutional outbreaks by week since 2012 (preliminary data for this week)

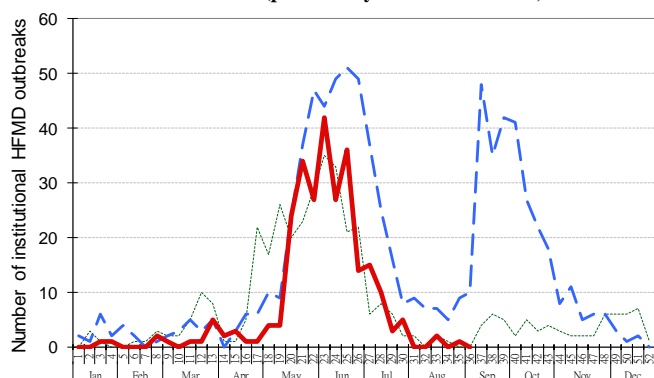


Figure 3. No. of hospital admissions of HFMD by week since 2012

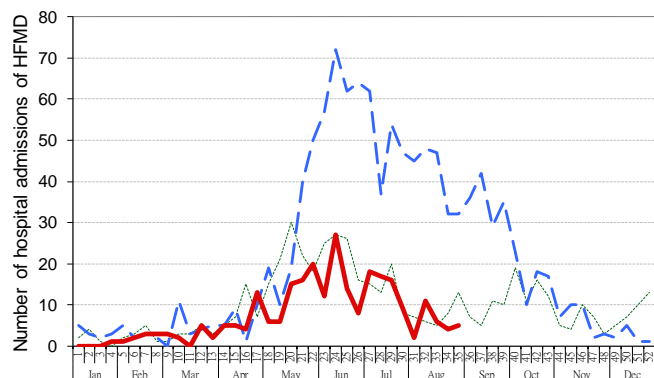


Figure 4. Accident & Emergency Departments surveillance of HFMD syndrome group since 2012

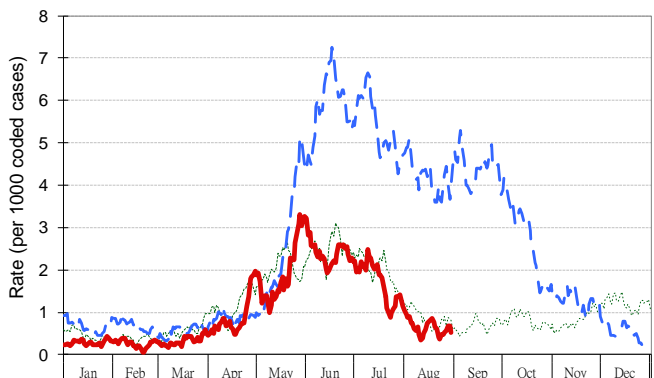


Figure 5. HFMD sentinel surveillance based at child care centres/kindergartens by week since 2012

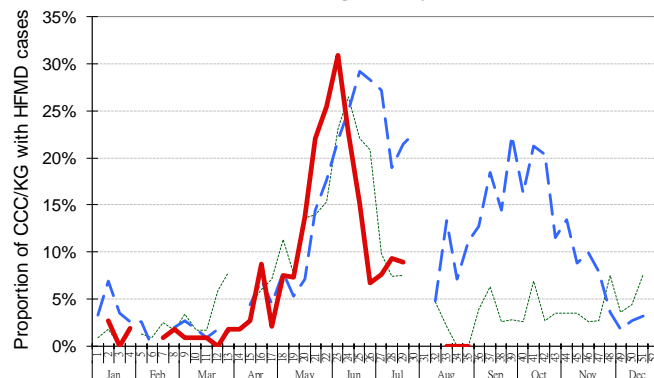


Figure 6. HFMD sentinel surveillance among general practitioners by week since 2012

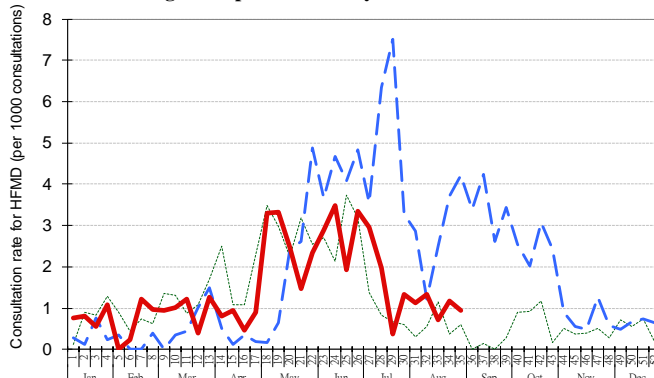
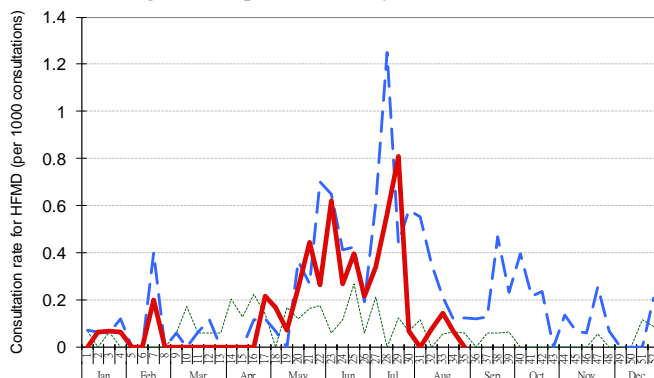


Figure 7. HFMD sentinel surveillance among general outpatient clinics by week since 2012



Legend: 2012 --- 2013 — 2014