

# FLU EXPRESS

*Flu Express* is a weekly report produced by the Respiratory Disease Office of the Centre for Health Protection. It monitors and summarizes the latest local and global influenza activities.

## Local Situation of Influenza Activity (as of Mar 29, 2012)

**Reporting period: Mar 18 – 24, 2012 (Week 12)**

- The latest surveillance data showed a further increase in local influenza activity, after its peak in late February.
- The Centre for Health Protection has collaborated with the Hospital Authority and private hospitals to monitor influenza associated intensive care unit (ICU) admissions or deaths (aged 18 years or above) since Jan 13, 2012. As of Mar 28, there were 94 cases of influenza associated ICU admissions or deaths, in which 54 of them were fatal.
- As the winter influenza season is expected to last for a few more weeks, target groups are advised to make use of the last opportunity to receive influenza vaccinations.

### Influenza-like-illness surveillance among sentinel general outpatient clinics, 2010-12

In week 12, the average consultation rate for influenza-like illness (ILI) among sentinel general outpatient clinics (GOPCs) was 5.6 ILI cases per 1,000 consultations (Figure 1).

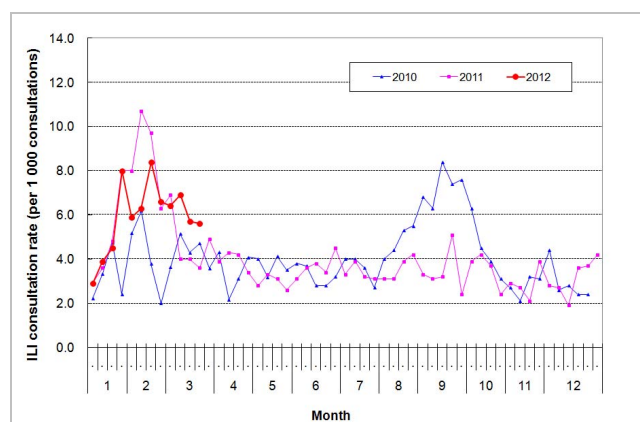


Figure 1 ILI consultation rate at sentinel GOPC, 2010-12

### Influenza-like illness surveillance among sentinel private doctors, 2010-12

In week 12, the average consultation rate for ILI among sentinel private doctors was 52.3 ILI cases per 1,000 consultations (Figure 2).

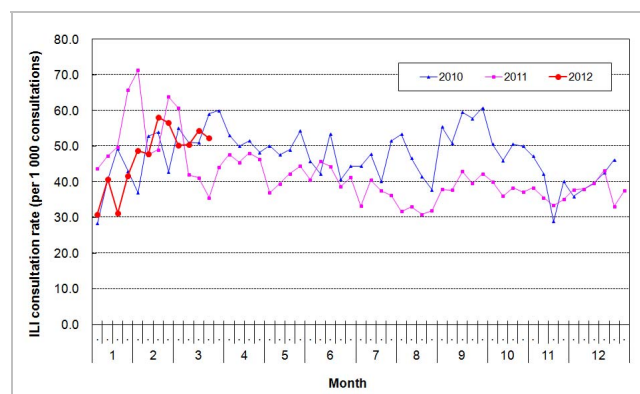


Figure 2 ILI consultation rate at sentinel GP, 2010-12

## Influenza virus detections (Laboratory surveillance), 2011-12

In week 12, the number of influenza viruses detected in the Public Health Laboratory Centre was 579, including 297 influenza B viruses, 278 influenza A (H3) viruses and 4 influenza A(H1N1)2009 viruses (Figure 3).

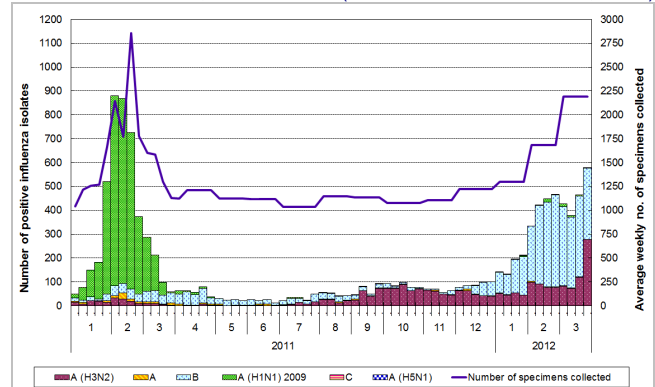


Figure 3 Influenza virus detections, 2011-12

## Influenza-like illness outbreak monitoring, 2011-12

In week 12, 24 ILI outbreaks occurring in schools/institutions were recorded (Figure 4). In the first 4 days of week 13 (Mar 25 to 28, 2012), 7 ILI outbreaks occurring in schools/institutions were recorded.

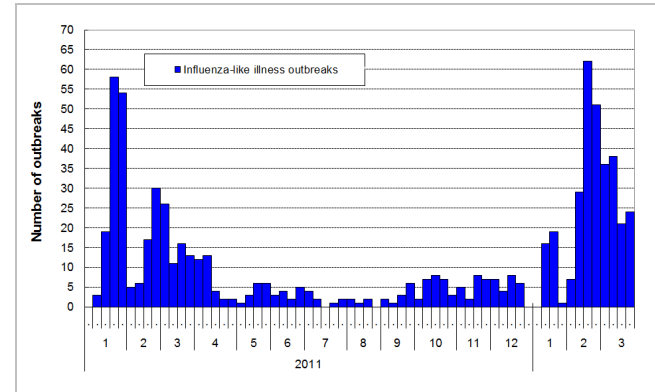


Figure 4 ILI outbreaks, 2011-12

## Influenza associated hospital admission rates and deaths based on discharge coding, 2010-12

In week 12, hospital admission rates with principal diagnosis of influenza for persons aged 0-4 years, 5-64 years and 65 years or above were 1.76, 0.08 and 0.92 cases respectively (per 10,000 people in the age group) (Figure 5). Weekly number of deaths with any diagnosis of influenza in public hospitals is also shown on the right hand side.

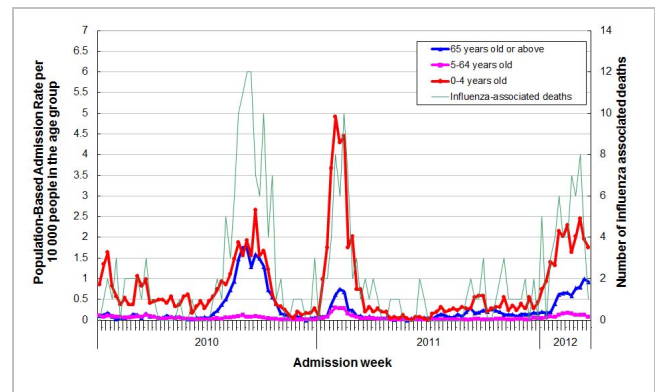


Figure 5 Influenza associated hospital admission rates and deaths, 2010-12

## Fever surveillance at sentinel child care centres/ kindergartens, 2010-12

In week 12, 1.28% of children in the sentinel child care centres/ kindergartens had fever (Figure 6).

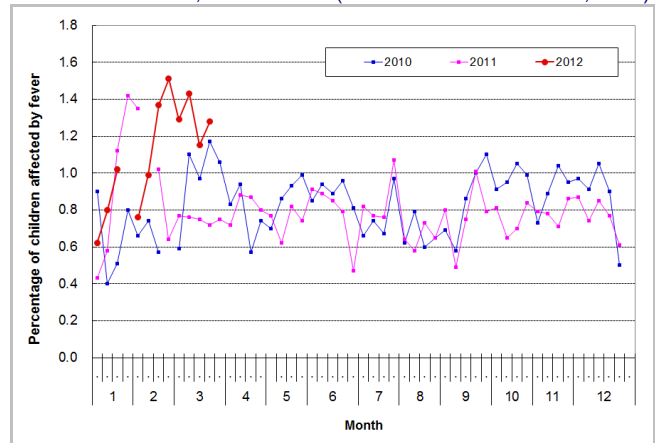


Figure 6 Percentage of children with fever at sentinel CCC/KG, 2010-12

## Fever surveillance at sentinel residential care homes for the elderly, 2010-12

In week 12, 0.13% of residents in the sentinel residential care homes for the elderly had fever (Figure 7).

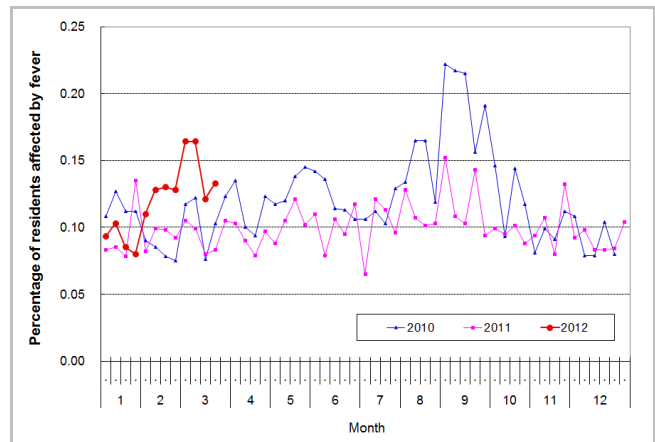


Figure 7 Percentage of residents with fever at sentinel RCHE, 2010-12

## Influenza-like illness surveillance among sentinel Chinese medicine practitioners, 2010-12

In week 12, the average consultation rate for ILI among Chinese medicine practitioners was 2.15 ILI cases per 1,000 consultations (Figure 8).

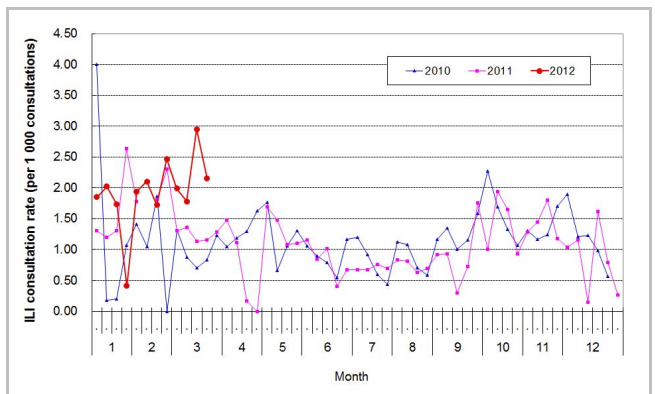


Figure 8 ILI consultation rate at sentinel CMP, 2010-12

## Enhanced Surveillance for Severe Seasonal Influenza (Aged 18 years or above)

- From Mar 21, 2012, 12:00 noon to Mar 28, 2012, 12:00 noon, 18 cases of influenza associated ICU admissions or deaths were recorded, in which 8 of them were fatal.

Note: The data reported are provisional figures and subject to further revision.

## **Surveillance of severe paediatric influenza-associated complication/death (Aged above one month and below 18 years)**

- In week 12 and the first 4 days of week 13 (Mar 25 to 28, 2012), there were no new reports of severe paediatric influenza-associated complication/death.

Note: The data reported are provisional figures and subject to further revision.

## **Surveillance of Tamiflu resistant influenza A(H1N1)2009 virus infection**

- In week 12 And the first 4 days of week 13 (Mar 25 to 28, 2012), there were no new reports of oseltamivir (Tamiflu) resistant influenza A(H1N1)2009 virus infection. There are totally 18 reports of resistance to Tamiflu in strains of influenza A(H1N1)2009 virus detected in Hong Kong since 2009.

## **Global Situation of Influenza Activity**

- In the United States (week ending Mar 17, 2012), influenza activity was elevated in some areas, but remained relatively low nationally.
- In Canada (week ending Mar 17, 2012), overall influenza activity continued to increase compared to the previous week.
- In the United Kingdom (week ending Mar 18, 2012), the weekly influenza consultation rates in England, Wales, Scotland and Northern Ireland remained low.
- In Europe (as of Mar 18 2012), influenza activity is generally decreasing but the consultation rates were above the thresholds in 50% of the reporting countries.
- In Singapore (week ending Mar 24, 2012), the number of consultations for acute respiratory infections was below the warning level.

### **Sources:**

Information have been extracted from the following sources when updates are available: [United States Centers for Disease Control and Prevention](#), [Public Health Agency of Canada](#), [United Kingdom Health Protection Agency](#), [World Health Organization/Europe Euroflu](#) and [Singapore Ministry of Health](#).