

# FLU EXPRESS

*Flu Express* is a weekly report produced by the Respiratory Disease Office of the Centre for Health Protection. It monitors and summarizes the latest local and global influenza activities.

## Local Situation of Influenza Activity (as of Apr 12, 2012)

**Reporting period: Apr 1 – 7, 2012 (Week 14)**

- The latest surveillance data showed that the overall influenza activity remained at high level.
- The Centre for Health Protection has collaborated with the Hospital Authority and private hospitals to monitor influenza associated intensive care unit (ICU) admissions or deaths (aged 18 years or above) since Jan 13, 2012. As of Apr 11, there were 113 cases of influenza associated ICU admissions or deaths, in which 64 of them were fatal.
- As the winter influenza season is expected to last for a few more weeks, target groups are advised to make use of the last opportunity to receive influenza vaccinations.

### Influenza-like-illness surveillance among sentinel general outpatient clinics, 2010-12

In week 14, the average consultation rate for influenza-like illness (ILI) among sentinel general outpatient clinics (GOPCs) was 4.6 ILI cases per 1,000 consultations (Figure 1).

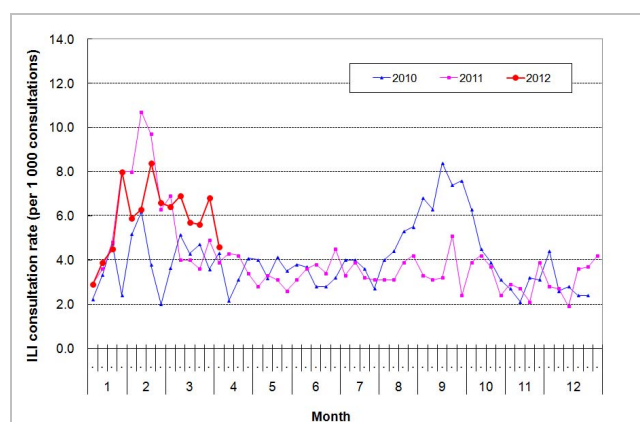


Figure 1 ILI consultation rate at sentinel GOPC, 2010-12

### Influenza-like illness surveillance among sentinel private doctors, 2010-12

In week 14, the average consultation rate for ILI among sentinel private doctors was 46.6 ILI cases per 1,000 consultations (Figure 2).

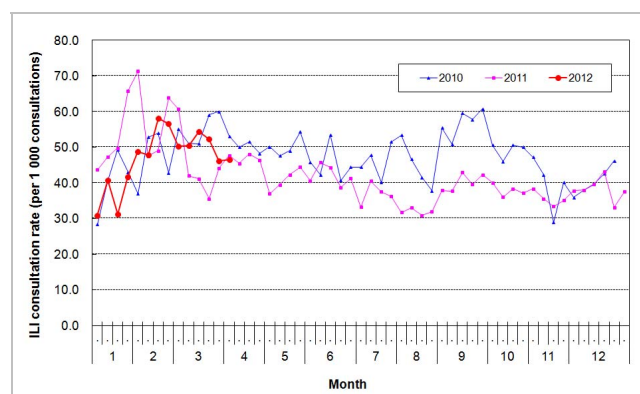


Figure 2 ILI consultation rate at sentinel GP, 2010-12

## Influenza virus detections (Laboratory surveillance), 2011-12

In week 14, the number of influenza viruses detected in the Public Health Laboratory Centre was 491, including 316 influenza A (H3) viruses, 173 influenza B viruses and 2 influenza A(H1N1)2009 viruses (Figure 3).

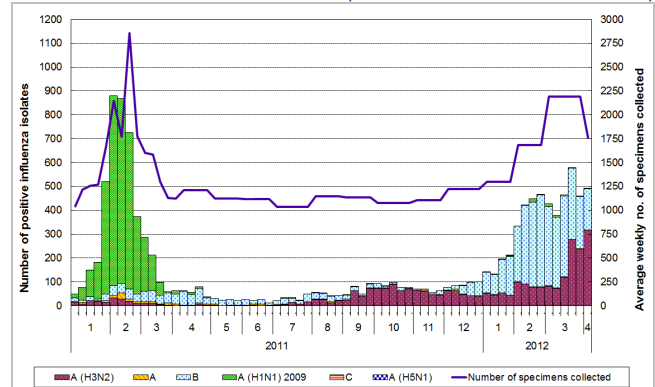


Figure 3 Influenza virus detections, 2011-12

## Influenza-like illness outbreak monitoring, 2011-12

In week 14, 4 ILI outbreaks occurring in schools/institutions were recorded (Figure 4). In the first 4 days of week 15 (Apr 8 to 11, 2012), 3 ILI outbreaks occurring in schools/institutions were recorded.

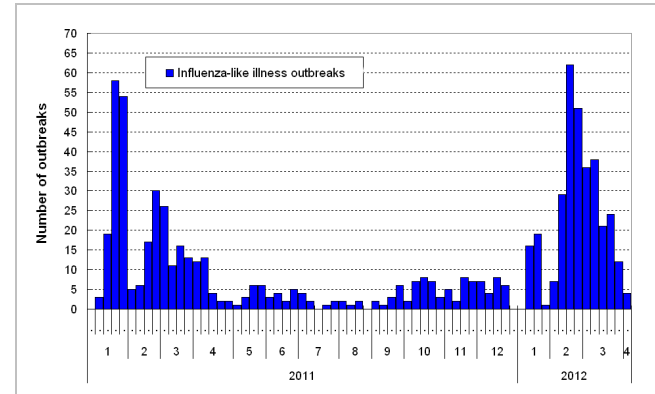


Figure 4 ILI outbreaks, 2011-12

## Rate of influenza-like illness syndrome group in accident and emergency departments, 2010-12<sup>#</sup>

In week 14, the rate of the influenza-like illness syndrome group in the accident and emergency departments was 225.3 (per 1,000 coded cases) (Figure 5).

<sup>#</sup>Note: The influenza-like illness syndrome group includes codes such as influenza, upper respiratory tract infection, fever, cough, throat pain, and pneumonia.

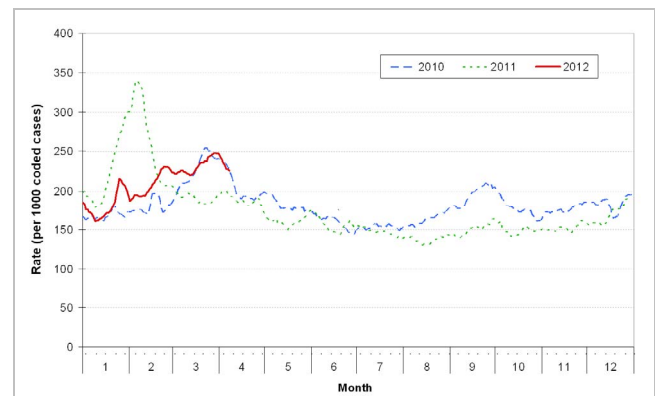


Figure 5 Rate of ILI syndrome group in AED, 2010-12

## Influenza associated hospital admission rates and deaths based on discharge coding, 2010-12

In week 14, hospital admission rates with principal diagnosis of influenza for persons aged 0-4 years, 5-64 years and 65 years or above were 1.17, 0.03 and 0.51 cases respectively (per 10,000 people in the age group) (Figure 6). Weekly number of deaths with any diagnosis of influenza in public hospitals is also shown on the right hand side.

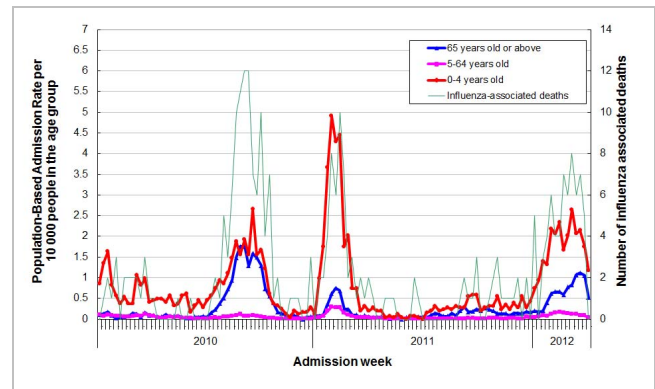


Figure 6 Influenza associated hospital admission rates and deaths, 2010-12

## Fever surveillance at sentinel child care centres/ kindergartens, 2010-12

In week 13, 1.10% of children in the sentinel child care centres/ kindergartens had fever (Figure 7). The surveillance in week 14 was suspended due to Easter holiday.

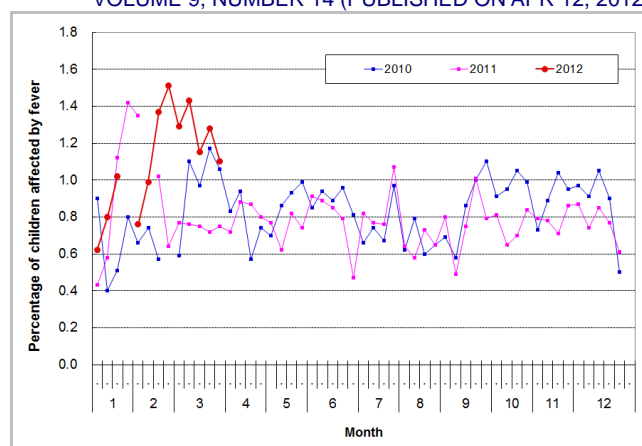


Figure 7 Percentage of children with fever at sentinel CCC/KG, 2010-12

## Fever surveillance at sentinel residential care homes for the elderly, 2010-12

In week 14, 0.11% of residents in the sentinel residential care homes for the elderly had fever (Figure 8).

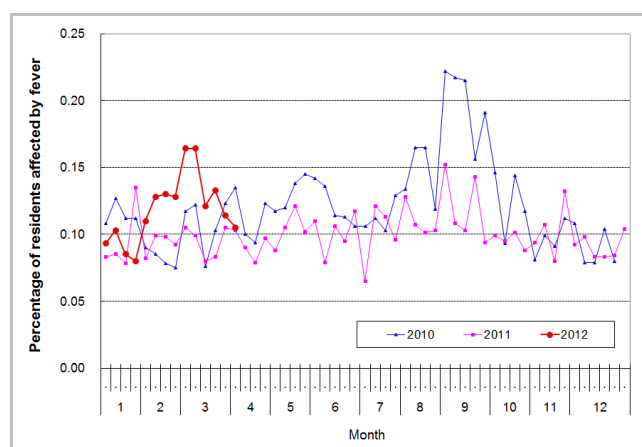


Figure 8 Percentage of residents with fever at sentinel RCHE, 2010-12

## Influenza-like illness surveillance among sentinel Chinese medicine practitioners, 2010-12

In week 14, the average consultation rate for ILI among Chinese medicine practitioners was 1.43 ILI cases per 1,000 consultations (Figure 9).

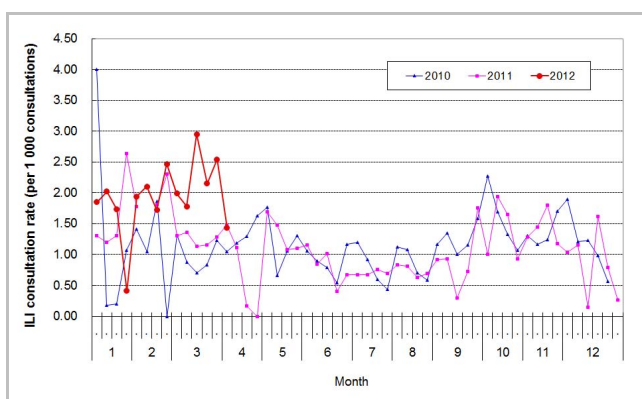


Figure 9 ILI consultation rate at sentinel CMP, 2010-12

## Enhanced Surveillance for Severe Seasonal Influenza (Aged 18 years or above)

- From Apr 3, 2012, 12:00 noon to Apr 11, 2012, 12:00 noon, 7 cases of influenza associated ICU admissions or deaths were recorded, in which 2 of them were fatal. In addition, one previously reported case who required ICU admission passed away during this reporting period.

Note: The data reported are provisional figures and subject to further revision.

## **Surveillance of severe paediatric influenza-associated complication/death (Aged above one month and below 18 years)**

- In week 14 and the first 4 days of week 15 (Apr 8 to 11, 2012), there were no new reports of severe paediatric influenza-associated complication/death.

Note: The data reported are provisional figures and subject to further revision.

## **Surveillance of Tamiflu resistant influenza A(H1N1)2009 virus infection**

- In week 14 and the first 4 days of week 15 (Apr 8 to 11, 2012), there were no new reports of oseltamivir (Tamiflu) resistant influenza A(H1N1)2009 virus infection. There are totally 18 reports of resistance to Tamiflu in strains of influenza A(H1N1)2009 virus detected in Hong Kong since 2009.

## **Global Situation of Influenza Activity**

- In the United States (week ending Mar 31, 2012), influenza activity was elevated in some areas, but declined nationally and in most regions.
- In Canada (week ending Mar 31, 2012), overall influenza activity started to decline but remained elevated in some regions of the country.
- In the United Kingdom (week ending Apr 1, 2012), the weekly influenza consultation rates in England, Wales, Scotland and Northern Ireland remained low.
- In Europe (as of Apr 1 2012), most of the countries had decreasing trend of influenza activity, and all of the reporting countries were at low or medium intensity.
- In Singapore (week ending Apr 7, 2012), the number of consultations for acute respiratory infections was below the warning level.

### **Sources:**

Information have been extracted from the following sources when updates are available: [United States Centers for Disease Control and Prevention](#), [Public Health Agency of Canada](#), [United Kingdom Health Protection Agency](#), [World Health Organization/Europe Euroflu](#) and [Singapore Ministry of Health](#).