

FLU EXPRESS

Flu Express is a weekly report produced by the Respiratory Disease Office of the Centre for Health Protection. It monitors and summarizes the latest local and global influenza activities.

Local Situation of Influenza Activity (as of Jun 13, 2012)

Reporting period: Jun 3– 9, 2012 (Week 23)

- The latest surveillance data showed that the local influenza activity still remained at high level.
- The Centre for Health Protection has collaborated with the Hospital Authority and private hospitals to monitor influenza associated intensive care unit (ICU) admissions or deaths (aged 18 years or above) since Jan 13, 2012. As of Jun 13, there were 268 cases of influenza associated ICU admissions or deaths, in which 173 of them were fatal.

Influenza-like-illness surveillance among sentinel general outpatient clinics, 2010-12

In week 23, the average consultation rate for influenza-like illness (ILI) among sentinel general outpatient clinics (GOPCs) was 5.8 ILI cases per 1,000 consultations (Figure 1).

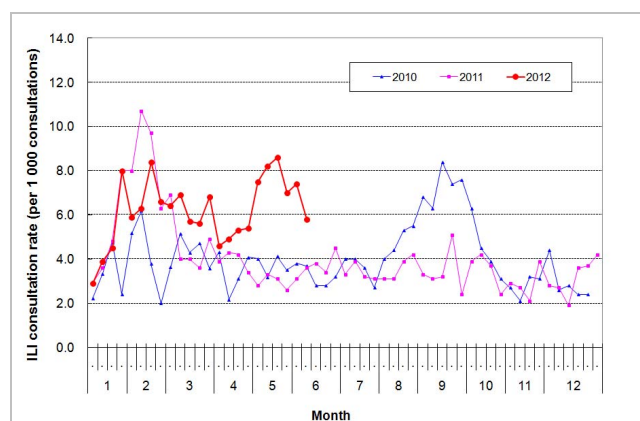


Figure 1 ILI consultation rate at sentinel GOPC, 2010-12

Influenza-like illness surveillance among sentinel private doctors, 2010-12

In week 23, the average consultation rate for ILI among sentinel private doctors was 50.8 ILI cases per 1,000 consultations (Figure 2).

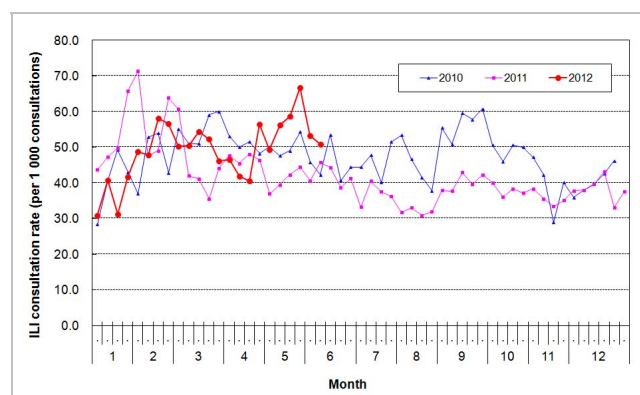


Figure 2 ILI consultation rate at sentinel GP, 2010-12

Influenza virus detections (Laboratory surveillance), 2011-12

In week 23, the number of influenza viruses detected in the Public Health Laboratory Centre was 895, including 886 influenza A (H3) viruses, 5 influenza A(H1N1)2009 viruses, 3 influenza B viruses and 1 influenza A virus (Figure 3).

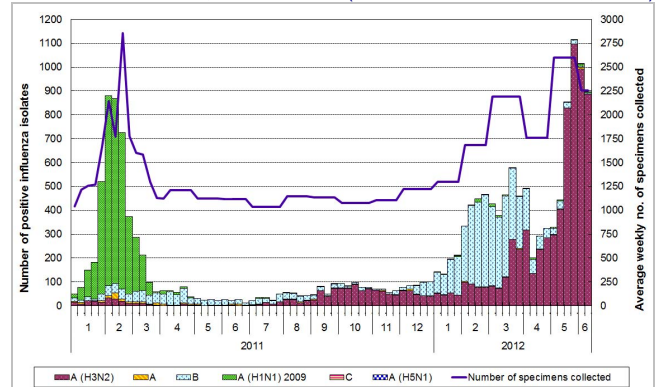


Figure 3 Influenza virus detections, 2011-12

Influenza-like illness outbreak monitoring, 2011-12

In week 23, 27 ILI outbreaks occurring in schools/institutions were recorded (Figure 4). In the first 4 days of week 24 (Jun 10 to 13, 2012), 20 ILI outbreaks occurring in schools/institutions were recorded.

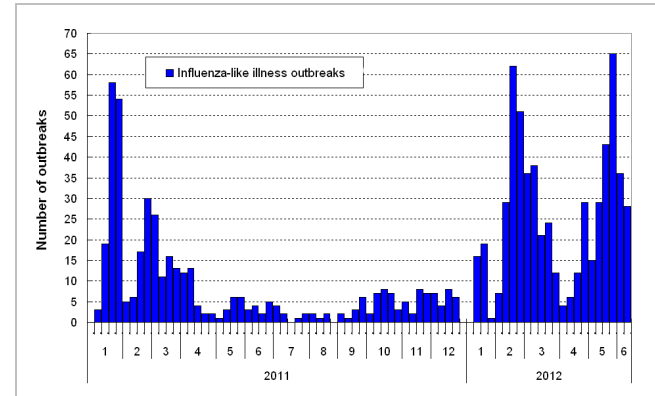


Figure 4 ILI outbreaks, 2011-12

Rate of influenza-like illness syndrome group in accident and emergency departments, 2010-12[#]

In week 23, the rate of the influenza-like illness syndrome group in the accident and emergency departments was 208.9 (per 1,000 coded cases) (Figure 5).

[#]Note: The influenza-like illness syndrome group includes codes such as influenza, upper respiratory tract infection, fever, cough, throat pain, and pneumonia.

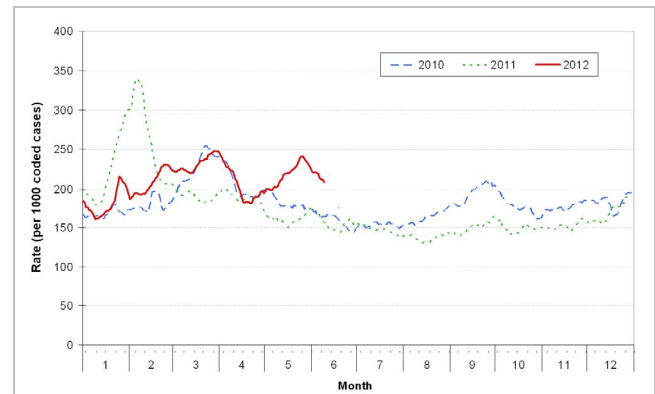


Figure 5 Rate of ILI syndrome group in AED, 2010-12

Influenza associated hospital admission rates and deaths based on discharge coding, 2010-12

In week 23, hospital admission rates with principal diagnosis of influenza for persons aged 0-4 years, 5-64 years and 65 years or above were 1.87, 0.10 and 1.69 cases respectively (per 10,000 people in the age group) (Figure 6). Weekly number of deaths with any diagnosis of influenza in public hospitals is also shown on the right hand side.

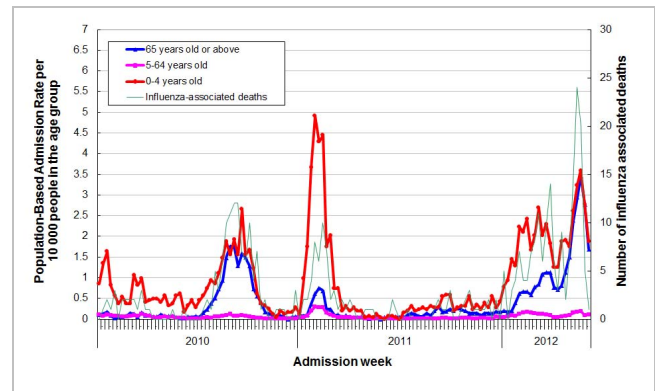


Figure 6 Influenza associated hospital admission rates and deaths, 2010-12

Fever surveillance at sentinel child care centres/ kindergartens, 2010-12

In week 23, 1.14% of children in the sentinel child care centres/ kindergartens had fever (Figure 7).

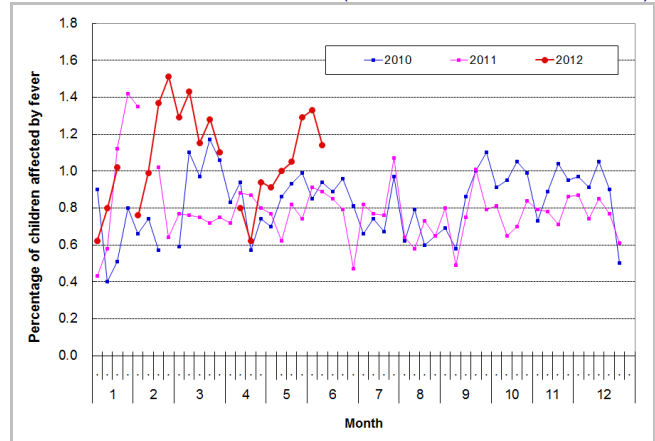


Figure 7 Percentage of children with fever at sentinel CCC/KG, 2010-12

Fever surveillance at sentinel residential care homes for the elderly, 2010-12

In week 23, 0.13% of residents in the sentinel residential care homes for the elderly had fever (Figure 8).

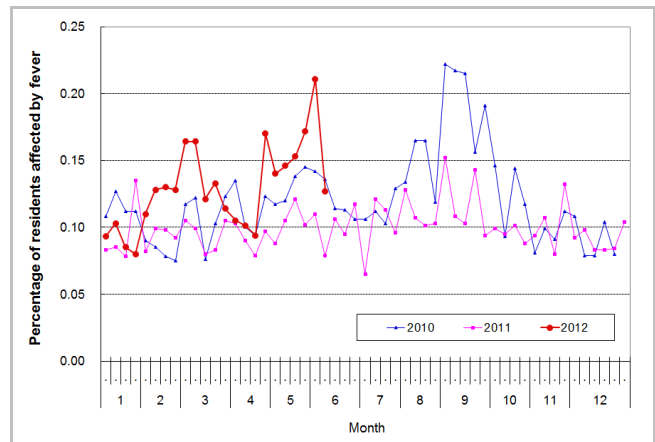


Figure 8 Percentage of residents with fever at sentinel RCHE, 2010-12

Influenza-like illness surveillance among sentinel Chinese medicine practitioners, 2010-12

In week 23, the average consultation rate for ILI among Chinese medicine practitioners was 0.83 ILI case per 1,000 consultations (Figure 9).

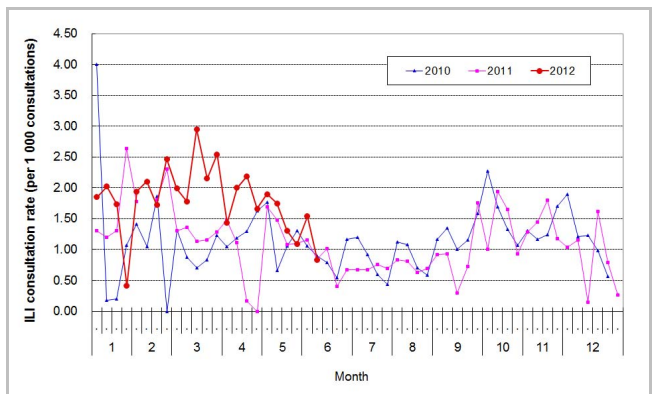


Figure 9 ILI consultation rate at sentinel CMP, 2010-12

Enhanced Surveillance for Severe Seasonal Influenza (Aged 18 years or above)

- From Jun 6, 2012, 12:00 noon to Jun 13, 2012, 12:00 noon, 14 cases of influenza associated ICU admissions or deaths were recorded, in which 12 of them were fatal. In addition, two previously reported cases who required ICU admission passed away during this reporting period.

Note: The data reported are provisional figures and subject to further revision.

Surveillance of severe paediatric influenza-associated complication/death (Aged above one month and below 18 years)

- In week 23, one case of severe paediatric influenza-associated complication involving a boy aged 4 years old who had developed severe pneumonia was reported. He is now in stable condition. His nasopharyngeal aspirate specimen was tested positive for influenza A. In the first 4 days of week 24 (Jun 10 to 13, 2012), there were no new reports of severe paediatric influenza-associated complication/death.

Note: The data reported are provisional figures and subject to further revision.

Surveillance of Tamiflu resistant influenza A(H1N1)2009 virus infection

- In week 23, one case of oseltamivir (Tamiflu) resistant influenza A(H1N1)2009 virus infection involving a 1-year-old girl who had developed fever was reported. She had been discharged. The virus strain detected was sensitive to zanamivir (Relenza). In the first 4 days of week 24 (Jun 10 to 13, 2012), there were no new reports of oseltamivir (Tamiflu) resistant influenza A(H1N1)2009 virus infection. There are totally 20 reports of Tamiflu resistant influenza A(H1N1)2009 virus detected in Hong Kong since 2009.

Global Situation of Influenza Activity

- In the United States (week ending Jun 2, 2012), the ILI consultation rate was below its national baseline.
- In Canada (week ending Jun 2, 2012), the overall influenza activity was low and continued to decline.
- In the United Kingdom (as of Jun 7, 2012), the ILI consultation rate remained low.
- In Europe (week ending Jun 3, 2012), ILI consultation rate was at low level in all countries.
- In New Zealand (week ending Jun 3, 2012), the national consultation rate for ILI was below the baseline.
- In Singapore (week ending Jun 9, 2012), the number of consultations for acute respiratory infections was below the warning level.

Sources:

Information have been extracted from the following sources when updates are available: [United States Centers for Disease Control and Prevention](#), [Public Health Agency of Canada](#), [United Kingdom Health Protection Agency](#), [World Health Organization/Europe Euroflu](#), [New Zealand Ministry of Health](#) and [Singapore Ministry of Health](#).