

FLU EXPRESS



Flu Express is a weekly report produced by the Respiratory Disease Office of the Centre for Health Protection. It monitors and summarizes the latest local and global influenza activities.

Local Situation of Influenza Activity (as of Aug 8, 2012)

Reporting period: Jul 29 – Aug 4, 2012 (Week 31)

- The latest surveillance data showed that the influenza activity was at baseline level.
- Influenza can cause serious illnesses in high-risk individuals and even healthy persons. Except for those with contraindications, influenza vaccination is suitable for all members of the public.
- Children above the age of six months and less than 6 years old as well as elderly people aged 65 years and above will be eligible to receive subsidised vaccination from enrolled private doctors participating in the Government's vaccination subsidy schemes starting from September 24.

Influenza-like-illness surveillance among sentinel general outpatient clinics, 2010-12

In week 31, the average consultation rate for influenza-like illness (ILI) among sentinel general outpatient clinics (GOPCs) was 3.3 ILI cases per 1,000 consultations (Figure 1).

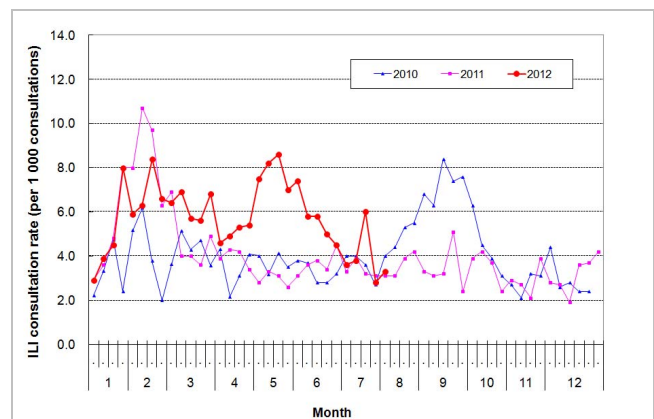


Figure 1 ILI consultation rate at sentinel GOPC, 2010-12

Influenza-like illness surveillance among sentinel private doctors, 2010-12

In week 31, the average consultation rate for ILI among sentinel private doctors was 24.7 ILI cases per 1,000 consultations (Figure 2).

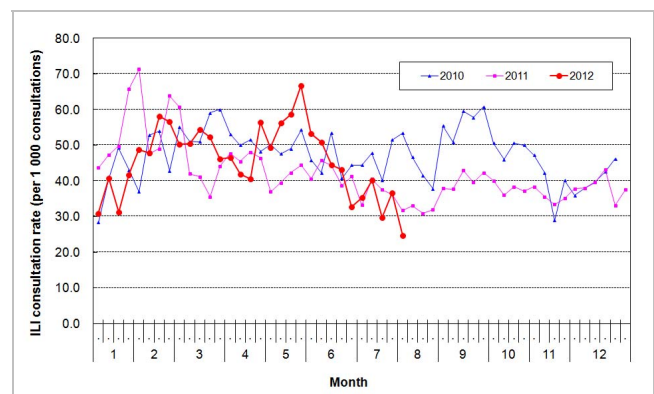


Figure 2 ILI consultation rate at sentinel GP, 2010-12

Influenza virus detections (Laboratory surveillance), 2011-12

In week 31, the number of influenza viruses detected in the Public Health Laboratory Centre was 85, including 76 influenza A (H3) viruses, 4 influenza B viruses, 4 influenza A(H1N1)2009 viruses and 1 influenza A virus (Figure 3).

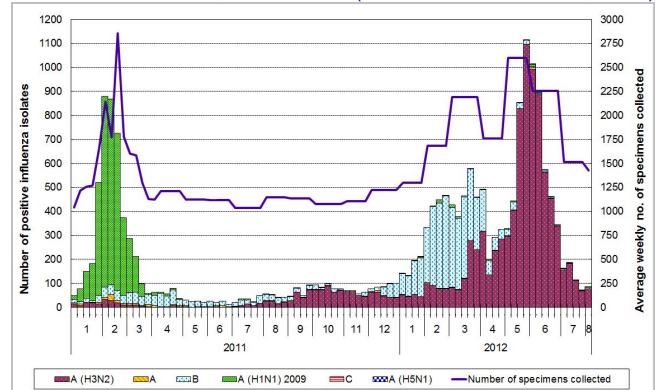


Figure 3 Influenza virus detections, 2011-12

Influenza-like illness outbreak monitoring, 2011-12

In week 31, 2 ILI outbreaks occurring in schools/institutions were recorded (Figure 4). In the first 4 days of week 32 (Aug 5 to Aug 8, 2012), no ILI outbreaks occurring in schools/institutions were recorded.

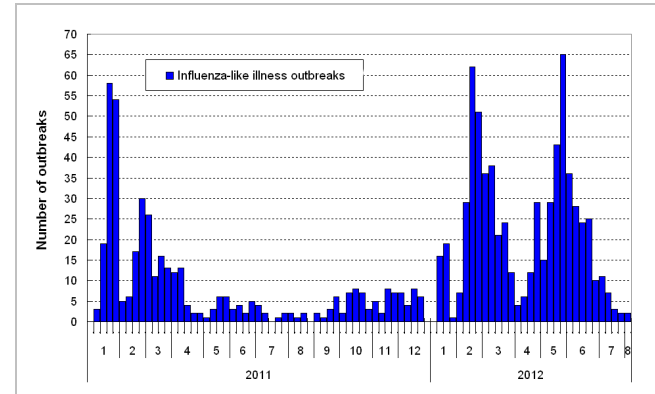


Figure 4 ILI outbreaks, 2011-12

Rate of influenza-like illness syndrome group in accident and emergency departments, 2010-12[#]

In week 31, the rate of the influenza-like illness syndrome group in the accident and emergency departments was 127.9 (per 1,000 coded cases) (Figure 5).

[#]Note: The influenza-like illness syndrome group includes codes such as influenza, upper respiratory tract infection, fever, cough, throat pain, and pneumonia.

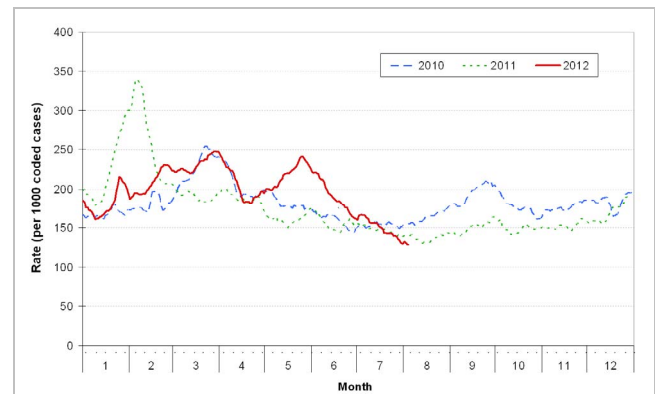


Figure 5 Rate of ILI syndrome group in AED, 2010-12

Influenza associated hospital admission rates and deaths based on discharge coding, 2010-12

In week 31, hospital admission rates with principal diagnosis of influenza for persons aged 0-4 years, 5-64 years and 65 years or above were 0.39, 0.01 and 0.18 cases respectively (per 10,000 people in the age group) (Figure 6). Weekly number of deaths with any diagnosis of influenza in public hospitals is also shown on the right hand side.

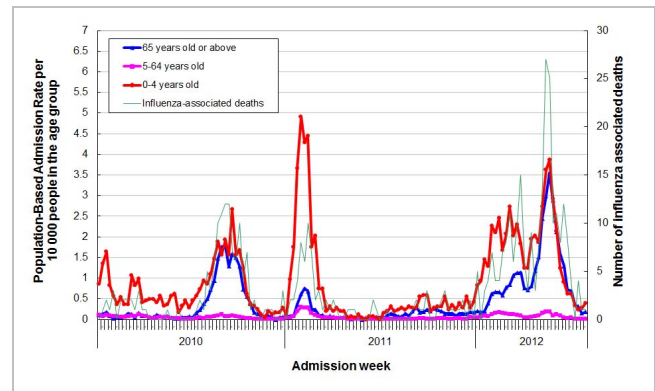


Figure 6 Influenza associated hospital admission rates and deaths, 2010-12

Fever surveillance at sentinel child care centres/ kindergartens, 2010-12

In week 29, 0.79% of children in the sentinel child care centres/ kindergartens had fever (Figure 7). The surveillance in week 30 and 31 was suspended due to summer holidays.

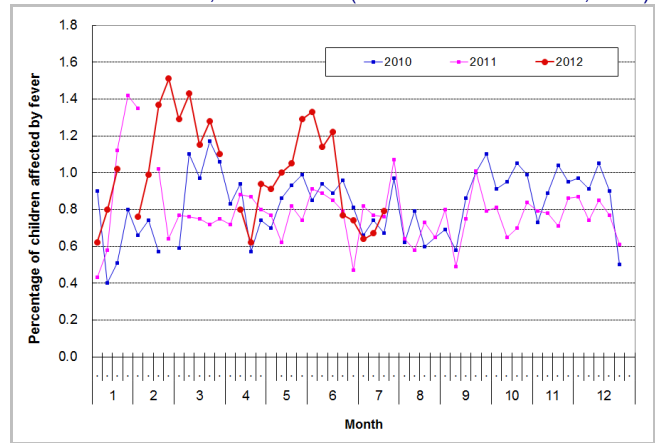


Figure 7 Percentage of children with fever at sentinel CCC/KG, 2010-12

Fever surveillance at sentinel residential care homes for the elderly, 2010-12

In week 31, 0.11% of residents in the sentinel residential care homes for the elderly had fever (Figure 8).

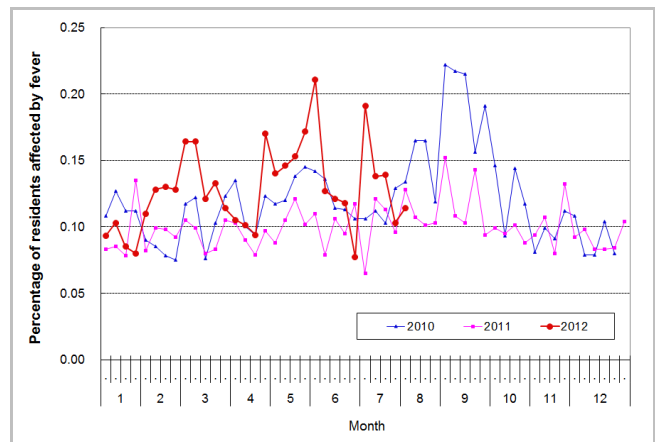


Figure 8 Percentage of residents with fever at sentinel RCHE, 2010-12

Influenza-like illness surveillance among sentinel Chinese medicine practitioners, 2010-12

In week 31, the average consultation rate for ILI among Chinese medicine practitioners was 0.46 ILI case per 1,000 consultations (Figure 9).

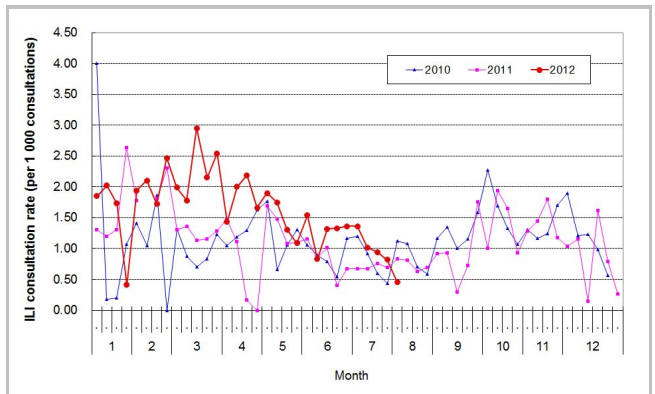


Figure 9 ILI consultation rate at sentinel CMP, 2010-12

Surveillance of severe paediatric influenza-associated complication/death (Aged above one month and below 18 years)

- In week 31 and the first 4 days of week 32 (Aug 5 to 8, 2012), there were no new reports of severe paediatric influenza-associated complication/death.

Note: The data reported are provisional figures and subject to further revision.

Surveillance of Tamiflu resistant influenza A(H1N1)2009 virus infection

- In week 31 and the first 4 days of week 32 (Aug 5 to 8, 2012), there were no new reports of oseltamivir (Tamiflu) resistant influenza A(H1N1)2009 virus infection. There are totally 21 reports of Tamiflu resistant influenza A(H1N1)2009 virus detected in Hong Kong since 2009.

Global Situation of Influenza Activity

- In the United States (week ending Jul 28, 2012), the ILI consultation rate was below its national baseline.
- In Canada (week ending Jul 28, 2012), the overall influenza activity remained low.
- In the United Kingdom (as of Aug 2, 2012), the ILI consultation rate remained low.
- In Europe (week ending Jul 29, 2012), the ILI consultation rate was at low level in all countries.
- In Australia (week ending Jul 20, 2012), the ILI activity started to decrease but was currently above the seasonal peaks reported in 2010 and 2011.
- In New Zealand (week ending Aug 5, 2012), the ILI consultation rate continued to increase.
- In Singapore (week ending Aug 4, 2012), the number of consultations for acute respiratory infections was below the warning level.

Sources:

Information have been extracted from the following sources when updates are available: [United States Centers for Disease Control and Prevention](#), [Public Health Agency of Canada](#), [United Kingdom Health Protection Agency](#), [World Health Organization/Europe Euroflu](#), [Australia Department of Health and Ageing](#), [New Zealand Ministry of Health](#) and [Singapore Ministry of Health](#).