

FLU EXPRESS

Flu Express is a weekly report produced by the Respiratory Disease Office of the Centre for Health Protection. It monitors and summarizes the latest local and global influenza activities.

Local Situation of Influenza Activity (as of Aug 22, 2012)

Reporting period: Aug 12 – 18, 2012 (Week 33)

- The latest surveillance data showed that the influenza activity was at baseline level.
- Influenza can cause serious illnesses in high-risk individuals and even healthy persons. Except for those with contraindications, influenza vaccination is suitable for all members of the public.
- Children between the age of six months and less than 6 years old as well as elderly people aged 65 years and above will be eligible to receive subsidised vaccination from enrolled private doctors participating in the Government's vaccination subsidy schemes starting from September 24.

Influenza-like-illness surveillance among sentinel general outpatient clinics, 2010-12

In week 33, the average consultation rate for influenza-like illness (ILI) among sentinel general outpatient clinics (GOPCs) was 3.6 ILI cases per 1,000 consultations (Figure 1).

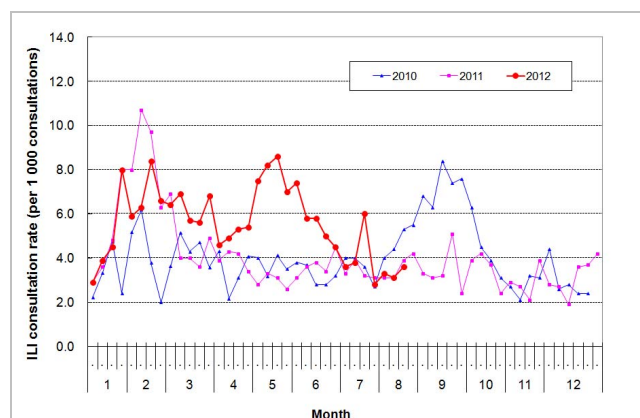


Figure 1 ILI consultation rate at sentinel GOPC, 2010-12

Influenza-like illness surveillance among sentinel private doctors, 2010-12

In week 33, the average consultation rate for ILI among sentinel private doctors was 27.0 ILI cases per 1,000 consultations (Figure 2).

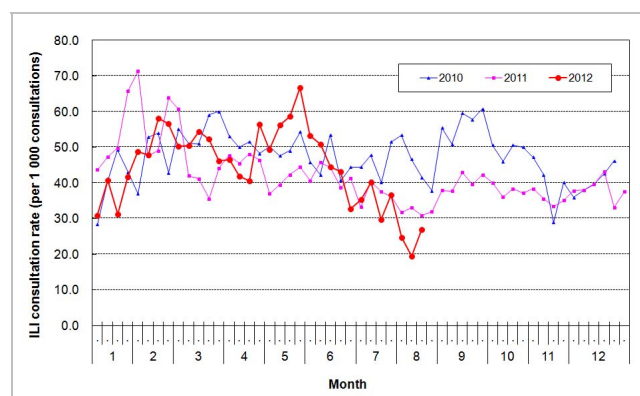


Figure 2 ILI consultation rate at sentinel GP, 2010-12

Influenza virus detections (Laboratory surveillance), 2011-12

In week 33, the number of influenza viruses detected in the Public Health Laboratory Centre was 46, including 44 influenza A (H3) viruses and 2 influenza A(H1N1)2009 viruses (Figure 3).

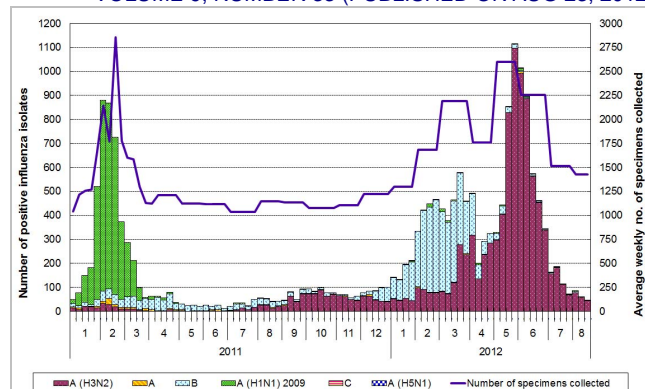


Figure 3 Influenza virus detections, 2011-12

Influenza-like illness outbreak monitoring, 2011-12

In week 33, 1 ILI outbreak occurring in an institution was recorded (Figure 4). In the first 4 days of week 34 (Aug 19 to 22, 2012), 1 ILI outbreak occurring in an institution was recorded.

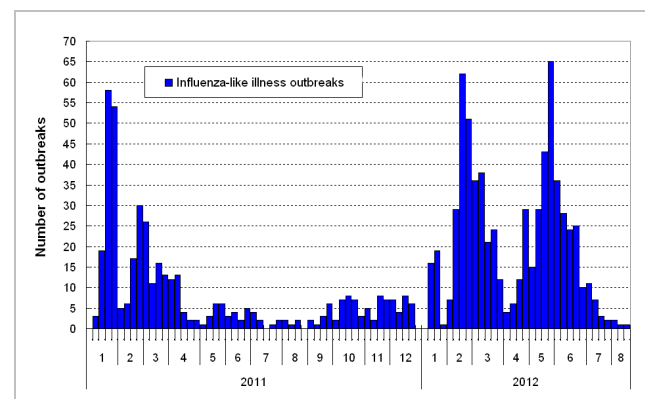


Figure 4 ILI outbreaks, 2011-12

Rate of influenza-like illness syndrome group in accident and emergency departments, 2010-12[#]

In week 33, the rate of the influenza-like illness syndrome group in the accident and emergency departments was 121.3 (per 1,000 coded cases) (Figure 5).

[#]Note: The influenza-like illness syndrome group includes codes such as influenza, upper respiratory tract infection, fever, cough, throat pain, and pneumonia.

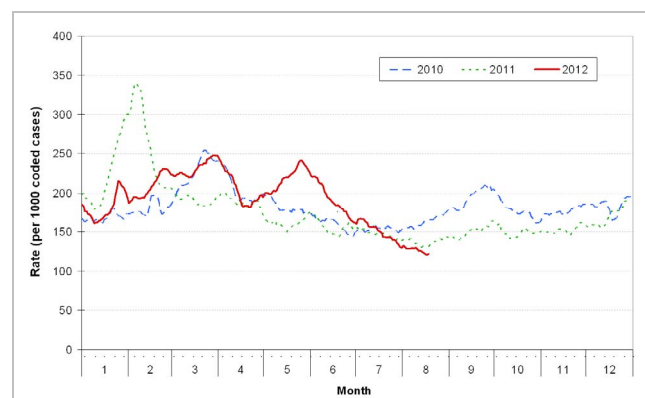


Figure 5 Rate of ILI syndrome group in AED, 2010-12

Influenza associated hospital admission rates and deaths based on discharge coding, 2010-12

In week 33, hospital admission rates with principal diagnosis of influenza for persons aged 0-4 years, 5-64 years and 65 years or above were 0.12, 0.002 and 0.15 cases respectively (per 10,000 people in the age group) (Figure 6). Weekly number of deaths with any diagnosis of influenza in public hospitals is also shown on the right hand side.

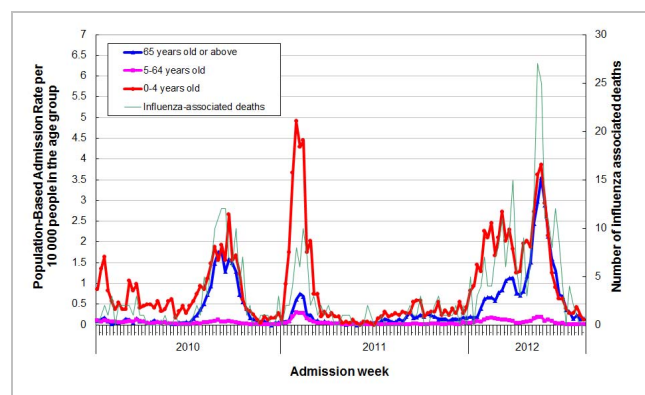


Figure 6 Influenza associated hospital admission rates and deaths, 2010-12

Fever surveillance at sentinel child care centres/ kindergartens, 2010-12

In week 33, 0.74% of children in the sentinel child care centres/ kindergartens had fever (Figure 7).

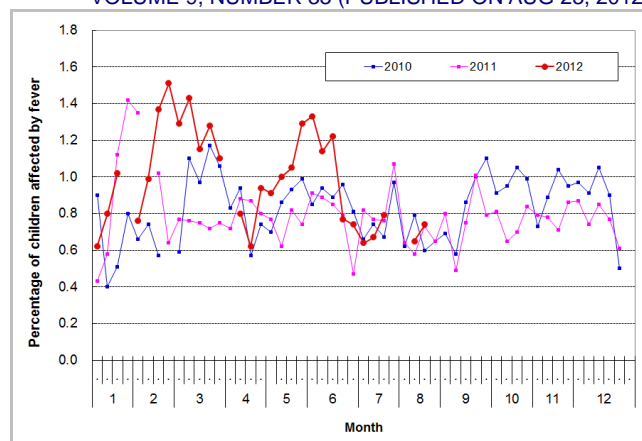


Figure 7 Percentage of children with fever at sentinel CCC/KG, 2010-12

Fever surveillance at sentinel residential care homes for the elderly, 2010-12

In week 33, 0.12% of residents in the sentinel residential care homes for the elderly had fever (Figure 8).

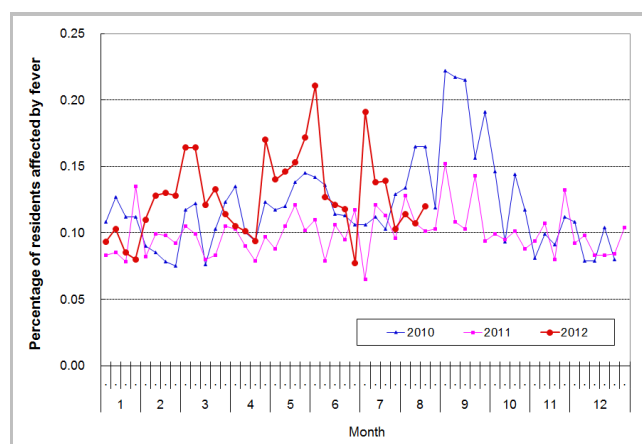


Figure 8 Percentage of residents with fever at sentinel RCHE, 2010-12

Influenza-like illness surveillance among sentinel Chinese medicine practitioners, 2010-12

In week 33, the average consultation rate for ILI among Chinese medicine practitioners was 1.07 ILI cases per 1,000 consultations (Figure 9).

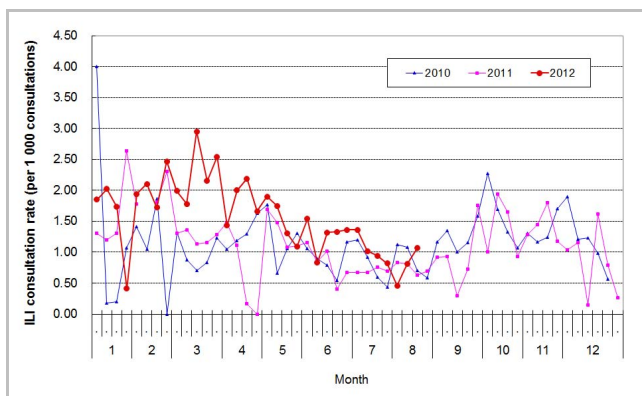


Figure 9 ILI consultation rate at sentinel CMP, 2010-12

Surveillance of severe paediatric influenza-associated complication/death (Aged above one month and below 18 years)

- In week 33 and the first 4 days of week 34 (Aug 19 to 22, 2012), there were no new reports of severe paediatric influenza-associated complication/death.

Note: The data reported are provisional figures and subject to further revision.

Surveillance of Tamiflu resistant influenza A(H1N1)2009 virus infection

- In week 33 and the first 4 days of week 34 (Aug 19 to 22, 2012), there were no new reports of oseltamivir (Tamiflu) resistant influenza A(H1N1)2009 virus infection. There are totally 22 reports of Tamiflu resistant influenza A(H1N1)2009 virus detected in Hong Kong since 2009.

Global Situation of Influenza Activity

- In the United States (week ending Aug 11, 2012), the ILI consultation rate was below its national baseline.
- In Canada (week ending Aug 11, 2012), the overall influenza activity remained low.
- In the United Kingdom (as of Aug 16, 2012), the ILI consultation rate remained low.
- In Europe (week ending Aug 12, 2012), the ILI consultation rate was at low level in all countries.
- In Australia (week ending Aug 3, 2012), the influenza activity continued to decrease.
- In New Zealand (week ending Aug 19, 2012), the ILI consultation rate had dropped.
- In Singapore (week ending Aug 18, 2012), the number of consultations for acute respiratory infections was below the warning level.

Sources:

Information have been extracted from the following sources when updates are available: [United States Centers for Disease Control and Prevention](#), [Public Health Agency of Canada](#), [United Kingdom Health Protection Agency](#), [World Health Organization/Europe Euroflu](#), [Australia Department of Health and Ageing](#), [New Zealand Ministry of Health](#) and [Singapore Ministry of Health](#).