

# Flu Express

## 流感速遞

*Flu Express* is a weekly report produced by the Respiratory Disease Office of the Centre for Health Protection. It monitors and summaries the latest local and global influenza activities.

流感速遞是由衛生防護中心呼吸疾病辦事處每星期出版有關監測本地及世界各地的流行性感冒流行情況的總結報告。

### Local Situation of Influenza Activity (as of January 19, 2011)

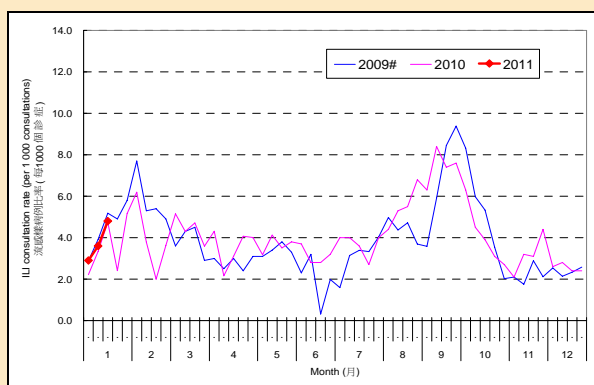
#### 本地流感流行情況 (截至2011年1月19日)

Reporting period: 9 - 15 January, 2011 (Week 3) 報告週期: 2011 年 1 月 9 日至 15 日 (第 3 週)

- The latest surveillance data showed that the overall influenza activity has increased, indicating the arrival of the winter influenza season.  
最新的監測數據顯示整體流感活躍程度上升, 顯示冬季流感季節經已來臨。
- The currently circulating influenza viruses in Hong Kong included influenza A(H1N1)2009 (i.e., human swine influenza), influenza B and influenza A(H3N2). They were antigenically similar to this year's vaccine viruses, so the vaccine would be able to provide protection against influenza infection.  
現時流行的流感病毒包括甲型(H1N1)2009 流感病毒 (即人類豬型流感病毒)、乙型流感病毒及甲型 (H3N2) 流感病毒, 在抗原上與今年的季節性流感疫苗的病毒相似, 故接種疫苗能有效預防感染流感。
- The local influenza activity is expected to increase further during the next few weeks. Target groups are advised to receive influenza vaccinations as soon as possible to protect their health.  
本地流感活躍程度預料會在未來數星期進一步上升。目標組別人士應盡快接種流感疫苗以保障健康。

Figure 1: Influenza-like illness surveillance among sentinel general outpatient clinics<sup>#</sup>, 2009-11

圖一: 定點普通科診所的流感樣病例監測<sup>#</sup>, 2009-11

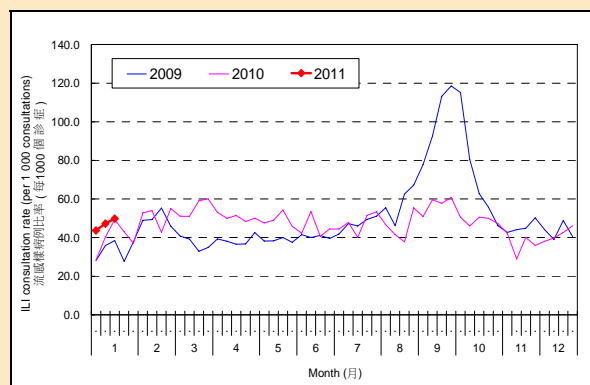


In week 3, the average consultation rate for influenza-like illness (ILI) among sentinel general outpatient clinics (GOPCs) was 4.8 ILI cases per 1,000 consultations (Figure 1).

在第 3 週, 定點普通科診所呈報的流感樣病例個案平均數為 4.8 宗 (每千個診症計) (圖一)。

Figure 2: Influenza-like illness surveillance among sentinel private doctors, 2009-11

圖二: 定點私家醫生的流感樣病例監測, 2009-11



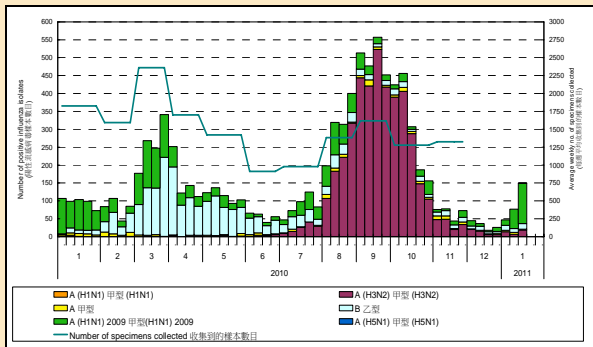
In week 3, the average consultation rate for ILI among sentinel private doctors was 49.8 ILI cases per 1,000 consultations (Figure 2).

在第 3 週, 定點私家醫生呈報的流感樣病例個案平均數為 49.8 宗 (每千個診症計) (圖二)。

<sup>#</sup> During the operation of the 8 Designated Flu Clinics (DFCs) from week 25 of 2009 to week 21 of 2010, statistics from the eight DFCs were not included in the ILI surveillance among sentinel GOPCs.

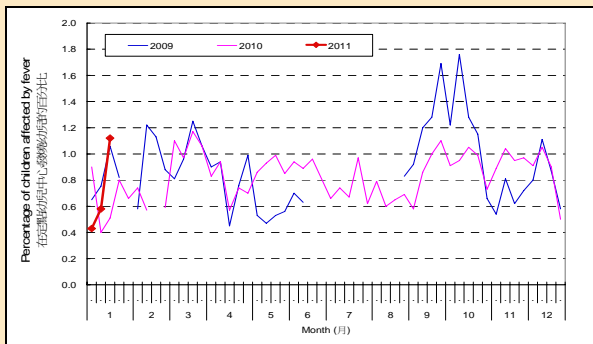
在八間指定流感診所運作期間(由 2009 年的第 25 週至 2010 年的第 21 週), 定點普通科診所的流感樣病例監測沒有包括八間指定流感診所的統計數字。

**Figure 3: Influenza virus detections (Laboratory surveillance), 2010-11**  
**圖三: 流行性感冒病毒化驗數目 (實驗室監測), 2010-11**



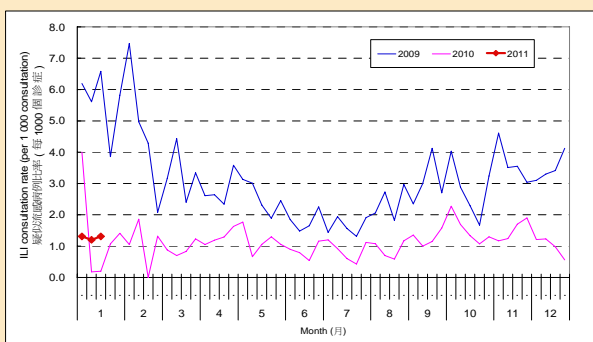
The number of influenza viruses detected in the Public Health Laboratory Centre in week 3 was 149, including 112 influenza A (H1N1)2009 viruses, 19 influenza A (H3) viruses, 16 influenza B viruses and 2 influenza A viruses (Figure 3).  
 在第 3 週, 公共衛生檢測中心共檢測到 149 個流行性感冒病毒的樣本, 當中包括 112 個甲型(H1N1)2009 流感病毒樣本、19 個甲型(H3)流感病毒樣本、16 個乙型流感病毒樣本及 2 個甲型流感病毒樣本 (圖三)。

**Figure 5: Fever surveillance at sentinel child care centres/kindergartens, 2009-11**  
**圖五: 定點幼兒中心/幼稚園的發燒監測, 2009-11**



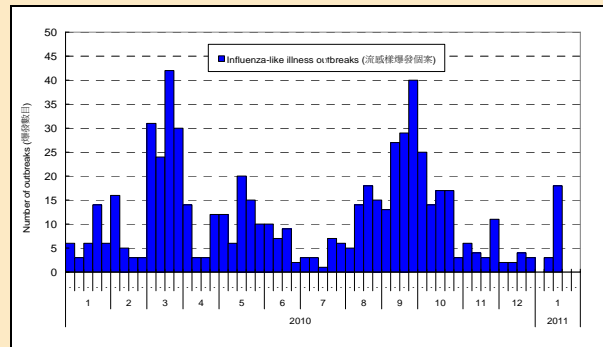
In week 3, 1.12% of children in the sentinel child care centres/kindergartens had fever (Figure 5).  
 在第 3 週, 1.12% 定點幼兒中心/幼稚園的幼兒出現發燒徵狀 (圖五)。

**Figure 7: Influenza-like illness surveillance among sentinel chinese medicine practitioners, 2009-11**  
**圖七: 中醫師的疑似流感監測, 2009-11**



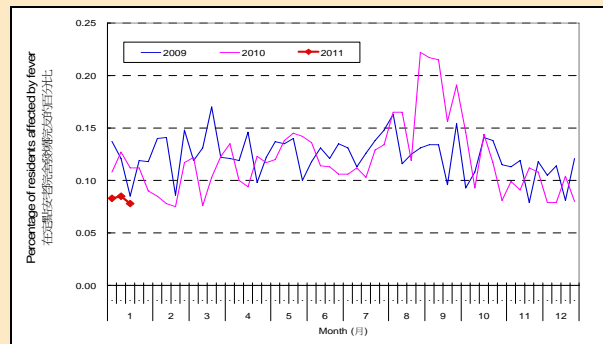
In week 3, the average consultation rate for ILI among Chinese Medicine Practitioners was 1.31 ILI cases per 1,000 consultations (Figure 7).  
 在第 3 週, 定點中醫師呈報的疑似流感個案平均數為 1.31 宗 (每千個診症計) (圖七)。

**Figure 4: Influenza-like illness outbreak monitoring, 2010-11**  
**圖四: 流感樣爆發監測, 2010-11**



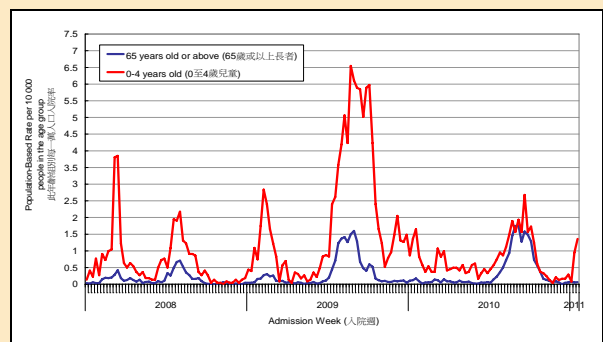
In week 3, 18 ILI outbreaks occurring in schools/ institutions were recorded (Figure 4). In the first 4 days of week 4 (January 16 to 19, 2011), 25 ILI outbreak occurring in schools/ institutions were recorded.  
 在第 3 週, 本中心錄得 18 宗在學校/院舍發生的流感樣爆發的報告 (圖四)。第 4 週的首 4 天 (2011 年 1 月 16 日至 19 日) 有 25 宗學校/院舍發生的流感樣爆發的報告。

**Figure 6: Fever surveillance at sentinel residential care homes for the elderly, 2009-11**  
**圖六: 定點安老院舍的發燒監測, 2009-11**



In week 3, 0.08% of residents in the sentinel residential care homes for the elderly had fever (Figure 6).  
 在第 3 週, 0.08% 定點安老院舍的院友出現發燒徵狀 (圖六)。

**Figure 8: Hospital admission rates with principal diagnosis of influenza, 2008-11**  
**圖八: 主要診斷為流感的病人入院率, 2008-11**



In week 3, hospital admission rates due to influenza for children aged 0 - 4 years and elderly aged 65 years or above were 1.36 and 0.07 cases respectively (per 10,000 people in the age group) (Figure 8).  
 在 3 週, 0-4 歲小童及 65 歲或以上人士因流感而入院的比率分別為 1.36 和 0.07 宗 (該年齡組別每一萬人口) (圖八)。

## Surveillance of severe paediatric influenza-associated complication/death

### 兒童流感相關之嚴重併發症／死亡個案的監測

- In week 3, there was no new report of severe paediatric influenza-associated complication/death. In the first 4 days of week 4 (January 16 to 19, 2011), one case of severe paediatric influenza-associated complication involving a 2-year-old girl was reported. Her nasopharyngeal aspirate specimen was tested positive for influenza A(H1N1)2009. She is now in critical condition.

第3週沒有新的兒童流感相關之嚴重併發症／死亡個案的報告。第4週的首4天（2011年1月16日至19日）有1宗兒童流感相關之嚴重併發症的報告，涉及一名兩歲大女童。她的鼻咽分泌樣本對甲型（H1N1）2009流感呈陽性反應。她現時情況危殆。

Note: The data reported are provisional figures and subject to further revision.  
註：現時報告的是臨時數據，可能會因資料的更新而作出修訂。

## Global Situation of Influenza Activity

### 世界各地的流感流行情況

- In the United States (week ending January 8, 2011), ILI consultation rates have decreased slightly compared to the previous week. It is unlikely that influenza activity for this season has peaked as activity generally peaks in January or later in most years..  
美國的流感樣病例求診率較上週輕微下降，但預料流感活躍程度仍未到達高峰，因流感活躍在過去年份多在一月或以後才到達高峰（截至2011年1月8日的一週）。
- In Canada (week ending January 8, 2011), the overall influenza activity has increased across the country.  
加拿大全國的流感活躍程度上升（截至2011年1月8日的一週）。
- In Singapore (week ending January 15, 2011), it was reported that influenza activity during the past four weeks remained low, there were some signs of a rise in influenza activity.  
新加坡的報告顯示流感活躍程度在過去四週保持在低水平，但有上升的跡象（截至2011年1月15日的一週）。
- In Europe (week ending January 9, 2011), influenza activity has increased, particularly in countries of Northern and Western Europe.  
歐洲的流感活躍程度正在上升，其中北歐和西歐國家的上升程度尤為顯著（截至2011年1月9日的一週）。
- In the United Kingdom (as of January 13, 2011), influenza activity remained above baseline levels but increased sharply in Northern Ireland. From September 6, 2010 until January 12, 2011, a total of 112 fatal cases have been verified by UK's Health Protection Agency as related to influenza infection, mostly due to influenza A (H1N1) 2009. The majority of death cases did not receive the influenza vaccine.  
英國的流感活躍程度保持在基線水平以上，而北愛爾蘭的流感活躍程度更大幅上升（截至2011年1月13日）。自2010年9月6日的一週至2011年1月12日，英國衛生防護局確認112宗與流感感染有關的死亡個案，主要是由甲型流感（H1N1）2009病毒引致，大部份死亡個案並沒有接種流感疫苗。

#### Sources (資料來源):

United States (美國): <http://www.cdc.gov/flu/weekly/>  
Canada (加拿大): [http://www.phac-aspc.gc.ca/fluwatch/10-11/w52\\_10/index-eng.php](http://www.phac-aspc.gc.ca/fluwatch/10-11/w52_10/index-eng.php)  
Singapore (新加坡): <http://www.moh.gov.sg/mohcorp/statisticsweeklybulletins.aspx>  
Europe (歐洲): <http://www.euroflu.org/index.php>  
United Kingdom (英國): [http://www.hpa.org.uk/web/HPAwebFile/HPAweb\\_C/1287148330414](http://www.hpa.org.uk/web/HPAwebFile/HPAweb_C/1287148330414)