

Flu Express

流感速遞



Flu Express is a weekly report produced by the Respiratory Disease Office of the Centre for Health Protection. It monitors and summaries the latest local and global influenza activities.

流感速遞是由衛生防護中心呼吸疾病辦事處每星期出版有關監測本地及世界各地的流行性感冒流行情況的總結報告。

Human Swine Influenza had been removed from the list of statutorily notifiable infectious diseases under the Prevention and Control of Disease Ordinance (Cap. 599) since October 8, 2010. This report summarized the influenza surveillance data for week 49 (November 28 to December 4, 2010).

由 2010 年 10 月 8 日起，人類豬型流感已從《預防及控制疾病條例》(第 599 章)的法定須呈報傳染病名單中剔除。本報告總結了第 49 週 (2010 年 11 月 28 日至 12 月 4 日) 的流感監測數據。

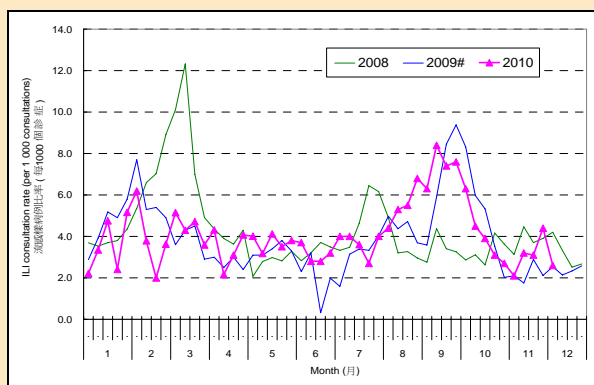
Local Situation of Influenza Activity (as of December 8, 2010)

本地流感流行情況 (截至2010年12月8日)

- The latest surveillance data showed that the overall influenza activity remains at the baseline level. 最新的監測數據顯示整體流感活躍程度保持在基線水平。
- The 59 years old lady confirmed to have H5N1 avian influenza infection on 17 November 2010 is now in stable condition under the management of Princess Margaret Hospital. So far, no secondary spread or further case of avian influenza was detected. This case was classified as an imported sporadic infection. 在 2010 年 11 月 17 日確診感染 H5N1 禽流感的 59 歲女士現時仍在瑪嘉烈醫院治理，情況穩定。目前並無發現有第二重感染，亦再無其他人類禽流感個案出現。這宗個案被界定為外地傳入的偶發性感染。
- The Government has lowered the influenza response level under the Framework of Government's Preparedness Plan for Influenza Pandemic from "Serious" Response Level to "Alert" Response Level on December 8. 政府已於 12 月 8 日把「流感大流行應變計劃」的架構下的應變級別由「嚴重」調低至「戒備」。

Figure 1: Influenza-like illness surveillance among sentinel general outpatient clinics[#], 2008-10

圖一：定點普通科診所的流感樣病例監測[#], 2008-10

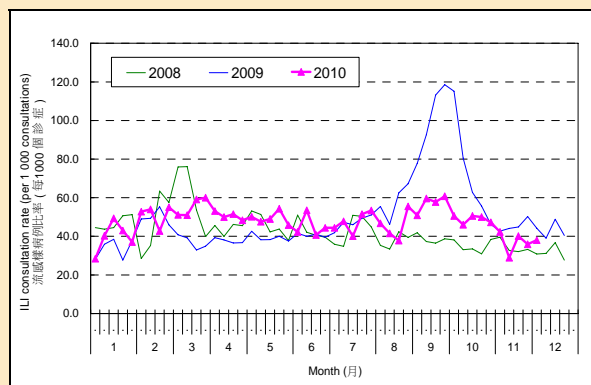


In week 49, the average consultation rate for influenza-like illness (ILI) among sentinel general outpatient clinics (GOPCs) was 2.6 ILI cases per 1,000 consultations (Figure 1).

在第 49 週，定點普通科診所呈報的流感樣病例個案平均數為 2.6 宗 (每千個診症計) (圖一)。

Figure 2: Influenza-like illness surveillance among sentinel private doctors, 2008-10

圖二：定點私家醫生的流感樣病例監測, 2008-10



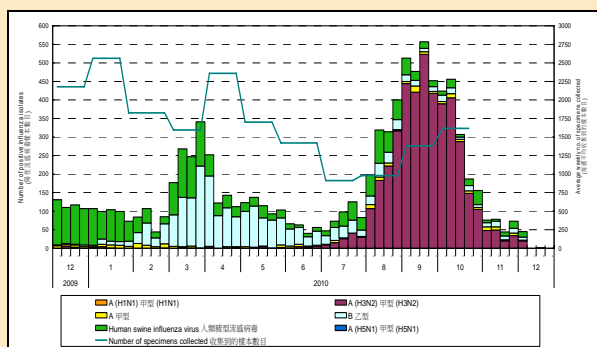
In week 49, the average consultation rate for ILI among sentinel private doctors was 38.0 ILI cases per 1,000 consultations (Figure 2).

在第 49 週，定點私家醫生呈報的流感樣病例個案平均數為 38.0 宗 (每千個診症計) (圖二)。

[#] During the operation of the 8 Designated Flu Clinics (DFCs) from week 25 of 2009 to week 21 of 2010, statistics from the eight DFCs were not included in the ILI surveillance among sentinel GOPCs.

在八間指定流感診所運作期間(由 2009 年的第 25 週至 2010 年的第 21 週)，定點普通科診所的流感樣病例監測沒有包括八間指定流感診所的統計數字。

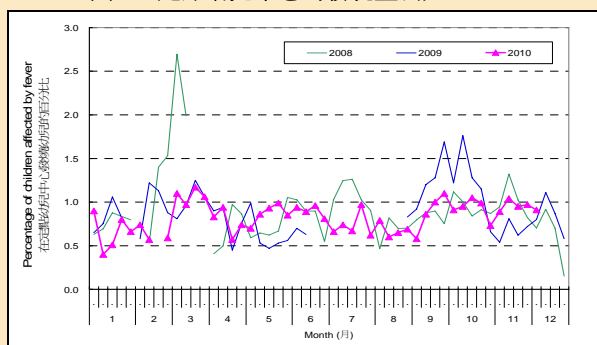
Figure 3: Influenza virus detections (Laboratory surveillance), 2009-10
圖三：流行性感冒病毒化驗數目 (實驗室監測), 2009-10



The number of influenza viruses detected in the Public Health Laboratory Centre in week 49 was 45, including 20 influenza A (H3) viruses, 15 human swine influenza viruses, 8 influenza B viruses and 2 influenza A viruses (Figure 3).

在第 49 週，公共衛生檢測中心共檢測到 45 個流行性感冒病毒的樣本，當中包括 20 個甲型(H3)流感病毒樣本、15 個人類豬型流感病毒樣本、8 個乙型流行性感冒病毒樣本及 2 個甲型流感病毒樣本 (圖三)。

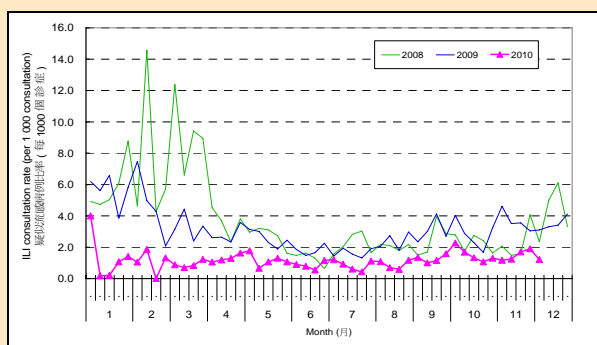
Figure 5: Fever surveillance at sentinel child care centres, 2008-10
圖五：定點幼兒中心的發燒監測, 2008-10



In week 49, 0.91% of children in the sentinel child care centres had fever (Figure 5).

在第 49 週，0.91% 定點幼兒中心的幼兒出現發燒徵狀 (圖五)。

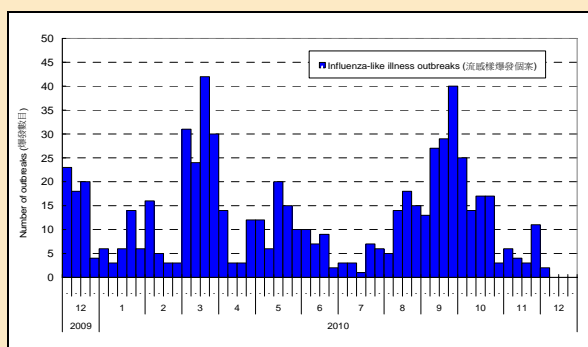
Figure 7: Influenza-like illness surveillance among sentinel Chinese medicine practitioners, 2008-10
圖七：中醫師的疑似流感監測, 2008-10



In week 49, the average consultation rate for ILI among Chinese Medicine Practitioners was 1.21 ILI cases per 1,000 consultations (Figure 7).

在第 49 週，定點中醫師呈報的疑似流感個案平均數為 1.21 宗 (每千個診症計) (圖七)。

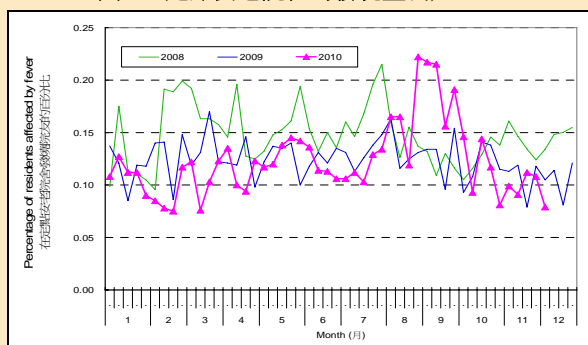
Figure 4: Influenza-like illness outbreak monitoring, 2009-10
圖四：流感樣爆發監測, 2009-10



In week 49, 2 ILI outbreaks occurring in schools/ institutions were recorded (Figure 4). In the first 4 days of week 50 (December 5 to 8, 2010), 1 ILI outbreak occurring in schools/ institutions was recorded.

在第 49 週，本中心錄得 2 宗在學校／院舍發生的流感樣爆發的報告 (圖四)。第 50 週的首 4 天 (2010 年 12 月 5 日至 8 日) 有 1 宗在學校／院舍發生的流感樣爆發的報告。

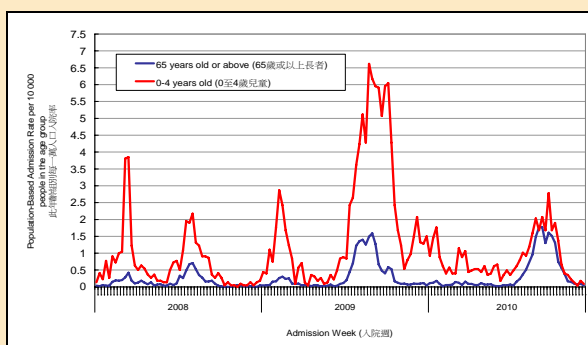
Figure 6: Fever surveillance at sentinel residential care homes for the elderly, 2008-10
圖六：定點安老院舍的發燒監測, 2008-10



In week 49, 0.08% of residents in the sentinel residential care homes for the elderly had fever (Figure 6).

在第 49 週，0.08% 定點安老院舍的院友出現發燒徵狀 (圖六)。

Figure 8: Hospital admission rates with principal diagnosis of influenza, 2008-10
圖八：主要診斷為流感的病人入院率, 2008-10



In week 49, hospital admission rate due to influenza for children aged 0 - 4 years and elderly aged 65 years or above was 0.09 and 0.04 cases respectively (per 10,000 people in the age group) (Figure 8).

在第 49 週，0 - 4 歲小童及 65 歲或以上人士因流感而入院的比率分別為 0.09 和 0.04 宗 (該年齡組別每一萬人口) (圖八)。

Surveillance of severe paediatric influenza-associated complication/death

兒童流感相關之嚴重併發症／死亡個案的監測

- In week 49 and the first 4 days of week 50 (December 5 to 8, 2010), there was no new report of severe paediatric influenza-associated complication/death.
第49週及第50週的首4天 (2010年12月5日至8日) 均沒有新的兒童流感相關之嚴重併發症／死亡個案的報告。

Note: The data reported are provisional figures and subject to further revision.
註：現時報告的是臨時數據，可能會因資料的更新而作出修訂。

Global Situation of Influenza Activity

世界各地的流感流行情況

- In the United States (week ending November 27, 2010), influenza activity remained at low level but slightly increased in the Southeast.
美國的流感活躍程度保持在低水平，但在東南部有輕微上升 (截至2010年11月27日的一週)。
- In Canada (week ending November 27, 2010), influenza activity slightly increased in some regions but was still low.
加拿大的流感活躍程度在一些地區有輕微上升，但仍然處於低水平 (截至2010年11月27日的一週)。
- In Singapore (week ending December 4, 2010), the influenza activity was low and remained below the warning level.
新加坡的流感活躍程度處於低水平及保持在警戒水平以下 (截至2010年12月4日的一週)。
- In Europe (week ending November 28, 2010), influenza activity was low.
歐洲的流感活躍程度處於低水平 (截至2010年11月28日的一週)。

Sources (資料來源):

United States (美國): <http://www.cdc.gov/flu/weekly/>

Canada (加拿大): <http://www.phac-aspc.gc.ca/fluwatch/index-eng.php>

Singapore (新加坡): <http://www.moh.gov.sg/mohcorp/statisticsweeklybulletins.aspx>

Europe (歐洲): <http://www.euroflu.org/index.php>