

Flu Express

流感速遞

Flu Express is a weekly report produced by the Respiratory Disease Office of the Centre for Health Protection. It monitors and summarizes the latest local and global influenza activities.

流感速遞是由衛生防護中心呼吸疾病辦事處每星期出版有關監測本地及世界各地的流行性感冒流行情況的總結報告。

Local Situation of Influenza Activity (as of Jan 4, 2012)

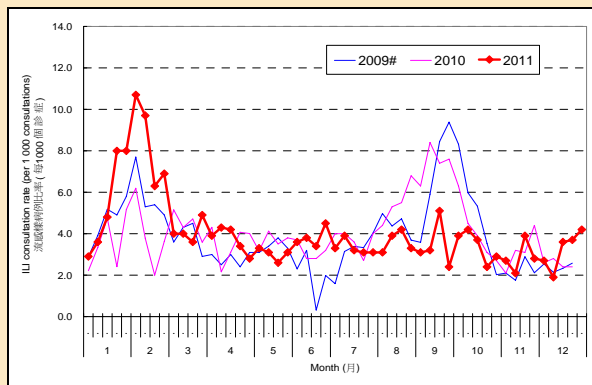
本地流感流行情況 (截至2012年1月4日)

Reporting period: Dec 25 – 31, 2011 (Week 53) 報告週期: 2011 年 12 月 25 至 31 日(第 53 週)

- The latest surveillance data showed that the overall influenza activity is increasing.
最新的監測數據顯示整體流感活躍程度正在上升。

Figure 1: Influenza-like illness surveillance among sentinel general outpatient clinics[#], 2009-11

圖一: 定點普通科診所的流感樣病例監測[#], 2009-11

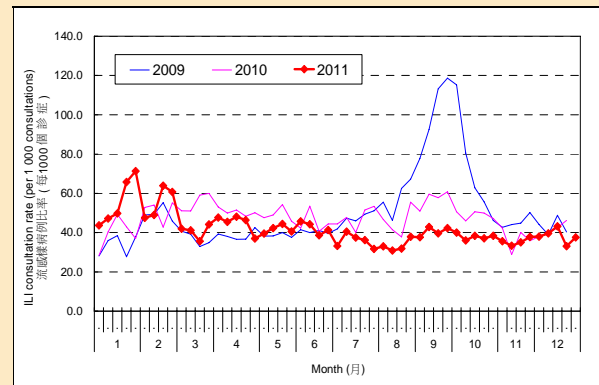


In week 53, the average consultation rate for influenza-like illness (ILI) among sentinel general outpatient clinics (GOPCs) was 4.2 ILI cases per 1,000 consultations (Figure 1).

在第 53 週, 定點普通科診所呈報的流感樣病例個案平均數為 4.2 宗 (每千個診症計) (圖一)。

Figure 2: Influenza-like illness surveillance among sentinel private doctors, 2009-11

圖二: 定點私家醫生的流感樣病例監測, 2009-11



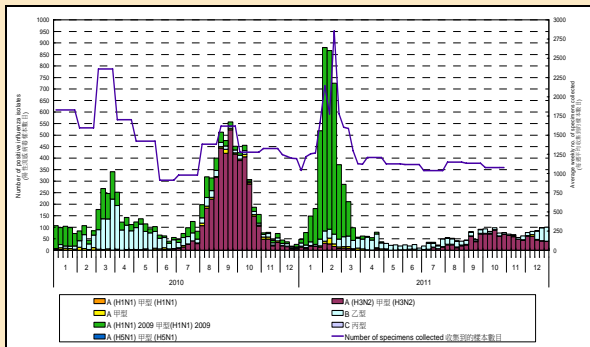
In week 53, the average consultation rate for ILI among sentinel private doctors was 37.6 ILI cases per 1,000 consultations (Figure 2).

在第 53 週, 定點私家醫生呈報的流感樣病例個案平均數為 37.6 宗 (每千個診症計) (圖二)。

[#] During the operation of the 8 Designated Flu Clinics (DFCs) from week 25 of 2009 to week 21 of 2010, data from the eight DFCs were not included in the ILI surveillance among sentinel GOPC.

在八間指定流感診所運作期間(由 2009 年的第 25 週至 2010 年的第 21 週), 定點普通科診所的流感樣病例監測沒有包括八間指定流感診所的數據。

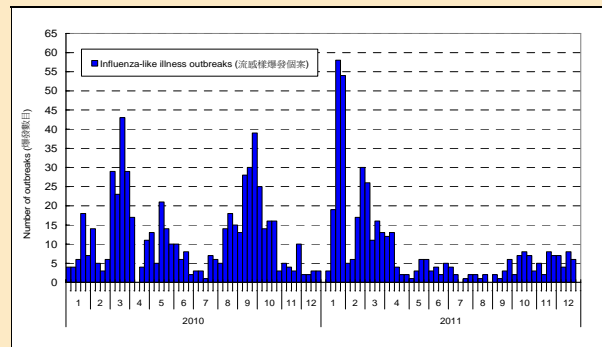
Figure 3: Influenza virus detections (Laboratory surveillance), 2010-11
圖三: 流行性感冒病毒化驗數目 (實驗室監測), 2010-11



In week 53, the number of influenza viruses detected in the Public Health Laboratory Centre was 100, including 60 influenza B viruses, 39 influenza A (H3) viruses and 1 influenza A virus (Figure 3).

在第 53 週, 公共衛生檢測中心共檢測到 100 個流行性感冒病毒的樣本, 當中包括 60 個乙型流感病毒樣本、39 個甲型(H3) 流感病毒樣本及 1 個甲型流感病毒樣本 (圖三)。

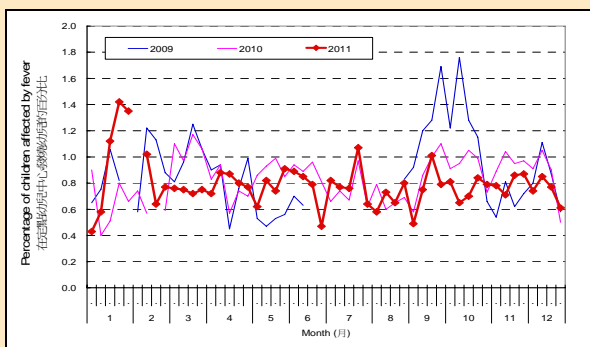
Figure 4: Influenza-like illness outbreak monitoring, 2010-11
圖四: 流感樣爆發監測, 2010-11



In week 53, no ILI outbreaks occurring in schools/ institutions were recorded (Figure 4). In the first 4 days of week 1 (Jan 1 to 4, 2012), no ILI outbreaks occurring in schools/ institutions were recorded.

在第 53 週, 本中心沒有錄得在學校/院舍發生的流感樣爆發的報告 (圖四)。第 1 週的首 4 天 (2012 年 1 月 1 至 4 日) 沒有在學校/院舍發生的流感樣爆發的報告。

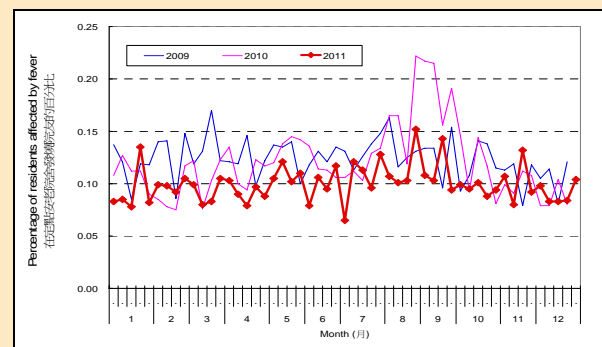
Figure 5: Fever surveillance at sentinel child care centres/ kindergartens, 2009-11
圖五: 定點幼兒園/幼稚園的發燒監測, 2009-11



In week 52, 0.61% of children in the sentinel child care centres/ kindergartens had fever (Figure 5). The surveillance in week 53 was suspended due to Christmas holiday.

在第 52 週, 0.61% 定點幼兒園/幼稚園的幼兒出現發燒徵狀 (圖五)。第 53 週的監測因聖誕節假期關係而暫停。

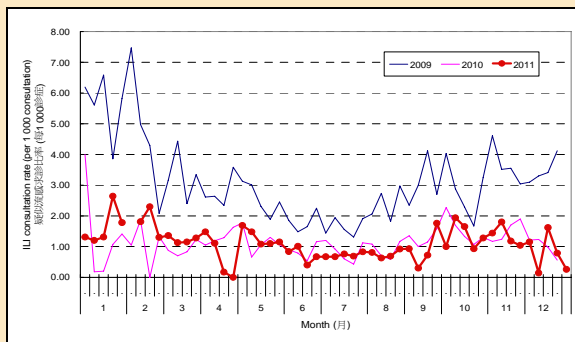
Figure 6: Fever surveillance at sentinel residential care homes for the elderly, 2009-11
圖六: 定點安老院舍的發燒監測, 2009-11



In week 53, 0.10% of residents in the sentinel residential care homes for the elderly had fever (Figure 6).

在第 53 週, 0.10% 定點安老院舍的院友出現發燒徵狀 (圖六)。

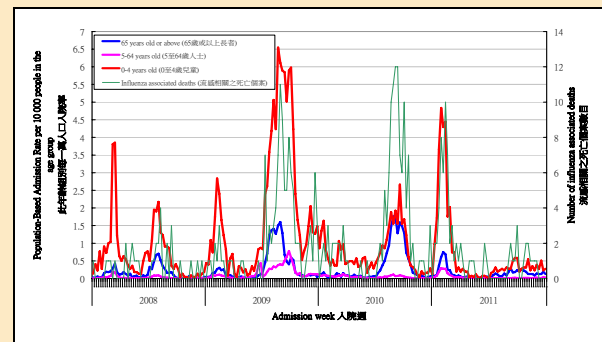
Figure 7: Influenza-like illness surveillance among sentinel Chinese medicine practitioners, 2009-11
圖七: 中醫師的疑似流感監測, 2009-11



In week 53, the average consultation rate for ILI among Chinese medicine practitioners was 0.26 ILI case per 1,000 consultations (Figure 7).

在第 53 週, 定點中醫師呈報的疑似流感個案平均數為 0.26 宗 (每千個診症計) (圖七)。

Figure 8: Influenza associated hospital admission rates and deaths based on discharge coding, 2008-11
圖八: 出院診斷為流感的人院率及死亡數字, 2008-11



In week 53, hospital admission rates with principal diagnosis of influenza for persons aged 0-4 years, 5-64 years and 65 years or above were 0.27, 0.03 and 0.13 case respectively (per 10,000 people in the age group) (Figure 8). Weekly number of deaths with any diagnosis of influenza in public hospitals is also shown in the figure above.

在第 53 週, 0-4 歲小童、5-64 歲人士及 65 歲或以上人士主要診斷為流感的人院率分別為 0.27, 0.03 和 0.13 宗 (該年齡組別每一萬人口計) (圖八)。上圖亦顯示在公立醫院任何出院診斷包括流感之死亡個案數字。

Surveillance of severe paediatric influenza-associated complication/death

兒童流感相關之嚴重併發症／死亡個案的監測

- In week 53 and the first 4 days of week 1 (Jan 1 to 4, 2012), there were no new reports of severe paediatric influenza-associated complication/death.
第53週及第1週的首4天(2012年1月1至4日)均沒有新的兒童流感相關之嚴重併發症／死亡個案的報告。

Note: The data reported are provisional figures and subject to further revision.
註：現時報告的是臨時數據，可能會因資料的更新而作出修訂。

Surveillance of Tamiflu resistant influenza A(H1N1)2009 virus infection

甲型(H1N1)2009流感病毒對特敏福呈抗藥性個案的監測

- In week 53 and the first 4 days of week 1 (Jan 1 to 4, 2012), there were no new reports of oseltamivir (Tamiflu) resistant influenza A(H1N1)2009 virus infection. There are totally 16 reports of resistance to Tamiflu in strains of influenza A(H1N1)2009 virus detected in Hong Kong since 2009.
第53週及第1週的首4天(2012年1月1至4日)均沒有新的甲型(H1N1)2009流感病毒對奧司他韋(特敏福)呈抗藥性個案。自2009年至今，本港共有16宗甲型(H1N1)2009流感病毒對特敏福出現抗藥性的個案。

Global Situation of Influenza Activity

世界各地的流感流行情況

- In the United States (week ending Dec 25, 2011), influenza activity continued to increase.
美國的流感活躍程度持續上升(截至2011年12月25日的一週)。
- In Canada (week ending Dec 24, 2011), the ILI consultation rate remained within expected levels for this time of year.
加拿大的流感樣病例求診率維持在每年這段時間的預期水平之內。(截至2011年12月24日的一週)。
- In the United Kingdom (week ending Dec 25, 2011), influenza activity remained low in England, Wales, Scotland and North Ireland.
在英國，英格蘭、威爾斯、蘇格蘭及北愛爾蘭的流感活躍程度維持在低水平(截至2011年12月25日的一週)。
- In Europe (week ending Dec 25, 2011), the ILI consultation rate was at low level in the region.
歐洲地區的流感樣病例求診率處於低水平(截至2011年12月25日的一週)。
- In Singapore (week ending Dec 24, 2011), it was reported that the number of consultations for acute respiratory infections was below the warning level.
新加坡的報告顯示急性呼吸道感染的求診個案數字處於警戒線之下(截至2011年12月24日的一週)。

Sources (資料來源):

United States (美國): <http://www.cdc.gov/flu/weekly/>

Canada (加拿大): <http://www.phac-aspc.gc.ca/fluwatch/index-eng.php>

United Kingdom (英國):

<http://www.hpa.org.uk/Topics/InfectiousDiseases/InfectionsAZ/SeasonalInfluenza/EpidemiologicalData/03influsweeklyreportpdfonly/>

Europe (歐洲): <http://www.euroflu.org/index.php>

Singapore (新加坡):

http://www.moh.gov.sg/content/moh_web/home/statistics/infectiousDiseasesStatistics/weekly_infectiousdiseasesbulletin.html