

FLU EXPRESS



Flu Express is a weekly report produced by the Respiratory Disease Office of the Centre for Health Protection. It monitors and summarizes the latest local and global influenza activities.

Local Situation of Influenza Activity (as of Mar 8, 2012)

Reporting period: Feb 26 – Mar 3, 2012 (Week 9)

- The latest surveillance data showed that the overall influenza activity had peaked in mid-February and there were early signs of decrease.
- The Centre for Health Protection has collaborated with the Hospital Authority and private hospitals to monitor influenza associated intensive care unit (ICU) admissions or deaths (aged 18 years or above) since Jan 13, 2012. As of Mar 7, there were 57 cases of influenza associated ICU admissions or deaths, in which 34 of them were fatal.
- As the winter influenza season is expected to last for a few more weeks, target groups are advised to make use of the last opportunity to receive influenza vaccinations.

Influenza-like-illness surveillance among sentinel general outpatient clinics, 2010-12

In week 9, the average consultation rate for influenza-like illness (ILI) among sentinel general outpatient clinics (GOPCs) was 6.4 ILI cases per 1,000 consultations (Figure 1).

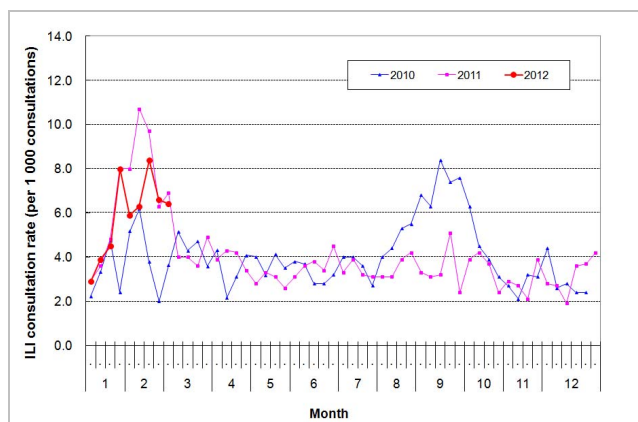


Figure 1 ILI consultation rate at sentinel GOPC, 2010-12

Influenza-like illness surveillance among sentinel private doctors, 2010-12

In week 9, the average consultation rate for ILI among sentinel private doctors was 50.2 ILI cases per 1,000 consultations (Figure 2).

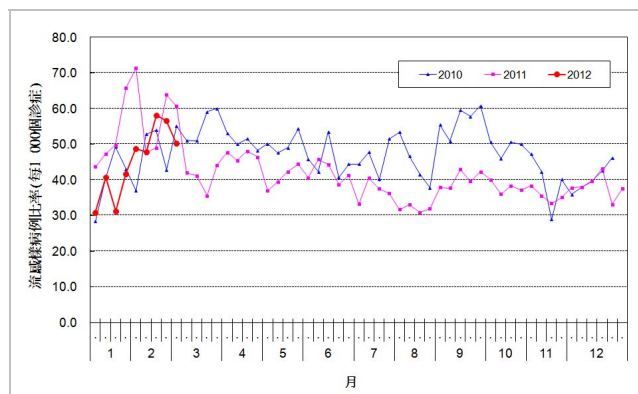


Figure 2 ILI consultation rate at sentinel GP, 2010-12

Influenza virus detections (Laboratory surveillance), 2011-12

In week 9, the number of influenza viruses detected in the Public Health Laboratory Centre was 426, including 332 influenza B viruses, 81 influenza A (H3) viruses, 11 influenza A(H1N1)2009 viruses and 2 influenza A viruses (Figure 3).

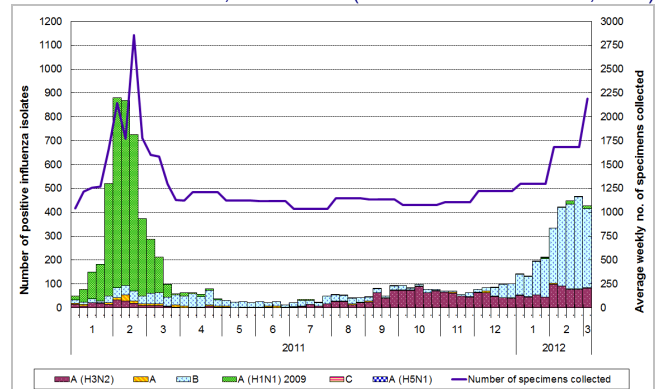


Figure 3 Influenza virus detections, 2011-12

Influenza-like illness outbreak monitoring, 2011-12

In week 9, 36 ILI outbreaks occurring in schools/institutions were recorded (Figure 4). In the first 4 days of week 10 (Mar 4 to 7, 2012), 23 ILI outbreaks occurring in schools/institutions were recorded.

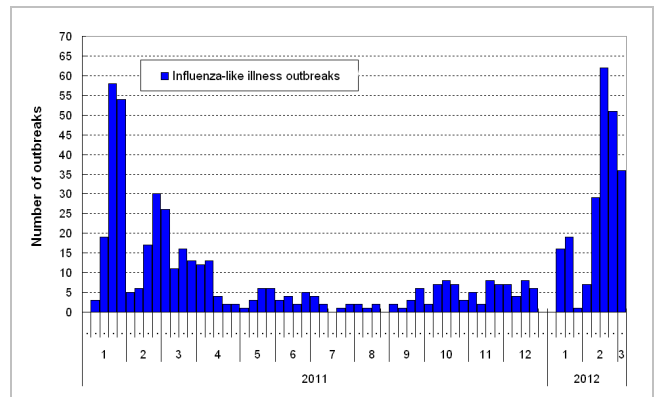


Figure 4 ILI outbreaks, 2011-12

Influenza associated hospital admission rates and deaths based on discharge coding, 2010-12

In week 9, hospital admission rates with principal diagnosis of influenza for persons aged 0-4 years, 5-64 years and 65 years or above were 1.79, 0.10 and 0.63 cases respectively (per 10,000 people in the age group) (Figure 5). Weekly number of deaths with any diagnosis of influenza in public hospitals is also shown on the right hand side.

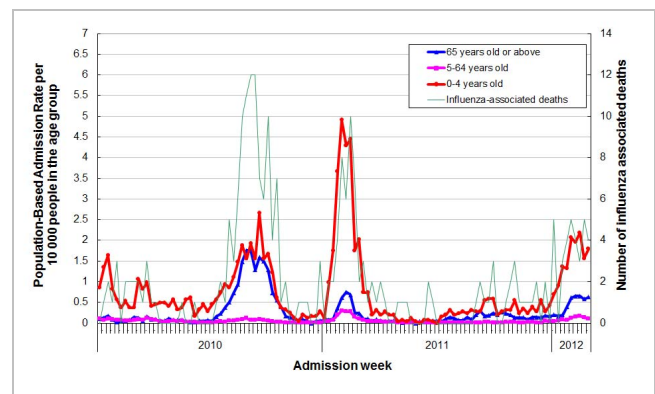


Figure 5 Influenza associated hospital admission rates and deaths, 2010-12

Fever surveillance at sentinel child care centres/ kindergartens, 2010-12

In week 9, 1.29% of children in the sentinel child care centres/ kindergartens had fever (Figure 6).

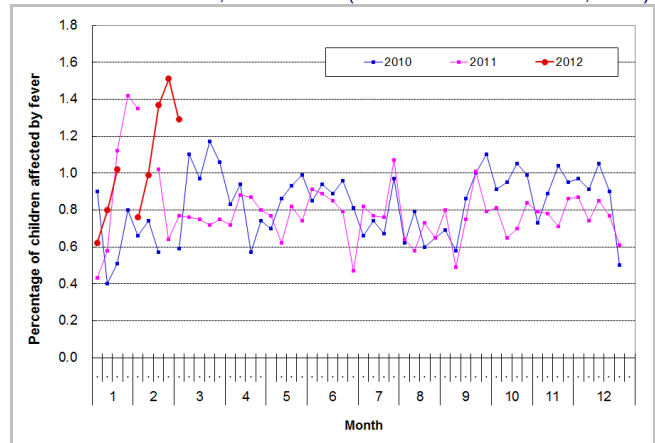


Figure 6 Percentage of children with fever at sentinel CCC/KG, 2010-12

Fever surveillance at sentinel residential care homes for the elderly, 2010-12

In week 9, 0.16% of residents in the sentinel residential care homes for the elderly had fever (Figure 7).

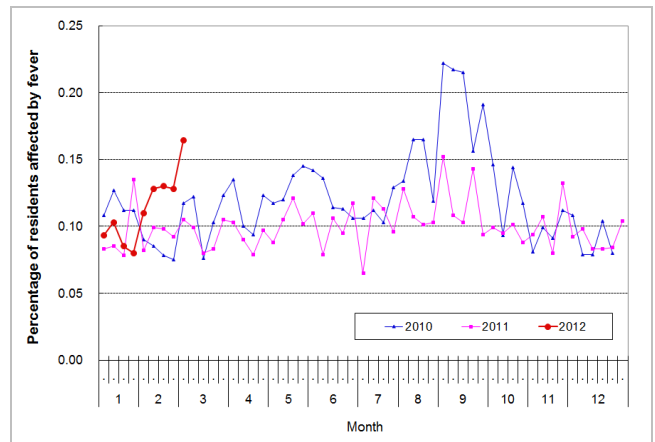


Figure 7 Percentage of residents with fever at sentinel RCHE, 2010-12

Influenza-like illness surveillance among sentinel Chinese medicine practitioners, 2010-12

In week 9, the average consultation rate for ILI among Chinese medicine practitioners was 1.99 ILI cases per 1,000 consultations (Figure 8).

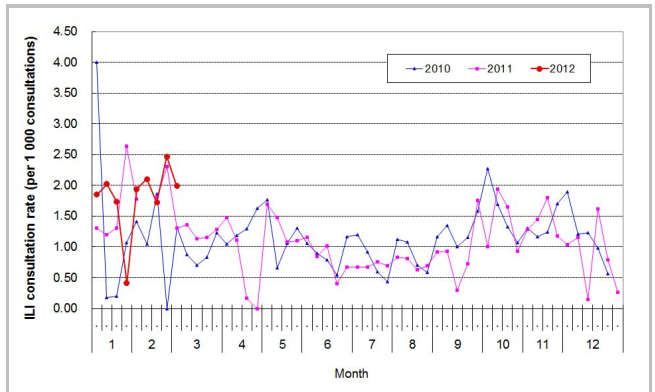


Figure 8 ILI consultation rate at sentinel CMP, 2010-12

Enhanced Surveillance for Severe Seasonal Influenza (Aged 18 years or above)

- From Feb 29, 2012, 12:00 noon to Mar 7, 2012, 12:00 noon, 8 cases of influenza associated ICU admissions or deaths were recorded, in which 4 of them were fatal.

Note: The data reported are provisional figures and subject to further revision.

Surveillance of severe paediatric influenza-associated complication/death (Aged above one month and below 18 years)

- In week 9, there were no new reports of severe paediatric influenza-associated complication/death. In the first 4 days of week 10 (Mar 4 to 7, 2012), one case of severe paediatric influenza-associated complication involving a girl aged 6 years old who had developed severe pneumonia was reported. She is now in stable condition. Her nasopharyngeal aspirate specimen was tested positive for influenza B.

Note: The data reported are provisional figures and subject to further revision.

Surveillance of Tamiflu resistant influenza A(H1N1)2009 virus infection

- In week 9 and the first 4 days of week 10 (Mar 4 to 7, 2012), there were no new reports of oseltamivir (Tamiflu) resistant influenza A(H1N1)2009 virus infection. There are totally 17 reports of resistance to Tamiflu in strains of influenza A(H1N1)2009 virus detected in Hong Kong since 2009.

Global Situation of Influenza Activity

- In the United States (week ending Feb 25, 2012), influenza activity increased slightly but remained relatively low. The most common type of influenza detected among positive specimens was influenza A(H3N2) virus.
- In Canada (week ending Feb 25, 2012), the ILI consultation rate slightly decreased this week compared to the previous week and remained within expected level for this time of year.
- In the United Kingdom (week ending Feb 26, 2012), the weekly influenza consultation rates in England, Wales, Scotland and Northern Ireland remained low.
- In Europe (as of Feb 26, 2012), influenza activity was increasing in 18 countries while the ILI consultation rate had peaked and were decreasing in some countries such as Albania, Bulgaria, Italy and Spain.
- In Singapore (week ending Mar 3, 2012), the number of consultations for acute respiratory infections was below the warning level.

Sources:

Information have been extracted from the following sources when updates are available: [United States Centers for Disease Control and Prevention](#), [Public Health Agency of Canada](#), [United Kingdom Health Protection Agency](#), [World Health Organization/Europe Euroflu](#) and [Singapore Ministry of Health](#).