

FLU EXPRESS

Flu Express is a weekly report produced by the Respiratory Disease Office of the Centre for Health Protection. It monitors and summarizes the latest local and global influenza activities.

Local Situation of Influenza Activity (as of Oct 16, 2013)

Reporting period: Oct 6 – 12, 2013 (Week 41)

- The latest surveillance data showed that the local influenza activity remained elevated.
- The Centre for Health Protection has collaborated with the Hospital Authority and private hospitals to monitor influenza associated intensive care unit (ICU) admissions or deaths (aged 18 years or above) since Jul 26, 2013. As of Oct 16, there were 51 cases of influenza associated ICU admission or death, in which 31 of them were fatal.
- Influenza can cause serious illnesses in high-risk individuals and even healthy persons. Except for those with contraindications, influenza vaccination is suitable for all members of the public.
- Children (aged between six months and less than 6 years, or attending a kindergarten or child care centre in Hong Kong) and elderly (aged 65 years or above), who are eligible, will be subsidised for seasonal influenza vaccination from enrolled private doctors participating in the Government's vaccination subsidy schemes starting from Oct 2, 2013.

Influenza-like-illness surveillance among sentinel general outpatient clinics, 2011-13

In week 41, the average consultation rate for influenza-like illness (ILI) among sentinel general outpatient clinics (GOPCs) was 2.8 ILI cases per 1,000 consultations (Figure 1).

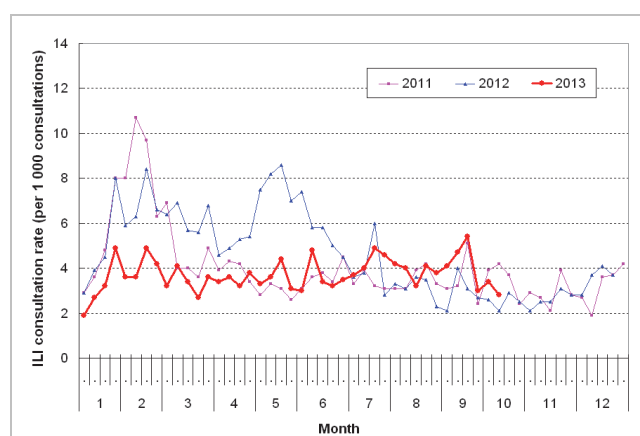


Figure 1 ILI consultation rate at sentinel GOPC, 2011-13

Influenza-like illness surveillance among sentinel private doctors, 2011-13

In week 41, the average consultation rate for ILI among sentinel private doctors was 41.2 ILI cases per 1,000 consultations (Figure 2).

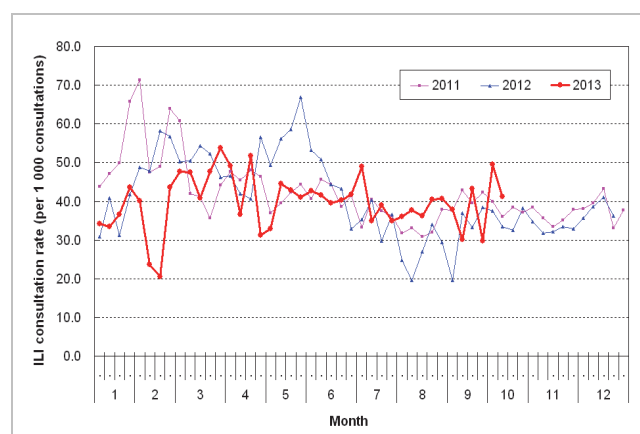


Figure 2 ILI consultation rate at sentinel GP, 2011-13

Influenza virus detections (Laboratory surveillance), 2012-13

In week 41, the number of influenza viruses detected in the Public Health Laboratory Centre was 162, including 136 influenza A (H3) viruses, 23 influenza B viruses and 3 influenza A (H1N1)pdm09 viruses (Figure 3).

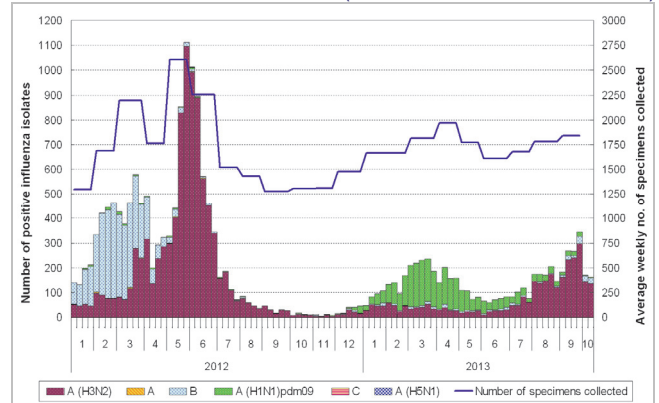


Figure 3 Influenza virus detections, 2012-13

Influenza-like illness outbreak monitoring, 2012-13

In week 41, 7 ILI outbreaks occurring in schools/institutions were recorded. In the first 4 days of week 42 (Oct 13 to 16, 2013), no ILI outbreaks occurring in schools/institutions were recorded (Figure 4).

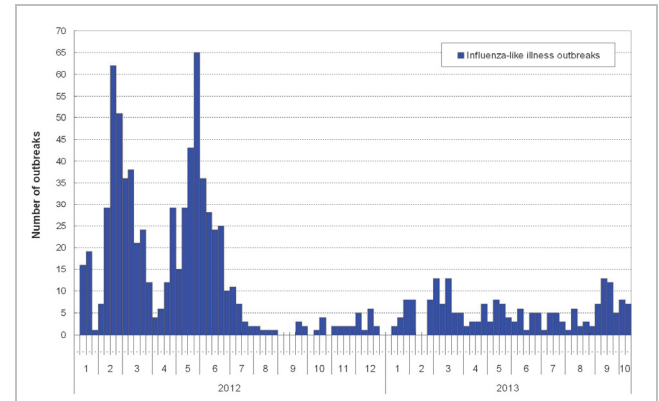


Figure 4 ILI outbreaks, 2012-13

Rate of influenza-like illness syndrome group in accident and emergency departments, 2011-13[#]

In week 41, the rate of the influenza-like illness syndrome group in the accident and emergency departments (AED) was 152.6 (per 1,000 coded cases) (Figure 5).

[#]Note: The influenza-like illness syndrome group includes codes such as influenza, upper respiratory tract infection, fever, cough, throat pain, and pneumonia.

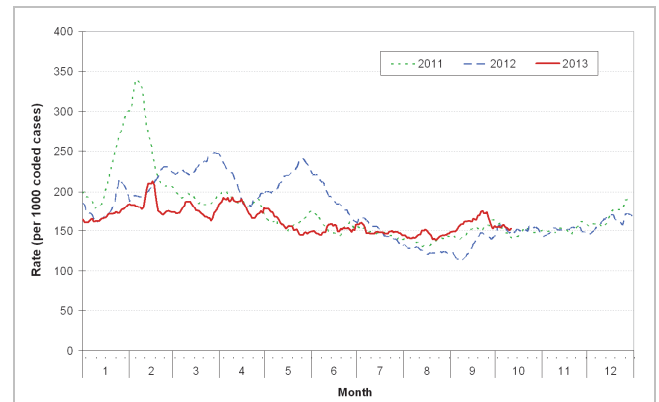


Figure 5 Rate of ILI syndrome group in AED, 2011-13

Influenza associated hospital admission rates and deaths based on discharge coding, 2011-13

In week 41, hospital admission rates with principal diagnosis of influenza for persons aged 0-4 years, 5-64 years and 65 years or above were 1.04, 0.03 and 0.19 cases respectively (per 10,000 people in the age group) (Figure 6). Weekly number of deaths with any diagnosis of influenza in public hospitals is also shown in the figure on the right hand side.

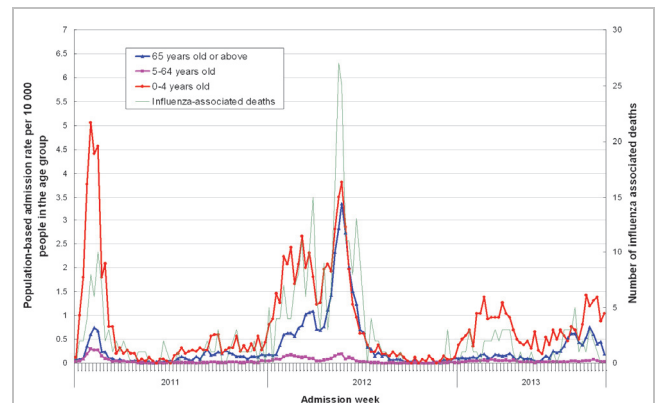


Figure 6 Influenza associated hospital admission rates and deaths, 2011-13

Fever surveillance at sentinel child care centres/ kindergartens, 2011-13

In week 41, 0.85% of children in the sentinel child care centres / kindergartens (CCC/ KG) had fever (Figure 7).

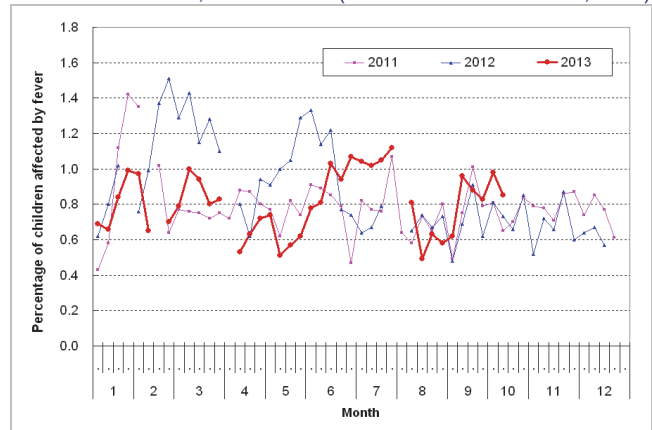


Figure 7 Percentage of children with fever at sentinel CCC/ KG, 2011-13

Fever surveillance at sentinel residential care homes for the elderly, 2011-13

In week 41, 0.12% of residents in the sentinel residential care homes for the elderly (RCHEs) had fever (Figure 8).

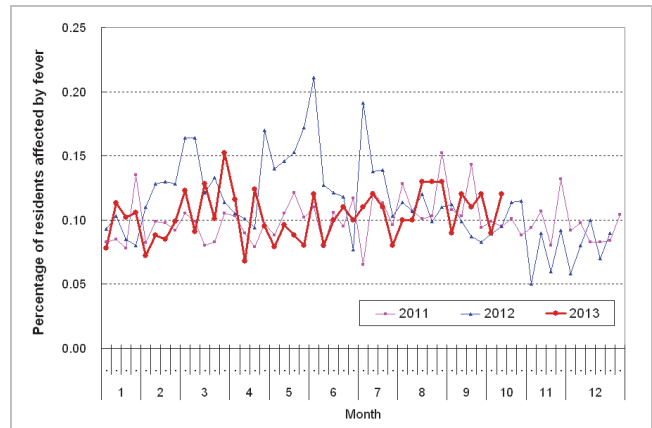


Figure 8 Percentage of residents with fever at sentinel RCHE, 2011-13

Influenza-like illness surveillance among sentinel Chinese medicine practitioners, 2011-13

In week 41, the average consultation rate for ILI among Chinese medicine practitioners (CMPs) was 1.77 ILI cases per 1,000 consultations (Figure 9).

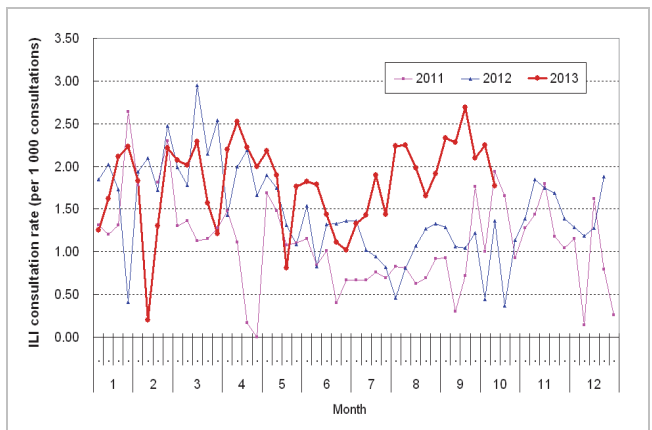


Figure 9 ILI consultation rate at sentinel CMP, 2011-13

Enhanced Surveillance for Severe Seasonal Influenza (Aged 18 years or above)

- From Oct 9, 2013, 12:00 noon to Oct 16, 2013, 12:00 noon, no cases of influenza associated ICU admission/death were recorded.

Note: The data reported are provisional figures and subject to further revision.

Surveillance of severe paediatric influenza-associated complication/death (Aged above one month and below 18 years)

- In week 41, one case of severe paediatric influenza-associated complication involving a 18-month-old boy who had developed severe pneumonia was reported. He is now in stable condition. His nasopharyngeal aspirate tested positive for influenza A (H3N2) virus. In the first 4 days of week 42 (Oct 13 to 16, 2013), there were no new reports of severe paediatric influenza-associated complication/death.

Note: The data reported are provisional figures and subject to further revision.

Surveillance of Tamiflu resistant influenza A(H1N1)2009 virus infection

- In week 41 and the first 4 days of week 42 (Oct 13 to 16, 2013), there were no new reports of oseltamivir (Tamiflu) resistant influenza A(H1N1)pdm09 virus infection. There are totally 37 reports of Tamiflu resistant influenza A(H1N1)pdm09 virus detected in Hong Kong since 2009.

Global Situation of Influenza Activity

- In Canada (week ending Oct 5, 2013), the influenza activity remained low.
- In the United Kingdom (week ending Oct 6, 2013), the ILI consultation rate remained low.
- In Europe (week ending Oct 6, 2013), the ILI consultation rates were at low levels in all countries in the Region.
- In New Zealand (week ending Oct 6, 2013), the ILI consultation rate was below the baseline.
- In Australia (week ending Sep 27, 2013), nationally the 2013 influenza season appeared to have peaked at the end of August. Overall influenza activity had been relatively low compared to recent seasons.
- In Singapore (week ending Oct 12, 2013), the number of consultations for acute respiratory infections was below the warning level.

Sources:

Information have been extracted from the following sources when updates are available: [Public Health Agency of Canada](#), [United Kingdom Health Protection Agency](#), [World Health Organization/Europe Euroflu](#), [New Zealand Ministry of Health](#), [Australia Department of Health and Ageing](#).and [Singapore Ministry of Health](#)