

FLU EXPRESS

Flu Express is a weekly report produced by the Respiratory Disease Office of the Centre for Health Protection. It monitors and summarizes the latest local and global influenza activities.

Local Situation of Influenza Activity (as of Dec 26, 2013)

Reporting period: Dec 15 – 21, 2013 (Week 51)

- The latest surveillance data showed that the local influenza activity was at baseline level.
- Influenza can cause serious illnesses in high-risk individuals and even healthy persons. Except for those with contraindications, influenza vaccination is suitable for all members of the public.
- Children (aged between six months and less than 6 years, or attending a kindergarten or child care centre in Hong Kong) and elderly (aged 65 years or above), who are eligible, can be subsidised for seasonal influenza vaccination from enrolled private doctors participating in the Government's vaccination subsidy schemes starting from Oct 2, 2013.

Influenza-like-illness surveillance among sentinel general outpatient clinics, 2011-13

In week 51, the average consultation rate for influenza-like illness (ILI) among sentinel general outpatient clinics (GOPCs) was 3.7 ILI cases per 1,000 consultations (Figure 1).

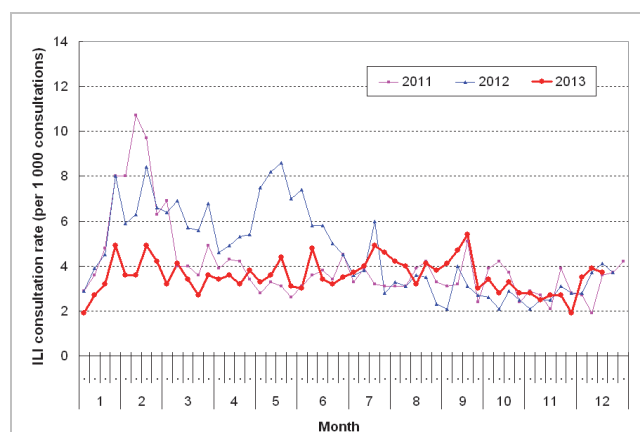


Figure 1 ILI consultation rate at sentinel GOPC, 2011-13

Influenza-like illness surveillance among sentinel private doctors, 2011-13

In week 51, the average consultation rate for ILI among sentinel private doctors was 36.4 ILI cases per 1,000 consultations (Figure 2).

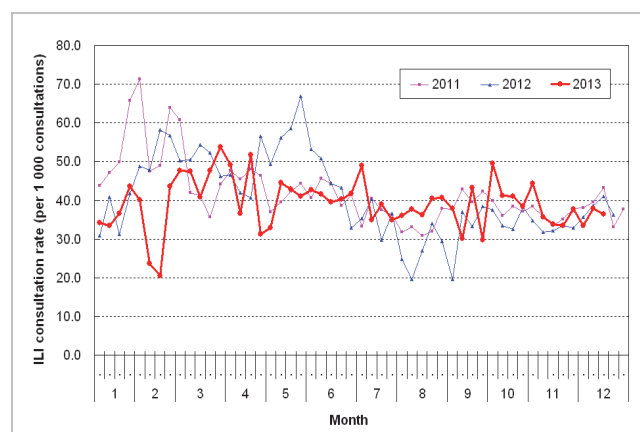


Figure 2 ILI consultation rate at sentinel GP, 2011-13

Influenza virus detections (Laboratory surveillance), 2012-13

In week 51 (Dec 15 to 21, 2013), the number of influenza viruses detected in the Public Health Laboratory Services Branch was 136, including 51 influenza A(H3) viruses, 49 influenza B viruses and 36 influenza A(H1N1)pdm09 viruses (Figure 3).

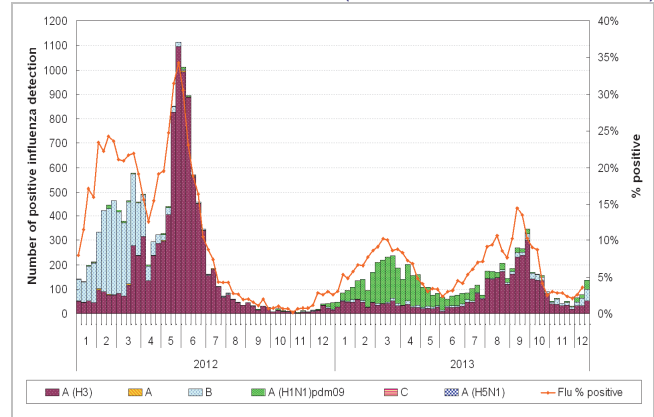


Figure 3 Influenza virus detections, 2012-13

Percent positive for influenza viruses, 2012-13

For the respiratory specimens received between Dec 9 to 15, 2013, 3.6% were tested positive for influenza viruses, including 0.7% influenza A(H1N1)pdm09, 1.0% influenza A(H3) and 1.9% influenza B (Figure 4).

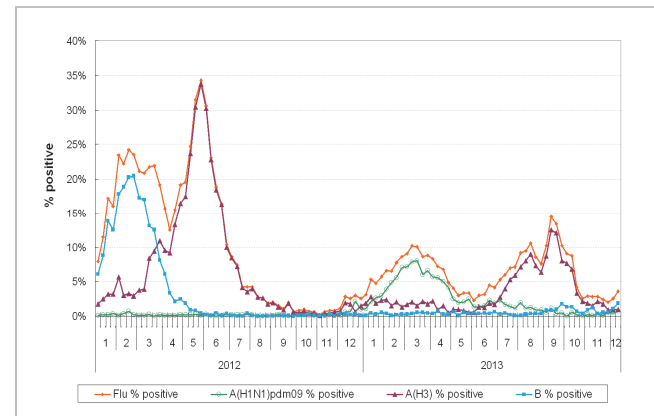


Figure 4 Percent positive for influenza viruses, 2012-13

Influenza-like illness outbreak monitoring, 2012-13

In week 51, 2 ILI outbreaks occurring in schools/institutions were recorded. In the first 5 days of week 52 (Dec 22 to 26, 2013), no ILI outbreaks occurring in schools/institutions were recorded (Figure 5).

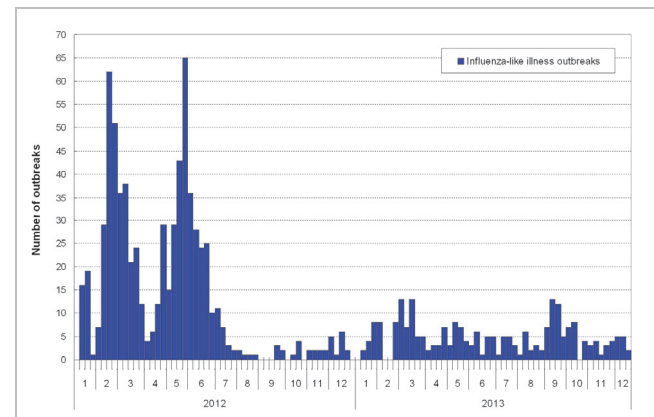


Figure 5 ILI outbreaks, 2012-13

Rate of influenza-like illness syndrome group in accident and emergency departments, 2011-13[#]

In week 51, the rate of the influenza-like illness syndrome group in the accident and emergency departments (AED) was 161.3 (per 1,000 coded cases) (Figure 6).

[#]Note: The influenza-like illness syndrome group includes codes such as influenza, upper respiratory tract infection, fever, cough, throat pain, and pneumonia.

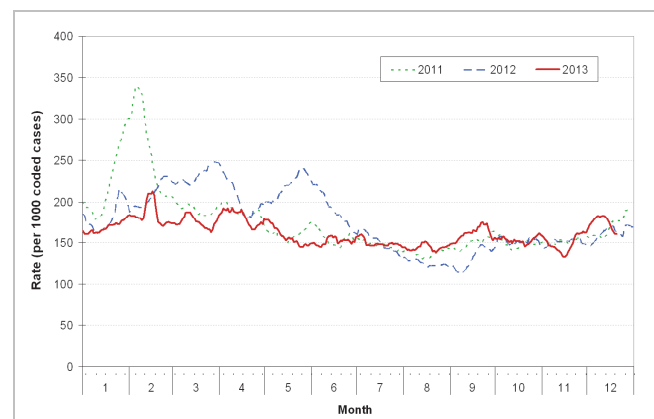


Figure 6 Rate of ILI syndrome group in AED, 2011-13

Influenza associated hospital admission rates and deaths based on discharge coding, 2011-13

In week 51, hospital admission rates with principal diagnosis of influenza for persons aged 0-4 years, 5-64 years and 65 years or above were 0.39, 0.03 and 0.11 cases respectively (per 10,000 people in the age group) (Figure 7). Weekly number of deaths with any diagnosis of influenza in public hospitals is also shown in the figure on the right hand side.

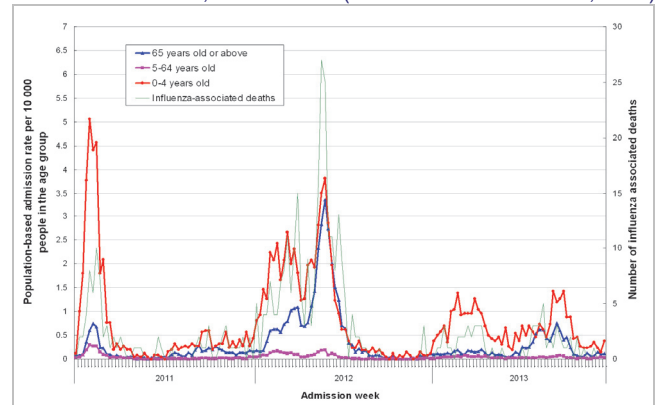


Figure 7 Influenza associated hospital admission rates and deaths, 2011-13

Fever surveillance at sentinel child care centres/ kindergartens, 2011-13

In week 51, 0.66% of children in the sentinel child care centres / kindergartens (CCC/ KG) had fever (Figure 8).

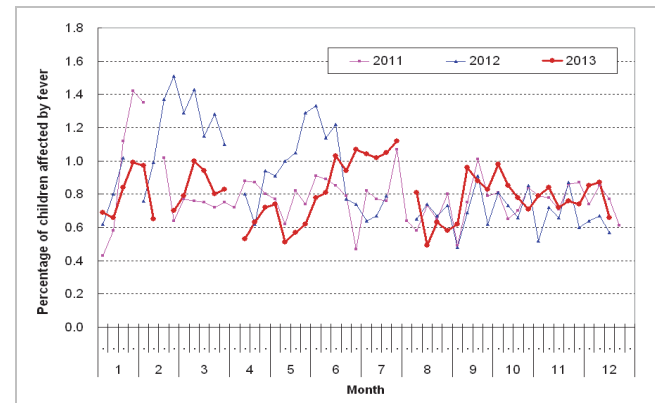


Figure 8 Percentage of children with fever at sentinel CCC/ KG, 2011-13

Fever surveillance at sentinel residential care homes for the elderly, 2011-13

In week 51, 0.07% of residents in the sentinel residential care homes for the elderly (RCHEs) had fever (Figure 9).

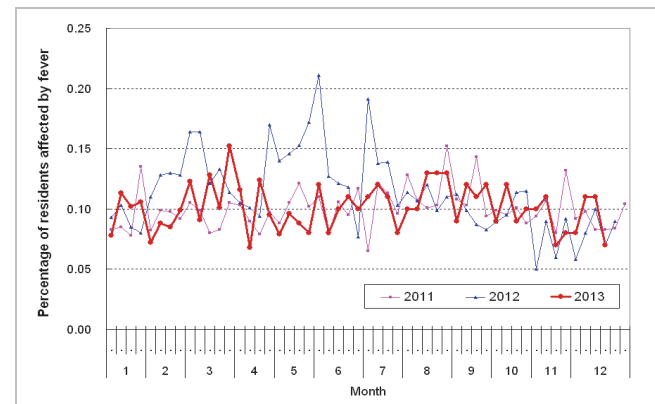


Figure 9 Percentage of residents with fever at sentinel RCHE, 2011-13

Influenza-like illness surveillance among sentinel Chinese medicine practitioners, 2011-13

In week 51, the average consultation rate for ILI among Chinese medicine practitioners (CMPs) was 2.75 ILI cases per 1,000 consultations (Figure 10).

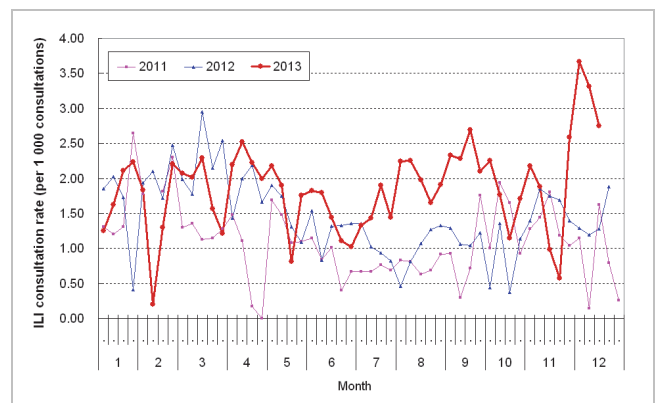


Figure 10 ILI consultation rate at sentinel CMP, 2011-13

Surveillance of severe paediatric influenza-associated complication/death (Aged above one month and below 18 years)

- In week 51 and the first 5 days of week 52 (Dec 22 to 26, 2013), there were no new reports of severe paediatric influenza-associated complication/death.

Note: The data reported are provisional figures and subject to further revision.

Surveillance of Tamiflu resistant influenza A(H1N1)pdm09 virus infection

- In week 51 and the first 5 days of week 52 (Dec 22 to 26, 2013), there were no new reports of oseltamivir (Tamiflu) resistant influenza A(H1N1)pdm09 virus infection. There are totally 39 reports of Tamiflu resistant influenza A(H1N1)pdm09 virus detected in Hong Kong since 2009.

Global Situation of Influenza Activity

- In the United States (week ending Dec 14, 2013), the influenza activity continued to increase.
- In Canada (week ending Dec 14, 2013), the influenza activity continued to increase.
- In the United Kingdom (week ending Dec 15, 2013), the ILI consultation rate remained low.
- In Europe (week ending Dec 15, 2013), the influenza activity remained low throughout the Region.
- In Singapore (week ending Dec 21, 2013), the number of consultations for acute respiratory infections remained low.

Sources:

Information have been extracted from the following sources when updates are available: [United States Centers for Disease Control and Prevention](#), [Public Health Agency of Canada](#), [United Kingdom Health Protection Agency](#), [World Health Organization/Europe Euroflu](#) and [Singapore Ministry of Health](#).