

# FLU EXPRESS



*Flu Express* is a weekly report produced by the Respiratory Disease Office of the Centre for Health Protection. It monitors and summarizes the latest local and global influenza activities.

## Local Situation of Influenza Activity (as of May 15, 2013)

**Reporting period: May 5 – 11, 2013 (Week 19)**

- The latest surveillance data showed that the local influenza activity continued to decline.
- The Centre for Health Protection has collaborated with the Hospital Authority and private hospitals to monitor influenza associated intensive care unit (ICU) admissions or deaths (aged 18 years or above) since Jan 18, 2013. As of May 15, there were 69 cases of influenza associated ICU admission or death, of which 29 of them were fatal.
- Influenza can cause serious illnesses in high-risk individuals and even healthy persons. Except for those with contraindications, influenza vaccination is suitable for all members of the public.
- Children between the age of six months and less than 6 years old as well as elderly people aged 65 years and above are eligible to receive subsidised vaccination from enrolled private doctors participating in the Government's vaccination subsidy schemes starting from Sep 24, 2012.

### Influenza-like-illness surveillance among sentinel general outpatient clinics, 2011-13

In week 19, the average consultation rate for influenza-like illness (ILI) among sentinel general outpatient clinics (GOPCs) was 3.6 ILI cases per 1,000 consultations (Figure 1).

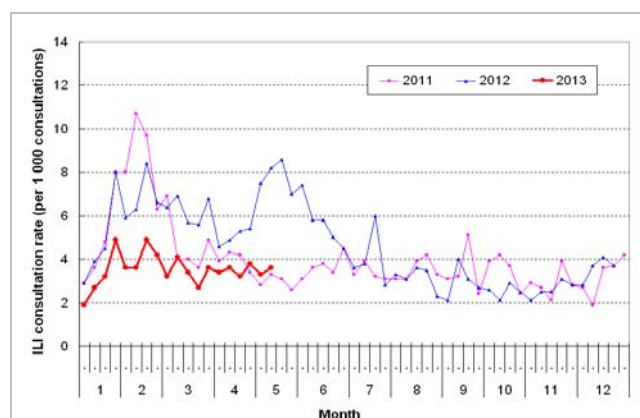


Figure 1 ILI consultation rate at sentinel GOPC, 2011-13

### Influenza-like illness surveillance among sentinel private doctors, 2011-13

In week 19, the average consultation rate for ILI among sentinel private doctors was 44.5 ILI cases per 1,000 consultations (Figure 2).

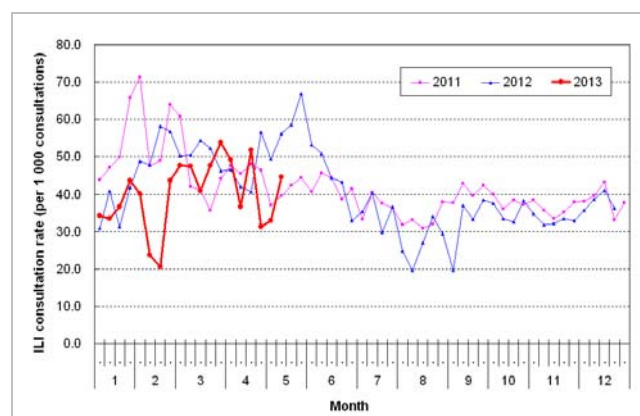


Figure 2 ILI consultation rate at sentinel GP, 2011-13

### Influenza virus detections (Laboratory

## surveillance), 2012-13

In week 19, the number of influenza viruses detected in the Public Health Laboratory Centre was 106, including 77 influenza A (H1N1)2009 viruses, 23 influenza A (H3) viruses and 6 influenza B viruses (Figure 3).

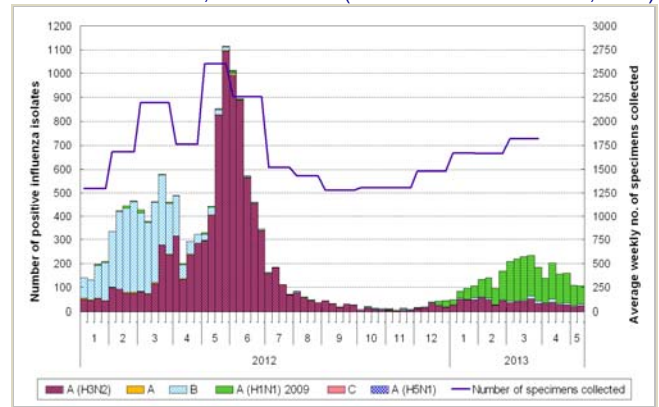


Figure 3 Influenza virus detections, 2012-13

## Influenza-like illness outbreak monitoring, 2012-13

In week 19, 9 ILI outbreaks occurring in schools/institutions were recorded (Figure 4). In the first 4 days of week 20 (May 12 to 15, 2013), 6 ILI outbreaks occurring in schools/institutions were recorded.

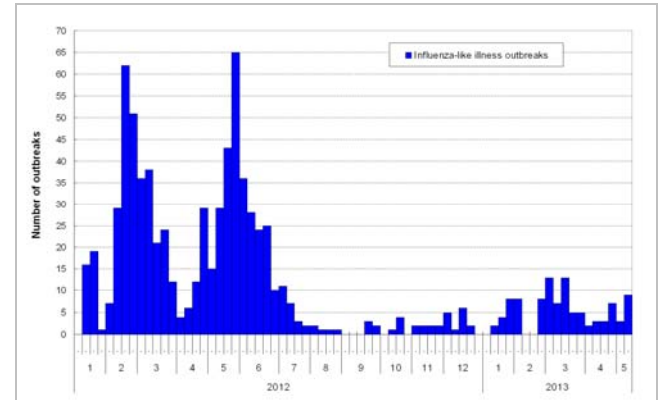


Figure 4 ILI outbreaks, 2012-13

## Rate of influenza-like illness syndrome group in accident and emergency departments, 2011-13<sup>#</sup>

In week 19, the rate of the influenza-like illness syndrome group in the accident and emergency departments (AED) was 163.0 (per 1,000 coded cases) (Figure 5).

<sup>#</sup>Note: The influenza-like illness syndrome group includes codes such as influenza, upper respiratory tract infection, fever, cough, throat pain, and pneumonia.

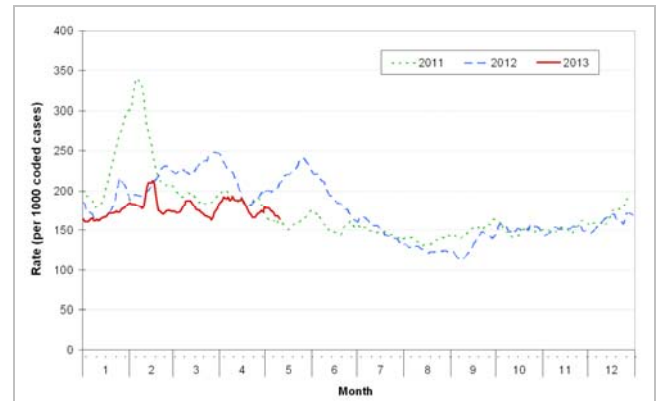


Figure 5 Rate of ILI syndrome group in AED, 2011-13

## Influenza associated hospital admission rates and deaths based on discharge coding, 2011-13

In week 19, hospital admission rates with principal diagnosis of influenza for persons aged 0-4 years, 5-64 years and 65 years or above were 0.50, 0.02 and 0.07 cases respectively (per 10,000 people in the age group) (Figure 6). Weekly number of deaths with any diagnosis of influenza in public hospitals is also shown in the figure on the right hand side.

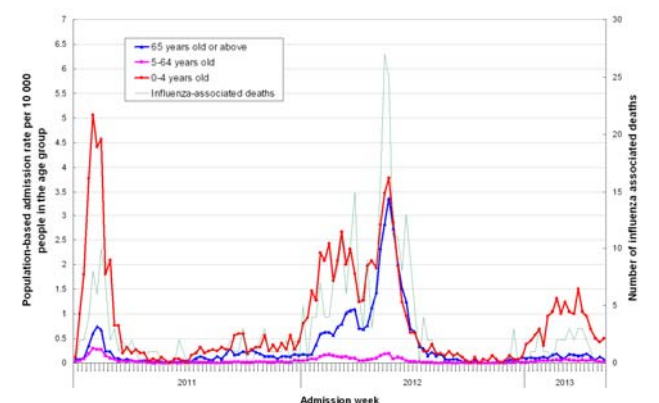


Figure 6 Influenza associated hospital admission rates and deaths, 2011-13

### Fever surveillance at sentinel child care centres/ kindergartens, 2011-13

In week 19, 0.51% of children in the sentinel child care centres / kindergartens (CCC/ KG) had fever (Figure 7).

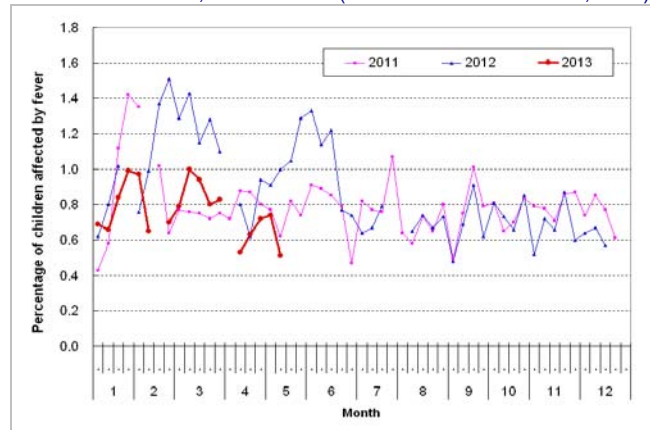


Figure 7 Percentage of children with fever at sentinel CCC/ KG, 2011-13

### Fever surveillance at sentinel residential care homes for the elderly, 2011-13

In week 19, 0.10% of residents in the sentinel residential care homes for the elderly (RCHEs) had fever (Figure 8).

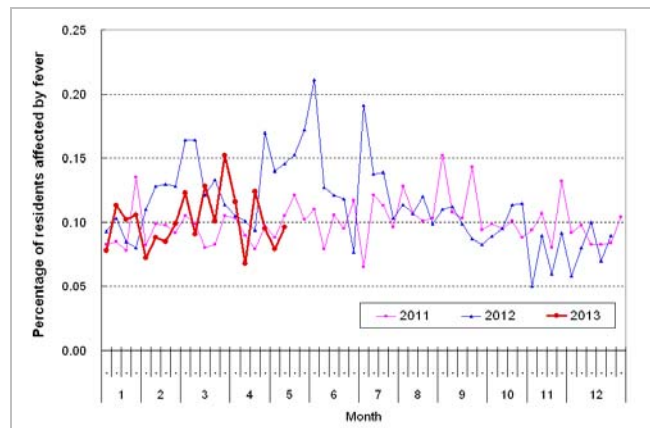


Figure 8 Percentage of residents with fever at sentinel RCHE, 2011-13

### Influenza-like illness surveillance among sentinel Chinese medicine practitioners, 2011-13

In week 19 the average consultation rate for ILI among Chinese medicine practitioners (CMPs) was 1.90 ILI cases per 1,000 consultations (Figure 9).

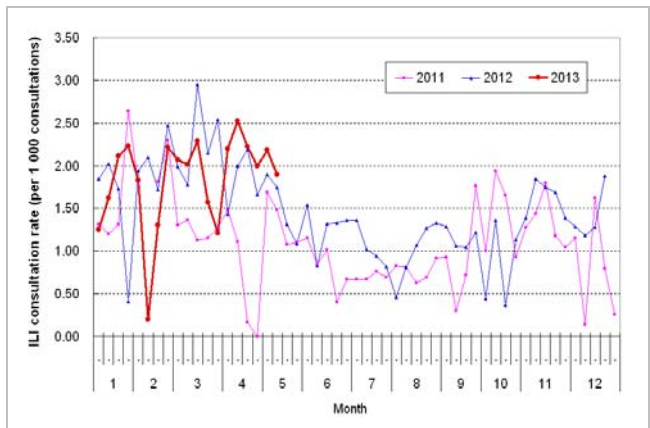


Figure 9 ILI consultation rate at sentinel CMP, 2011-13

### Enhanced Surveillance for Severe Seasonal Influenza (Aged 18 years or above)

- From May 8, 2013, 12:00 noon to May 15, 2013, 12:00 noon, one case of influenza associated ICU admission was recorded. In addition, one previously reported case who required ICU admission passed away during this reporting period.

Note: The data reported are provisional figures and subject to further revision.

## **Surveillance of severe paediatric influenza-associated complication/death (Aged above one month and below 18 years)**

- In week 19 and the first 4 days of week 20 (May 12 to 15, 2013), there were no new reports of severe paediatric influenza-associated complication/death.

Note: The data reported are provisional figures and subject to further revision.

## **Surveillance of Tamiflu resistant influenza A(H1N1)2009 virus infection**

- In week 19 and the first 4 days of week 20 (May 12 to 15, 2013), there were no new reports of oseltamivir (Tamiflu) resistant influenza A(H1N1)2009 virus infection. There are totally 30 reports of Tamiflu resistant influenza A(H1N1)2009 virus detected in Hong Kong since 2009.

## **Global Situation of Influenza Activity**

- In the United States (week ending May 4, 2013), the influenza activity remained low.
- In Canada (week ending May 4, 2013), the influenza activity continued to decline.
- In the United Kingdom (week ending May 5, 2013), the ILI consultation rate remained low.
- In Europe (week ending May 5, 2013), the ILI consultation rate was at low level in all countries.
- In Singapore (week ending May 11, 2013), the number of consultations for acute respiratory infections was below the warning level.

### **Sources:**

Information have been extracted from the following sources when updates are available: [United States Centers for Disease Control and Prevention](#), [Public Health Agency of Canada](#), [Public Health England](#), [World Health Organization/Europe Euroflu](#) and [Singapore Ministry of Health](#).