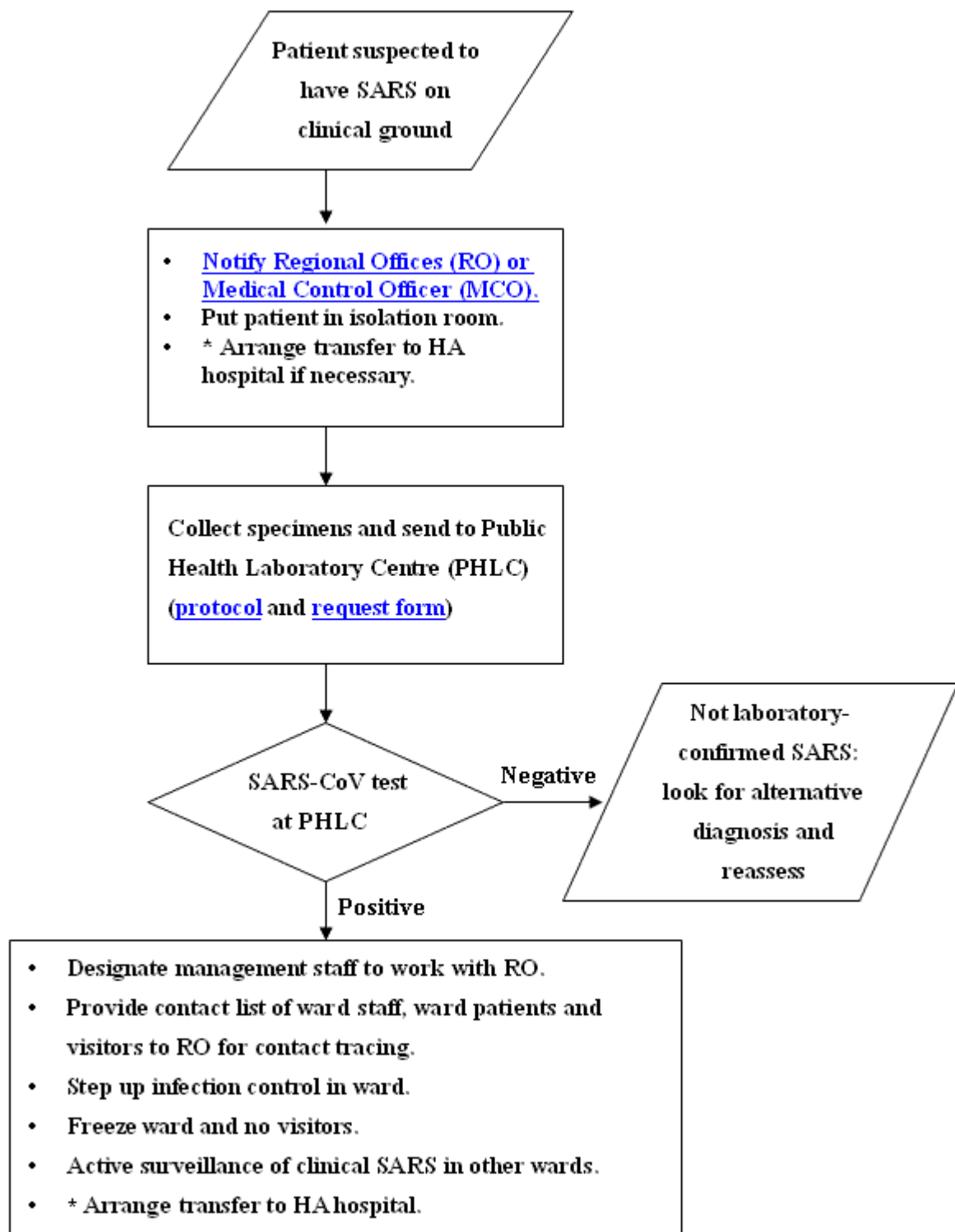


Guide to private hospitals in response to suspected SARS case

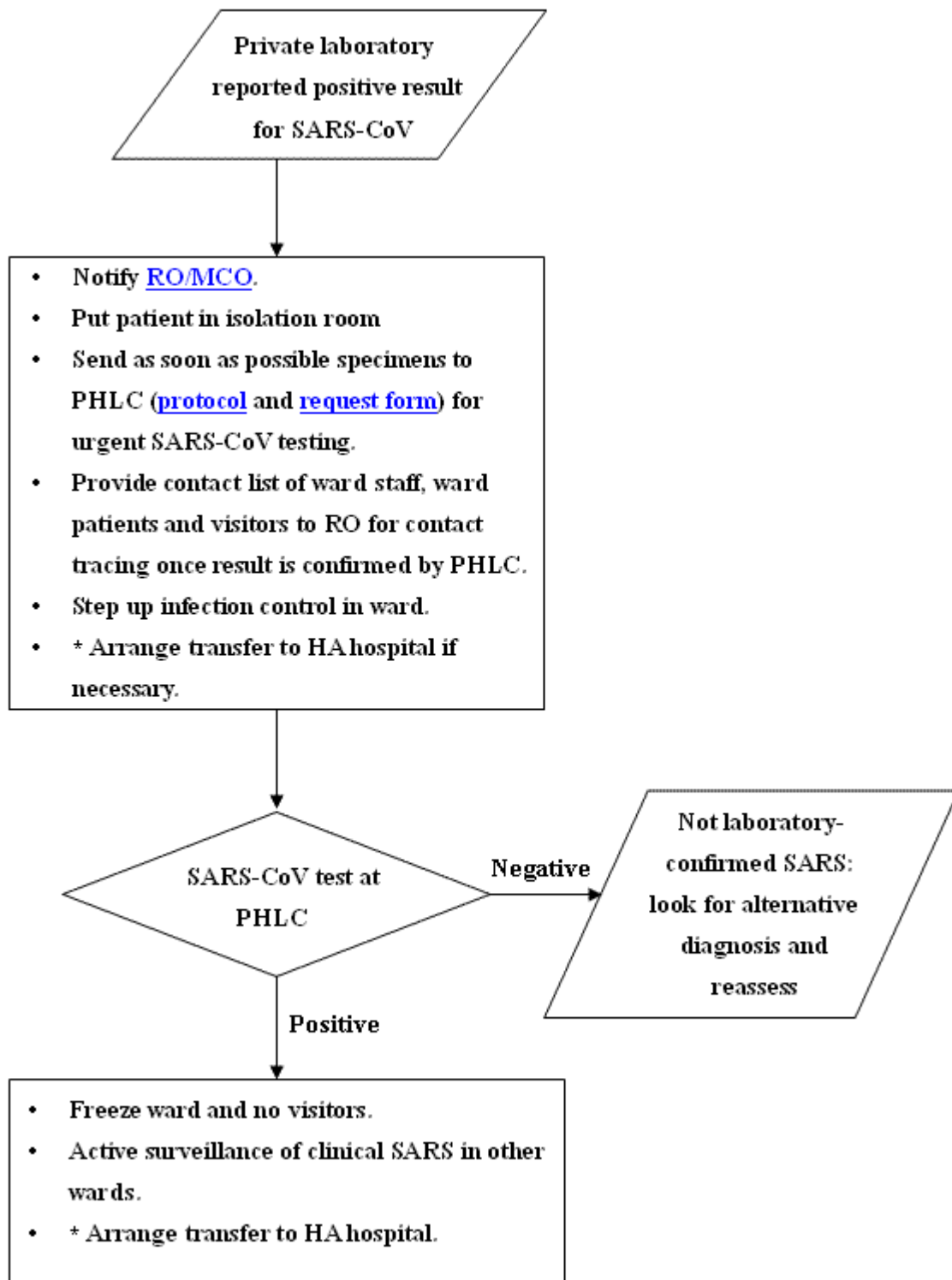
1. Submit [daily report form](#) to Dr Monica Wong, PMO(1) of DH.
2. Designate a contact person for SARS-related communications.
3. Respond according to the flowcharts.

Flowchart 1



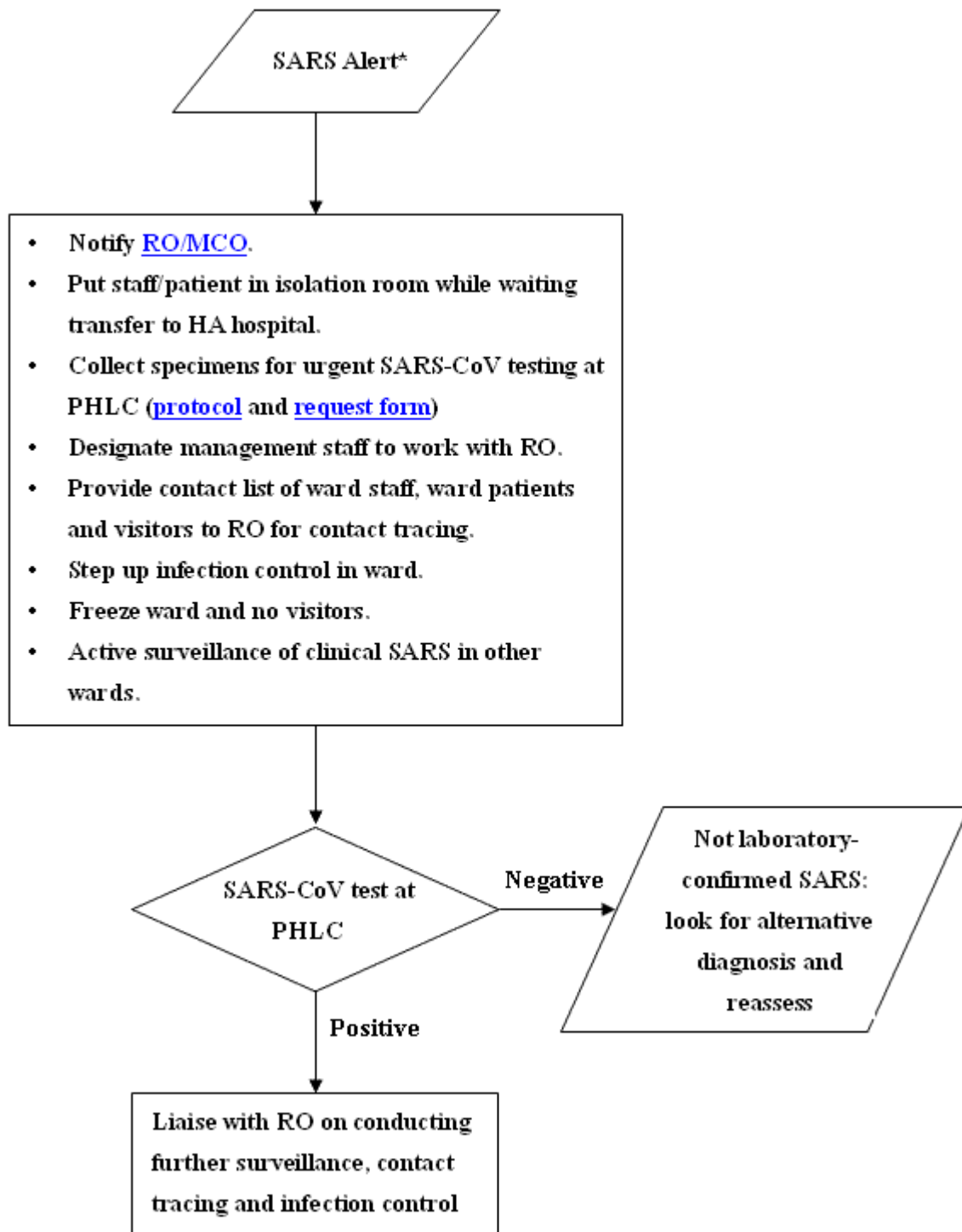
** Subject to individual hospital's facilities, settings and decision.*

Flowchart 2



** Subject to individual hospital's facilities, settings and decision.*

Flowchart 3



***SARS Alert is defined by the WHO as:**

Two or more health care workers in the same ward / unit fulfilling the clinical case definition of SARS and with onset of illness in the same 10-day period.

OR

Hospital acquired illness in three or more persons (health care workers and/or other hospital staff and/or patients and/or visitors) in the same ward/unit fulfilling the clinical case definition of SARS and with onset of illness in the same 10-day period.