

# 埃博拉(伊波拉)病毒病

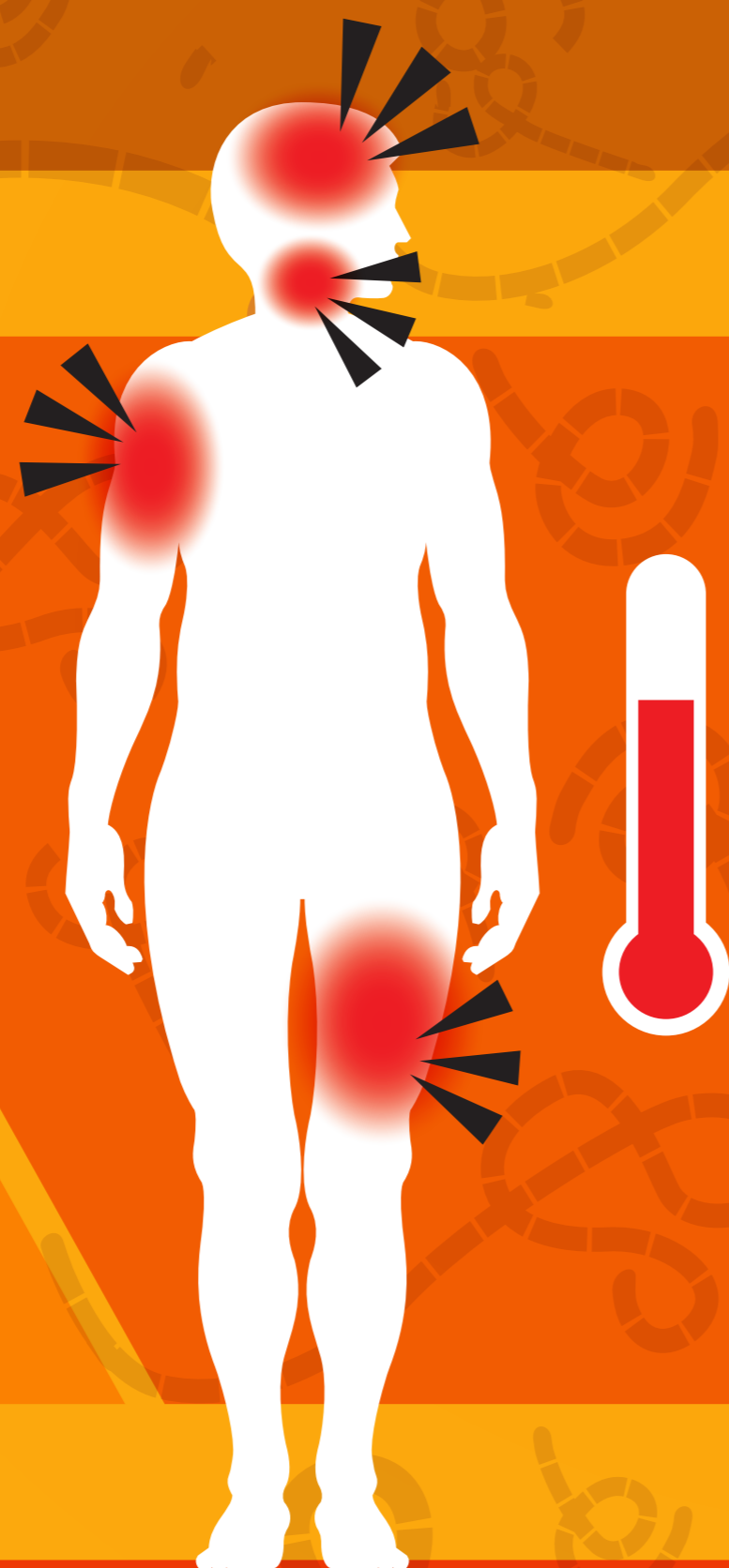
## Ebola Virus Disease



埃博拉(伊波拉)病毒病  
是一種嚴重且死亡率高的  
急性病毒性疾病  
Ebola virus disease is a severe  
acute viral illness with a high  
fatality rate

潛伏期  
Incubation period

2-21<sup>天</sup>  
days



患者可能出現突發性發燒、  
極度虛弱、肌肉疼痛、頭痛  
和咽喉痛

Patients may have sudden onset  
of fever, intense weakness, muscle  
pain, headache and sore throat



隨後會出現嘔吐、腹  
瀉、皮疹、腎臟和肝臟  
功能受損

This is followed by  
vomiting, diarrhoea, rash,  
impaired kidney and liver  
function



在某些情況下更會出現  
內出血和外出血

In some cases, both  
internal and external  
bleeding occurs



衛生防護中心  
Centre for Health Protection



衛生防護中心網站 Centre for Health Protection Website

[www.chp.gov.hk](http://www.chp.gov.hk)

衛生署健康教育專線  
Health Education Infoline of  
the Department of Health



衛生防護中心 Facebook 專頁 Centre for Health Protection Facebook Fanpage

[fb.com/CentreforHealthProtection](https://fb.com/CentreforHealthProtection)

2833 0111



衛生署  
Department of Health  
二零一九年十一月修訂  
Revised in November 2019