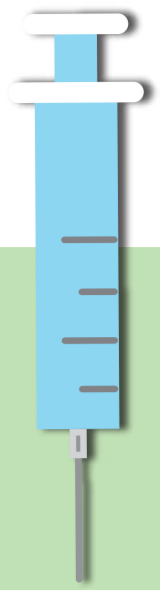


Know more about measles



What is measles?

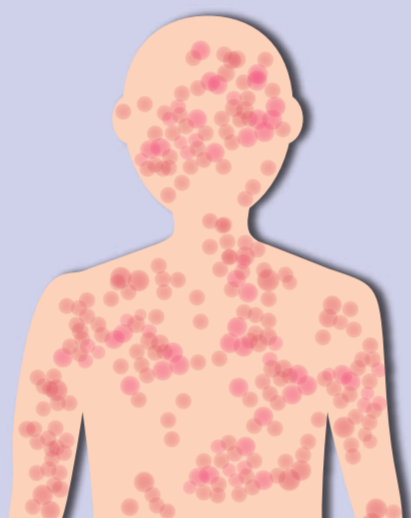
- **Highly infectious**

Can pass to others from 4 days before to 4 days after appearance of rash



- Present initially with fever, cough, runny nose, red eyes and white spots inside the mouth

- Develop a red blotchy skin rash, which usually spreads from face to the rest of body, 3 to 7 days later



- In severe cases, lung, gut and brain may be affected or even lead to death

Prevention

- **Vaccination** is the most effective preventive measure
- Take about two weeks after vaccination for antibodies to develop
- Two doses of vaccine are 97% effective



- Keep hands clean



- Cover nose and mouth when sneezing or coughing



- Wear a surgical mask when having symptoms



- Refrain from work or school till 4 days from appearance of rash

Are you immune to measles?

- Persons with history of confirmed measles infection are immune
- Persons born and attended primary schools in Hong Kong and have not had confirmed measles infection before:



Year of Birth	Generally, immune to measles
Before 1967	Yes ¹
1967 to 1984	Special Measles Vaccination Campaign of the Government in 1997 OR One-off Free Measles Vaccination Mop-up Programme of the Government in 2019-2020
	Joined → Yes ³ Not joined → No ²
1985 or after	Yes ³

¹ Majority of those who were born before 1967 in Hong Kong have contracted measles in the past

² May have only received one dose of measles vaccine

³ Should have received two doses of measles vaccine

- Those with incomplete vaccination, unknown vaccination history or unknown immunity against measles should consult doctor for advice

