

## **Latest situation of cases of COVID-19 (as of 3 November 2021)**

Since 31 December 2019, the Centre for Health Protection (CHP) of the Department of Health has recorded a total of 12353 cases of COVID-19, including 12352 confirmed cases and 1 probable case (Case no. 97). Among these cases, 12034 were discharged and 213 were fatal cases, and 70 cases were still hospitalised or pending admission (Figure 1)..

**Table 1: Details of new confirmed/probable cases of COVID-19 reported on 3 November 2021**

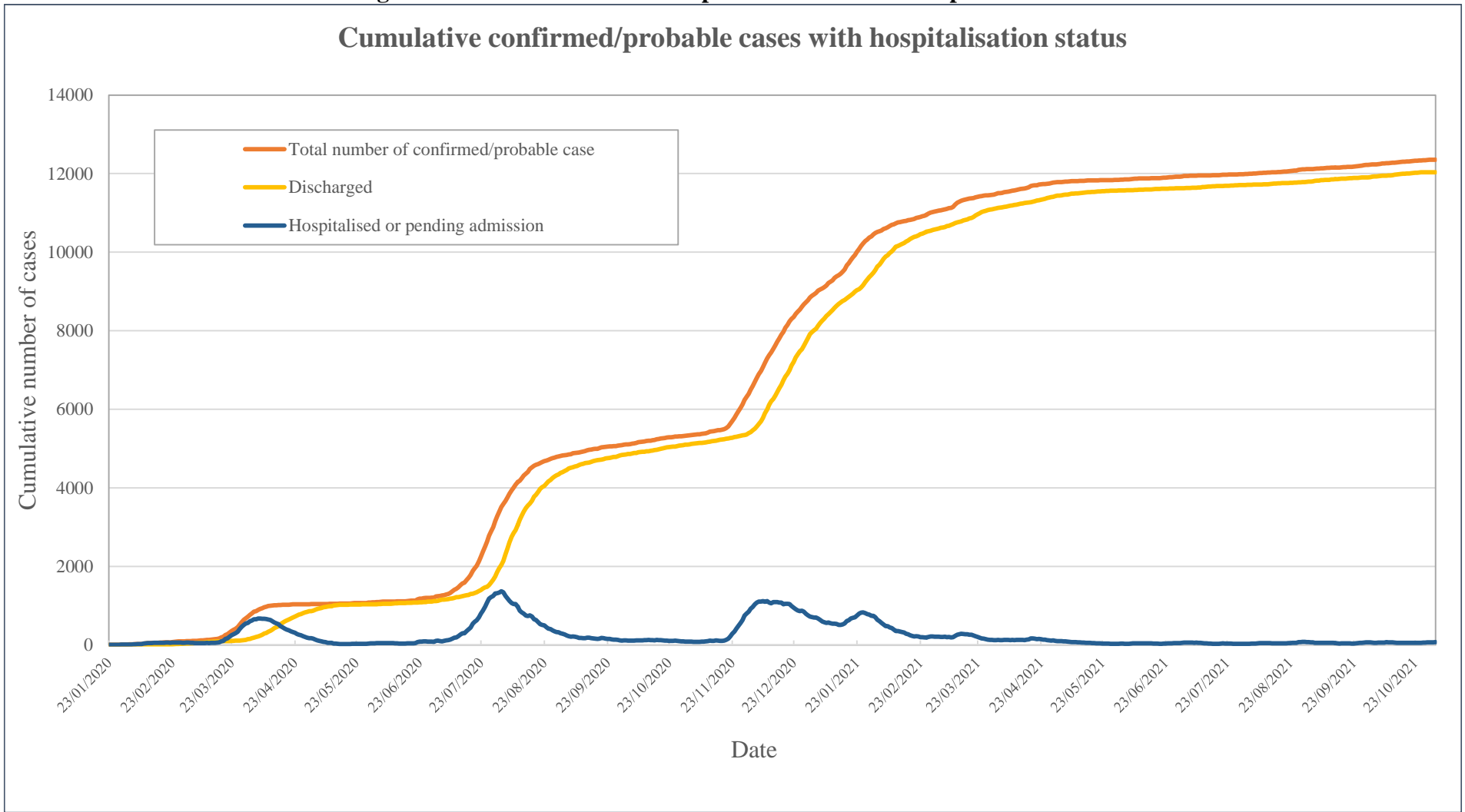
<b>Case no.</b>	<b>Report date</b>	<b>Date of onset</b>	<b>Gender</b>	<b>Age</b>	<b>HK/Non-HK resident</b>	<b>Case classification*</b>	<b>Confirmed/probable</b>
12356	03/11/2021	Asymptomatic	M	26	HK resident	Imported case	Confirmed
12357	03/11/2021	01/11/2021	M	62	HK resident	Imported case	Confirmed
12358	03/11/2021	01/11/2021	F	57	HK resident	Imported case	Confirmed

\* The case classification may be subject to changes when there is new information available.

For details of previously reported cases, please refer to the COVID-19 thematic website at [https://www.chp.gov.hk/files/xls/previous\\_cases\\_covid19\\_en.xlsx](https://www.chp.gov.hk/files/xls/previous_cases_covid19_en.xlsx)

Five cases were deleted from the list of confirmed cases of COVID-19 in Hong Kong on 3 September 2021 (<https://www.info.gov.hk/gia/general/202109/03/P2021090300392.htm>)

**Figure 1: Cumulative confirmed/probable cases with hospitalisation status**



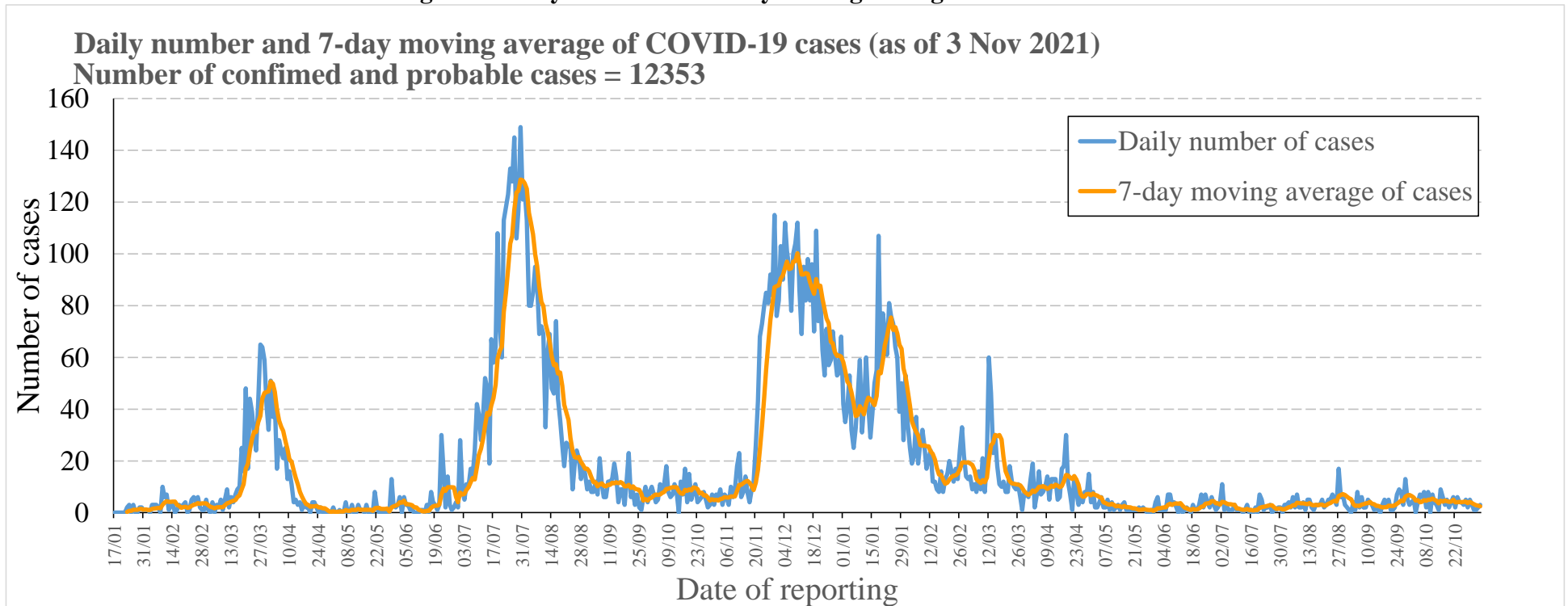
Note: 213 confirmed cases were fatal cases.

**Table 2: Number of confirmed cases by case classification**

Reporting period	Imported case	Local case	Possibly local	Epidemiologically linked with imported case	Epidemiologically linked with local case	Epidemiologically linked with possibly local case	Period total
Since first reported case on 23 January 2020	2950 (23.9%)	3158 (25.6%)	103 (0.8%)	59 (0.5%)	6021 (48.7%)	62 (0.5%)	12353 (100.0%)
7/10 - 13/10	31 (96.9%)	1 (3.1%)	0 (0.0%)	0 (0.0%)	0 (0.0%)	0 (0.0%)	32 (100.0%)
14/10 - 20/10	30 (100.0%)	0 (0.0%)	0 (0.0%)	0 (0.0%)	0 (0.0%)	0 (0.0%)	30 (100.0%)
21/10 - 27/10	30 (100.0%)	0 (0.0%)	0 (0.0%)	0 (0.0%)	0 (0.0%)	0 (0.0%)	30 (100.0%)
28/10 - 3/11	17 (100.0%)	0 (0.0%)	0 (0.0%)	0 (0.0%)	0 (0.0%)	0 (0.0%)	17 (100.0%)

In the recent 7-day period from 28 October - 3 November, 2021, an average of 2.4 cases were reported per day, as compared with 4.3 cases per day reported in the previous 7-day period from 21 - 27 October, 2021 (Figure 2).

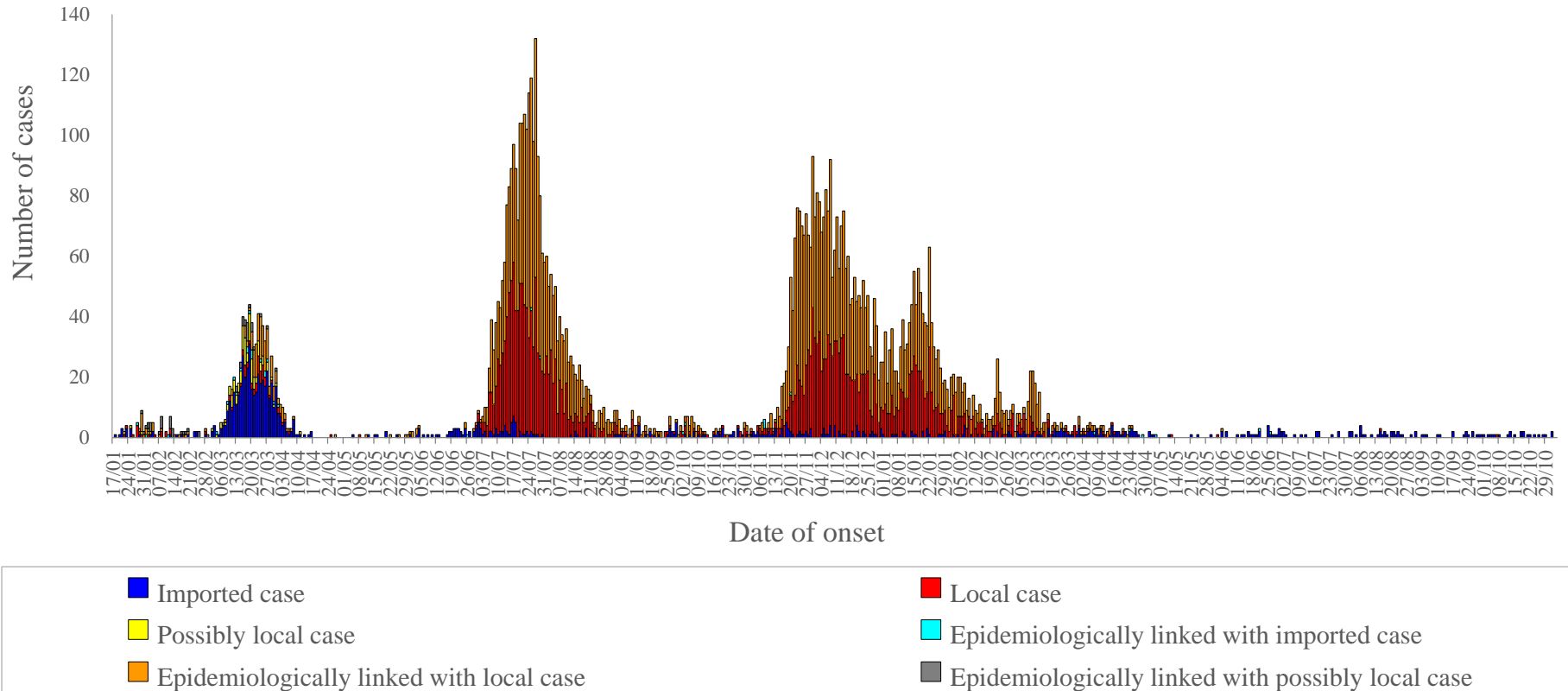
**Figure 2: Daily number and 7-day moving average of COVID-19 cases**



**Figure 3: Epidemic curve of confirmed and probable cases of COVID-19 in Hong Kong**

**Epidemic curve of confirmed and probable cases of COVID-19 in Hong Kong (as of 3 Nov 2021)**

**Number of confirmed and probable cases = 12353**



Note:

1. The case classification may be subject to changes when there is new information available.
2. Asymptomatic cases are not shown in this epidemic curve.

Figure 4 shows cases including 5941 males and 6412 females with ages of the cases ranged from 12 days to 100 years (median: 43 years).

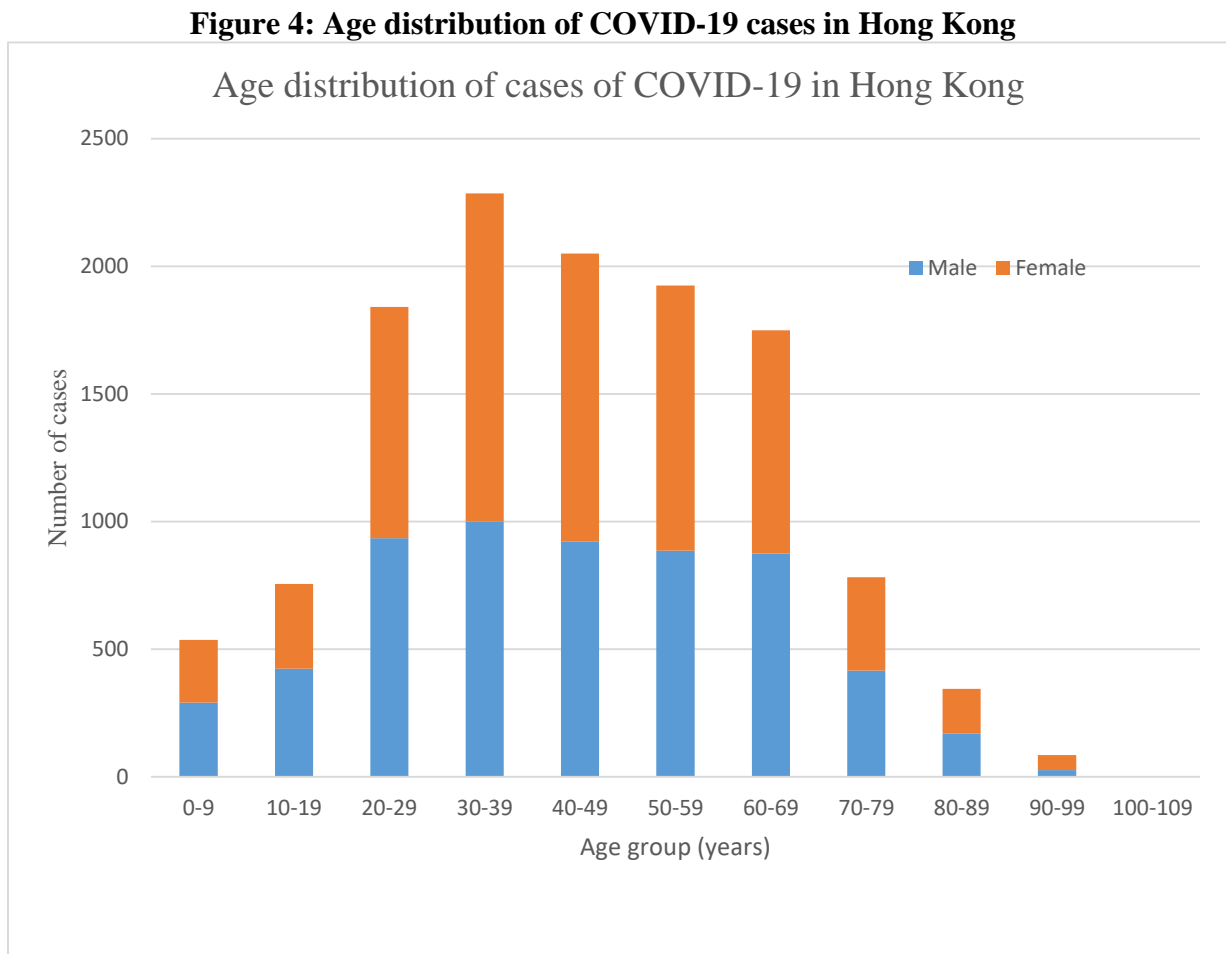
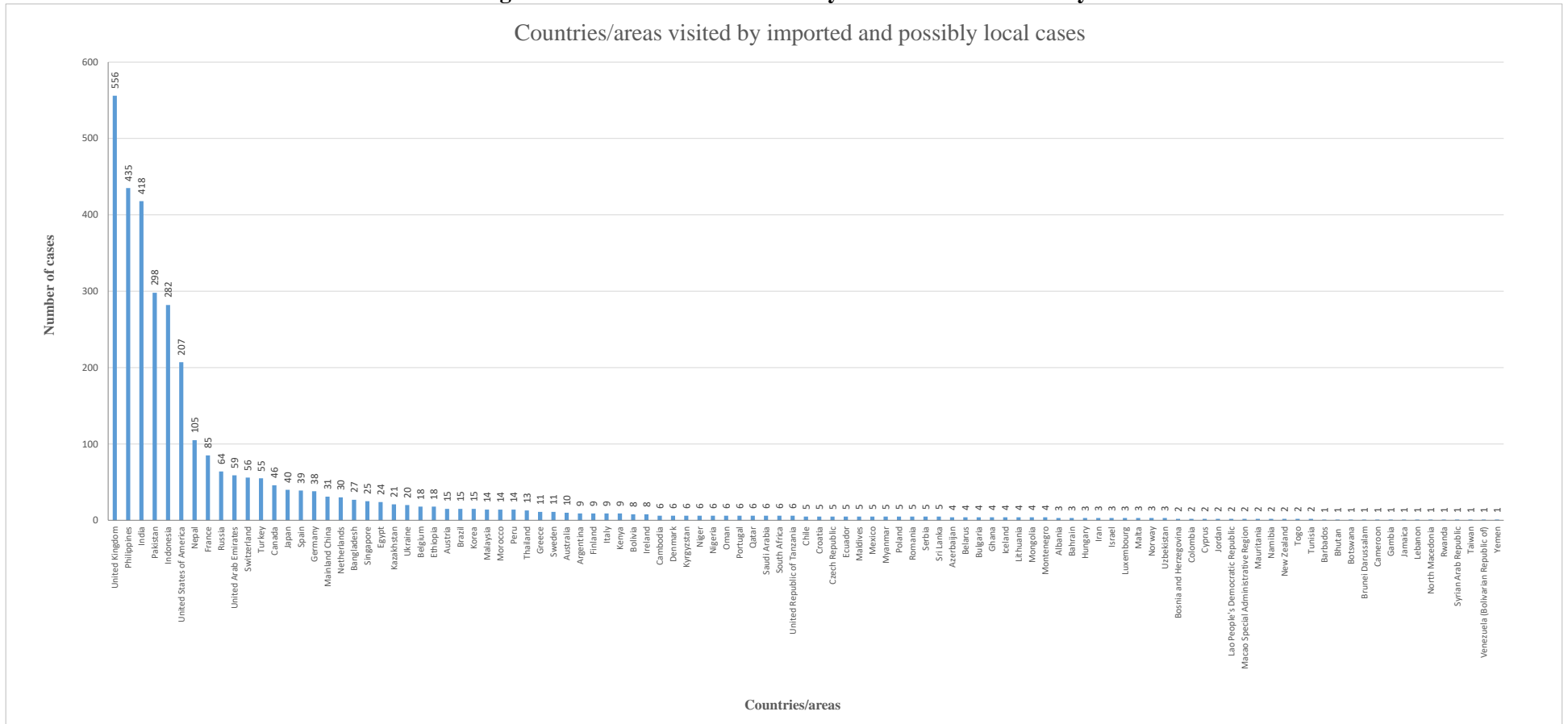


Figure 5 shows the countries/areas visited by the cases with travel history outside Hong Kong during the incubation period (imported and possibly local cases).

**Figure 5: Countries/areas visited by cases with travel history**

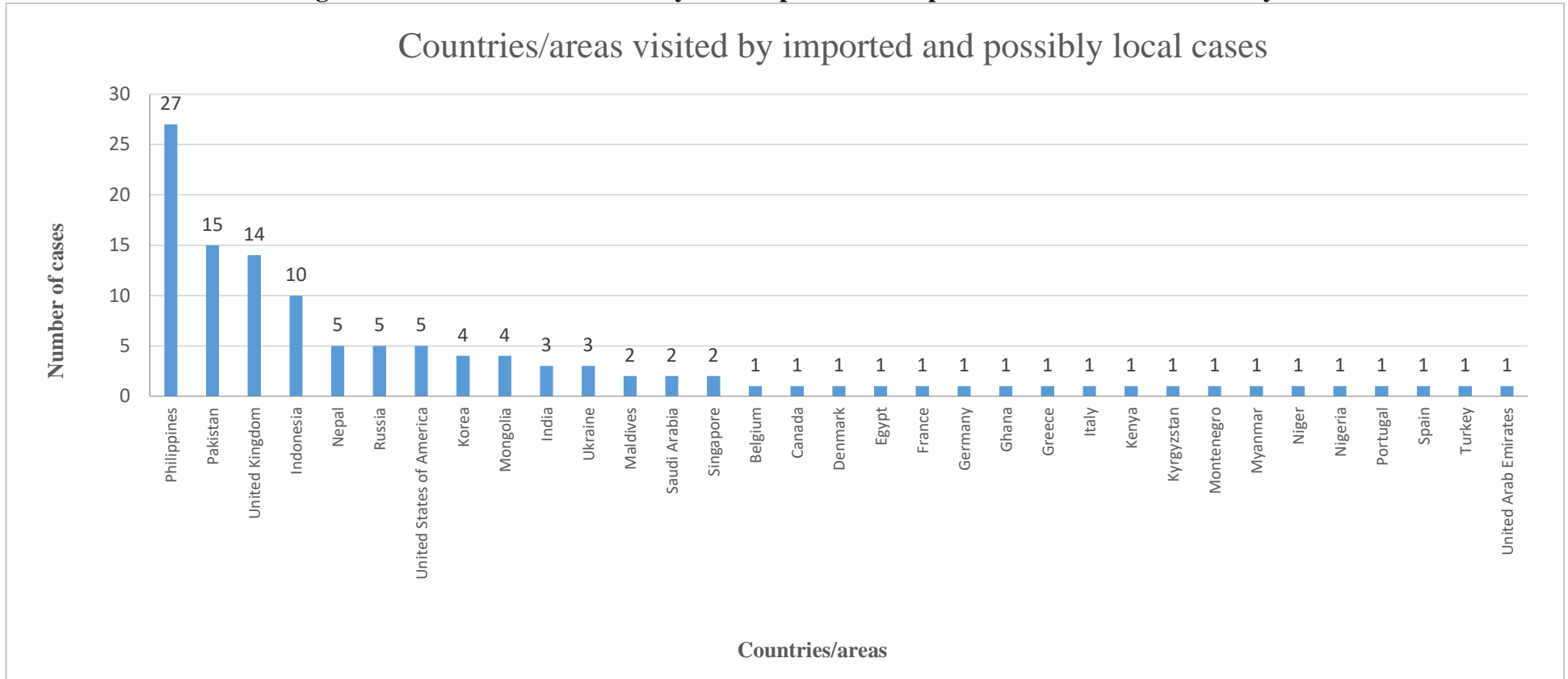
Countries/areas visited by imported and possibly local cases



Note: Some cases had visited more than one country/area.

Figure 6 shows the countries/areas visited by the cases reported in the past 4 weeks with travel history outside Hong Kong during the incubation period (imported and possibly local cases).

**Figure 6: Countries/areas visited by cases reported in the past 4 weeks with travel history**



Note: Some cases had visited more than one country/area.

**Table 3: Mode of detection for confirmed and probable cases in Hong Kong**

<b>Category</b>	<b>Number of cases (percentage)</b>
(1) Cases fulfilling the reporting criteria of COVID-19	336 (2.7%)
(2) Enhanced laboratory surveillance in public hospitals	717 (5.8%)
(3) Enhanced surveillance at Accident and Emergency Departments / General Outpatient Clinics	2582 (20.9%)
(4) Diagnosis / Enhanced surveillance in private hospitals and clinics	1337 (10.8%)
(5) Medical surveillance / contact tracing by Centre for Health Protection	4160 (33.7%)
(6) Enhanced surveillance for asymptomatic inbound travelers	1618 (13.1%)
(7) Enhanced surveillance for persons with higher risk of exposure	26 (0.2%)
(8) Private testing for the targeted groups*	98 (0.8%)
(9) Universal Community Testing Programme	32 (0.3%)
(10) Community testing centre^	1437 (11.6%)
(11) Others	10 (0.1%)
Total	12353 (100.0%)

\* <https://www.info.gov.hk/gia/general/202009/19/P2020091900029.htm>

^ Including 1 case detected by temporary testing centre



**Table 4: Large clusters with 10 or more cases\***

<b>Cluster</b>	<b>Involved case number</b>	<b>Number of cases</b>
Diamond Princess Cruise Ship	14, 71, 78, 79, 80, 81, 87, 88, 94, 96, 97	11
Hotpot dinner gathering at Kwun Tong	27, 29, 30, 31, 32, 33, 34, 35, 36, 37, 41, 44, 50	13
Fook Wai Ching She in Maylun Apartments in North Point	64, 65, 70, 73, 74, 76, 77, 83, 84, 86, 89, 91, 92, 93, 95, 98, 102, 103, 112	19
Travel tour to Egypt / Heng Tai House of Fu Heng Estate	119, 120, 121, 123, 124, 125, 126, 127, 129, 140	10
Bar and band cluster	182, 227, 276, 343, 360, 362, 367, 384, 386, 387, 389, 394, 395, 411, 413, 422, 428, 432, 433, 434, 440, 442, 447, 450, 453, 458, 462, 466, 477, 481, 483, 484, 497, 498, 499, 501, 504, 509, 510, 511, 512, 513, 514, 515, 516, 517, 519, 524, 525, 526, 531, 573, 576, 577, 578, 579, 581, 614, 615, 625, 626, 627, 630, 632, 635, 638, 663, 670, 674, 691, 707, 738, 746, 755, 756, 757, 760, 796, 810, 838, 844, 846, 855, 863, 864, 877, 884, 891, 904, 905, 906, 912, 913, 926, 928, 929, 930, 951, 973, 974, 976, 998, 1008	103
Wedding party at Lantau Island	191, 217, 233, 237, 250, 253, 258, 259, 287, 295, 303, 304, 332, 373, 378	15
Kerry Logistics/ Luk Chuen House	1084, 1085, 1086, 1087, 1088, 1089, 1090, 1091, 1092, 1100, 1109, 1110	12
Bun Kee/ Sun Fat/ Kin Wing	1269, 1283, 1289, 1291, 1295, 1297, 1301, 1304, 1317, 1322, 1324, 1329, 1356, 1357, 1358, 1359, 1361, 1388, 1389, 1391, 1394, 1396, 1402, 1403, 1414, 1416, 1427, 1432, 1438, 1449, 1455, 1456, 1457, 1464, 1490, 1630, 1649, 1660, 1701, 1728, 1752, 1834, 1904, 2371, 2490, 3136	46
Kong Tai Care for the Aged Centre	1298, 1302, 1307, 1310, 1311, 1312, 1316, 1321, 1323, 1334, 1335, 1336, 1337, 1338, 1339, 1340, 1341, 1342, 1343, 1344, 1345, 1346, 1347, 1348, 1349, 1350, 1351, 1352, 1353, 1354, 1355, 1360, 1395, 1404, 1407, 1408, 1410, 1473, 1485, 1487, 1560, 1606, 1659, 1688, 2343, 3860	46
Ming Chuen House of Shui Chuen O Estate	1294, 1377, 1378, 1379, 1380, 1381, 1382, 1383, 1384, 1385, 1386, 1387	12
Tsz Wan Shan Shopping Centre Green River	1430, 1440, 1444, 1445, 1484, 1507, 1508, 1519, 1521, 1522, 1531, 1532, 1551, 1552, 1555, 1586, 1605, 1622, 1623, 1626, 1698, 1702, 1744, 1756, 1835, 1841, 1843, 1844, 1934, 1935, 2001, 2014, 2130, 2187, 2232, 2278, 2279, 2636	38

Tsz Wan Shan Shopping Centre Windsor	1477, 1514, 1517, 1520, 1534, 1555, 1567, 1569, 1572, 1587, 1588, 1601, 1619, 1620, 1621, 1666, 1682, 1683, 1727, 1744, 1757, 1764, 1802, 1819, 2187, 2279	26
Grand Plaza Taoheung	1632, 1652, 1663, 1721, 1765, 1774, 1797, 1820, 1832, 1899, 1900, 1928, 1962, 1967, 1969, 1978, 1992, 2008, 2036, 2060, 2089, 2136, 2152, 2189, 2229, 2255, 2260, 2273, 2327, 2334, 2340, 2344, 2394, 2409, 2412, 2486, 2547, 2877, 3163, 3241, 3476, 4335	42
Tuen Mun Central Square Fulum Restaurant	1739, 1740, 1743, 1783, 1951, 1952, 1988, 1993, 1998, 2017, 2062, 2083, 2144, 2147, 2153, 2154, 2165, 2170, 2176, 2177, 2267, 2280, 2308, 2374, 2381, 2399, 2421, 2455, 2456, 2457, 2459, 2465, 2492, 2615, 2707, 2763, 2874, 2875, 2932, 2943, 3013, 3018, 3274, 3475	44
Metroplaza Chiuchow Garden	1730, 1770, 1786, 1838, 1841, 1842, 1862, 1912, 1920, 1929, 1933, 1954, 1984, 1985, 2248, 3104, 3111, 3317, 3677, 3966	20
Tsz Wan Shan Shopping Centre Deluxe Cuisine	1365, 1393, 1424, 1425, 1509, 1510, 1515, 1519, 1537, 1538, 1551, 1552, 1607, 1626, 1662, 1666, 1703, 1711, 1800, 1841, 1843, 1880, 1887, 1946, 2035, 2076, 2086, 2098, 2166, 2187, 2428, 2645	32
Metropark Hotel Mongkok Victoria Harbour Restaurant	1483, 1613, 1768, 1799, 1806, 1896, 1906, 1919, 1951, 1979, 2045, 2090, 2332, 2728, 3151	15
The Salvation Army Lung Hang Residence For Senior Citizens	2052, 2224, 2304, 2305, 2366, 2367, 2368, 2404, 2405, 2506, 2795, 2882, 2999, 3569, 4367	15
Cornwall Elderly's Home (Golden Branch), Tuen Mun	2254, 2477, 2543, 2586, 2587, 2588, 2589, 2590, 2591, 2592, 2701, 2702, 2703, 2704, 2705, 2708, 2745, 2746, 2747, 2748, 2749, 2750, 2756, 2793, 2794, 2820, 2842, 2938, 2940, 2941, 2942, 2955, 2975, 3090, 3153, 3215, 3260, 3501, 3683, 3802	40
Kin Shing (Leung's) General Contractors Ltd./ Millennium City 3	2396, 2434, 2478, 2479, 2535, 2536, 2550, 2635, 2662, 2720, 2725, 2742, 2811, 2822, 2845, 2854, 2858, 2894, 2927, 2953, 2982, 2997, 3055, 3131, 3139, 3198, 3231, 3293, 3294, 3405, 3541, 3600	32
Star Global Direct Sales	2289, 2476, 2546, 2722, 2765, 2935, 2984, 3102, 3154, 3165, 3205, 3224, 3291, 3295, 3296, 3320, 3321, 3322, 3326, 3350, 3358, 3368, 3369, 3408, 3441, 3458, 3469, 3470, 3487, 3490, 3492, 3517, 3540, 3574, 3578, 3590, 3593, 3599, 3615, 3665, 3673, 3689, 3711, 3712, 3721, 3730, 3755, 3777, 3857, 3895, 3919, 3920, 3923, 4002, 4062, 4184, 4562, 4563, 4564, 4596, 4634	61
Sheung Shui Slaughter House	2671, 2727, 2770, 2806, 2833, 2849, 2952, 3069, 3095, 3149, 3277, 3278, 3279, 3284, 3285, 3304, 3582, 3663, 3667, 3937, 3938, 3939, 4006, 4007	24
Construction site at Kong Nga Po, Man Kam To	3080, 3181, 3182, 3337, 3338, 3379, 3388, 3436, 3437, 3438, 3442, 3443, 3459, 3477, 3552, 3688, 3737, 3912, 3913, 3994, 4040, 4123, 4140	23

Hung Hom Market	1877, 2283, 2316, 2341, 2888, 3185, 3188, 3290, 3418, 3464, 3643, 3668, 3731	13
Sham Shui Po King Fok Nursing Home	3068, 3502, 3584, 3585, 3637, 3707, 3733, 3734, 3735, 3739, 3771, 3791, 3962, 3963	14
Kwai Tsing Container Terminals	2189, 2987, 3313, 3742, 3764, 3977, 4003, 4037, 4090, 4105, 4181, 4183, 4192, 4203, 4215, 4221, 4238, 4272, 4293, 4313, 4333, 4336, 4343, 4352, 4353, 4365, 4380, 4381, 4386, 4409, 4410, 4414, 4415, 4416, 4417, 4418, 4420, 4421, 4428, 4429, 4436, 4440, 4442, 4443, 4444, 4445, 4446, 4450, 4451, 4452, 4453, 4454, 4455, 4456, 4457, 4458, 4459, 4460, 4462, 4463, 4470, 4480, 4504, 4517, 4528, 4570, 4576, 4577, 4588, 4589, 4590, 4638, 4640, 4660, 4667, 4734, 4747	77
Hong Chi Lei Muk Shue Hostel	4681, 4682, 4683, 4712, 4714, 4715, 4716, 4717, 4718, 4728, 4738, 4739, 4751, 4758, 4780, 4784, 4789, 4792, 4802, 4805, 4826, 4830, 4831, 4837	24
Transport City Building, Tai Wai	4824, 4851, 4854, 4855, 4881, 4884, 4888, 4889, 4890, 4892, 4893, 4897, 4899, 4977, 4993, 5021, 5022	17
China Secret/Holly Mansion	5098, 5107, 5111, 5112, 5123, 5130, 5134, 5141, 5142, 5148, 5164, 5175, 5183, 5193, 5201	15
The Home of Treasure	5140, 5149, 5151, 5152, 5153, 5154, 5155, 5156, 5157, 5158, 5159, 5160, 5174, 5179, 5180, 5181, 5185, 5187, 5241, 5267	20

Dancing/Singing Cluster	5487, 5500, 5502, 5503, 5511, 5513, 5514, 5515, 5516, 5517, 5518, 5520, 5524, 5525, 5529, 5530, 5531, 5532, 5533, 5537, 5538, 5541, 5544, 5545, 5546, 5547, 5548, 5550, 5551, 5552, 5554, 5555, 5556, 5557, 5560, 5561, 5564, 5567, 5568, 5571, 5573, 5574, 5576, 5578, 5579, 5581, 5582, 5583, 5585, 5587, 5588, 5590, 5591, 5592, 5593, 5594, 5595, 5596, 5597, 5598, 5599, 5600, 5601, 5602, 5605, 5606, 5607, 5608, 5609, 5610, 5611, 5612, 5613, 5614, 5615, 5616, 5617, 5618, 5619, 5622, 5625, 5627, 5629, 5632, 5633, 5634, 5636, 5638, 5640, 5641, 5642, 5643, 5644, 5647, 5648, 5649, 5656, 5657, 5659, 5660, 5661, 5662, 5665, 5666, 5667, 5668, 5669, 5670, 5671, 5672, 5673, 5674, 5675, 5676, 5677, 5679, 5680, 5681, 5682, 5683, 5684, 5685, 5688, 5689, 5690, 5693, 5695, 5696, 5697, 5698, 5699, 5700, 5701, 5703, 5708, 5711, 5713, 5714, 5719, 5721, 5722, 5723, 5725, 5726, 5728, 5729, 5730, 5731, 5733, 5734, 5736, 5737, 5738, 5739, 5740, 5741, 5742, 5743, 5745, 5746, 5747, 5748, 5750, 5751, 5752, 5753, 5754, 5755, 5756, 5757, 5762, 5764, 5766, 5767, 5768, 5769, 5770, 5771, 5772, 5773, 5774, 5775, 5776, 5778, 5780, 5781, 5782, 5783, 5785, 5786, 5787, 5788, 5789, 5790, 5791, 5792, 5796, 5797, 5798, 5799, 5800, 5801, 5802, 5804, 5805, 5806, 5807, 5808, 5810, 5811, 5812, 5813, 5818, 5819, 5822, 5823, 5824, 5825, 5827, 5828, 5830, 5831, 5832, 5834, 5835, 5836, 5840, 5841, 5842, 5843, 5844, 5845, 5846, 5847, 5848, 5849, 5850, 5852, 5853, 5854, 5855, 5856, 5857, 5858, 5859, 5861, 5862, 5863, 5864, 5865, 5866, 5867, 5868, 5869, 5870, 5873, 5875, 5879, 5880, 5881, 5883, 5884, 5885, 5886, 5887, 5888, 5889, 5891, 5894, 5896, 5897, 5898, 5900, 5901, 5903, 5904, 5905, 5906, 5907, 5908, 5910, 5911, 5915, 5917, 5918, 5919, 5920, 5921, 5922, 5923, 5924, 5925, 5927, 5928, 5929, 5930, 5932, 5933, 5934, 5935, 5937, 5939, 5940, 5941, 5942, 5943, 5945, 5946, 5947, 5950, 5955, 5956, 5957, 5959, 5960, 5961, 5963, 5964, 5965, 5967, 5970, 5971, 5972, 5973, 5974, 5975, 5976, 5978, 5979, 5982, 5983, 5984, 5985, 5989, 5990, 5991, 5997, 5998, 5999, 6000, 6001, 6002, 6006, 6007, 6008, 6009, 6010, 6011, 6012, 6013, 6014, 6015, 6016, 6018, 6019, 6020, 6021, 6022, 6023, 6024, 6025, 6026, 6030, 6031, 6032, 6033, 6035, 6037, 6039, 6040, 6041, 6042, 6045, 6046, 6047, 6048, 6049, 6054, 6057, 6060, 6062, 6063, 6065, 6067, 6069, 6070, 6073, 6074, 6076, 6077, 6079, 6080, 6081, 6082, 6083, 6084, 6085, 6087, 6090, 6093, 6095, 6096, 6098, 6100, 6104, 6105, 6106, 6107, 6108, 6109, 6110, 6111, 6112, 6113, 6114, 6115, 6117, 6119, 6120, 6125, 6135, 6137, 6138, 6140, 6141, 6142, 6143, 6145, 6148, 6149, 6151, 6152, 6154, 6156, 6157, 6158, 6162, 6165, 6166, 6169, 6173, 6175, 6178, 6180, 6183, 6184, 6185, 6186, 6190, 6195, 6196, 6197, 6198, 6199, 6200, 6202, 6203, 6204, 6207, 6208, 6209, 6210, 6212, 6215, 6216, 6217, 6219, 6220, 6221, 6222, 6223, 6224, 6225, 6226, 6227, 6228, 6232, 6233, 6234, 6236, 6238, 6239, 6252, 6254, 6256, 6257, 6260, 6261, 6262, 6263, 6264, 6265, 6266, 6267, 6268, 6269,	732
-------------------------	---	-----

	<p>6271, 6272, 6273, 6274, 6275, 6277, 6282, 6284, 6290, 6291, 6293, 6294, 6295, 6296, 6297, 6298, 6299, 6300, 6304, 6306, 6307, 6308, 6309, 6310, 6311, 6313, 6314, 6316, 6317, 6318, 6319, 6320, 6322, 6326, 6331, 6332, 6333, 6343, 6344, 6355, 6356, 6357, 6359, 6360, 6362, 6365, 6366, 6367, 6368, 6370, 6371, 6374, 6375, 6376, 6377, 6381, 6382, 6383, 6385, 6389, 6393, 6397, 6411, 6413, 6418, 6420, 6430, 6433, 6446, 6449, 6452, 6462, 6480, 6488, 6493, 6494, 6508, 6511, 6513, 6515, 6516, 6517, 6520, 6521, 6522, 6533, 6544, 6545, 6547, 6553, 6557, 6560, 6562, 6575, 6578, 6579, 6585, 6589, 6603, 6609, 6612, 6618, 6626, 6635, 6644, 6645, 6647, 6650, 6651, 6653, 6655, 6668, 6669, 6676, 6681, 6683, 6685, 6688, 6690, 6691, 6704, 6705, 6706, 6707, 6715, 6723, 6724, 6726, 6739, 6745, 6751, 6773, 6774, 6777, 6781, 6793, 6795, 6798, 6800, 6812, 6813, 6814, 6815, 6831, 6832, 6833, 6834, 6836, 6837, 6839, 6841, 6843, 6846, 6850, 6851, 6853, 6865, 6869, 6876, 6878, 6884, 6889, 6893, 6905, 6916, 6923, 6932, 6943, 6944, 6980, 6981, 6984, 6985, 6995, 7002, 7019, 7020, 7021, 7053, 7057, 7058, 7059, 7064, 7065, 7107, 7112, 7118, 7127, 7128, 7129, 7131, 7132, 7133, 7158, 7159, 7160, 7164, 7219, 7223, 7235, 7246, 7247, 7257, 7279, 7320, 7349, 7376, 7384, 7392, 7393, 7415, 7416, 7463, 7468, 7487, 7510, 7511, 7512, 7515, 7546, 7547, 7591, 7600, 7614, 7617, 7674, 7841, 7878, 7879, 7880, 7883, 7909, 7967, 8069, 8189, 8265</p> <p>Cases related to the following three clusters are included above:</p> <p>(1) Tung Wah Group of Hospitals Ho Yuk Ching Willow Lodge 6275, 6370, 6381, 6691, 6724, 6745, 6774, 6795, 6798, 6800, 6812, 6831, 6839, 6846, 6850, 6923, 7053, 7127, 7128, 7129, 7131, 7132, 7133, 7320</p> <p>(2) Residents of 5/F, Block 8, Kwai Shing West Estate 6069, 6135, 6256, 6609, 6683, 6685, 6793, 6832, 6833, 6834, 6869, 6889, 7057, 7058, 7059, 7468, 7841, 8189</p> <p>(3) Residents of Unit D, Block 6, Richland Gardens 5689, 5802, 5979, 6374, 6376, 6676, 7112, 7376, 7510, 7511, 7512, 7515</p>	
Sky Cuisine (Sheung Wan)	6097, 6159, 6188, 6251, 6279, 6301, 6302, 6305, 6415, 6428, 6467, 6487, 6550, 6563, 6630, 6634, 6694, 6742, 6763, 6791, 6854, 6942	22

Tung Wah Group Of Hospitals Fong Shu Chuen Day Activity Centre cum Hostel	6179, 6289, 6315, 6347, 6351, 6403, 6404, 6405, 6406, 6407, 6408, 6409, 6422, 6423, 6424, 6425, 6426, 6429, 6431, 6434, 6435, 6436, 6437, 6438, 6439, 6463, 6464, 6465, 6468, 6469, 6470, 6471, 6472, 6473, 6474, 6475, 6476, 6477, 6478, 6496, 6497, 6498, 6499, 6500, 6528, 6558, 6608, 6637, 6640, 6692, 6696, 6699, 6700, 6701, 6702, 6720, 6733, 6963, 7031, 7055, 7095	61
Construction sites at LOHAS Park/ Kai Tak	6345, 6346, 6387, 6416, 6445, 6448, 6451, 6453, 6454, 6455, 6456, 6481, 6482, 6483, 6484, 6485, 6486, 6489, 6491, 6503, 6507, 6509, 6510, 6555, 6568, 6598, 6611, 6617, 6628, 6629, 6631, 6632, 6638, 6744, 6775, 6776, 6797, 6823, 6842, 6844, 6857, 6867, 6868, 6873, 6879, 6896, 6897, 6915, 6935, 6954, 7040, 7141, 7218, 7241, 7262, 7263, 7322, 7373, 7388, 7414, 7436, 7456, 7554, 7586, 7646, 7648, 7722, 7781, 7782, 7806, 7899, 7975, 8011, 8026  Cases related to the following cluster are included above: Residents of Unit 15, Kwai Tung House, Tung Tau (II) Estate 6555, 6568, 6744, 6842, 7436, 7586, 7646, 7648, 7975	74
Chuen Cheung Kui	6055, 6136, 6167, 6171, 6247, 6276, 6303, 6325, 6350, 6566, 6576, 6678	12
Otto e Mezzo 8½ Bombana	6072, 6131, 6160, 6172, 6176, 6177, 6182, 6427, 6587, 6693, 7042, 7097, 7313, 7761, 7807, 7827, 7839, 7840, 7861, 7864, 7898, 7945, 8003	23
Lee Gardens Three Duckee	6564, 6665, 6740, 6746, 6752, 6859, 6860, 6910, 6937, 6976, 7034, 7102, 7110, 7197, 7337, 7747	16
AsiaWorld–Expo	6891, 6919, 6931, 7007, 7008, 7009, 7022, 7023, 7024, 7025, 7026, 7035, 7153, 7206, 7207, 7282, 7346, 7377, 7389, 7433, 7522, 7552, 7615, 7661, 7780	25
YATA Department Store (Shatin)	6848, 6934, 6993, 7033, 7051, 7090, 7184, 7227, 7267, 7268, 7269, 7270, 7357, 7374, 7613, 7715, 7961, 7983, 7984, 8012, 8021, 8074, 8089, 8090, 8112, 8144, 8345, 8364	28
Construction Site at Tseung Kwan O-Lam Tin Tunnel	7139, 7228, 7229, 7230, 7231, 7250, 7254, 7255, 7353, 7413, 7542, 7588, 7640, 7667, 7682, 7735, 7736, 7737, 7738, 7742, 7762, 7784, 7848, 7941, 8064, 8105, 8360, 8630, 9035	29
Fung Nin Building	7595, 7605, 7645, 7651, 7652, 7659, 7689, 7692, 7693, 7694, 7696, 7697, 7910, 8186	14
Residents of Unit 33/34, Ming Lai House, Choi Wan Estate	7140, 7527, 7708, 7709, 7755, 7767, 7821, 7859, 7893, 7897, 7906, 8054, 8180	13
Billy Sir Music Classroom	7639, 7657, 7685, 7686, 7702, 7814, 7865, 7866, 7871, 7873, 8050, 8078, 8088, 8103, 8346, 8471	16
Glow Salon and Spa	7354, 7467, 7494, 7495, 7698, 7765, 7793, 7853, 7965, 7992, 8142, 8143, 8158, 8159, 8160, 8206, 8311	17

Cluster related to the Hong Kong-Zhuhai-Macao Bridge (Hong Kong Boundary Crossing Facilities)	7192, 7488, 7506, 7589, 7719, 7726, 7881, 7887, 7924, 7988, 8047, 8239, 8529	13
Patient and Staff of United Christian Hospital Ward 2D	8375, 8376, 8377, 8512, 8514, 8540, 8542, 8545, 8546, 8547, 8562, 8563, 8604, 8623, 8624, 8625, 8626, 8632, 8633, 8777, 8848	21
Construction Site at Tseung Kwan O-Lam Tin Tunnel (second cluster)	8955, 8979, 8981, 8982, 8983, 8984, 8985, 8986, 8987, 8988, 8989, 8990, 9039, 9061, 9067, 9068, 9077, 9078, 9079, 9091, 9093, 9099, 9100, 9101, 9102, 9103, 9104, 9105, 9110, 9112, 9114, 9208, 9246, 9256, 9364, 9372, 9377, 9382, 9410, 9411, 9474, 9502, 9510, 9519, 9524, 9525, 9543, 9563, 9752, 9899	50
Cluster related to Central Kowloon Route (Central Tunnel)	9152, 9221, 9222, 9223, 9224, 9227, 9230, 9262, 9263, 9298, 9299, 9303, 9304, 9327, 9328, 9329, 9330, 9331, 9351, 9353, 9387, 9407, 9446, 9447, 9448, 9450, 9465, 9471, 9472, 9473, 9505, 9506, 9507, 9508, 9568, 9616, 9702	37
Residents of Unit 09, Yan Shek House, Shek Yam Estate	9319, 9362, 9363, 9386, 9415, 9435, 9462, 9463, 9468, 9663	10
Hung Hom 永明粥店	10043, 10110, 10162, 10170, 10192, 10193, 10194, 10219, 10256, 10295	10
Construction site at Hong Kong International Airport Third Runway	9928, 10126, 10252, 10253, 10321, 10348, 10382, 10386, 10389, 10390, 10392, 10418, 10425, 10450, 10452, 10493, 10494, 10495, 10500, 10501, 10523, 10540, 10564, 10574, 10590, 10596, 10597, 10598, 10626, 10632, 10660, 10861, 10862	33
Caritas Lok Yi School	10832, 10850, 10851, 10863, 10864, 10873, 10874, 10886, 10892, 10893, 10919, 11004	12
K11 Musea Mr. Ming's Chinese Dining/ Coast Seafood & Grill (Causeway Bay)	10912, 10915, 10916, 10917, 10921, 10922, 10924, 10929, 10932, 10937, 10938, 10939, 10940, 10941, 10942, 10945, 10948, 10950, 10951, 10960, 10961, 10962, 10963, 10966, 10968, 10969, 10970, 10972, 10973, 10974, 10977, 10978, 10979, 10982, 10983, 10984, 10989, 10991, 10994, 10996, 10997, 10999, 11000, 11001, 11002, 11005, 11015, 11017, 11018, 11020, 11028, 11043, 11100, 11115, 11119, 11122, 11126	57

URSUS Fitness (Sai Ying Pun)	11129, 11131, 11132, 11134, 11136, 11137, 11138, 11139, 11140, 11141, 11144, 11145, 11146, 11147, 11148, 11149, 11150, 11152, 11153, 11154, 11155, 11156, 11157, 11159, 11161, 11162, 11163, 11164, 11165, 11166, 11167, 11168, 11169, 11170, 11171, 11172, 11173, 11174, 11175, 11176, 11177, 11179, 11180, 11181, 11182, 11186, 11187, 11188, 11189, 11190, 11192, 11194, 11195, 11196, 11197, 11198, 11202, 11203, 11204, 11205, 11206, 11207, 11208, 11210, 11213, 11214, 11215, 11218, 11219, 11220, 11221, 11222, 11223, 11224, 11225, 11226, 11227, 11229, 11230, 11231, 11232, 11233, 11234, 11235, 11237, 11238, 11239, 11240, 11241, 11242, 11247, 11248, 11249, 11250, 11251, 11253, 11254, 11257, 11258, 11260, 11264, 11266, 11268, 11269, 11270, 11271, 11275, 11276, 11277, 11286, 11290, 11292, 11295, 11296, 11297, 11304, 11305, 11306, 11307, 11308, 11309, 11311, 11314, 11315, 11316, 11322, 11329, 11332, 11333, 11335, 11336, 11341, 11344, 11348, 11349, 11358, 11359, 11361, 11365, 11370, 11372, 11379, 11387, 11388, 11389, 11390, 11391, 11399, 11400, 11401, 11411, 11421, 11424, 11425, 11435	155
------------------------------	---	-----

\*Cases involved including confirmed close contacts with epidemiological linkage

(Last updated on 3 November 2021)