

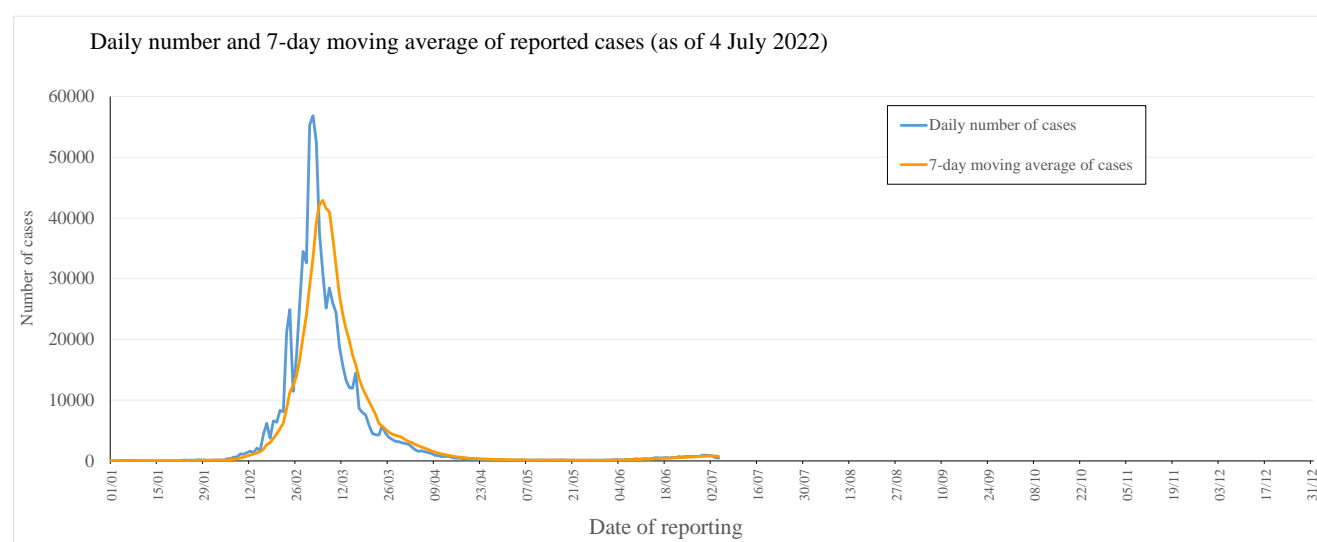
Latest situation of COVID-19 (as of 4 July 2022)

The Centre for Health Protection (CHP) of the Department of Health (DH) today (4 July) announced the latest epidemic situation of COVID-19. As of 0.00am, 4 July 2022, the CHP was investigating 1645 additional locally acquired cases tested positive for the SARS-CoV-2 virus, including 276 cases tested positive by nucleic acid tests and verified 1369 cases tested positive by rapid antigen tests (RATs) in the past 24 hours^{Note 1}. Separately, 196 additional imported cases were reported, including 183 cases tested positive by nucleic acid tests and 13 cases tested positive by RATs. So far, Hong Kong has recorded a total of 778913 and 475098 cases tested positive by nucleic acid tests and RATs respectively for the SARS-CoV-2 virus.

Since the 5th wave (31 December 2021), 766282 cases and 475098 cases were tested positive by nucleic acid tests and rapid antigen tests respectively.

In the recent 7-day period from 28 June to 4 July 2022, an average of 757.6 cases by nucleic acid tests were reported per day, as compared with 677.6 cases per day reported in the previous 7-day period from 21 to 27 June 2022 (Figure 1(i)).

Figure 1(i): Daily number and 7-day moving average of cases tested positive for SARS-CoV-2 virus by nucleic acid tests in 2022^{Note 2}



Note 1:

Starting from 7 June 2022, only cases reported via the "Declaration System for individuals tested positive for COVID-19 using Rapid Antigen Test" which had been verified with positive nucleic acid test results will be announced. These include RAT positive cases reported in the past few days.

Note 2:

- Re-positive cases are excluded in Figure 1(i).
- As announced by the Government on 15 February 2022 (https://www.news.gov.hk/eng/2022/02/20220215/20220215_172336_940.html?type=category&name=covid19&title=) and 25 February 2022 (<https://www.info.gov.hk/gia/general/202202/25/P2022022500816.htm>), positive cases detected by the Hospital Authority and testing contractors are now directly deemed as confirmed cases.

Figure 1(ii): Daily number and 7-day moving average of cases tested positive for SARS-CoV-2 virus by rapid antigen tests

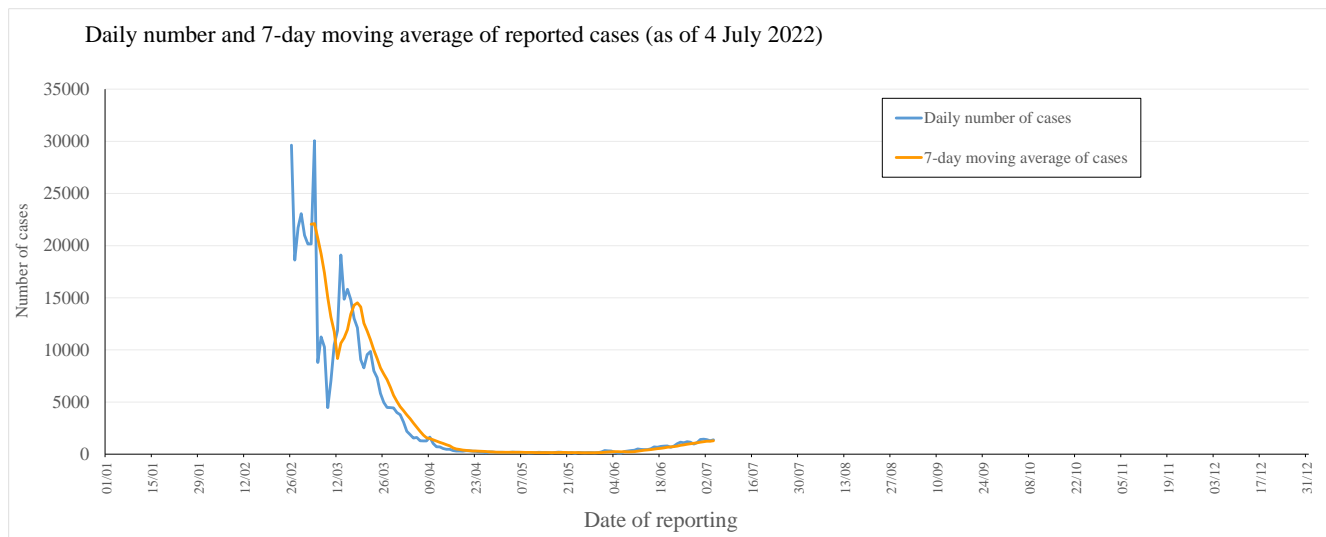
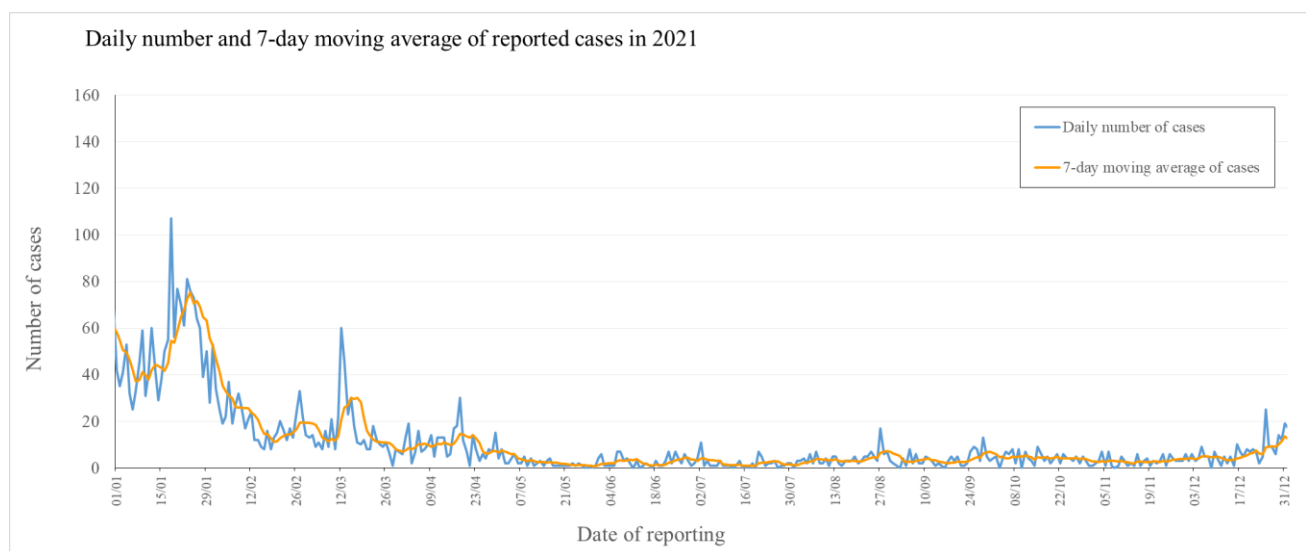
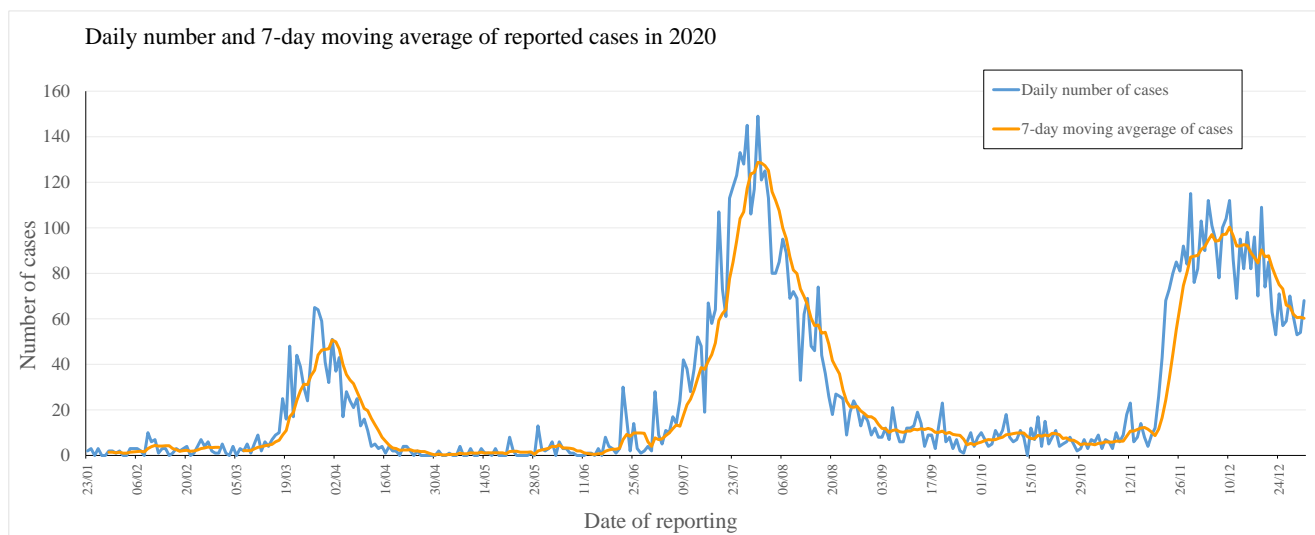


Figure 1(iii): Daily number and 7-day moving average of cases tested positive for SARS-CoV-2 virus by nucleic acid tests in 2021



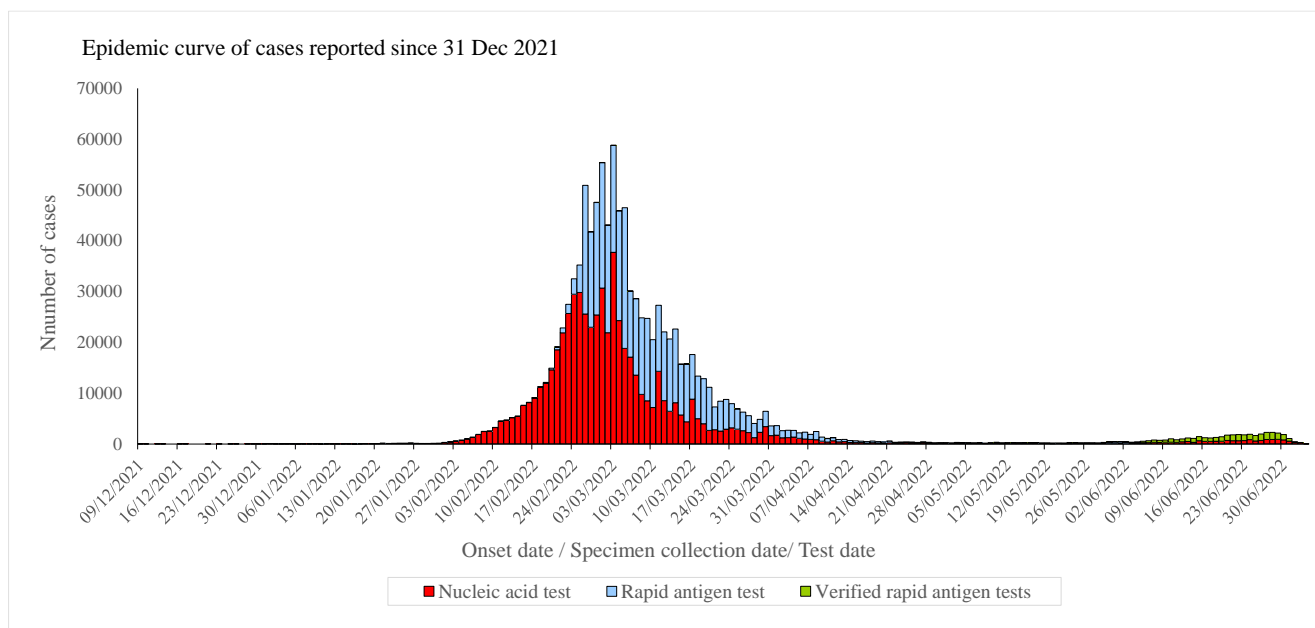
Note: Re-positive cases are excluded in Figure 1(iii).

Figure 1(iv): Daily number and 7-day moving average of cases tested positive for SARS-CoV-2 virus by nucleic acid tests in 2020



Note: Re-positive cases are excluded in Figure 1(iv).

Figure 2: Epidemic curve of cases tested positive for SARS-CoV-2 virus in Hong Kong since 31 December 2021



Note:

1. Specimen collection dates are used for cases without information of onset dates.
2. Cases still under investigation are excluded in Figure 2.

Figure 3: Daily number of cases tested positive for SARS-CoV-2 virus reported

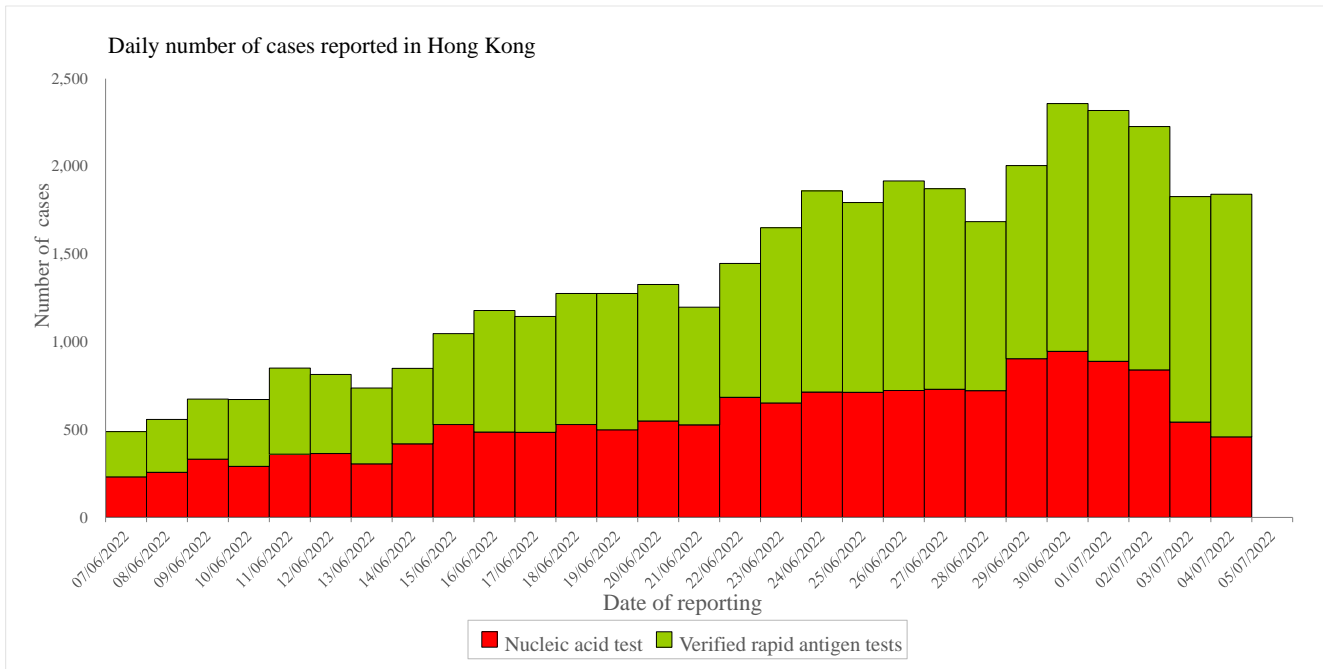


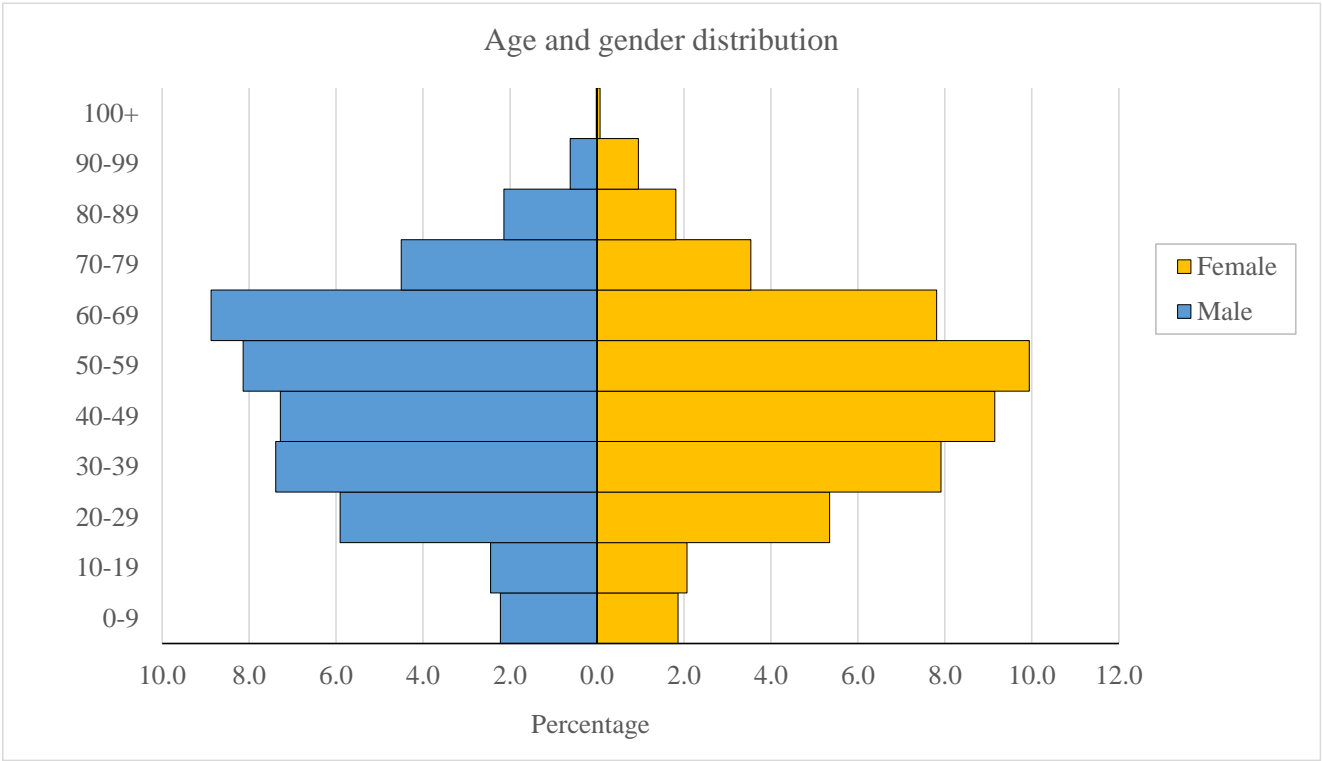
Table 1 shows the classification of cases reported since the 5th wave (since 31 December 2021).

Table 1: Number of cases tested positive for SARS-CoV-2 virus by nucleic acid tests and rapid antigen tests by classification

Reporting period	Imported case	Locally acquired case	Period total
Since the 5th wave	5938 (0.48%)	1235442 (99.52%)	1241380 (100.00%)
In the past 4 weeks			
7/6/2022 - 13/6/2022	530 (11.05%)	4265 (88.95%)	4795 (100.00%)
14/6/2022 - 20/6/2022	769 (9.49%)	7330 (90.51%)	8099 (100.00%)
21/6/2022 - 27/6/2022	900 (7.67%)	10839 (92.33%)	11739 (100.00%)
28/6/2022 - 4/7/2022	1108 (7.77%)	13153 (92.23%)	14261 (100.00%)

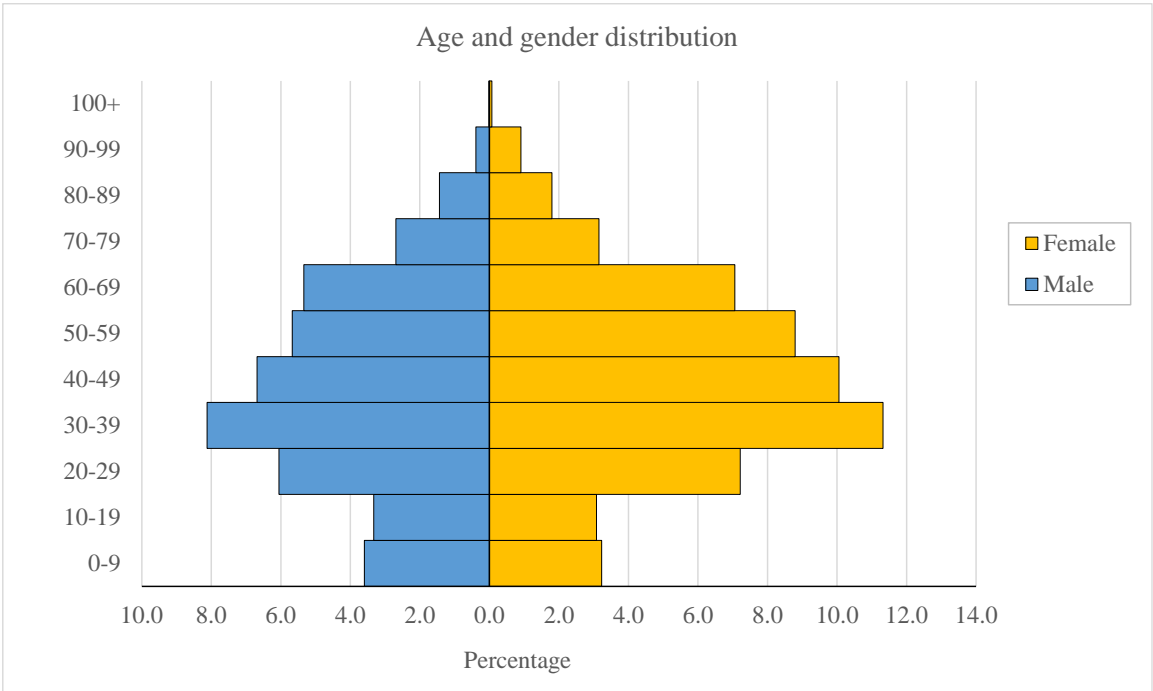
Figure 4 shows the age and gender distribution of the cases (since the 5th wave).

Figure 4(i): Age and gender distribution of cases tested positive for SARS-CoV-2 virus by nucleic acid tests in Hong Kong



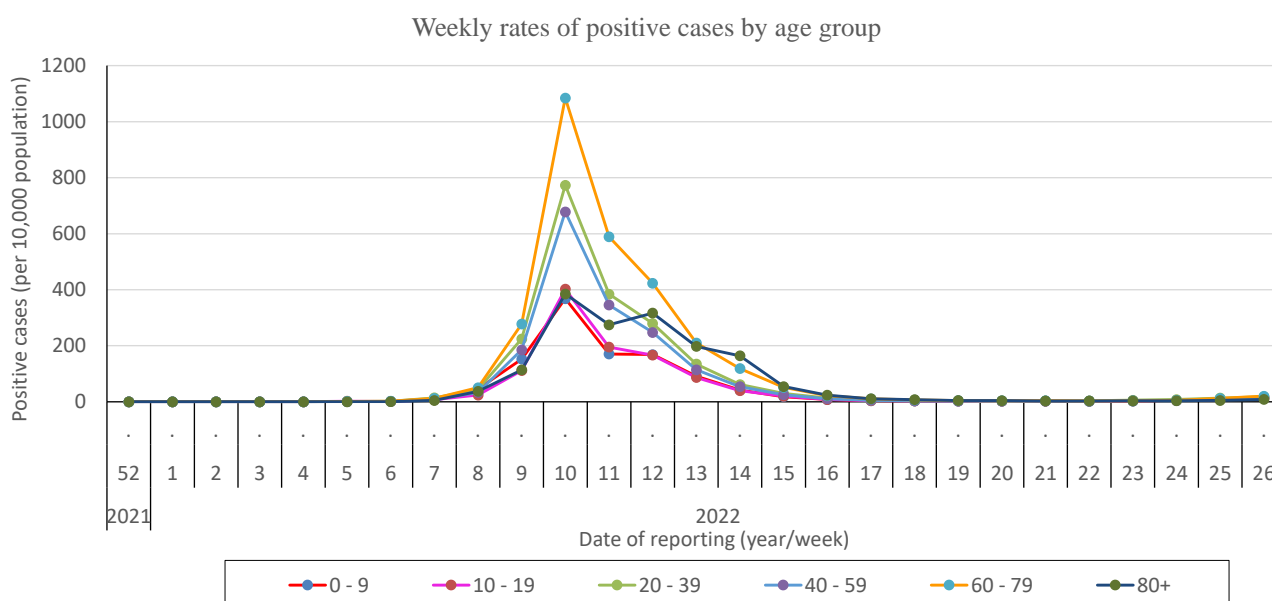
Note: Re-positive cases and cases pending investigation are excluded in Figure 4(i).

Figure 4(ii): Age and gender distribution of cases tested positive for SARS-CoV-2 virus by rapid antigen tests in Hong Kong



Source of data: Data from the Centre for Health Protection of the Department of Health with available information on age and gender.

Figure 5: Weekly rates of positive cases tested by nucleic acid tests and rapid antigen tests (by age group) since the 5th wave



Note:

1. Imported cases are excluded in Figure 5.
2. Data in Figure 5 are updated up to week 26 (week ending on 25 Jun 2022).
3. Data in Figure 5 will be updated on every Tuesday.

Table 2 : Incidences of cases tested positive for SARS-CoV-2 virus by nucleic acid tests and rapid antigen tests by residential districts in 2022

Region	Cumulative Incidence	District	Cumulative Incidence	Mar	Apr	May	Jun
Hong Kong	772.9	Central and Western	658.1	454.5	26.4	12.3	44.2
		Wan Chai	574.1	385.4	22.7	8.1	40.3
		Eastern	830.4	645.9	41.2	8.1	27.5
		Southern	888.0	662.0	43.0	7.3	31.2
Kowloon	1184.6	Kowloon City	897.0	626.7	32.9	7.2	27.8
		Kwun Tong	1309.7	1048.6	52.3	8.3	21.2
		Sham Shui Po	1191.0	862.1	38.8	9.8	19.9
		Wong Tai Sin	1325.7	1029.8	62.2	6.7	17.0
		Yau Tsim Mong	1097.3	684.2	23.8	9.1	31.1
New Territories East	941.3	Islands	806.1	544.2	34.1	7.8	29.2
		North	974.1	736.7	67.1	12.2	24.8
		Sai Kung	831.2	633.8	37.0	9.8	28.0
		Sha Tin	1058.7	769.8	65.9	9.7	25.0
		Tai Po	901.0	683.5	51.3	8.8	30.5
New Territories West	1114.8	Kwai Tsing	1285.2	1024.4	54.1	9.1	17.8
		Tsuen Wan	960.1	744.8	42.6	11.7	26.8
		Tuen Mun	1193.8	933.0	61.0	8.3	24.8
		Yuen Long	1003.8	696.4	42.3	8.9	23.9

Note:

1. Cases with multiple/ pending/ unknown residential address are excluded in Table 2.
2. Data in Table 2 are shown as number of cases per 10,000 population.
3. Table 2 will be updated on every Tuesday. Data shown in the table are as of 25 Jun 2022.

Since 31 December 2019, the CHP of the DH has recorded a total of 9405 fatal cases.

Since the 5th wave, a total of 9192 fatal cases have been recorded.

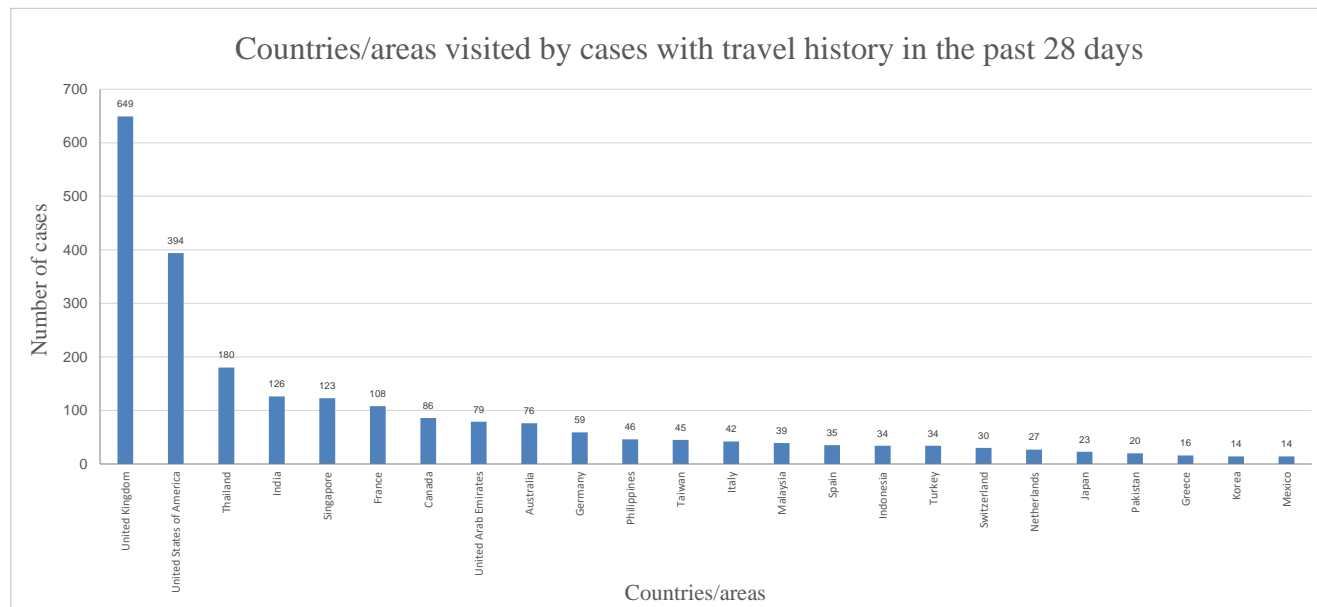
Table 3: Case fatality rate (CFR) by age group and vaccination status (since the 5th wave)

Age Group	CFR of locally acquired cases	CFR of locally acquired cases with history of at least 2 doses of COVID-19 vaccine	CFR of locally acquired cases with history of 1 dose of COVID-19 vaccine or unvaccinated
0-9	0.01%	0.00%	0.01%
10-19	0.01%	0.00%	0.01%
20-29	0.01%	0.01%	0.03%
30-39	0.01%	0.00%	0.04%
40-49	0.03%	0.01%	0.13%
50-59	0.12%	0.04%	0.54%
60-69	0.42%	0.11%	1.29%
70-79	1.76%	0.46%	3.62%
80+	10.24%	3.32%	13.27%
Overall	0.75%	0.13%	2.23%

Source of data: Data from the Centre for Health Protection of the Department of Health with available information on age and vaccination status.

Figure 6 shows the countries/areas visited by the cases tested positive by nucleic acid tests reported in the past 4 weeks with travel history outside Hong Kong during the incubation period.

Figure 6: Countries/areas visited by cases tested positive by nucleic acid tests reported in the past 4 weeks with travel history



Note:

1. Some cases had visited more than one country/area.
2. Re-positive cases are excluded in Figure 6.
3. Only countries/ areas visited by 10 or more cases are included in Figure 6.