

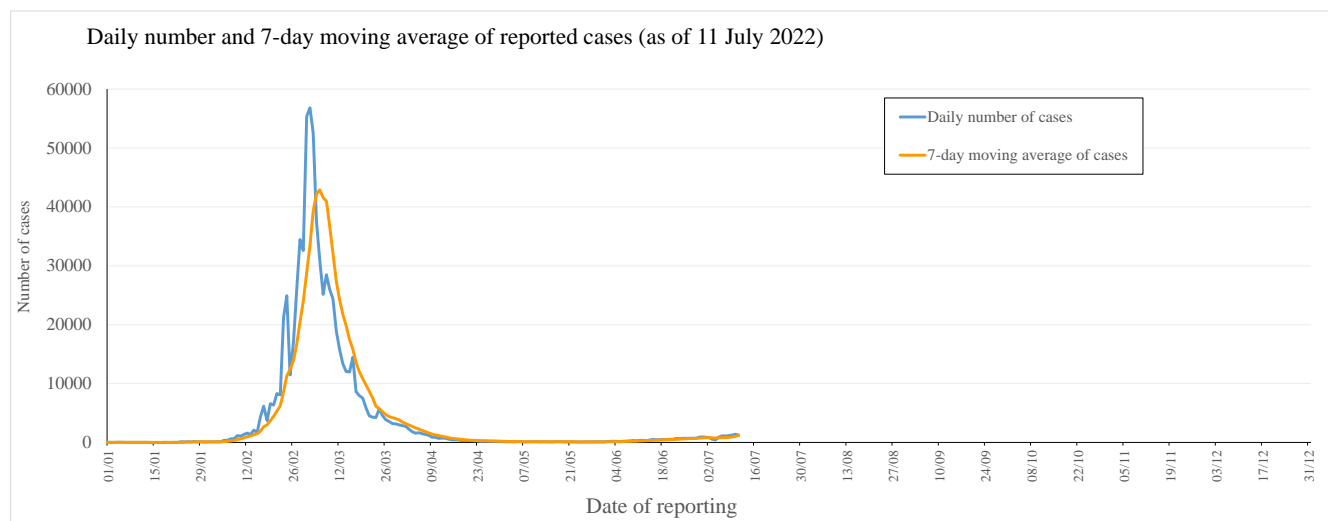
## **Latest situation of COVID-19 (as of 11 July 2022)**

The Centre for Health Protection (CHP) of the Department of Health (DH) today (11 July) announced the latest epidemic situation of COVID-19. As of 0.00am, 11 July 2022, the CHP was investigating 2611 additional locally acquired cases tested positive for the SARS-CoV-2 virus, including 1066 cases tested positive by nucleic acid tests and verified 1545 cases tested positive by rapid antigen tests (RATs) in the past 24 hours<sup>Note 1</sup>. Separately, 252 additional imported cases were reported, including 199 cases tested positive by nucleic acid tests and 53 cases tested positive by RATs. So far, Hong Kong has recorded a total of 787142 and 486775 cases tested positive by nucleic acid tests and RATs respectively for the SARS-CoV-2 virus.

Since the 5th wave (31 December 2021), 774511 cases and 486775 cases were tested positive by nucleic acid tests and rapid antigen tests respectively.

In the recent 7-day period from 5 to 11 July 2022, an average of 1175.6 cases by nucleic acid tests were reported per day, as compared with 757.6 cases per day reported in the previous 7-day period from 28 June to 4 July 2022 (Figure 1(i)).

**Figure 1(i): Daily number and 7-day moving average of cases tested positive for SARS-CoV-2 virus by nucleic acid tests in 2022**<sup>Note 2</sup>



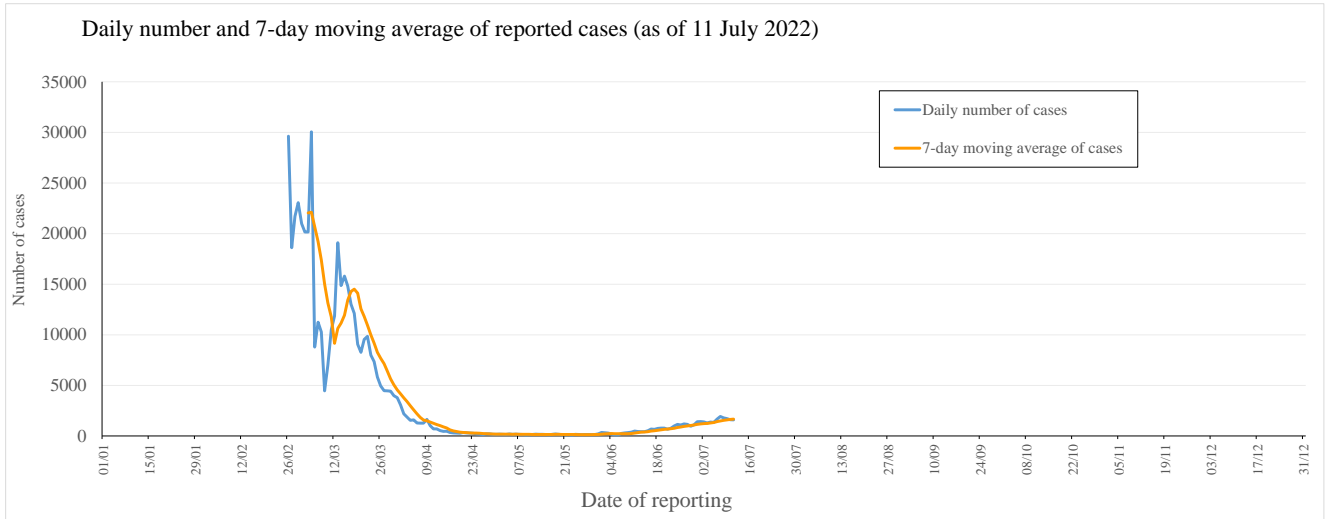
**Note 1:**

Starting from 7 June 2022, only cases reported via the "Declaration System for individuals tested positive for COVID-19 using Rapid Antigen Test" which had been verified with positive nucleic acid test results will be announced. These include RAT positive cases reported in the past few days.

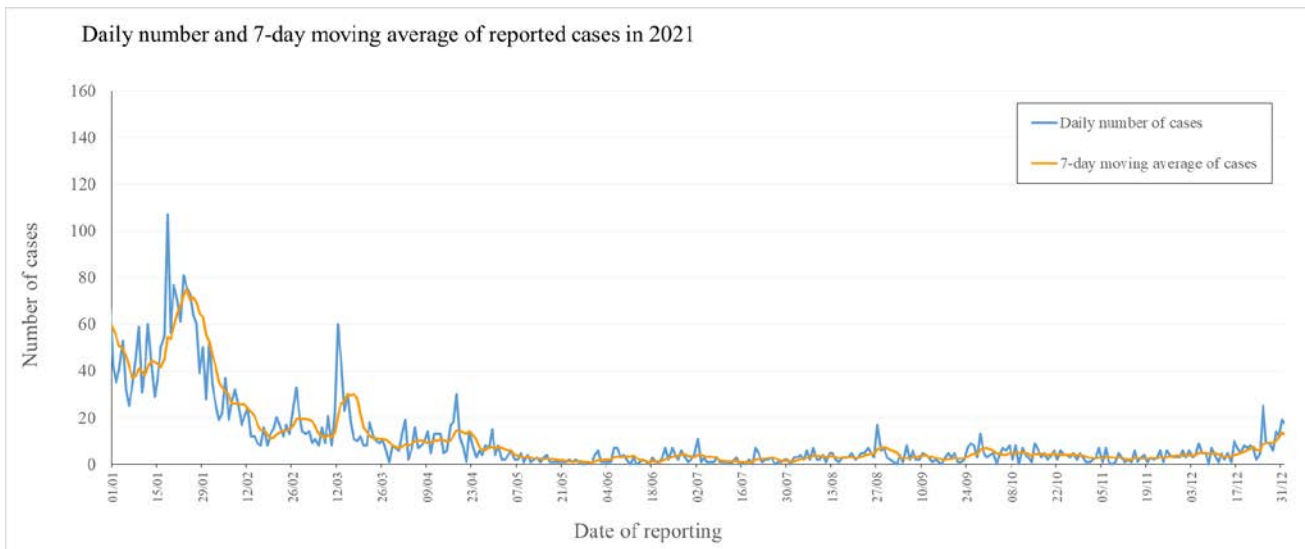
**Note 2:**

- Re-positive cases are excluded in Figure 1(i).
- As announced by the Government on 15 February 2022 ([https://www.news.gov.hk/eng/2022/02/20220215/20220215\\_172336\\_940.html?type=category&name=covid19&title=](https://www.news.gov.hk/eng/2022/02/20220215/20220215_172336_940.html?type=category&name=covid19&title=)) and 25 February 2022 (<https://www.info.gov.hk/gia/general/202202/25/P2022022500816.htm>), positive cases detected by the Hospital Authority and testing contractors are now directly deemed as confirmed cases.

**Figure 1(ii): Daily number and 7-day moving average of cases tested positive for SARS-CoV-2 virus by rapid antigen tests**

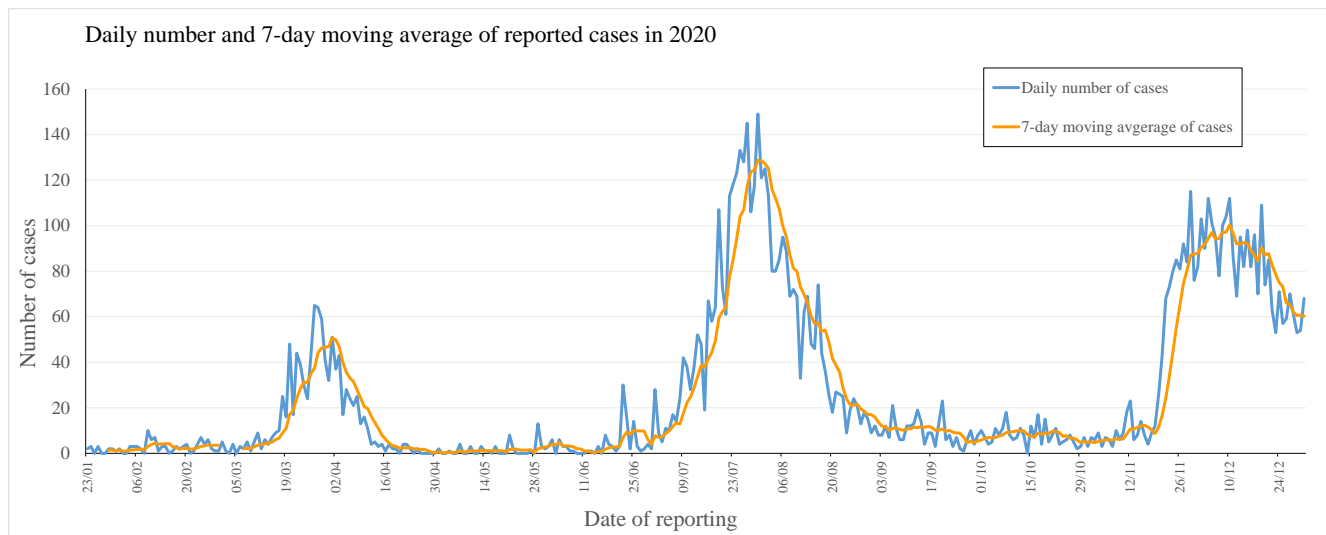


**Figure 1(iii): Daily number and 7-day moving average of cases tested positive for SARS-CoV-2 virus by nucleic acid tests in 2021**



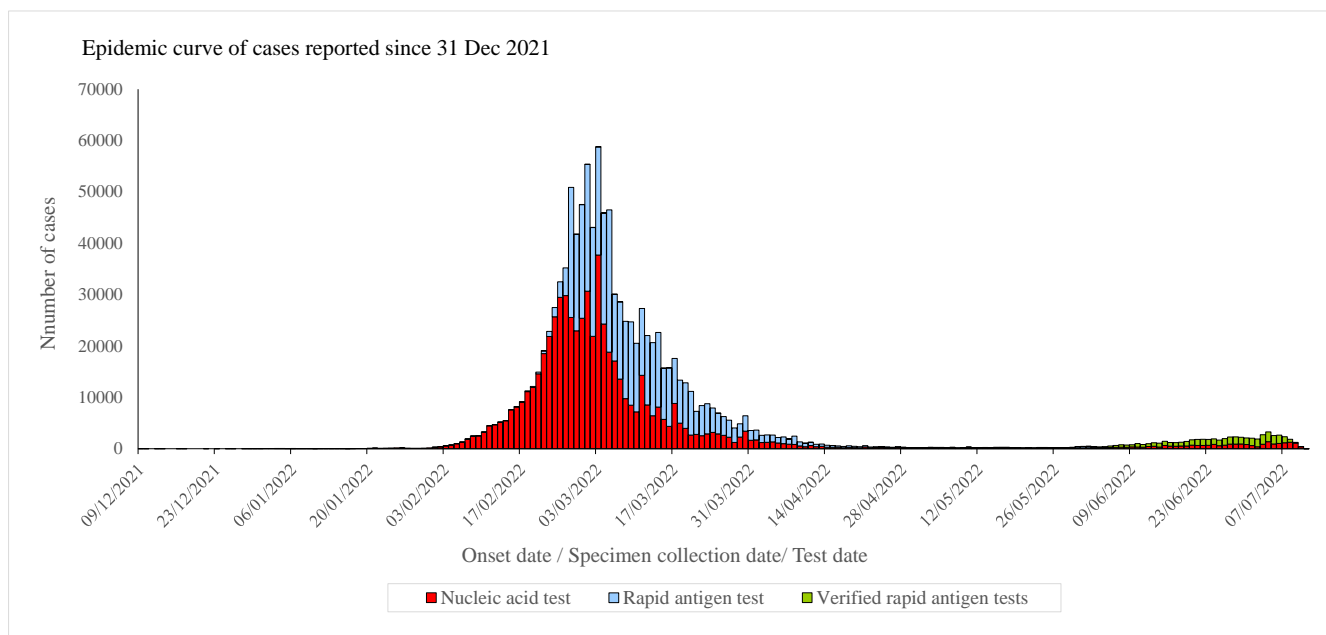
Note: Re-positive cases are excluded in Figure 1(iii).

**Figure 1(iv): Daily number and 7-day moving average of cases tested positive for SARS-CoV-2 virus by nucleic acid tests in 2020**



Note: Re-positive cases are excluded in Figure 1(iv).

**Figure 2: Epidemic curve of cases tested positive for SARS-CoV-2 virus in Hong Kong since 31 December 2021**



Note:

1. Specimen collection dates are used for cases without information of onset dates.
2. Cases still under investigation are excluded in Figure 2.

**Figure 3: Daily number of cases tested positive for SARS-CoV-2 virus reported in the past 4 weeks**

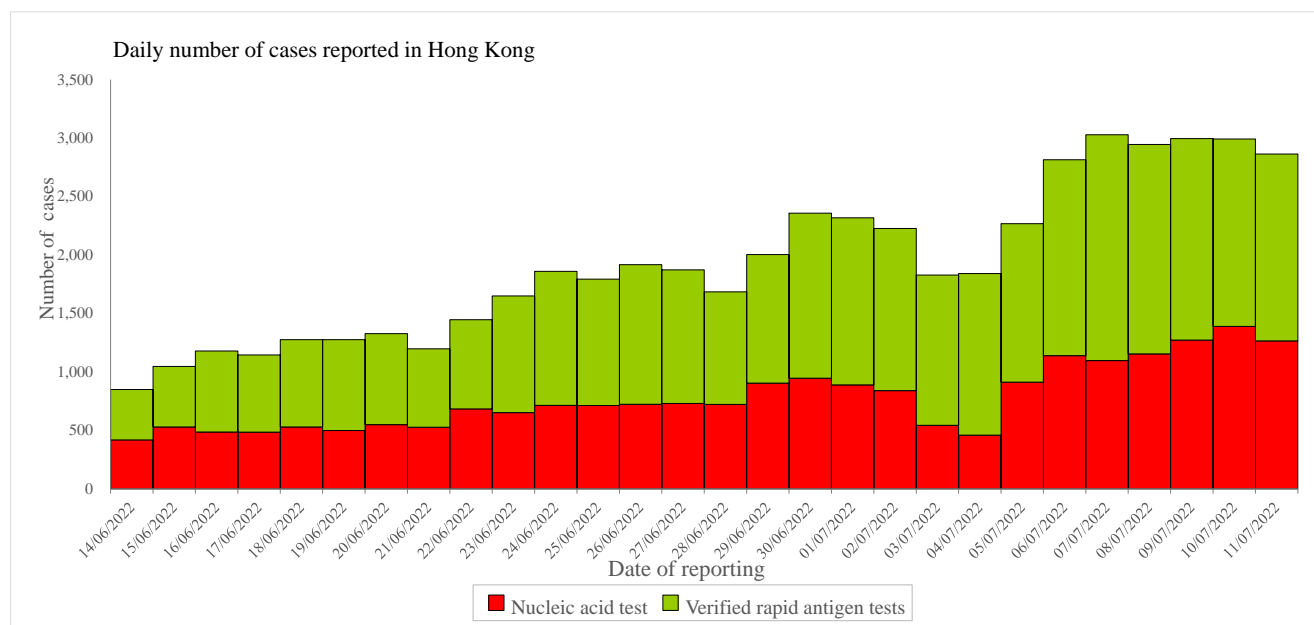


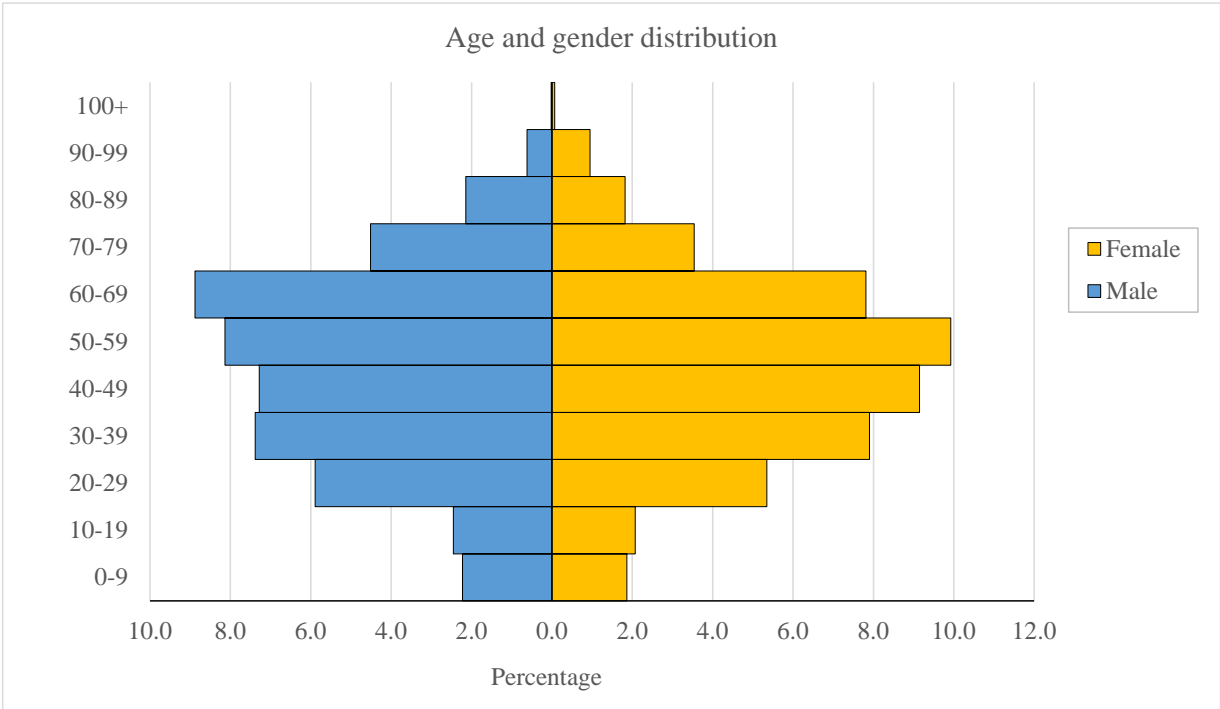
Table 1 shows the classification of cases reported since the 5<sup>th</sup> wave (since 31 December 2021).

**Table 1: Number of cases tested positive for SARS-CoV-2 virus by nucleic acid tests and rapid antigen tests by classification**

Reporting period	Imported case	Locally acquired case	Period total
Since the 5th wave	7307 (0.58%)	1253979 (99.42%)	1261286 (100.00%)
In the past 4 weeks			
14/6/2022 - 20/6/2022	769 (9.49%)	7330 (90.51%)	8099 (100.00%)
21/6/2022 - 27/6/2022	899 (7.66%)	10840 (92.34%)	11739 (100.00%)
28/6/2022 - 4/7/2022	1108 (7.77%)	13153 (92.23%)	14261 (100.00%)
5/7/2022 - 11/7/2022	1370 (6.88%)	18536 (93.12%)	19906 (100.00%)

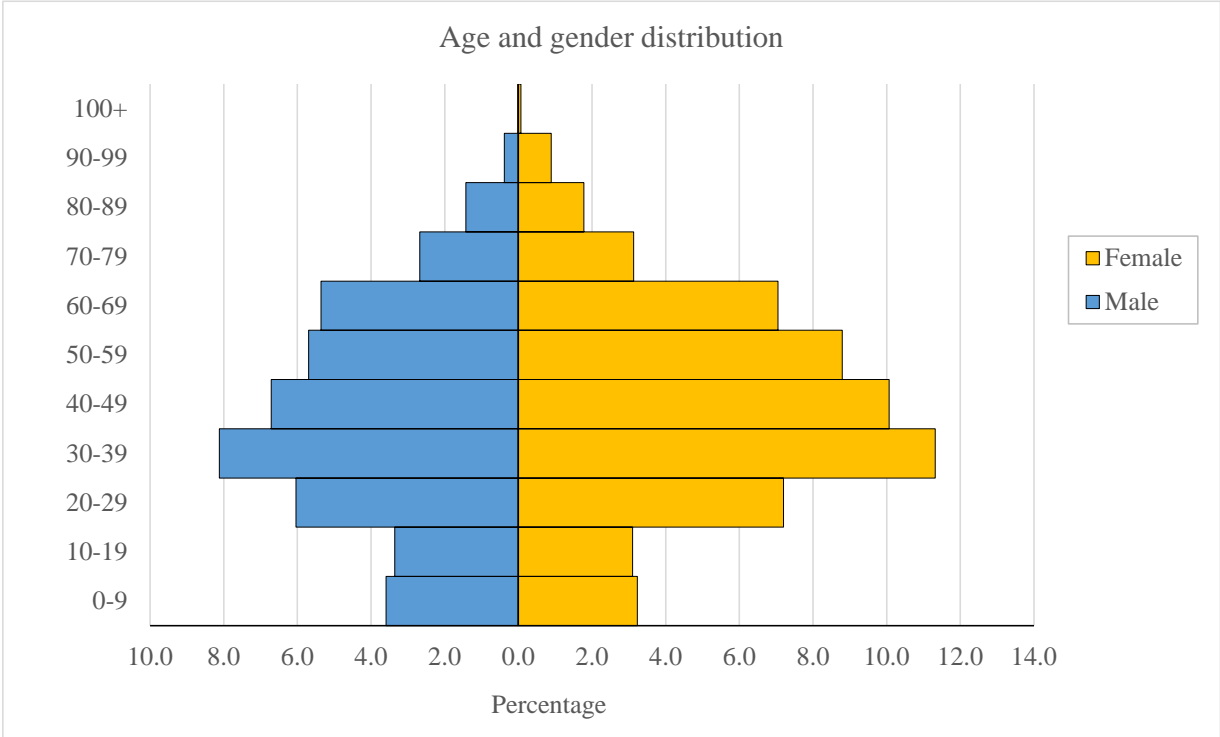
Figure 4 shows the age and gender distribution of the cases (since the 5<sup>th</sup> wave).

**Figure 4(i): Age and gender distribution of cases tested positive for SARS-CoV-2 virus by nucleic acid tests in Hong Kong**



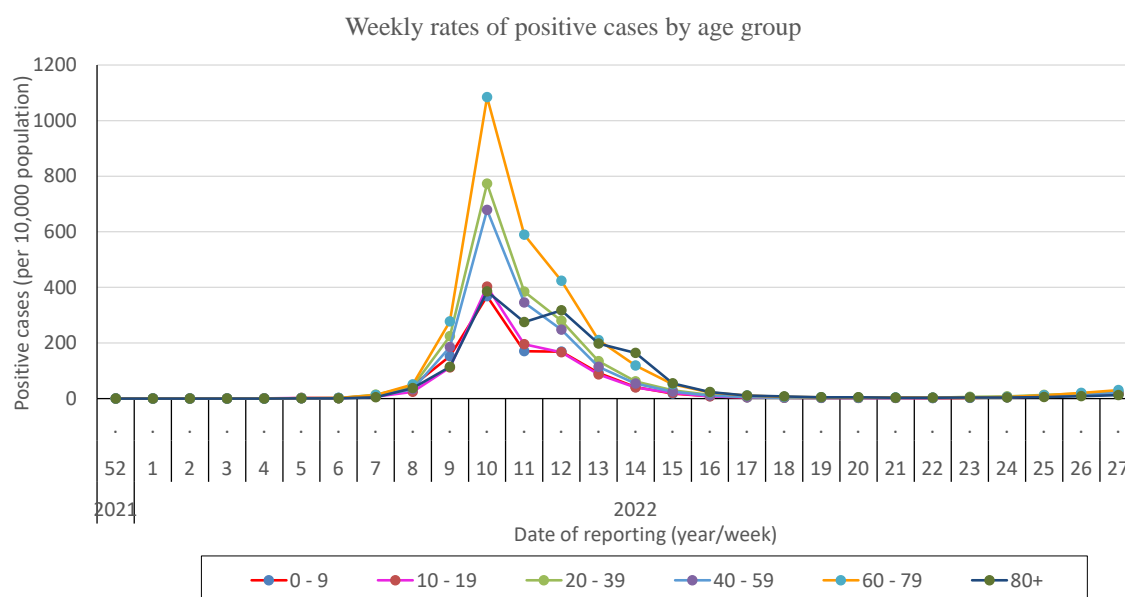
Note: Re-positive cases and cases pending investigation are excluded in Figure 4(i).

**Figure 4(ii): Age and gender distribution of cases tested positive for SARS-CoV-2 virus by rapid antigen tests in Hong Kong**



Source of data: Data from the Centre for Health Protection of the Department of Health with available information on age and gender.

**Figure 5: Weekly rates of positive cases tested by nucleic acid tests and rapid antigen tests (by age group) since the 5<sup>th</sup> wave**



Note:

1. Imported cases are excluded in Figure 5.
2. Data in Figure 5 are updated up to week 27 (week ending on 2 Jul 2022).
3. Data in Figure 5 will be updated on every Tuesday.

**Table 2 : Incidences of cases tested positive for SARS-CoV-2 virus by nucleic acid tests and rapid antigen tests by residential districts in 2022**

Region	Cumulative Incidence	District	Cumulative Incidence	Mar	Apr	May	Jun
Hong Kong	791.1	Central and Western	674.8	454.5	26.5	12.3	60.9
		Wan Chai	592.5	385.4	22.7	8.1	58.7
		Eastern	847.9	646.0	41.2	8.1	44.9
		Southern	908.6	662.1	43.0	7.3	51.7
Kowloon	1198.0	Kowloon City	910.7	626.7	32.9	7.2	41.5
		Kwun Tong	1324.2	1048.7	52.3	8.3	35.5
		Sham Shui Po	1203.1	862.2	38.8	9.8	31.9
		Wong Tai Sin	1338.8	1029.9	62.2	6.7	30.1
		Yau Tsim Mong	1110.4	684.3	23.8	9.1	44.1
New Territories East	961.0	Islands	823.9	544.2	34.1	7.8	47.0
		North	993.4	736.8	67.1	12.2	44.0
		Sai Kung	848.1	633.9	37.0	9.8	44.7
		Sha Tin	1076.2	769.8	65.9	9.7	42.4
		Tai Po	931.7	683.6	51.3	8.8	61.1
New Territories West	1130.5	Kwai Tsing	1297.2	1024.5	54.1	9.1	29.6
		Tsuen Wan	977.4	744.9	42.6	11.7	44.1
		Tuen Mun	1211.0	933.0	61.0	8.3	42.0
		Yuen Long	1020.4	696.4	42.3	8.9	40.4

Note:

1. Cases with multiple/ pending/ unknown residential address are excluded in Table 2.
2. Data in Table 2 are shown as number of cases per 10,000 population.
3. Table 2 will be updated on every Tuesday. Data shown in the table are as of 2 Jul 2022.

**Table 3 : Number of cases tested positive for SARS-CoV-2 virus reported  
among schools in the past 4 weeks**

Reporting Period	No. of schools with case(s) reported	No. tested positive reported by schools	
		Student	Staff
05/06/2022 - 11/06/2022	348	412	129
12/06/2022 - 18/06/2022	485	628	206
19/06/2022 - 25/06/2022	636	929	203
26/06/2022 - 02/07/2022	652	875	182

Note:

1. Number of schools is deduplicated based on the reporting week.
2. Data in Table 3 are updated up to week 27 (week ending on 2 Jul 2022).
3. Data in Table 3 will be updated on every Tuesday.

**Table 4 : Number of cases tested positive for SARS-CoV-2 virus reported  
among residential care homes (RCHs) in the past 4 weeks**

Reporting Period	No. of RCHs with case(s) reported	No. tested positive reported by RCHs	
		Resident	Staff
05/06/2022 - 11/06/2022	9	0	9
12/06/2022 - 18/06/2022	15	18	12
19/06/2022 - 25/06/2022	22	34	21
26/06/2022 - 02/07/2022	21	14	14

Note:

1. Number of RCHs is deduplicated based on the reporting week.
2. Data in Table 4 are updated up to week 27 (week ending on 2 Jul 2022).
3. Data in Table 4 will be updated on every Tuesday.

Since 31 December 2019, the CHP of the DH has recorded a total of 9419 fatal cases.

Since the 5<sup>th</sup> wave, a total of 9206 fatal cases have been recorded.

**Table 5: Case fatality rate (CFR) by age group and vaccination status (since the 5<sup>th</sup> wave)**

<b>Age Group</b>	<b>CFR of locally acquired cases</b>	<b>CFR of locally acquired cases with history of at least 2 doses of COVID-19 vaccine</b>	<b>CFR of locally acquired cases with history of 1 dose of COVID-19 vaccine or unvaccinated</b>
<b>0-9</b>	0.01%	0.00%	0.01%
<b>10-19</b>	0.01%	0.00%	0.01%
<b>20-29</b>	0.01%	0.01%	0.03%
<b>30-39</b>	0.01%	0.00%	0.04%
<b>40-49</b>	0.03%	0.01%	0.13%
<b>50-59</b>	0.12%	0.04%	0.54%
<b>60-69</b>	0.42%	0.11%	1.29%
<b>70-79</b>	1.75%	0.46%	3.61%
<b>80+</b>	10.17%	3.27%	13.25%
<b>Overall</b>	<b>0.74%</b>	<b>0.13%</b>	<b>2.23%</b>

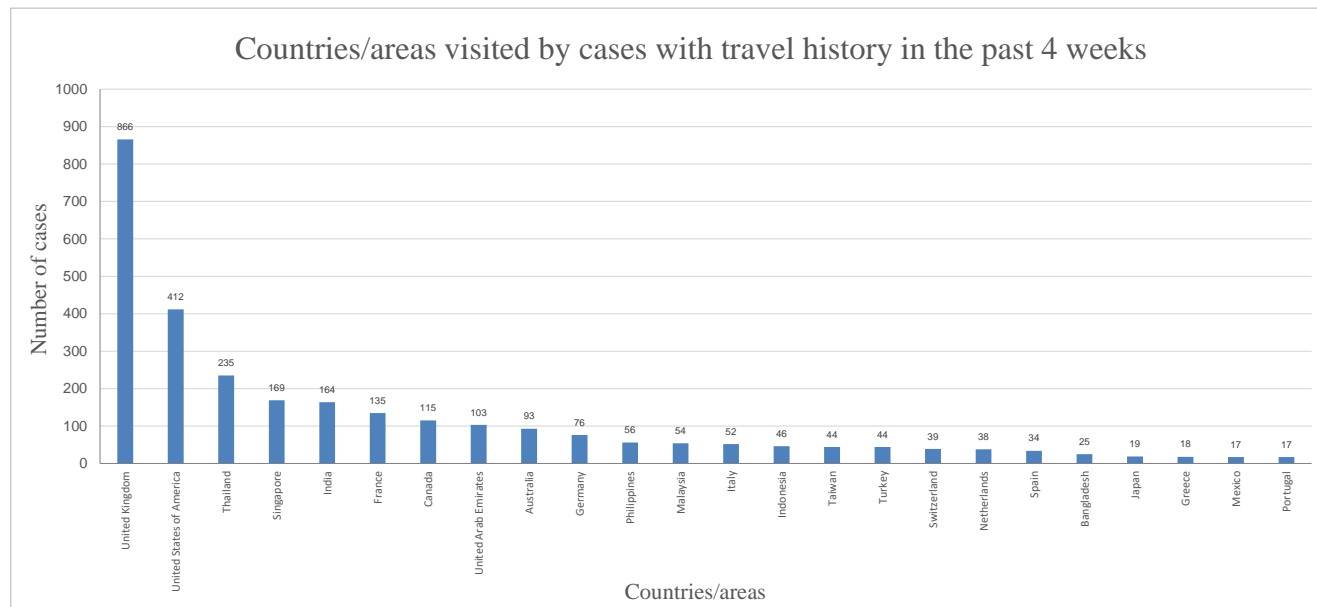
Source of data: Data from the Centre for Health Protection of the Department of Health with available information on age and vaccination status.

Note: Table 5 will be updated on every Tuesday.



Figure 6 shows the countries/areas visited by the cases tested positive by nucleic acid tests reported in the past 4 weeks with travel history outside Hong Kong during the incubation period.

**Figure 6: Countries/areas visited by cases tested positive by nucleic acid tests reported in the past 4 weeks with travel history**



Note:

1. Some cases had visited more than one country/area.
2. Re-positive cases are excluded in Figure 6.
3. Only countries/ areas visited by 10 or more cases are included in Figure 6.