

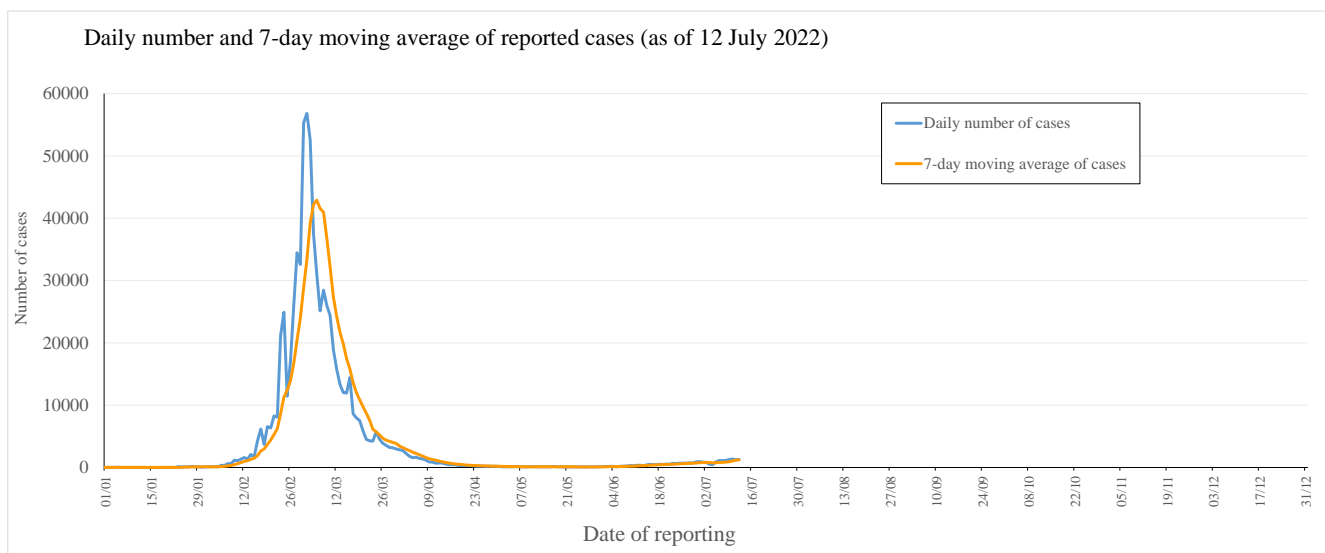
Latest situation of COVID-19 (as of 12 July 2022)

The Centre for Health Protection (CHP) of the Department of Health (DH) today (12 July) announced the latest epidemic situation of COVID-19. As of 0.00am, 12 July 2022, the CHP was investigating 2558 additional locally acquired cases tested positive for the SARS-CoV-2 virus, including 1103 cases tested positive by nucleic acid tests and verified 1455 cases tested positive by rapid antigen tests (RATs) in the past 24 hours^{Note 1}. Separately, 211 additional imported cases were reported, including 200 cases tested positive by nucleic acid tests and 11 cases tested positive by RATs. So far, Hong Kong has recorded a total of 788445 and 488241 cases tested positive by nucleic acid tests and RATs respectively for the SARS-CoV-2 virus.

Since the 5th wave (31 December 2021), 775814 cases and 488241 cases were tested positive by nucleic acid tests and rapid antigen tests respectively.

In the recent 7-day period from 6 to 12 July 2022, an average of 1231.3 cases by nucleic acid tests were reported per day, as compared with 784.9 cases per day reported in the previous 7-day period from 29 June to 5 July 2022 (Figure 1(i)).

Figure 1(i): Daily number and 7-day moving average of cases tested positive for SARS-CoV-2 virus by nucleic acid tests in 2022^{Note 2}



Note 1:

Starting from 7 June 2022, only cases reported via the "Declaration System for individuals tested positive for COVID-19 using Rapid Antigen Test" which had been verified with positive nucleic acid test results will be announced. These include RAT positive cases reported in the past few days.

Note 2:

- Re-positive cases are excluded in Figure 1(i).
- As announced by the Government on 15 February 2022 (https://www.news.gov.hk/eng/2022/02/20220215/20220215_172336_940.html?type=category&name=covid19&title=) and 25 February 2022 (<https://www.info.gov.hk/gia/general/2022/02/25/P2022022500816.htm>), positive cases detected by the Hospital Authority and testing contractors are now directly deemed as confirmed cases.

Figure 1(ii): Daily number and 7-day moving average of cases tested positive for SARS-CoV-2 virus by rapid antigen tests

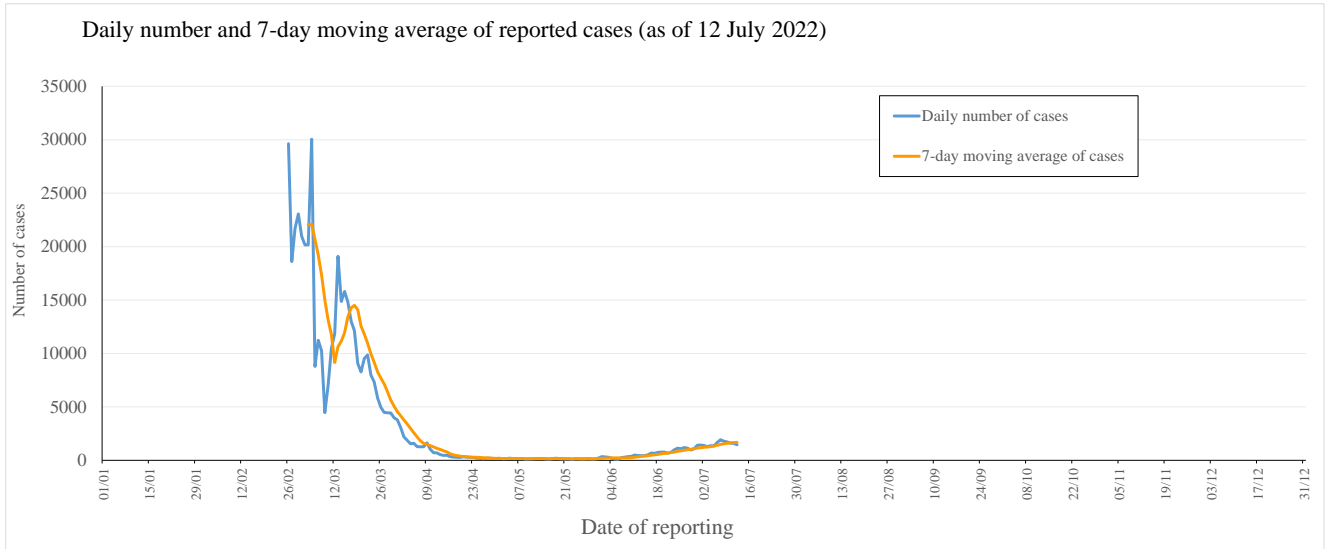
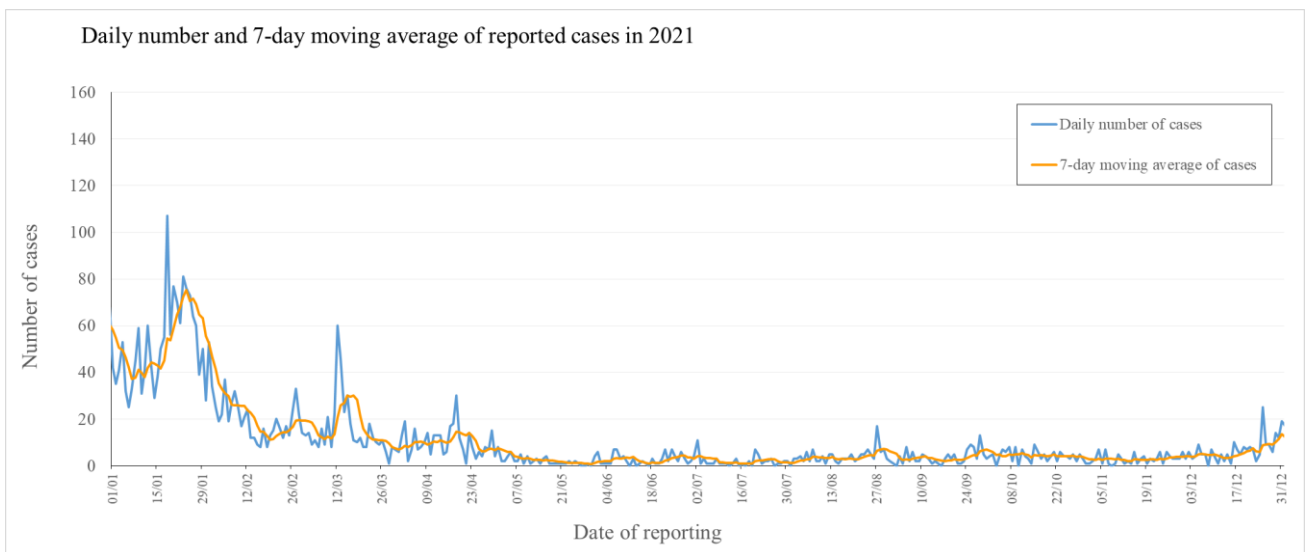
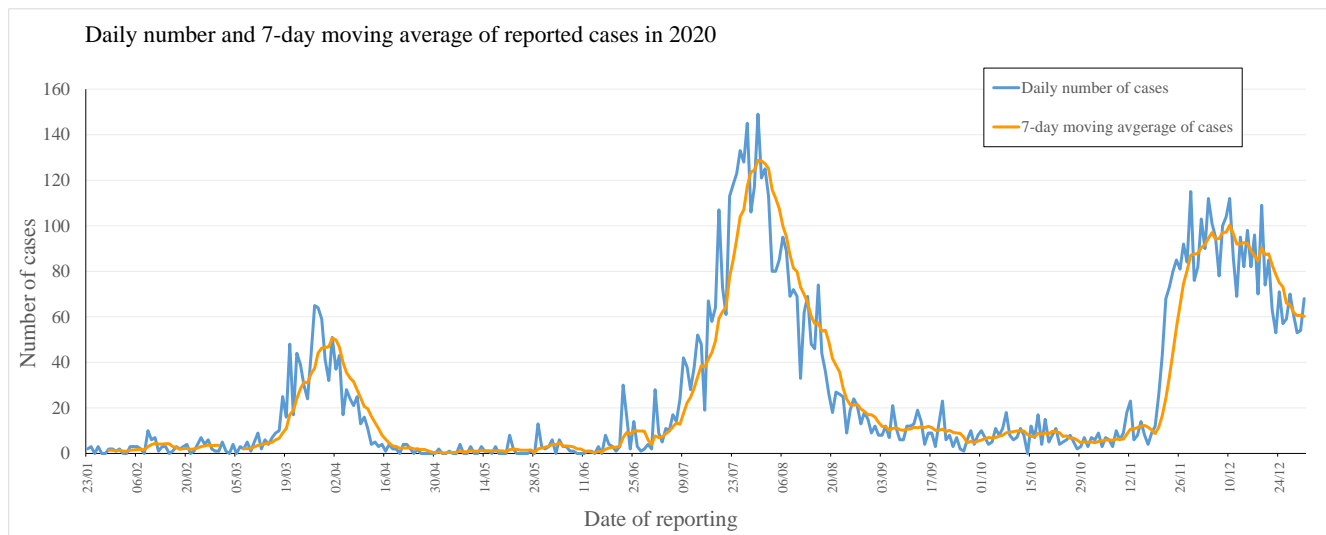


Figure 1(iii): Daily number and 7-day moving average of cases tested positive for SARS-CoV-2 virus by nucleic acid tests in 2021



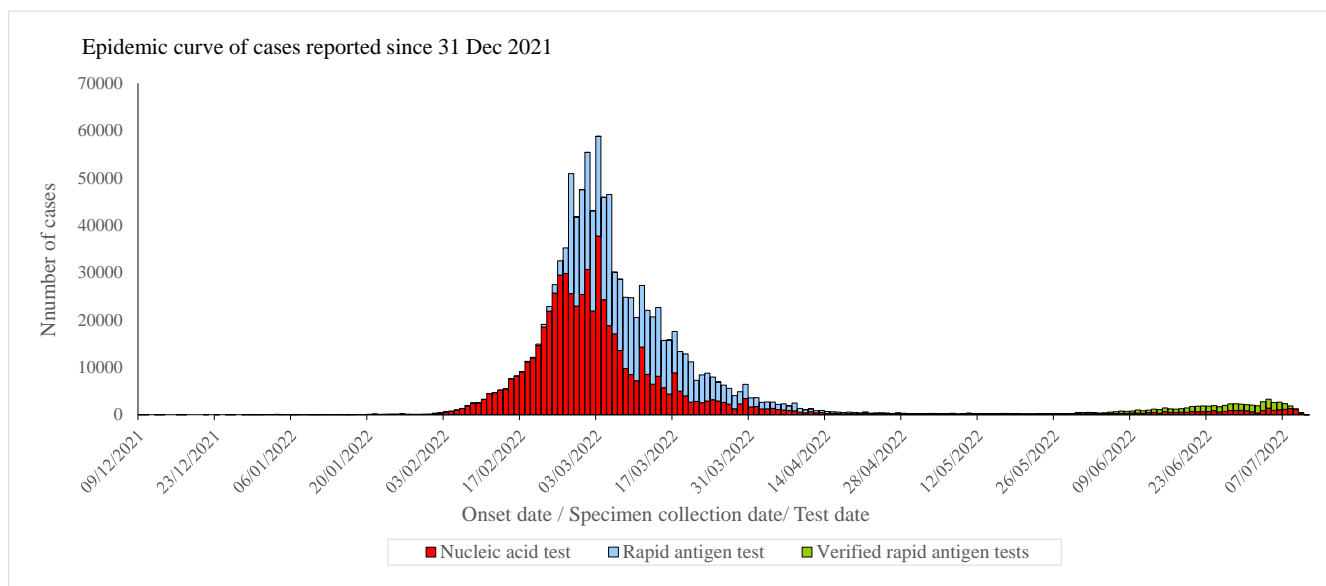
Note: Re-positive cases are excluded in Figure 1(iii).

Figure 1(iv): Daily number and 7-day moving average of cases tested positive for SARS-CoV-2 virus by nucleic acid tests in 2020



Note: Re-positive cases are excluded in Figure 1(iv).

Figure 2: Epidemic curve of cases tested positive for SARS-CoV-2 virus in Hong Kong since 31 December 2021



Note:

1. Specimen collection dates are used for cases without information of onset dates.
2. Cases still under investigation are excluded in Figure 2.

Figure 3: Daily number of cases tested positive for SARS-CoV-2 virus reported in the past 4 weeks

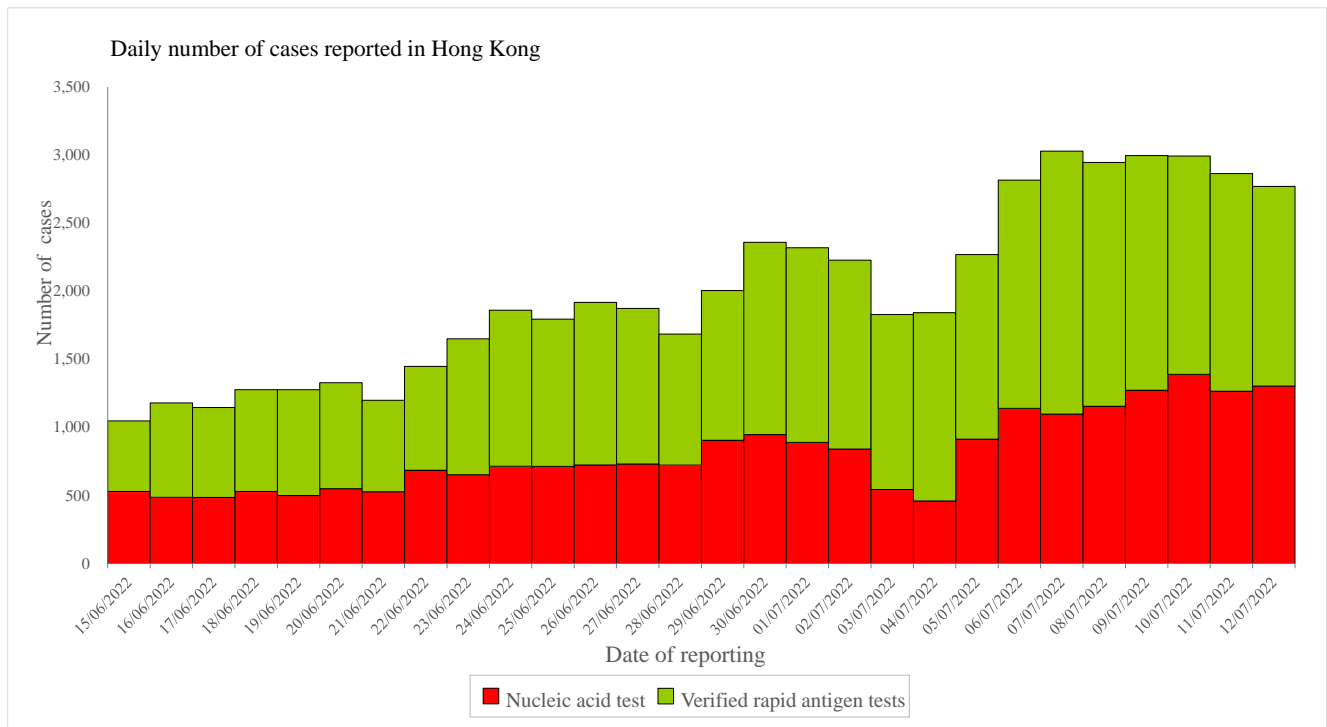


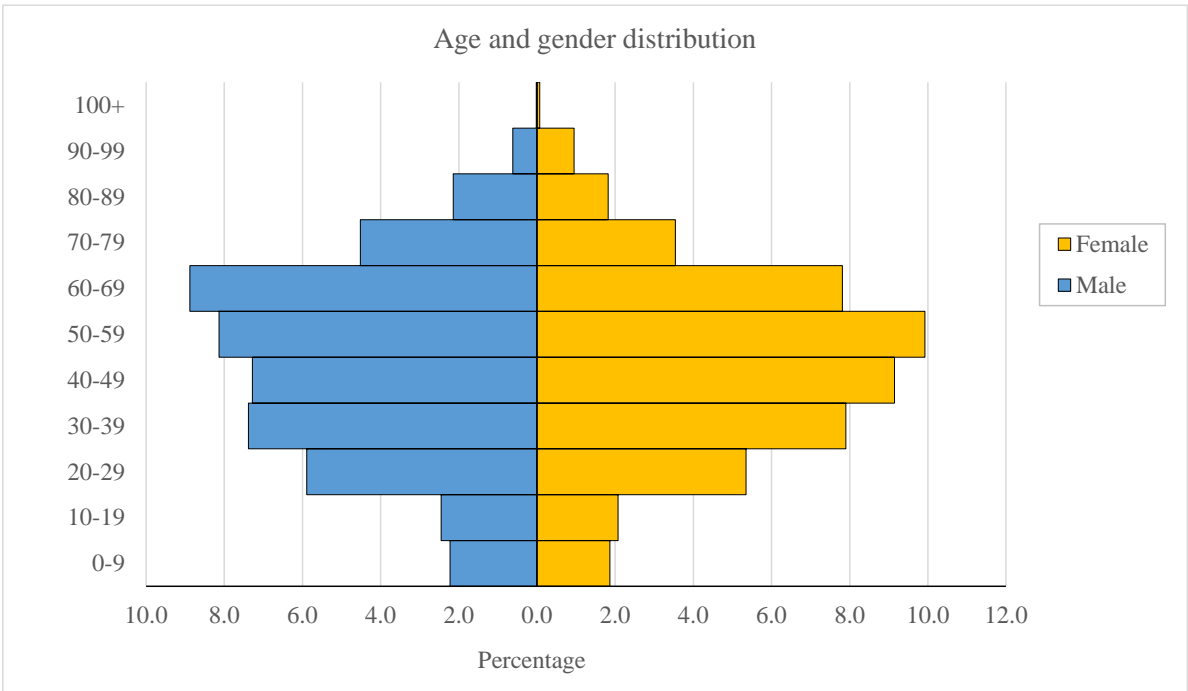
Table 1 shows the classification of cases reported since the 5th wave (since 31 December 2021).

Table 1: Number of cases tested positive for SARS-CoV-2 virus by nucleic acid tests and rapid antigen tests by classification

Reporting period	Imported case	Locally acquired case	Period total
Since the 5th wave	7518 (0.59%)	1256537 (99.41%)	1264055 (100.00%)
In the past 4 weeks			
15/6/2022 - 21/6/2022	794 (9.40%)	7654 (90.60%)	8448 (100.00%)
22/6/2022 - 28/6/2022	929 (7.60%)	11297 (92.40%)	12226 (100.00%)
29/6/2022 - 5/7/2022	1139 (7.67%)	13705 (92.33%)	14844 (100.00%)
6/7/2022 - 12/7/2022	1398 (6.85%)	19009 (93.15%)	20407 (100.00%)

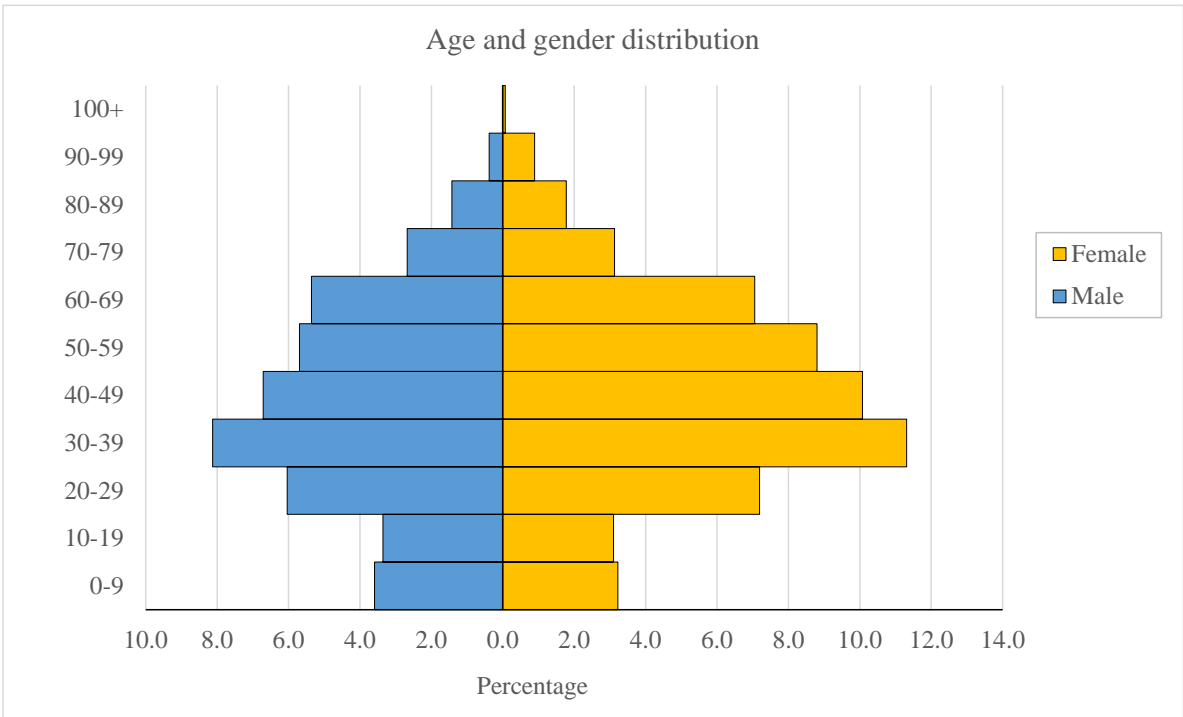
Figure 4 shows the age and gender distribution of the cases (since the 5th wave).

Figure 4(i): Age and gender distribution of cases tested positive for SARS-CoV-2 virus by nucleic acid tests in Hong Kong



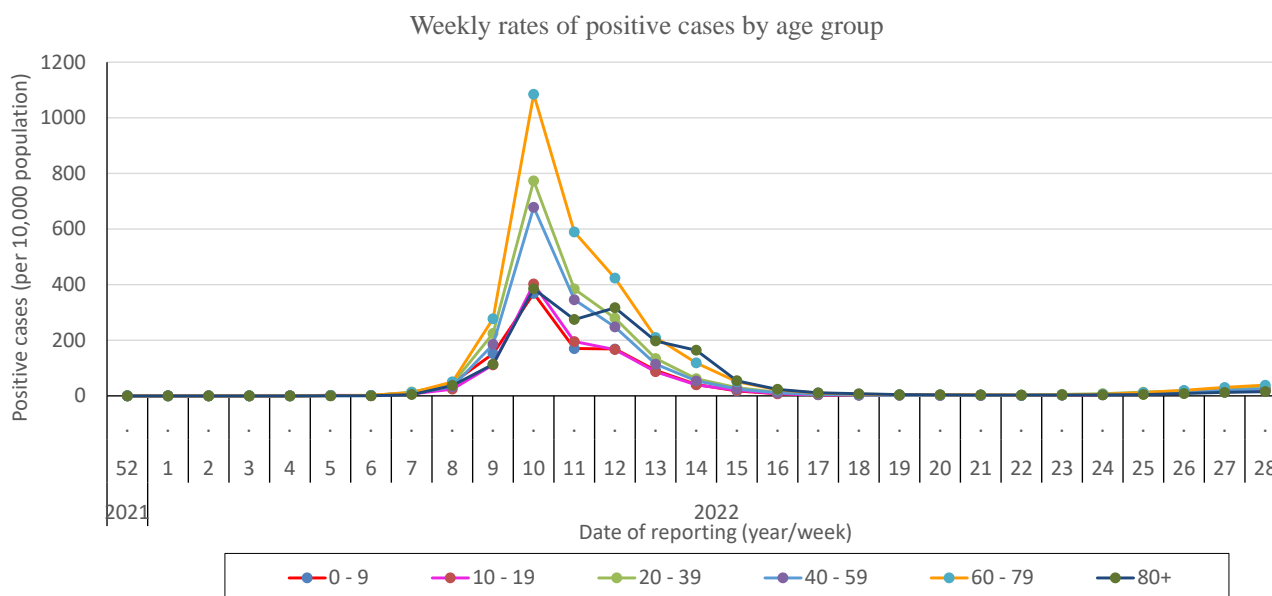
Note: Re-positive cases and cases pending investigation are excluded in Figure 4(i).

Figure 4(ii): Age and gender distribution of cases tested positive for SARS-CoV-2 virus by rapid antigen tests in Hong Kong



Source of data: Data from the Centre for Health Protection of the Department of Health with available information on age and gender.

Figure 5: Weekly rates of positive cases tested by nucleic acid tests and rapid antigen tests (by age group) since the 5th wave



Note:

1. Imported cases are excluded in Figure 5.
2. Data in Figure 5 are updated up to week 28 (week ending on 9 Jul 2022).
3. Data in Figure 5 will be updated on every Tuesday.

Table 2 : Incidences of cases tested positive for SARS-CoV-2 virus by nucleic acid tests and rapid antigen tests by residential districts in 2022

Region	Cumulative Incidence	District	Cumulative Incidence	Apr	May	Jun	Jul
Hong Kong	812.9	Central and Western	691.7	26.5	12.3	54.9	22.8
		Wan Chai	611.4	22.7	8.1	52.8	24.7
		Eastern	872.0	41.2	8.1	39.1	29.9
		Southern	932.1	43.0	7.3	45.5	29.4
Kowloon	1215.8	Kowloon City	927.8	32.9	7.2	37.4	21.1
		Kwun Tong	1343.8	52.3	8.3	30.9	24.0
		Sham Shui Po	1219.3	38.8	9.8	28.1	19.9
		Wong Tai Sin	1357.6	62.2	6.7	26.2	22.2
		Yau Tsim Mong	1125.8	23.8	9.1	40.7	18.6
New Territories East	985.0	Islands	847.3	34.1	7.8	41.2	29.1
		North	1015.6	67.1	12.2	37.5	28.7
		Sai Kung	869.5	37.0	9.8	39.1	27.0
		Sha Tin	1097.4	65.9	9.7	36.7	26.9
		Tai Po	967.8	51.3	8.8	51.7	45.3
New Territories West	1149.4	Kwai Tsing	1315.3	54.1	9.1	25.8	21.8
		Tsuen Wan	997.7	42.6	11.7	38.4	26.0
		Tuen Mun	1229.5	61.0	8.3	36.9	23.6
		Yuen Long	1039.5	42.3	8.9	34.8	24.6

Note:

1. Cases with multiple/ pending/ unknown residential address are excluded in Table 2.
2. Data in Table 2 are shown as number of cases per 10,000 population.
3. Table 2 will be updated on every Tuesday. Data shown in the table are as of 9 Jul 2022.

**Table 3 : Number of cases tested positive for SARS-CoV-2 virus reported
among schools in the past 4 weeks**

Reporting Period	No. of schools with case(s) reported	No. tested positive reported by schools	
		Student	Staff
12/06/2022 - 18/06/2022	485	628	206
19/06/2022 - 25/06/2022	636	929	203
26/06/2022 - 02/07/2022	652	875	182
03/07/2022 - 09/07/2022	860	1307	289

Note:

1. Number of schools is deduplicated based on the reporting week.
2. Data in Table 3 are updated up to week 28 (week ending on 9 Jul 2022).
3. Data in Table 3 will be updated on every Tuesday.

**Table 4 : Number of cases tested positive for SARS-CoV-2 virus reported
among residential care homes (RCHs) in the past 4 weeks**

Reporting Period	No. of RCHs with case(s) reported	No. tested positive reported by RCHs	
		Resident	Staff
12/06/2022 - 18/06/2022	15	18	12
19/06/2022 - 25/06/2022	22	34	21
26/06/2022 - 02/07/2022	21	14	14
03/07/2022 – 09/07/2022	24	26	9

Note:

1. Number of RCHs is deduplicated based on the reporting week.
2. Data in Table 4 are updated up to week 28 (week ending on 9 Jul 2022).
3. Data in Table 4 will be updated on every Tuesday.

Since 31 December 2019, the CHP of the DH has recorded a total of 9420 fatal cases.

Since the 5th wave, a total of 9207 fatal cases have been recorded.

Table 5: Case fatality rate (CFR) by age group and vaccination status (since the 5th wave)

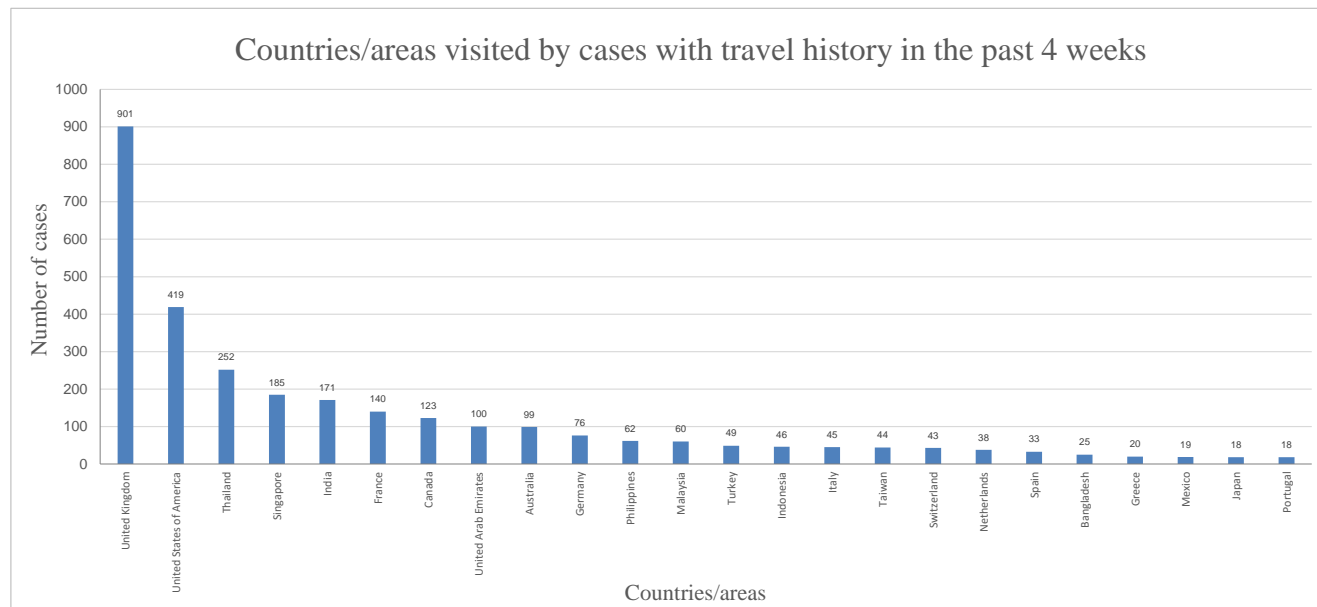
Age Group	CFR of locally acquired cases	CFR of locally acquired cases with history of at least 2 doses of COVID-19 vaccine	CFR of locally acquired cases with history of 1 dose of COVID-19 vaccine or unvaccinated
0-9	0.01%	0.00%	0.01%
10-19	0.01%	0.00%	0.01%
20-29	0.01%	0.01%	0.03%
30-39	0.01%	0.00%	0.04%
40-49	0.03%	0.01%	0.13%
50-59	0.12%	0.04%	0.54%
60-69	0.42%	0.11%	1.29%
70-79	1.74%	0.46%	3.61%
80+	10.15%	3.25%	13.24%
Overall	0.74%	0.13%	2.23%

Source of data: Data from the Centre for Health Protection of the Department of Health with available information on age and vaccination status.

Note: Table 5 will be updated on every Tuesday. Data shown in the table are as at 9 July 2022.

Figure 6 shows the countries/areas visited by the cases tested positive by nucleic acid tests reported in the past 4 weeks with travel history outside Hong Kong during the incubation period.

Figure 6: Countries/areas visited by cases tested positive by nucleic acid tests reported in the past 4 weeks with travel history



Note:

1. Some cases had visited more than one country/area.
2. Re-positive cases are excluded in Figure 6.
3. Only countries/ areas visited by 10 or more cases are included in Figure 6.