

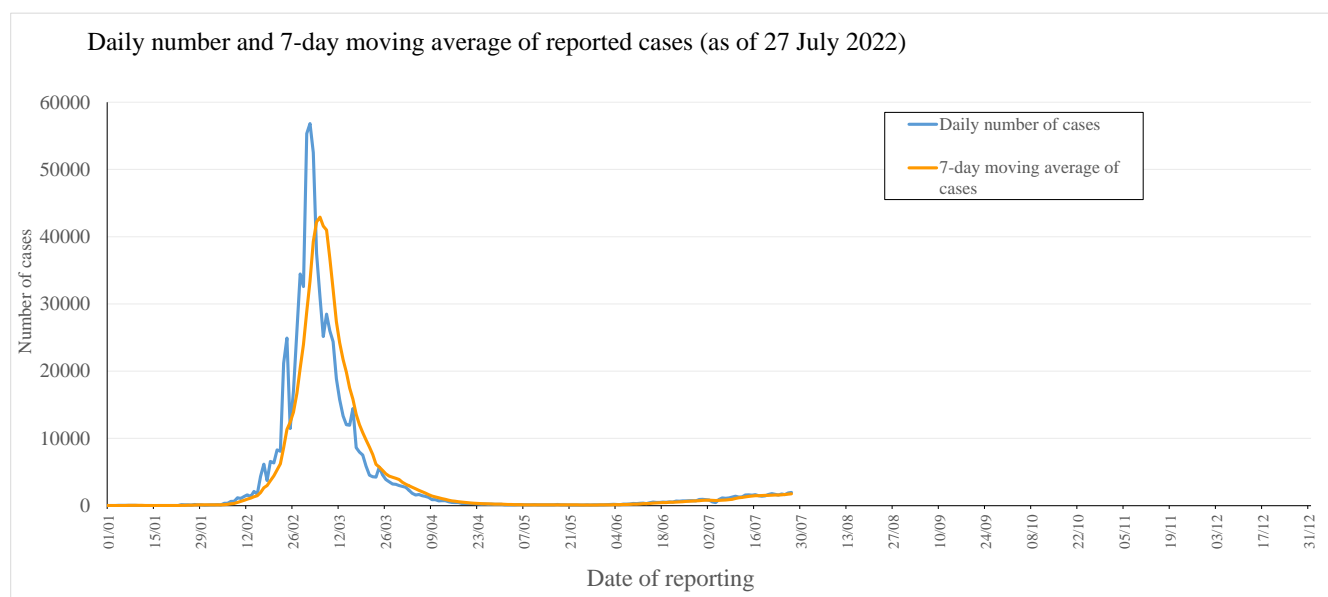
## **Latest situation of COVID-19 (as of 27 July 2022)**

The Centre for Health Protection (CHP) of the Department of Health (DH) today (27 July) announced the latest epidemic situation of COVID-19. As of 0.00am, 27 July 2022, the CHP was investigating 4288 additional locally acquired cases tested positive for the SARS-CoV-2 virus, including 1763 cases tested positive by nucleic acid tests and verified 2525 cases tested positive by rapid antigen tests (RATs) in the past 24 hours<sup>Note 1</sup>. Separately, 220 additional imported cases were reported, including 203 cases tested positive by nucleic acid tests and 17 cases tested positive by RATs. So far, Hong Kong has recorded a total of 813057 and 521850 cases tested positive by nucleic acid tests and RATs respectively for the SARS-CoV-2 virus.

Since the 5th wave (31 December 2021), 800426 cases and 521850 cases were tested positive by nucleic acid tests and rapid antigen tests respectively.

In the recent 7-day period from 21 to 27 July 2022, an average of 1751.9 cases by nucleic acid tests were reported per day, as compared with 1538.6 cases per day reported in the previous 7-day period from 14 to 20 July 2022 (Figure 1(i)).

**Figure 1(i): Daily number and 7-day moving average of cases tested positive for SARS-CoV-2 virus by nucleic acid tests in 2022**<sup>Note 2</sup>



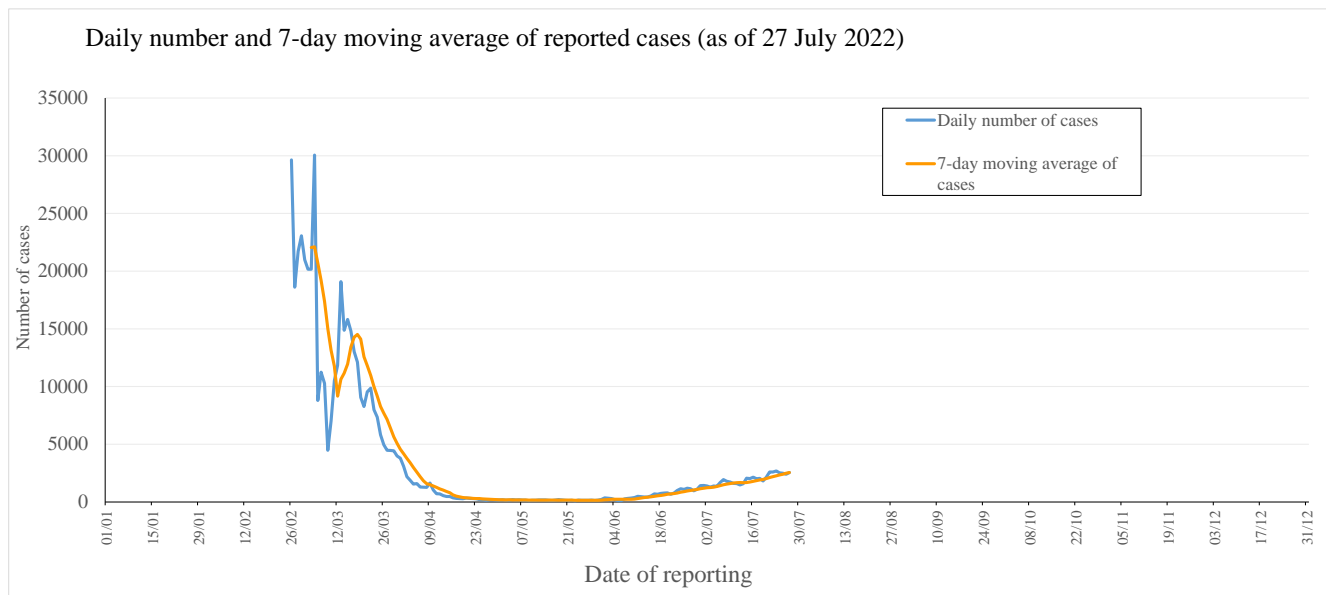
**Note 1:**

Starting from 7 June 2022, only cases reported via the "Declaration System for individuals tested positive for COVID-19 using Rapid Antigen Test" which had been verified with positive nucleic acid test results will be announced. These include RAT positive cases reported in the past few days.

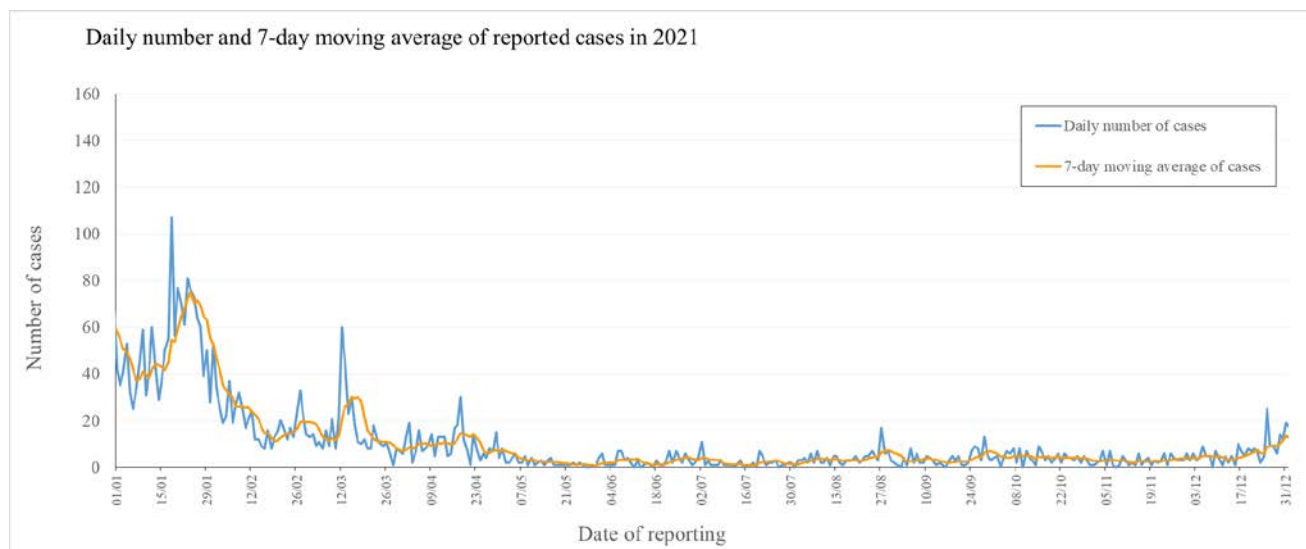
**Note 2:**

- Re-positive cases are excluded in Figure 1(i).
- As announced by the Government on 15 February 2022 ([https://www.news.gov.hk/eng/2022/02/20220215/20220215\\_172336\\_940.html?type=category&name=covid19&tl=i](https://www.news.gov.hk/eng/2022/02/20220215/20220215_172336_940.html?type=category&name=covid19&tl=i)) and 25 February 2022 (<https://www.info.gov.hk/gia/general/202202/25/P2022022500816.htm>), positive cases detected by the Hospital Authority and testing contractors are now directly deemed as confirmed cases.

**Figure 1(ii): Daily number and 7-day moving average of cases tested positive for SARS-CoV-2 virus by rapid antigen tests**

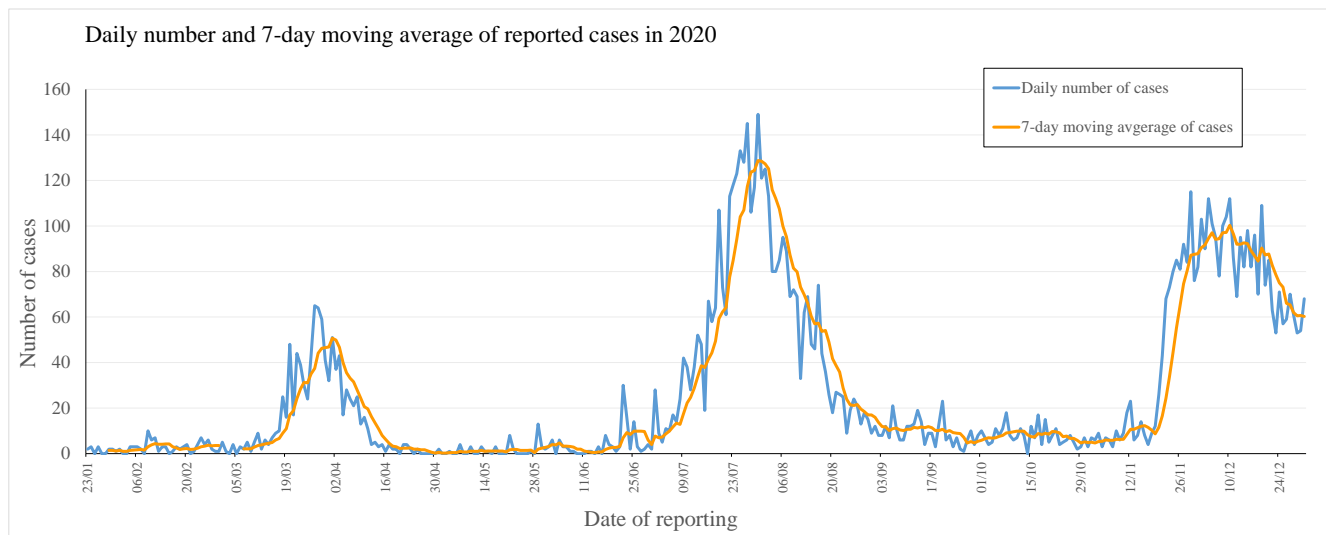


**Figure 1(iii): Daily number and 7-day moving average of cases tested positive for SARS-CoV-2 virus by nucleic acid tests in 2021**



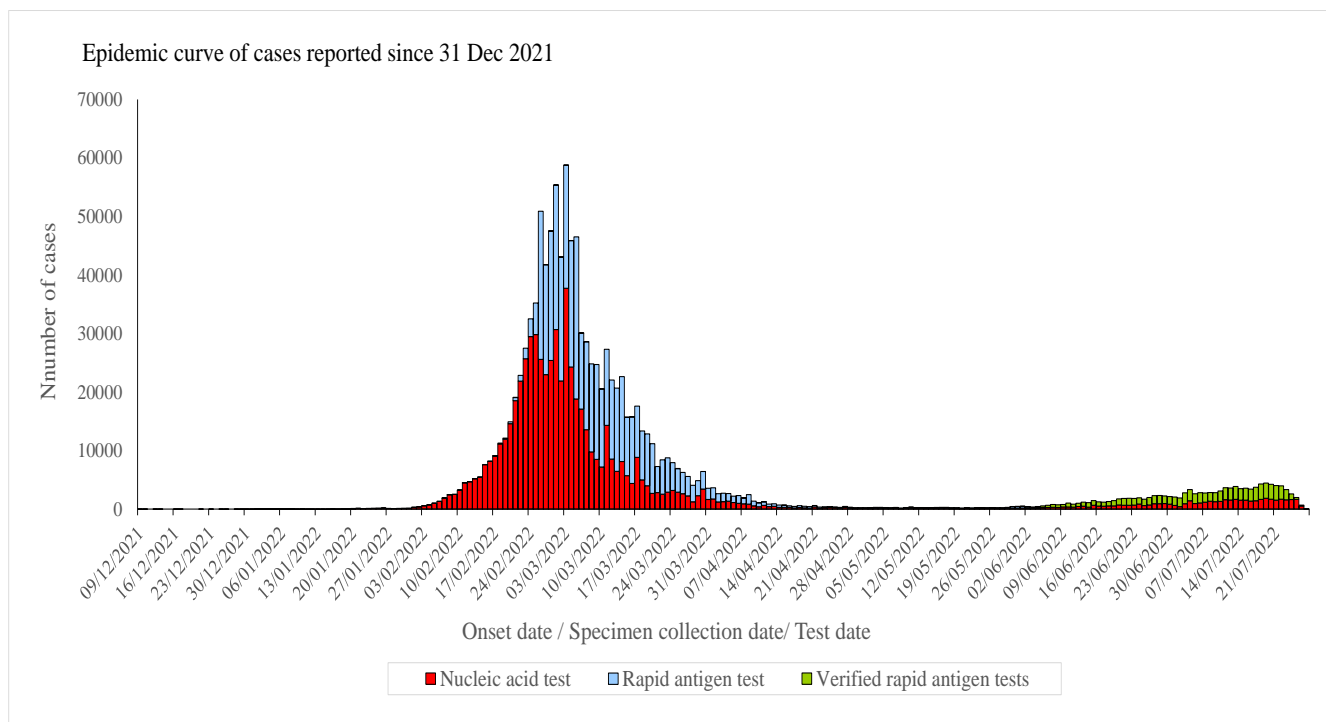
Note: Re-positive cases are excluded in Figure 1(iii).

**Figure 1(iv): Daily number and 7-day moving average of cases tested positive for SARS-CoV-2 virus by nucleic acid tests in 2020**



Note: Re-positive cases are excluded in Figure 1(iv).

**Figure 2: Epidemic curve of cases tested positive for SARS-CoV-2 virus in Hong Kong since 31 December 2021**



Note:

1. Specimen collection dates are used for cases without information of onset dates.
2. Cases still under investigation are excluded in Figure 2.

**Figure 3: Daily number of cases tested positive for SARS-CoV-2 virus reported in the past 4 weeks**

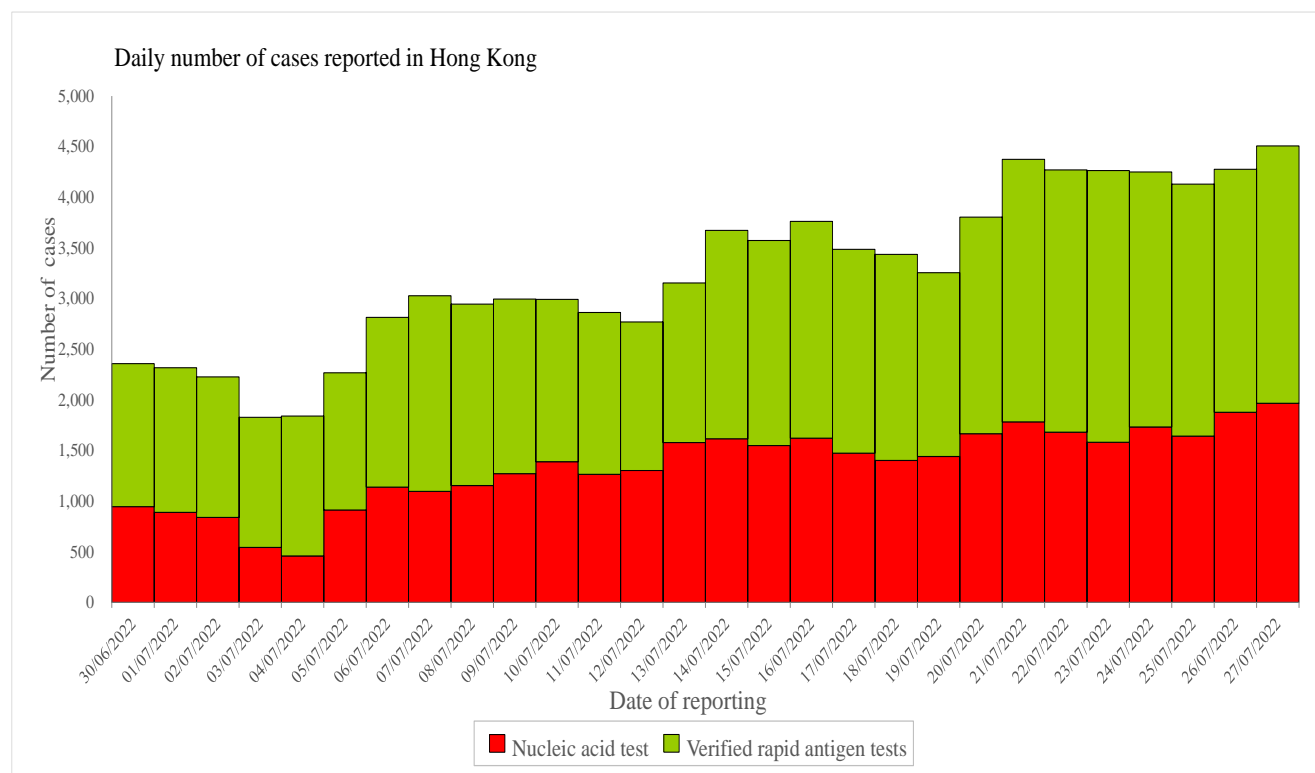


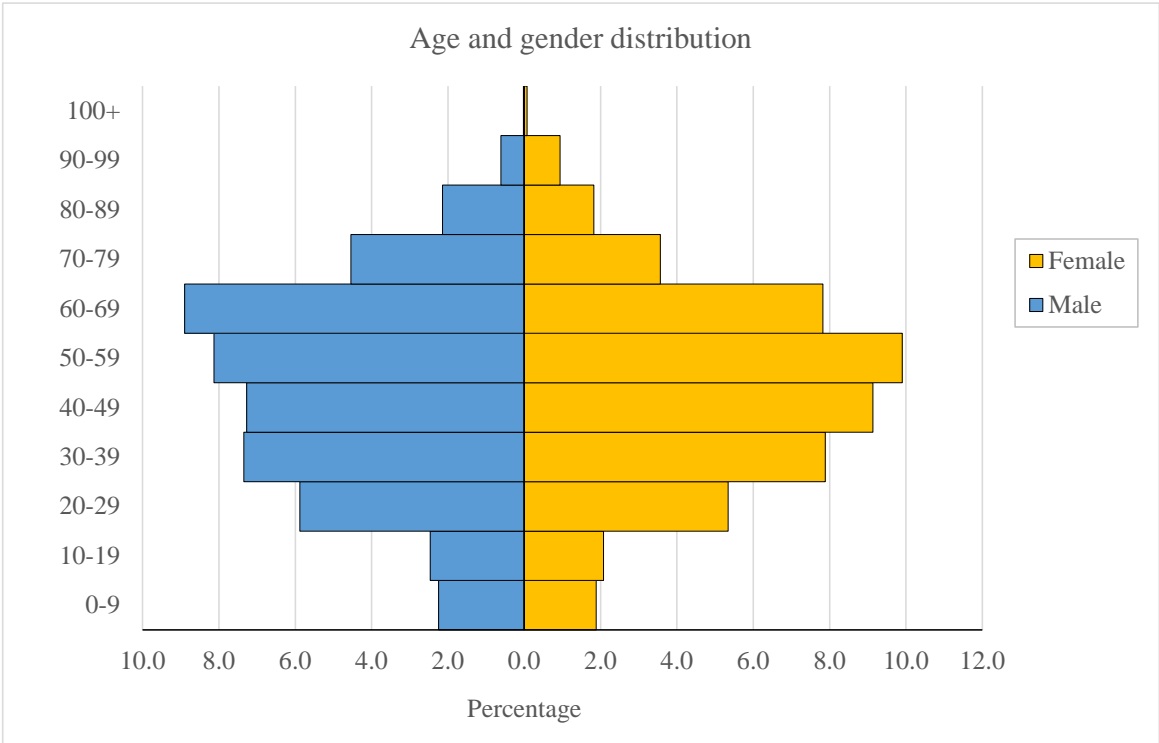
Table 1 shows the classification of cases reported since the 5<sup>th</sup> wave (since 31 December 2021).

**Table 1: Number of cases tested positive for SARS-CoV-2 virus by nucleic acid tests and rapid antigen tests by classification**

Reporting period	Imported case	Locally acquired case	Period total
Since the 5th wave	10916 (0.83%)	1311360 (99.17%)	1322276 (100.00%)
In the past 4 weeks			
30/6/2022 - 6/7/2022	1127 (7.20%)	14528 (92.80%)	15655 (100.00%)
7/7/2022 - 13/7/2022	1466 (7.07%)	19280 (92.93%)	20746 (100.00%)
14/7/2022 - 20/7/2022	1546 (6.19%)	23447 (93.81%)	24993 (100.00%)
21/7/2022 - 27/7/2022	1641 (5.46%)	28433 (94.54%)	30074 (100.00%)

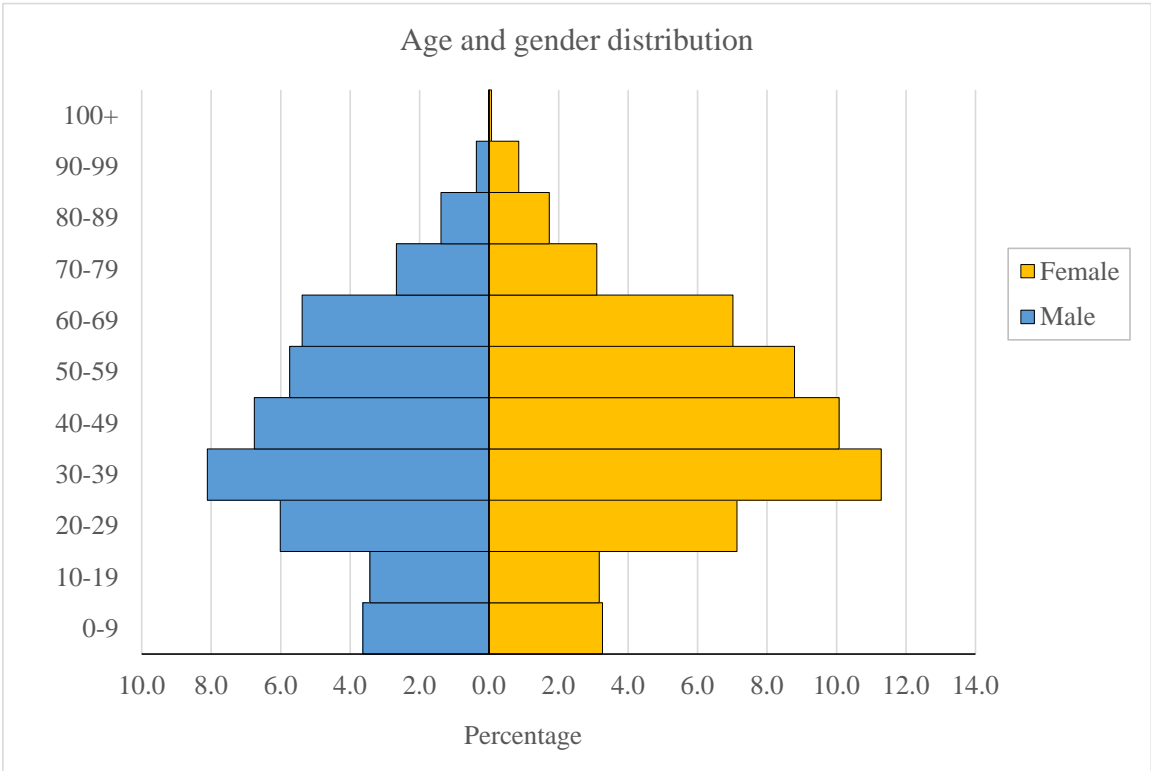
Figure 4 shows the age and gender distribution of the cases (since the 5<sup>th</sup> wave).

**Figure 4(i): Age and gender distribution of cases tested positive for SARS-CoV-2 virus by nucleic acid tests in Hong Kong**



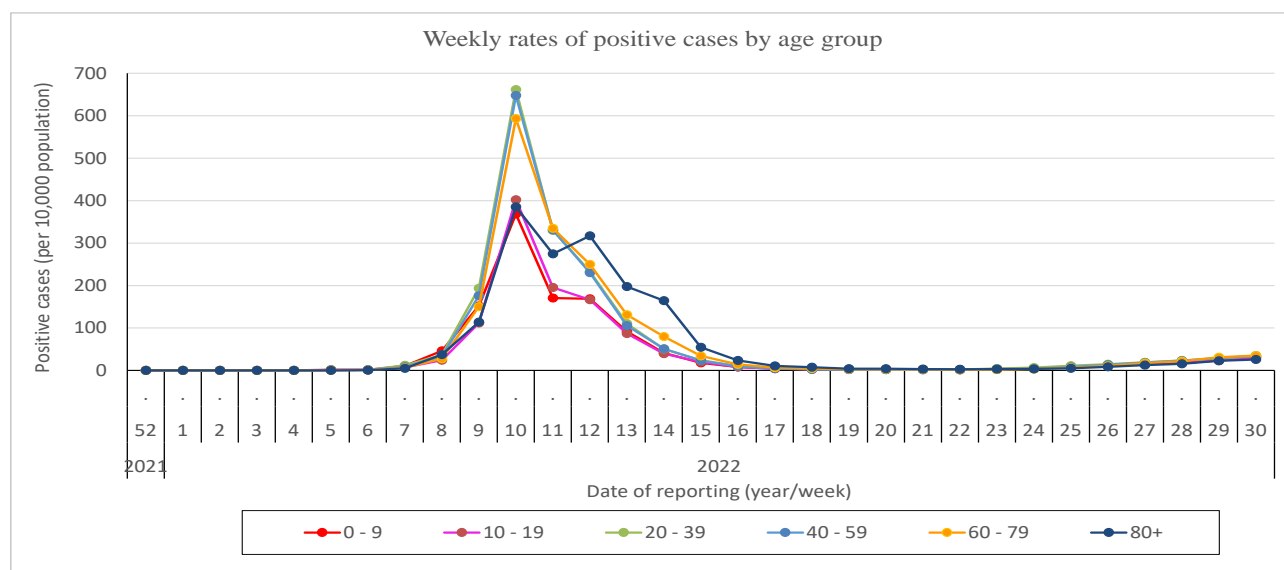
Note: Re-positive cases and cases pending investigation are excluded in Figure 4(i).

**Figure 4(ii): Age and gender distribution of cases tested positive for SARS-CoV-2 virus by rapid antigen tests in Hong Kong**



Source of data: Data from the Centre for Health Protection of the Department of Health with available information on age and gender.

**Figure 5: Weekly rates of positive cases tested by nucleic acid tests and rapid antigen tests (by age group) since the 5<sup>th</sup> wave**



Note:

1. Both imported and re-positive cases are excluded in Figure 5.
2. Data in Figure 5 may be subject to changes when there is new information available.
3. Figure 5 (with data as of the preceding week) will be updated every Tuesday.

**Table 2 : Incidences of cases tested positive for SARS-CoV-2 virus by nucleic acid tests and rapid antigen tests by residential districts in 2022**

Region	Cumulative Incidence	District	Cumulative Incidence	Apr	May	Jun	Jul
Hong Kong	861.9	Central and Western	731.4	26.5	12.3	54.9	62.3
		Wan Chai	648.1	22.7	8.1	52.8	61.2
		Eastern	923.0	41.2	8.1	39.1	80.8
		Southern	993.6	43.0	7.3	45.6	90.8
Kowloon	1266.6	Kowloon City	972.4	32.9	7.2	37.4	65.5
		Kwun Tong	1400.9	52.3	8.3	30.9	80.9
		Sham Shui Po	1269.3	38.8	9.8	28.1	69.3
		Wong Tai Sin	1411.7	62.2	6.7	26.2	76.2
		Yau Tsim Mong	1167.5	23.9	9.1	40.7	60.1
New Territories East	1050.0	Islands	907.9	34.1	7.8	41.2	89.7
		North	1085.3	67.1	12.2	37.5	98.2
		Sai Kung	928.3	37.0	9.8	39.1	85.7
		Sha Tin	1155.7	65.9	9.7	36.7	85.1
		Tai Po	1055.3	51.3	8.8	51.7	132.5
New Territories West	1203.2	Kwai Tsing	1360.7	54.1	9.1	25.8	67.1
		Tsuen Wan	1050.3	42.6	11.7	38.4	78.4
		Tuen Mun	1283.3	61.0	8.3	36.9	77.1
		Yuen Long	1100.0	42.3	8.9	34.8	84.8

Note:

1. Cases with multiple/ pending/ unknown residential address are excluded in Table 2.
2. Data in Table 2 are shown as number of cases per 10,000 population.
3. Table 2 (with data as of the preceding week) will be updated every Tuesday.

**Table 3 : Number of cases tested positive for SARS-CoV-2 virus reported  
among schools in the past 4 weeks**

Reporting Period	No. of schools with case(s) reported	No. tested positive reported by schools	
		Student	Staff
26/06/2022 - 02/07/2022	652	875	182
03/07/2022 - 09/07/2022	860	1307	289
10/07/2022 - 16/07/2022	991	1740	370
17/07/2022 - 23/07/2022	1072	2201	457

Note:

1. Number of schools is deduplicated based on the reporting week.
2. Table 3 (with data as of the preceding week) will be updated every Tuesday.

**Table 4 : Number of cases tested positive for SARS-CoV-2 virus reported  
among residential care homes (RCHs) in the past 4 weeks**

Reporting Period	No. of RCHs with case(s) reported	No. tested positive reported by RCHs	
		Resident	Staff
26/06/2022 - 02/07/2022	21	14	14
03/07/2022 - 09/07/2022	24	26	9
10/07/2022 - 16/07/2022	29	31	4
17/07/2022 - 23/07/2022	25	33	6

Note:

1. Number of RCHs is deduplicated based on the reporting week.
2. Table 4 (with data as of the preceding week) will be updated every Tuesday.

Since 31 December 2019, the CHP of the DH has recorded a total of 9488 fatal cases.

Since the 5<sup>th</sup> wave, a total of 9275 fatal cases have been recorded.

**Table 5: Case fatality rate (CFR) by age group and vaccination status (since the 5<sup>th</sup> wave)**

<b>Age Group</b>	<b>CFR of locally acquired cases</b>	<b>CFR of locally acquired cases with history of at least 2 doses of COVID-19 vaccine</b>	<b>CFR of locally acquired cases with history of 1 dose of COVID-19 vaccine or unvaccinated</b>
<b>0-9</b>	0.01%	0.00%	0.01%
<b>10-19</b>	0.01%	0.00%	0.01%
<b>20-29</b>	0.01%	0.00%	0.03%
<b>30-39</b>	0.01%	0.00%	0.04%
<b>40-49</b>	0.03%	0.01%	0.13%
<b>50-59</b>	0.12%	0.04%	0.53%
<b>60-69</b>	0.41%	0.11%	1.28%
<b>70-79</b>	1.69%	0.44%	3.60%
<b>80+</b>	9.91%	3.12%	13.18%
<b>Overall</b>	<b>0.71%</b>	<b>0.13%</b>	<b>2.20%</b>

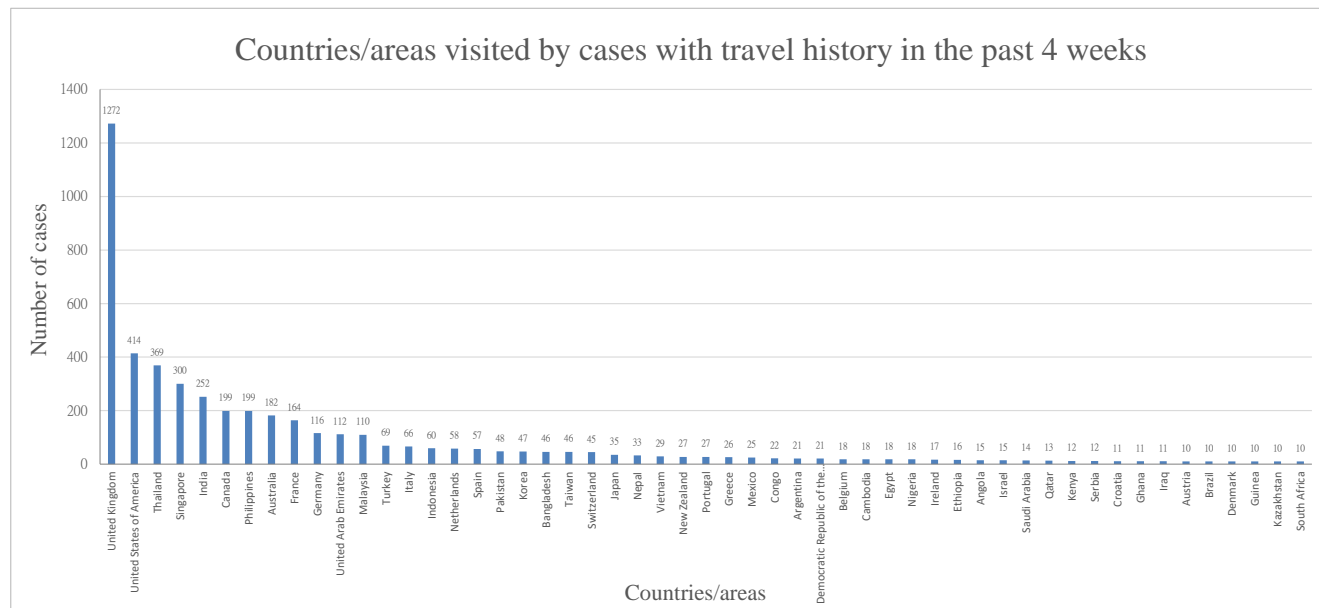
Source of data: Data from the Centre for Health Protection of the Department of Health with available information on age and vaccination status.

Note: Table 5 (with data as of the preceding week) will be updated every Tuesday.



Figure 6 shows the countries/areas visited by the cases tested positive by nucleic acid tests reported in the past 4 weeks with travel history outside Hong Kong during the incubation period.

**Figure 6: Countries/areas visited by cases tested positive by nucleic acid tests reported in the past 4 weeks with travel history**



Note:

1. Some cases had visited more than one country/area.
2. Re-positive cases are excluded in Figure 6.
3. Only countries/ areas visited by 10 or more cases are included in Figure 6.