

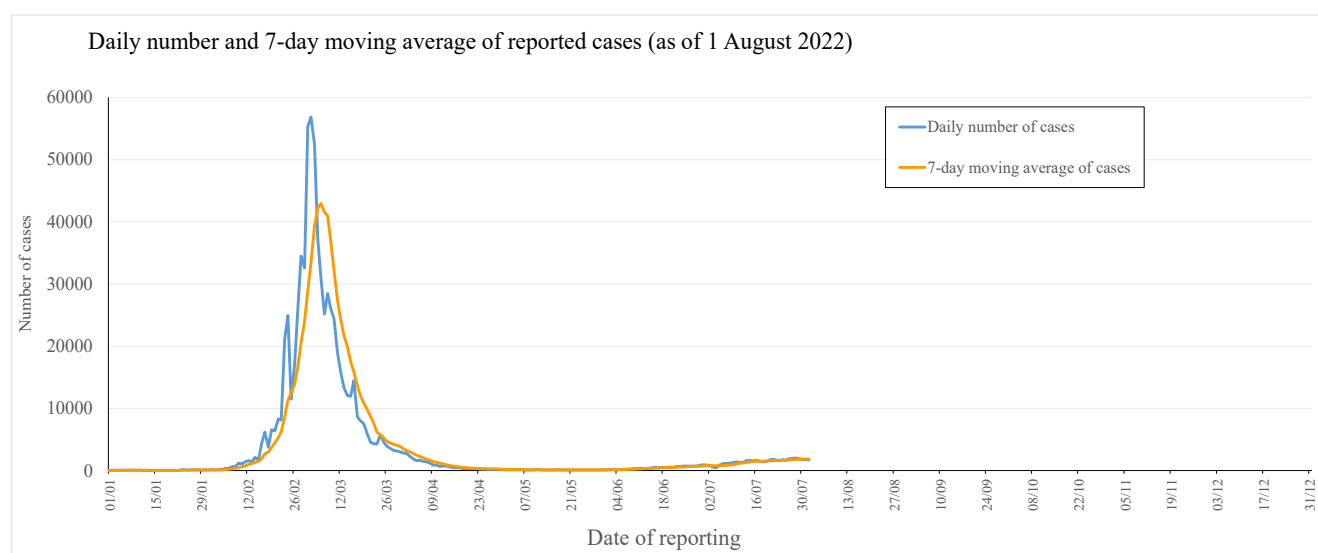
## **Latest situation of COVID-19 (as of 1 August 2022)**

The Centre for Health Protection (CHP) of the Department of Health (DH) today (1 August) announced the latest epidemic situation of COVID-19. As of 0.00am, 1 August 2022, the CHP was investigating 4019 additional locally acquired cases tested positive for the SARS-CoV-2 virus, including 1486 cases tested positive by nucleic acid tests and verified 2533 cases tested positive by rapid antigen tests (RATs) in the past 24 hours<sup>Note 1</sup>. Separately, 235 additional imported cases were reported, including 213 cases tested positive by nucleic acid tests and 22 cases tested positive by RATs. So far, Hong Kong has recorded a total of 822152 and 536096 cases tested positive by nucleic acid tests and RATs respectively for the SARS-CoV-2 virus.

Since the 5th wave (31 December 2021), 809521 cases and 536096 cases were tested positive by nucleic acid tests and rapid antigen tests respectively.

In the recent 7-day period from 26 July to 1 August 2022, an average of 1848.3 cases by nucleic acid tests were reported per day, as compared with 1646.7 cases per day reported in the previous 7-day period from 19 to 25 July 2022 (Figure 1(i)).

**Figure 1(i): Daily number and 7-day moving average of cases tested positive for SARS-CoV-2 virus by nucleic acid tests in 2022**<sup>Note 2</sup>



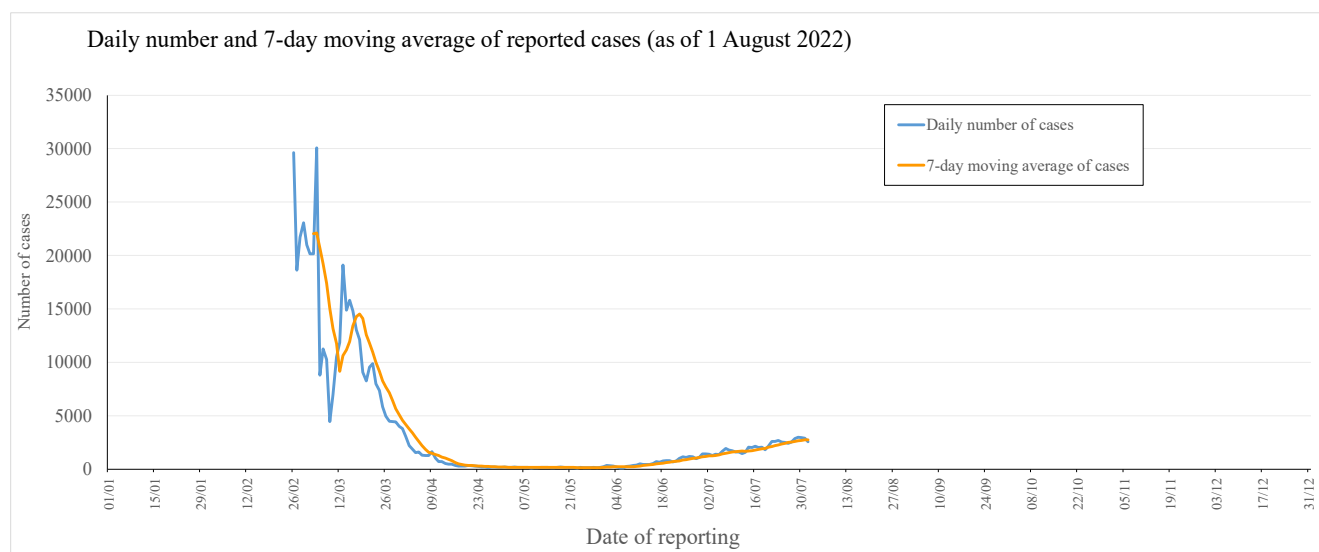
**Note 1:**

Starting from 7 June 2022, only cases reported via the "Declaration System for individuals tested positive for COVID-19 using Rapid Antigen Test" which had been verified with positive nucleic acid test results will be announced. These include RAT positive cases reported in the past few days.

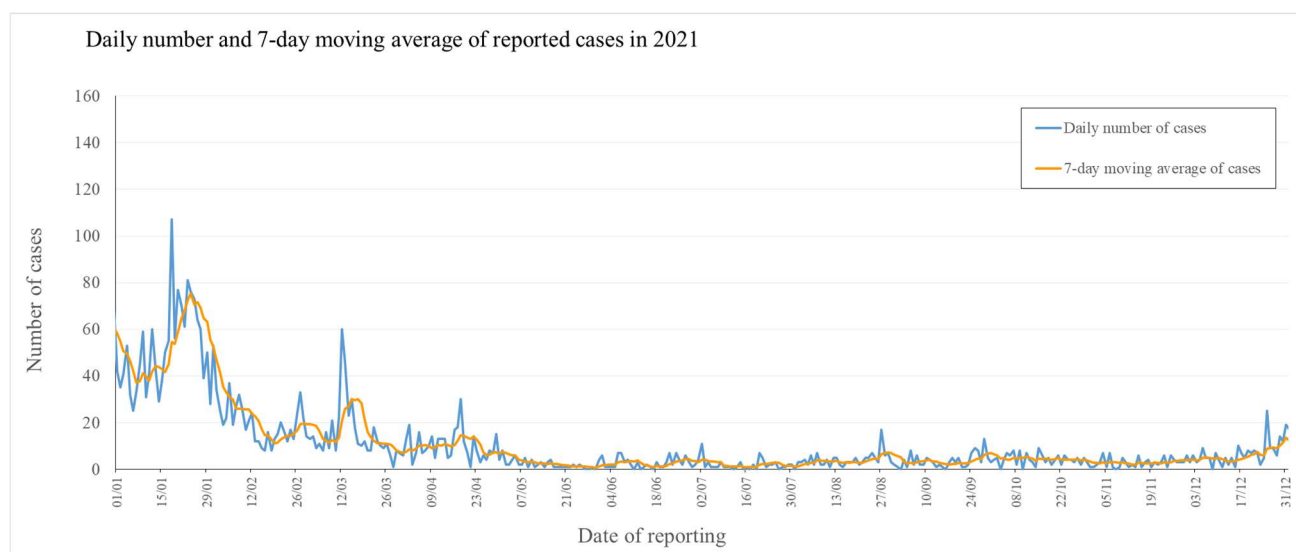
**Note 2:**

- Re-positive cases are excluded in Figure 1(i).
- As announced by the Government on 15 February 2022 ([https://www.news.gov.hk/eng/2022/02/20220215/20220215\\_172336\\_940.html?type=category&name=covid19&title=](https://www.news.gov.hk/eng/2022/02/20220215/20220215_172336_940.html?type=category&name=covid19&title=)) and 25 February 2022 (<https://www.info.gov.hk/gia/general/202202/25/P2022022500816.htm>), positive cases detected by the Hospital Authority and testing contractors are now directly deemed as confirmed cases.

**Figure 1(ii): Daily number and 7-day moving average of cases tested positive for SARS-CoV-2 virus by rapid antigen tests**

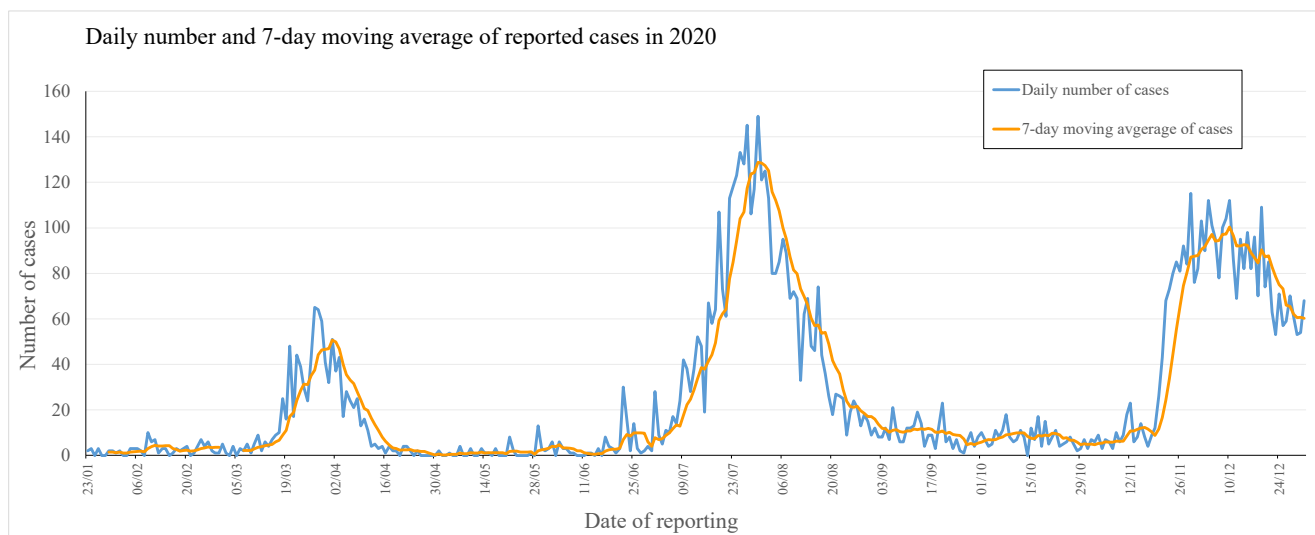


**Figure 1(iii): Daily number and 7-day moving average of cases tested positive for SARS-CoV-2 virus by nucleic acid tests in 2021**



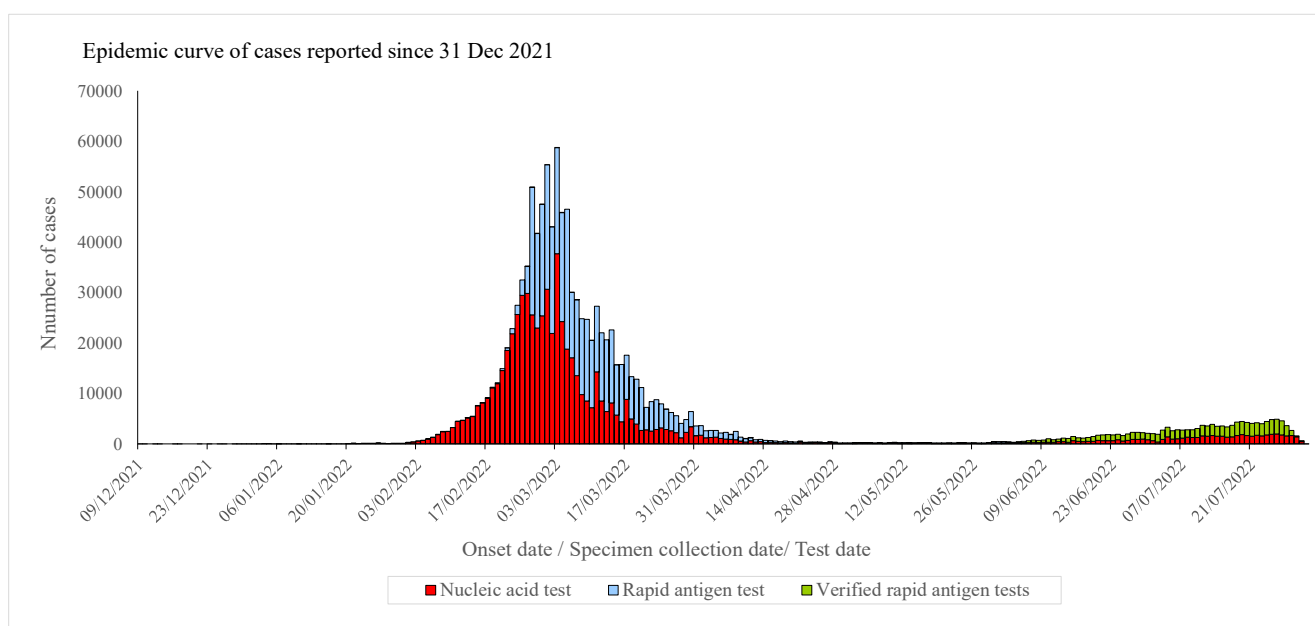
Note: Re-positive cases are excluded in Figure 1(iii).

**Figure 1(iv): Daily number and 7-day moving average of cases tested positive for SARS-CoV-2 virus by nucleic acid tests in 2020**



Note: Re-positive cases are excluded in Figure 1(iv).

**Figure 2: Epidemic curve of cases tested positive for SARS-CoV-2 virus in Hong Kong since 31 December 2021**



Note:

1. Specimen collection dates are used for cases without information of onset dates.
2. Cases still under investigation are excluded in Figure 2.

**Figure 3: Daily number of cases tested positive for SARS-CoV-2 virus reported in the past 4 weeks**

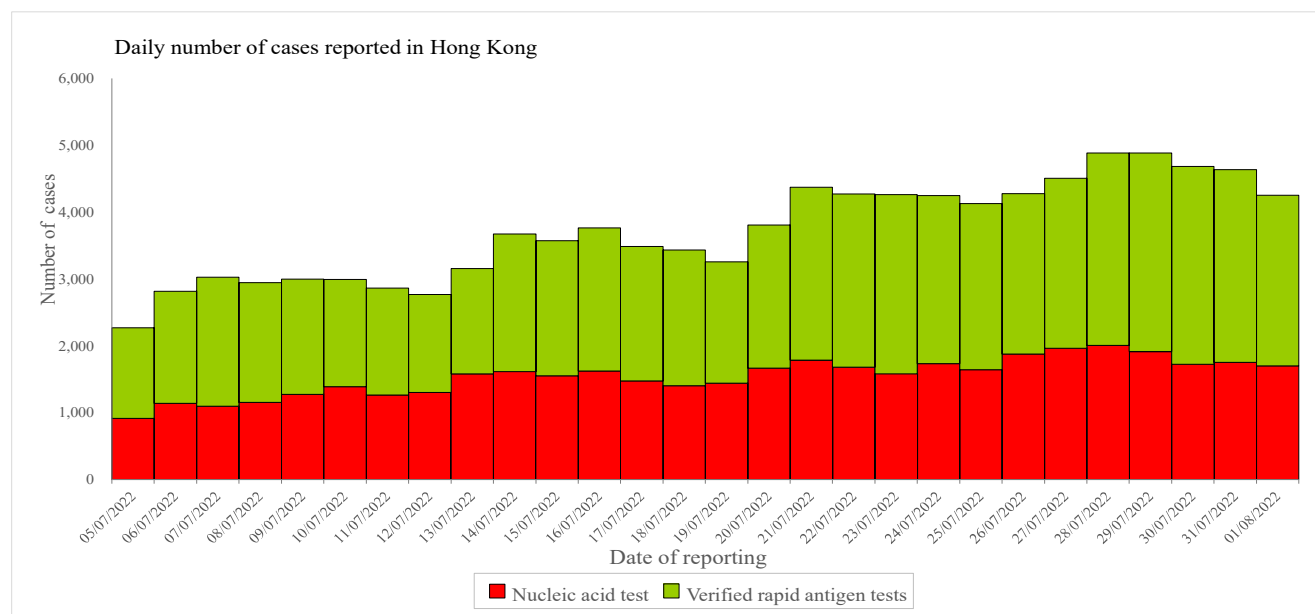


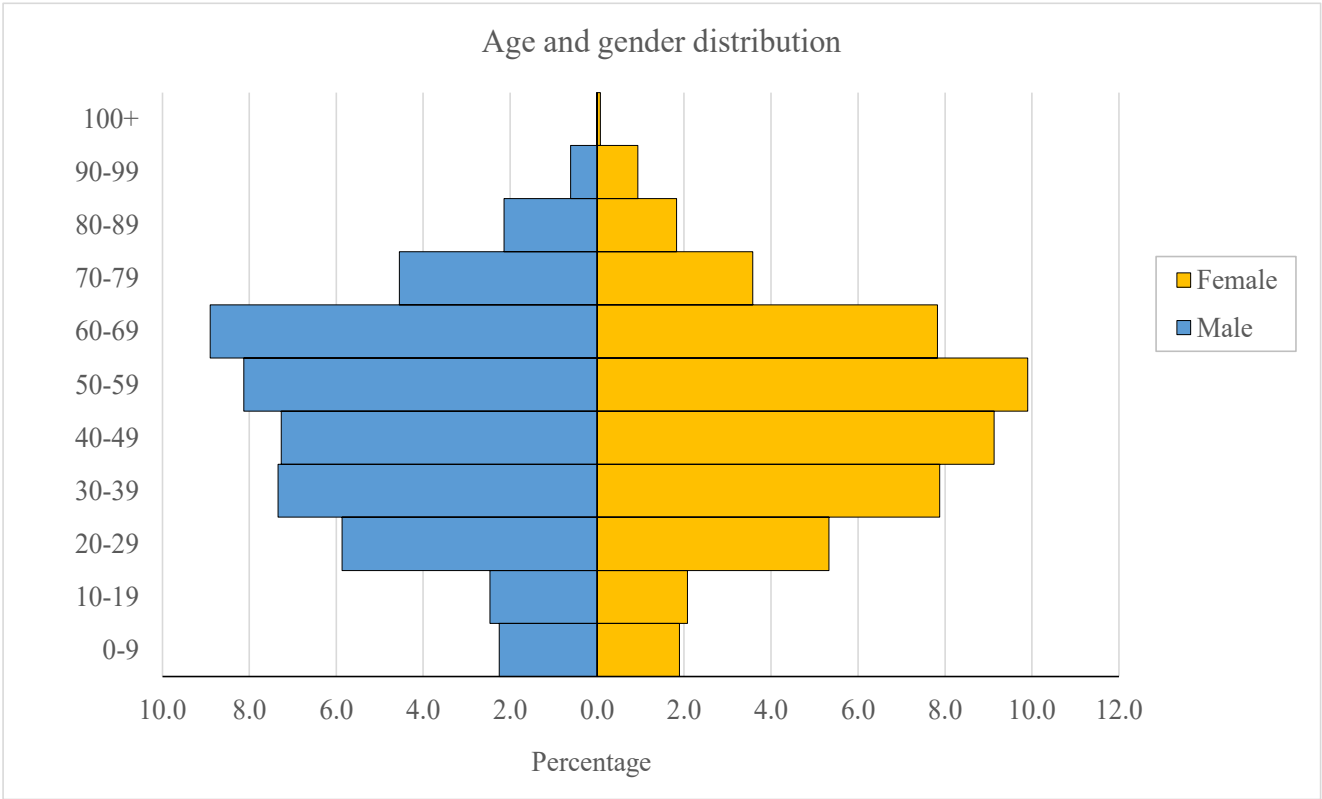
Table 1 shows the classification of cases reported since the 5<sup>th</sup> wave (since 31 December 2021).

**Table 1: Number of cases tested positive for SARS-CoV-2 virus by nucleic acid tests and rapid antigen tests by classification**

| Reporting period      | Imported case | Locally acquired case | Period total      |
|-----------------------|---------------|-----------------------|-------------------|
| Since the 5th wave    | 11959 (0.89%) | 1333658 (99.11%)      | 1345617 (100.00%) |
| In the past 4 weeks   |               |                       |                   |
| 5/7/2022 - 11/7/2022  | 1370 (6.88%)  | 18536 (93.12%)        | 19906 (100.00%)   |
| 12/7/2022 - 18/7/2022 | 1551 (6.50%)  | 22304 (93.50%)        | 23855 (100.00%)   |
| 19/7/2022 - 25/7/2022 | 1537 (5.42%)  | 26814 (94.58%)        | 28351 (100.00%)   |
| 26/7/2022 - 1/8/2022  | 1564 (4.87%)  | 30561 (95.13%)        | 32125 (100.00%)   |

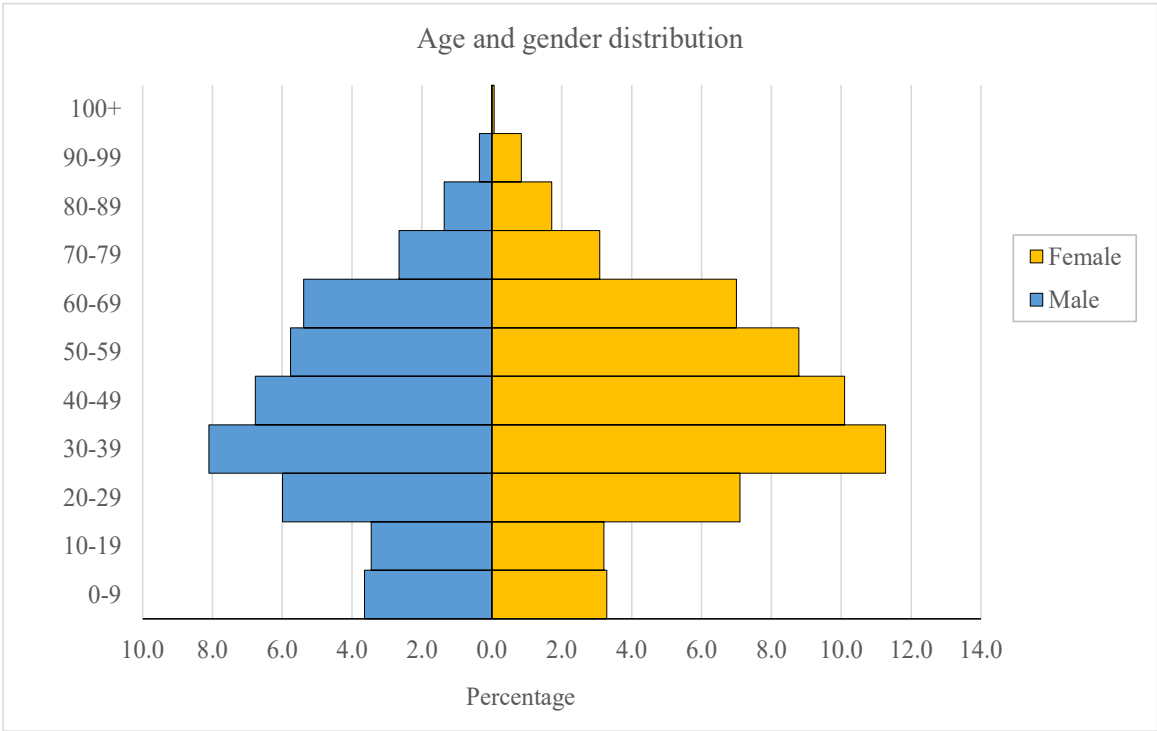
Figure 4 shows the age and gender distribution of the cases (since the 5<sup>th</sup> wave).

**Figure 4(i): Age and gender distribution of cases tested positive for SARS-CoV-2 virus by nucleic acid tests in Hong Kong**



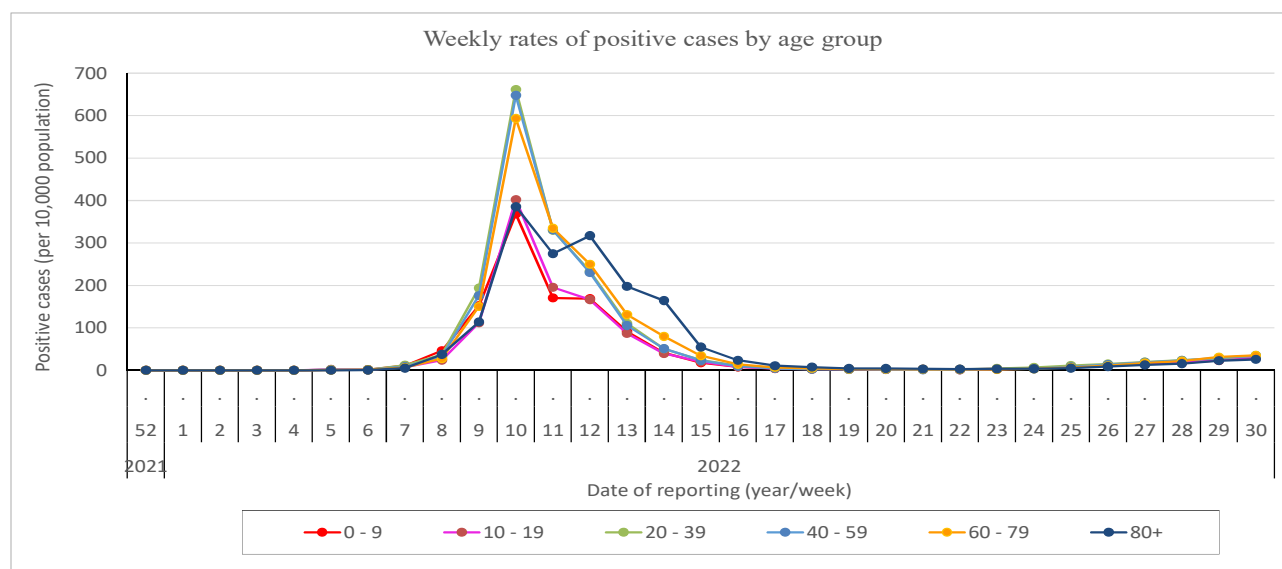
Note: Re-positive cases and cases pending investigation are excluded in Figure 4(i).

**Figure 4(ii): Age and gender distribution of cases tested positive for SARS-CoV-2 virus by rapid antigen tests in Hong Kong**



Source of data: Data from the Centre for Health Protection of the Department of Health with available information on age and gender.

**Figure 5: Weekly rates of positive cases tested by nucleic acid tests and rapid antigen tests (by age group) since the 5<sup>th</sup> wave**



Note:

1. Both imported and re-positive cases are excluded in Figure 5.
2. Data in Figure 5 may be subject to changes when there is new information available.
3. Figure 5 (with data as of the preceding week) will be updated every Tuesday.

**Table 2 : Incidences of cases tested positive for SARS-CoV-2 virus by nucleic acid tests and rapid antigen tests by residential districts in 2022**

| Region               | Cumulative Incidence | District            | Cumulative Incidence | Apr  | May  | Jun  | Jul   |
|----------------------|----------------------|---------------------|----------------------|------|------|------|-------|
| Hong Kong            | 861.9                | Central and Western | 731.4                | 26.5 | 12.3 | 54.9 | 62.3  |
|                      |                      | Wan Chai            | 648.1                | 22.7 | 8.1  | 52.8 | 61.2  |
|                      |                      | Eastern             | 923.0                | 41.2 | 8.1  | 39.1 | 80.8  |
|                      |                      | Southern            | 993.6                | 43.0 | 7.3  | 45.6 | 90.8  |
| Kowloon              | 1266.6               | Kowloon City        | 972.4                | 32.9 | 7.2  | 37.4 | 65.5  |
|                      |                      | Kwun Tong           | 1400.9               | 52.3 | 8.3  | 30.9 | 80.9  |
|                      |                      | Sham Shui Po        | 1269.3               | 38.8 | 9.8  | 28.1 | 69.3  |
|                      |                      | Wong Tai Sin        | 1411.7               | 62.2 | 6.7  | 26.2 | 76.2  |
|                      |                      | Yau Tsim Mong       | 1167.5               | 23.9 | 9.1  | 40.7 | 60.1  |
| New Territories East | 1050.0               | Islands             | 907.9                | 34.1 | 7.8  | 41.2 | 89.7  |
|                      |                      | North               | 1085.3               | 67.1 | 12.2 | 37.5 | 98.2  |
|                      |                      | Sai Kung            | 928.3                | 37.0 | 9.8  | 39.1 | 85.7  |
|                      |                      | Sha Tin             | 1155.7               | 65.9 | 9.7  | 36.7 | 85.1  |
|                      |                      | Tai Po              | 1055.3               | 51.3 | 8.8  | 51.7 | 132.5 |
| New Territories West | 1203.2               | Kwai Tsing          | 1360.7               | 54.1 | 9.1  | 25.8 | 67.1  |
|                      |                      | Tsuen Wan           | 1050.3               | 42.6 | 11.7 | 38.4 | 78.4  |
|                      |                      | Tuen Mun            | 1283.3               | 61.0 | 8.3  | 36.9 | 77.1  |
|                      |                      | Yuen Long           | 1100.0               | 42.3 | 8.9  | 34.8 | 84.8  |

Note:

1. Cases with multiple/ pending/ unknown residential address are excluded in Table 2.
2. Data in Table 2 are shown as number of cases per 10,000 population.
3. Table 2 (with data as of the preceding week) will be updated every Tuesday.

**Table 3 : Number of cases tested positive for SARS-CoV-2 virus reported  
among schools in the past 4 weeks**

| Reporting Period        | No. of schools with case(s) reported | No. tested positive reported by schools |       |
|-------------------------|--------------------------------------|---|-------|
|                         |                                      | Student                                 | Staff |
| 26/06/2022 - 02/07/2022 | 652                                  | 875                                     | 182   |
| 03/07/2022 - 09/07/2022 | 860                                  | 1307                                    | 289   |
| 10/07/2022 - 16/07/2022 | 991                                  | 1740                                    | 370   |
| 17/07/2022 - 23/07/2022 | 1072                                 | 2201                                    | 457   |

Note:

1. Number of schools is deduplicated based on the reporting week.
2. Table 3 (with data as of the preceding week) will be updated every Tuesday.

**Table 4 : Number of cases tested positive for SARS-CoV-2 virus reported  
among residential care homes (RCHs) in the past 4 weeks**

| Reporting Period        | No. of RCHs with case(s) reported | No. tested positive reported by RCHs |       |
|-------------------------|-----------------------------------|--------------------------------------|-------|
|                         |                                   | Resident                             | Staff |
| 26/06/2022 - 02/07/2022 | 21                                | 14                                   | 14    |
| 03/07/2022 - 09/07/2022 | 24                                | 26                                   | 9     |
| 10/07/2022 - 16/07/2022 | 29                                | 31                                   | 4     |
| 17/07/2022 - 23/07/2022 | 25                                | 33                                   | 6     |

Note:

1. Number of RCHs is deduplicated based on the reporting week.
2. Table 4 (with data as of the preceding week) will be updated every Tuesday.

Since 31 December 2019, the CHP of the DH has recorded a total of 9509 fatal cases.

Since the 5<sup>th</sup> wave, a total of 9296 fatal cases have been recorded.

**Table 5: Case fatality rate (CFR) by age group and vaccination status (since the 5<sup>th</sup> wave)**

| <b>Age Group</b> | <b>CFR<br/>of locally acquired<br/>cases</b> | <b>CFR<br/>of locally acquired cases<br/>with history of at least 2<br/>doses of COVID-19 vaccine</b> | <b>CFR<br/>of locally acquired cases<br/>with history of 1 dose of<br/>COVID-19 vaccine or<br/>unvaccinated</b> |
|------------------|--|---|---|
| <b>0-9</b>       | 0.01%  | 0.00%   | 0.01%   |
| <b>10-19</b>     | 0.01%  | 0.00%   | 0.01%   |
| <b>20-29</b>     | 0.01%  | 0.00%   | 0.03%   |
| <b>30-39</b>     | 0.01%  | 0.00%   | 0.04%   |
| <b>40-49</b>     | 0.03%  | 0.01%   | 0.13%   |
| <b>50-59</b>     | 0.12%  | 0.04%   | 0.53%   |
| <b>60-69</b>     | 0.41%  | 0.11%   | 1.28%   |
| <b>70-79</b>     | 1.69%  | 0.44%   | 3.60%   |
| <b>80+</b>       | 9.91%  | 3.12%   | 13.18%  |
| <b>Overall</b>   | <b>0.71%</b>                                 | <b>0.13%</b>  | <b>2.20%</b>  |

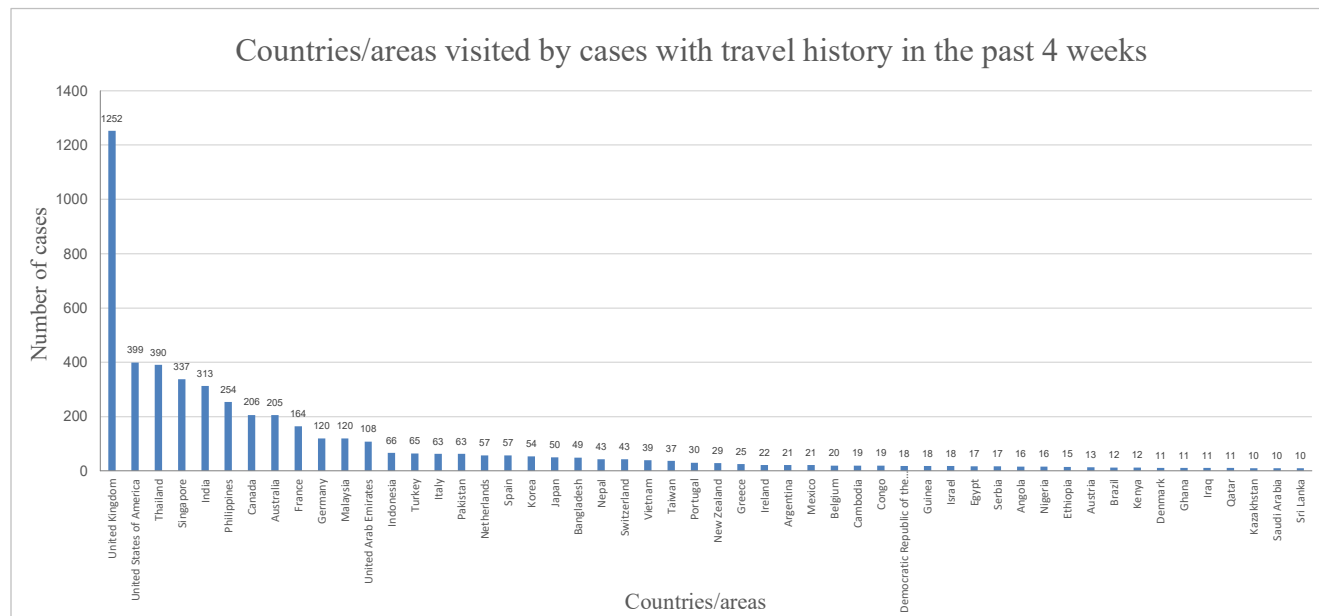
Source of data: Data from the Centre for Health Protection of the Department of Health with available information on age and vaccination status.

Note: Table 5 (with data as of the preceding week) will be updated every Tuesday.



Figure 6 shows the countries/areas visited by the cases tested positive by nucleic acid tests reported in the past 4 weeks with travel history outside Hong Kong during the incubation period.

**Figure 6: Countries/areas visited by cases tested positive by nucleic acid tests reported in the past 4 weeks with travel history**



Note:

1. Some cases had visited more than one country/area.
2. Re-positive cases are excluded in Figure 6.
3. Only countries/ areas visited by 10 or more cases are included in Figure 6.