

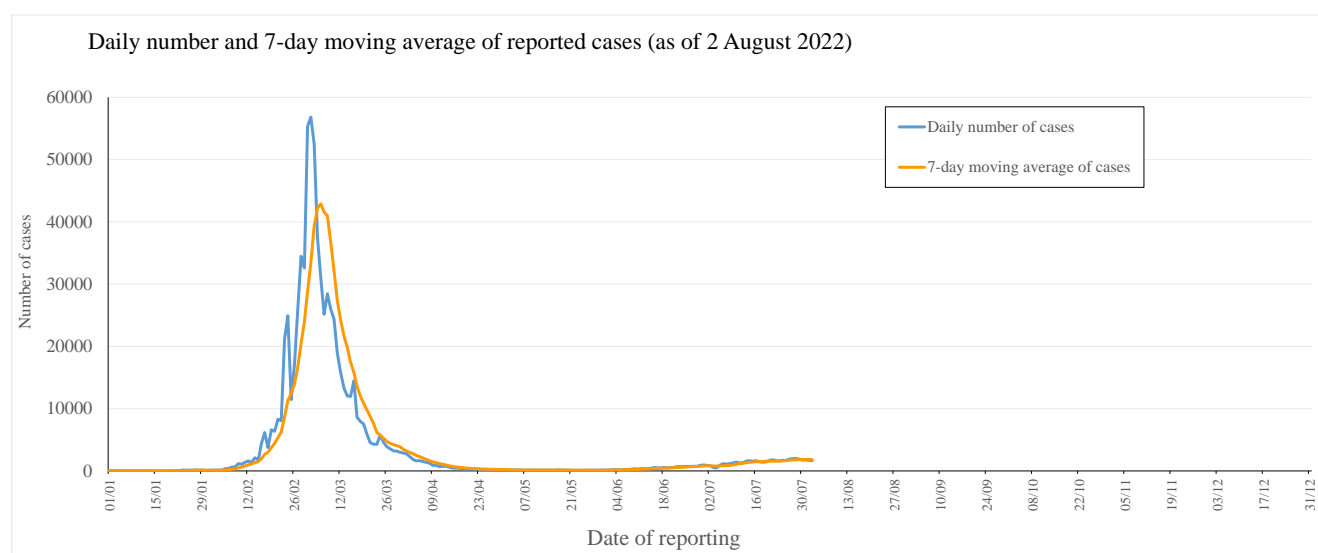
Latest situation of COVID-19 (as of 2 August 2022)

The Centre for Health Protection (CHP) of the Department of Health (DH) today (2 August) announced the latest epidemic situation of COVID-19. As of 0.00am, 2 August 2022, the CHP was investigating 3889 additional locally acquired cases tested positive for the SARS-CoV-2 virus, including 1430 cases tested positive by nucleic acid tests and verified 2459 cases tested positive by rapid antigen tests (RATs) in the past 24 hours^{Note 1}. Separately, 234 additional imported cases were reported, including 219 cases tested positive by nucleic acid tests and 15 cases tested positive by RATs. So far, Hong Kong has recorded a total of 823801 and 538570 cases tested positive by nucleic acid tests and RATs respectively for the SARS-CoV-2 virus.

Since the 5th wave (31 December 2021), 811170 cases and 538570 cases were tested positive by nucleic acid tests and rapid antigen tests respectively.

In the recent 7-day period from 27 July to 2 August 2022, an average of 1815.7 cases by nucleic acid tests were reported per day, as compared with 1709.0 cases per day reported in the previous 7-day period from 20 to 26 July 2022 (Figure 1(i)).

Figure 1(i): Daily number and 7-day moving average of cases tested positive for SARS-CoV-2 virus by nucleic acid tests in 2022^{Note 2}



Note 1:

Starting from 7 June 2022, only cases reported via the "Declaration System for individuals tested positive for COVID-19 using Rapid Antigen Test" which had been verified with positive nucleic acid test results will be announced. These include RAT positive cases reported in the past few days.

Note 2:

- Re-positive cases are excluded in Figure 1(i).
- As announced by the Government on 15 February 2022 (https://www.news.gov.hk/eng/2022/02/20220215/20220215_172336_940.html?type=category&name=covid19&title=) and 25 February 2022 (<https://www.info.gov.hk/gia/general/202202/25/P2022022500816.htm>), positive cases detected by the Hospital Authority and testing contractors are now directly deemed as confirmed cases.

Figure 1(ii): Daily number and 7-day moving average of cases tested positive for SARS-CoV-2 virus by rapid antigen tests

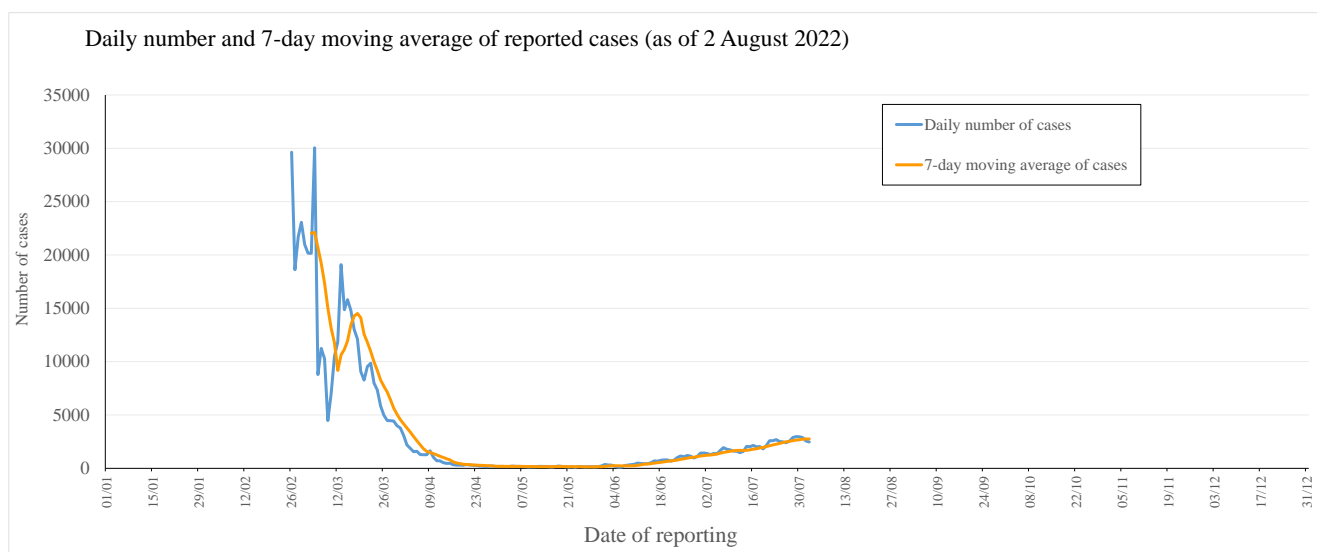
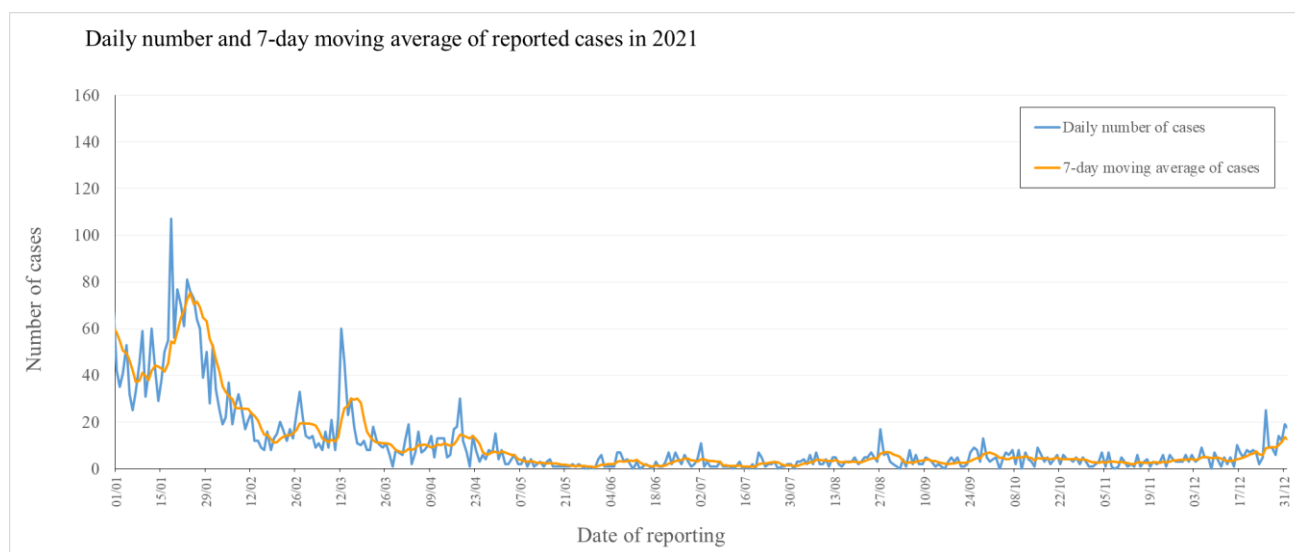
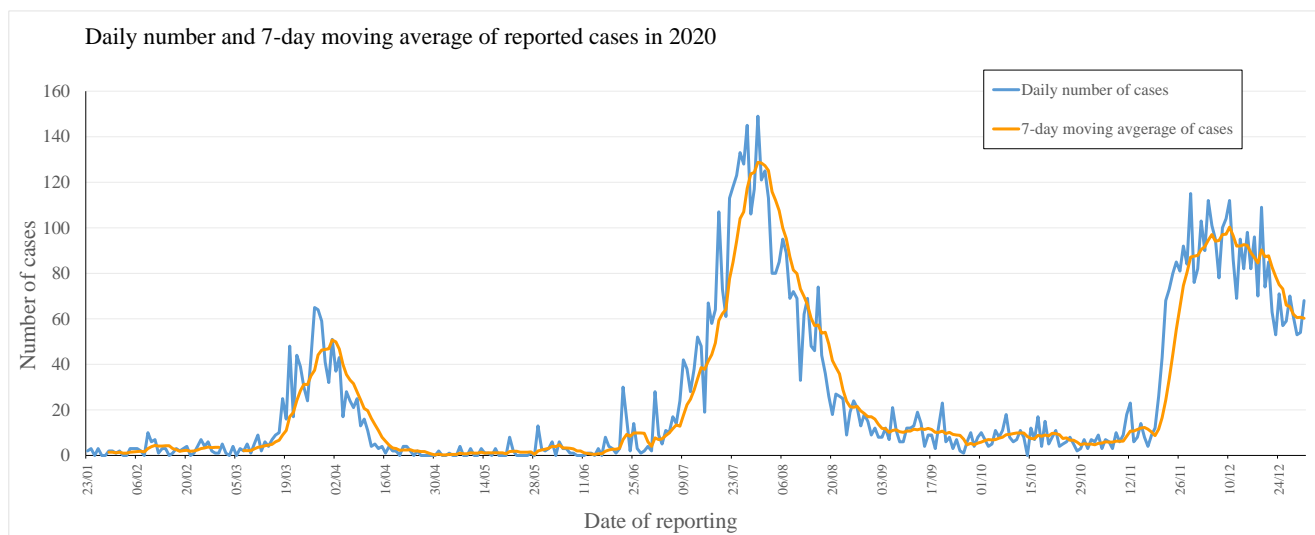


Figure 1(iii): Daily number and 7-day moving average of cases tested positive for SARS-CoV-2 virus by nucleic acid tests in 2021



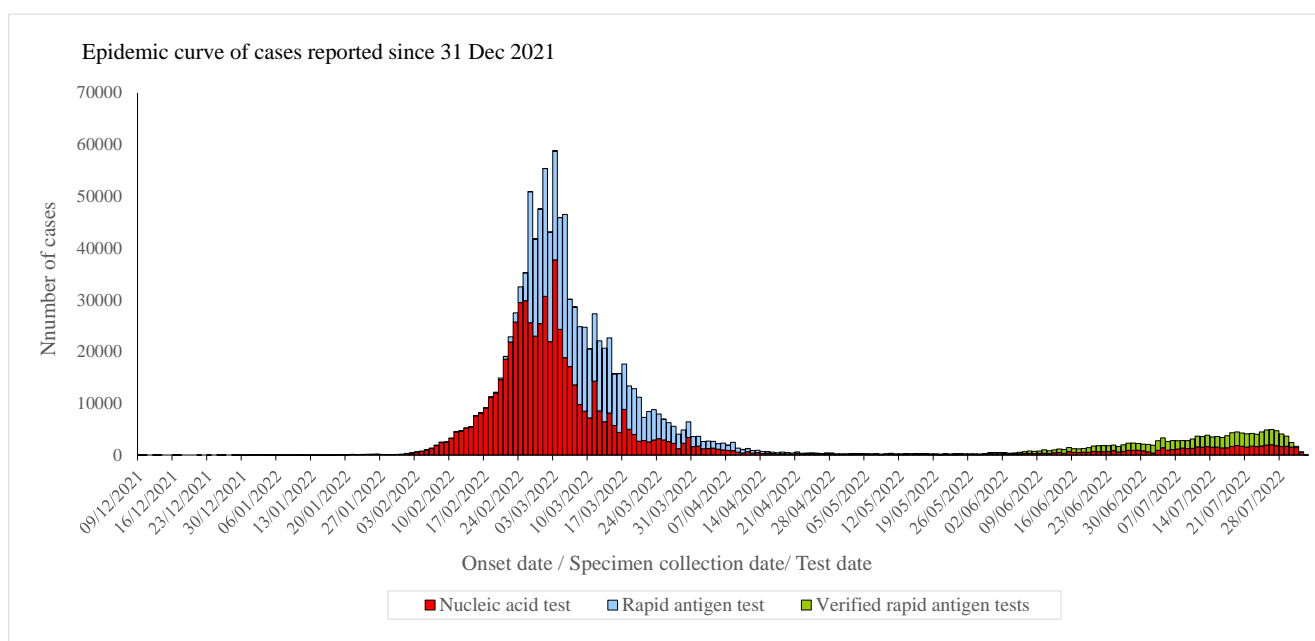
Note: Re-positive cases are excluded in Figure 1(iii).

Figure 1(iv): Daily number and 7-day moving average of cases tested positive for SARS-CoV-2 virus by nucleic acid tests in 2020



Note: Re-positive cases are excluded in Figure 1(iv).

Figure 2: Epidemic curve of cases tested positive for SARS-CoV-2 virus in Hong Kong since 31 December 2021



Note:

1. Specimen collection dates are used for cases without information of onset dates.
2. Cases still under investigation are excluded in Figure 2.

Figure 3: Daily number of cases tested positive for SARS-CoV-2 virus reported in the past 4 weeks

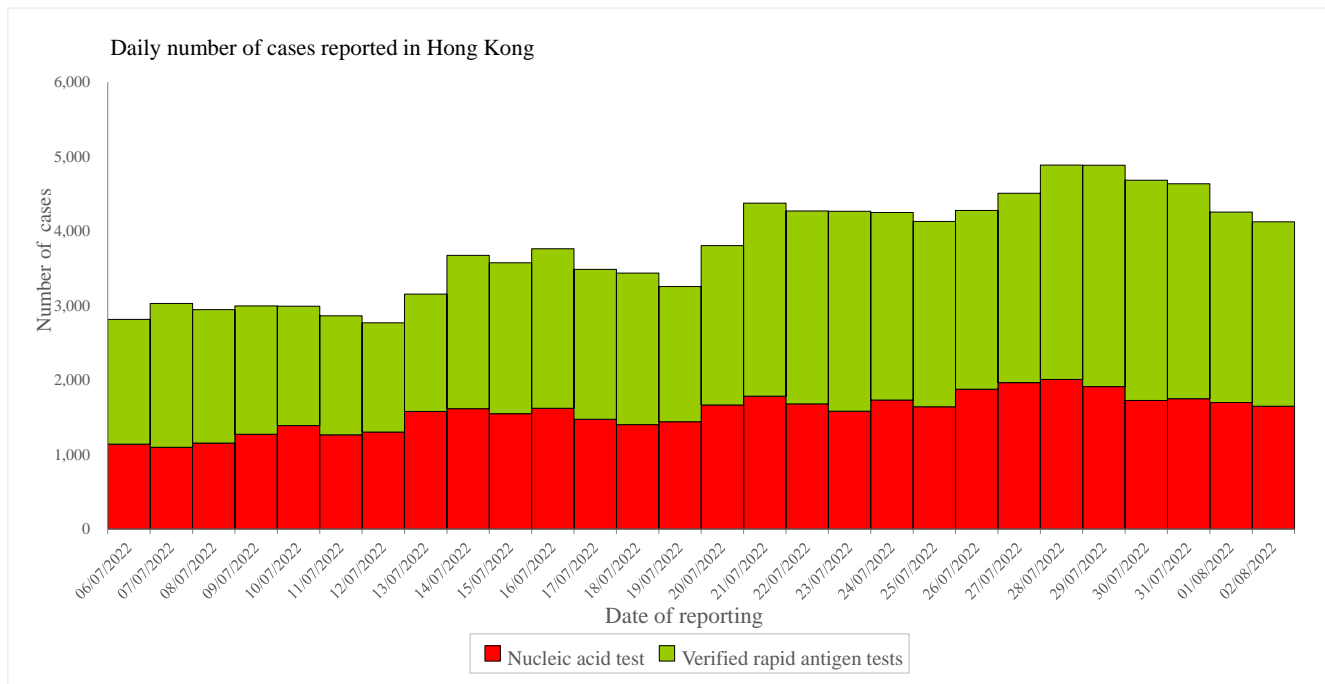


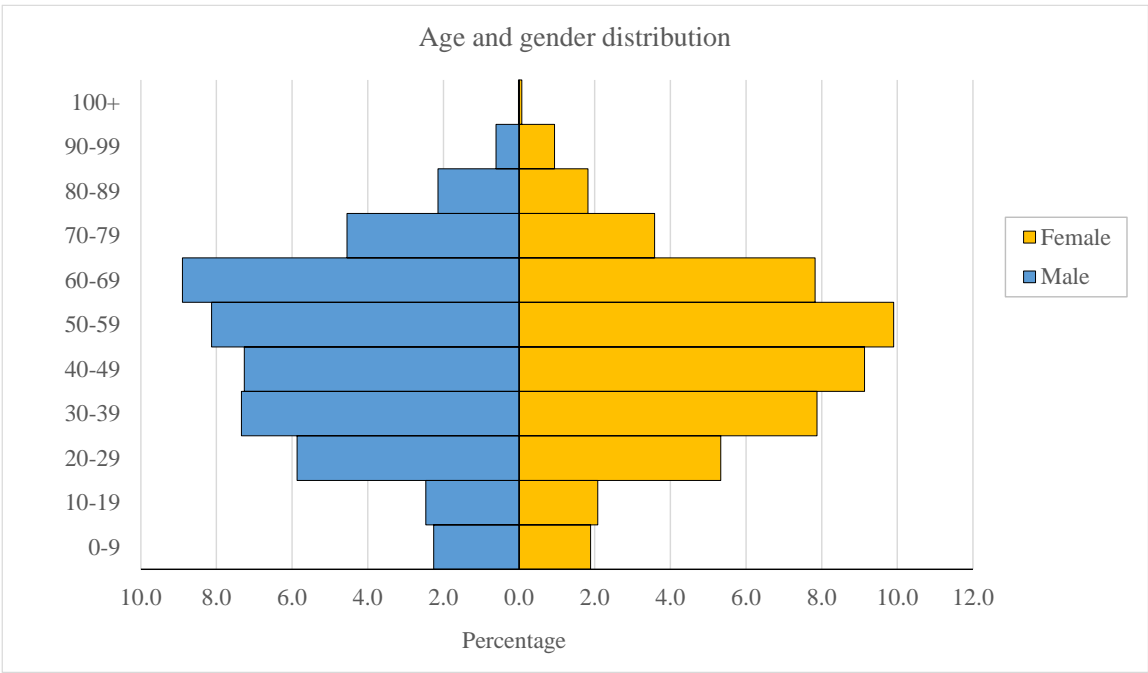
Table 1 shows the classification of cases reported since the 5th wave (since 31 December 2021).

Table 1: Number of cases tested positive for SARS-CoV-2 virus by nucleic acid tests and rapid antigen tests by classification

Reporting period	Imported case	Locally acquired case	Period total
Since the 5th wave	12193 (0.90%)	1337547 (99.10%)	1349740 (100.00%)
In the past 4 weeks			
6/7/2022 - 12/7/2022	1398 (6.85%)	19009 (93.15%)	20407 (100.00%)
13/7/2022 - 19/7/2022	1577 (6.48%)	22765 (93.52%)	24342 (100.00%)
20/7/2022 - 26/7/2022	1601 (5.45%)	27770 (94.55%)	29371 (100.00%)
27/7/2022 - 2/8/2022	1497 (4.68%)	30475 (95.32%)	31972 (100.00%)

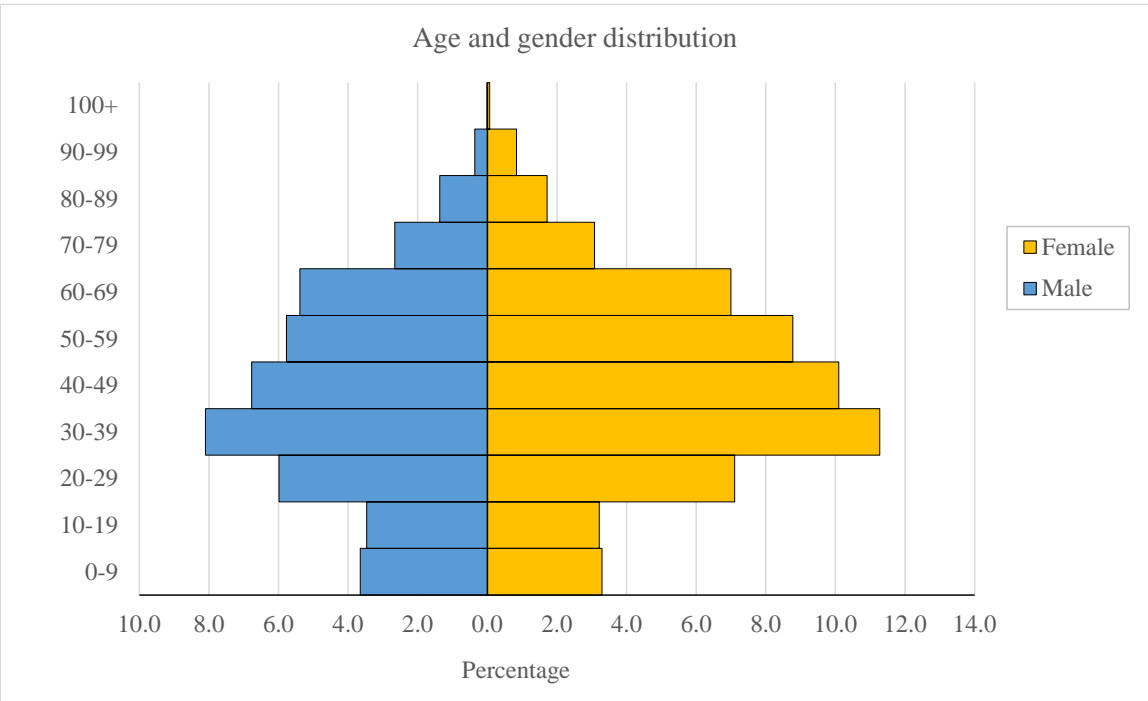
Figure 4 shows the age and gender distribution of the cases (since the 5th wave).

Figure 4(i): Age and gender distribution of cases tested positive for SARS-CoV-2 virus by nucleic acid tests in Hong Kong



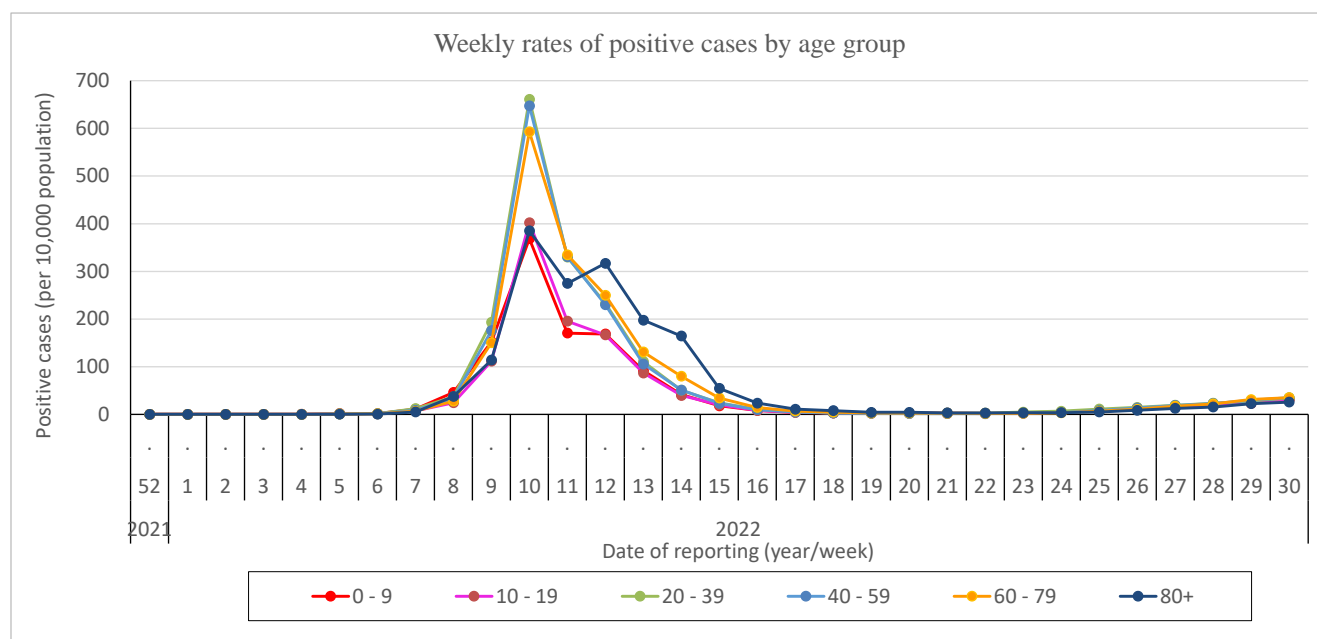
Note: Re-positive cases and cases pending investigation are excluded in Figure 4(i).

Figure 4(ii): Age and gender distribution of cases tested positive for SARS-CoV-2 virus by rapid antigen tests in Hong Kong



Source of data: Data from the Centre for Health Protection of the Department of Health with available information on age and gender.

Figure 5: Weekly rates of positive cases tested by nucleic acid tests and rapid antigen tests (by age group) since the 5th wave



Note:

1. Both imported and re-positive cases are excluded in Figure 5.
2. Data in Figure 5 may be subject to changes when there is new information available.
3. Figure 5 (with data as of the preceding week) will be updated every Tuesday.

Table 2 : Incidences of cases tested positive for SARS-CoV-2 virus by nucleic acid tests and rapid antigen tests by residential districts in 2022

Region	Cumulative Incidence	District	Cumulative Incidence	Apr	May	Jun	Jul
Hong Kong	903.2	Central and Western	764.4	27.6	12.3	55.0	85.3
		Wan Chai	676.4	23.8	8.1	52.9	83.0
		Eastern	969.1	43.9	8.1	39.2	115.7
		Southern	1040.6	45.2	7.3	45.8	127.9
Kowloon	1313.7	Kowloon City	1010.2	34.0	7.2	37.5	95.0
		Kwun Tong	1455.0	55.4	8.3	31.0	119.1
		Sham Shui Po	1316.3	41.0	9.8	28.3	102.5
		Wong Tai Sin	1464.3	65.5	6.8	26.4	112.9
		Yau Tsim Mong	1204.8	25.6	9.1	41.0	86.8
New Territories East	1105.8	Islands	962.7	35.1	7.8	41.3	135.0
		North	1147.6	69.6	12.3	37.6	147.9
		Sai Kung	980.3	39.4	9.8	39.2	124.8
		Sha Tin	1208.9	69.9	9.8	36.8	121.7
		Tai Po	1117.3	53.8	8.8	51.9	182.9
New Territories West	1254.8	Kwai Tsing	1410.3	57.2	9.1	25.9	101.0
		Tsuen Wan	1096.6	44.2	11.7	38.4	113.5
		Tuen Mun	1338.0	63.7	8.3	37.1	118.5
		Yuen Long	1153.2	44.3	8.9	34.9	126.2

Note:

1. Cases with multiple/ pending/ unknown residential address are excluded in Table 2.
2. Data in Table 2 are shown as number of cases per 10,000 population.
3. Table 2 (with data as of the preceding week) will be updated every Tuesday.

**Table 3 : Number of cases tested positive for SARS-CoV-2 virus reported
among schools in the past 4 weeks**

Reporting Period	No. of schools with case(s) reported	No. tested positive reported by schools	
		Student	Staff
03/07/2022 - 09/07/2022	860	1307	289
10/07/2022 - 16/07/2022	991	1740	370
17/07/2022 - 23/07/2022	1073	2210	457
24/07/2022 – 30/07/2022	1083	2387	471

Note:

1. Number of schools is deduplicated based on the reporting week.
2. Table 3 (with data as of the preceding week) will be updated every Tuesday.

**Table 4 : Number of cases tested positive for SARS-CoV-2 virus reported
among residential care homes (RCHs) in the past 4 weeks**

Reporting Period	No. of RCHs with case(s) reported	No. tested positive reported by RCHs	
		Resident	Staff
03/07/2022 - 09/07/2022	24	26	9
10/07/2022 - 16/07/2022	29	31	4
17/07/2022 - 23/07/2022	25	33	6
24/07/2022 – 30/07/2022	25	31	12

Note:

1. Number of RCHs is deduplicated based on the reporting week.
2. Table 4 (with data as of the preceding week) will be updated every Tuesday.

Since 31 December 2019, the CHP of the DH has recorded a total of 9520 fatal cases.

Since the 5th wave, a total of 9307 fatal cases have been recorded.

Table 5: Case fatality rate (CFR) by age group and vaccination status (since the 5th wave)

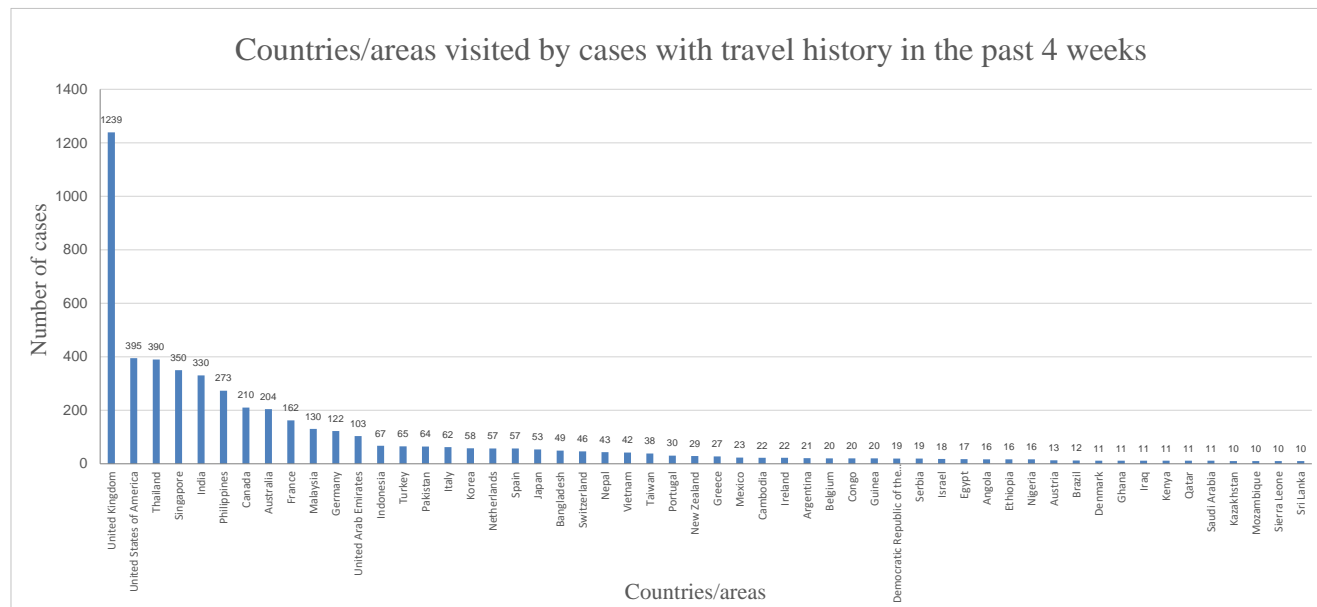
Age Group	CFR of locally acquired cases	CFR of locally acquired cases with history of at least 2 doses of COVID-19 vaccine	CFR of locally acquired cases with history of 1 dose of COVID-19 vaccine or unvaccinated
0-9	0.01%	0.00%	0.01%
10-19	0.01%	0.00%	0.01%
20-29	0.01%	0.00%	0.03%
30-39	0.01%	0.00%	0.04%
40-49	0.03%	0.01%	0.13%
50-59	0.12%	0.04%	0.53%
60-69	0.40%	0.11%	1.28%
70-79	1.65%	0.43%	3.60%
80+	9.79%	3.05%	13.16%
Overall	0.70%	0.13%	2.19%

Source of data: Data from the Centre for Health Protection of the Department of Health with available information on age and vaccination status.

Note: Table 5 (with data as of the preceding week) will be updated every Tuesday.

Figure 6 shows the countries/areas visited by the cases tested positive by nucleic acid tests reported in the past 4 weeks with travel history outside Hong Kong during the incubation period.

Figure 6: Countries/areas visited by cases tested positive by nucleic acid tests reported in the past 4 weeks with travel history



Note:

1. Some cases had visited more than one country/area.
2. Re-positive cases are excluded in Figure 6.
3. Only countries/ areas visited by 10 or more cases are included in Figure 6.