

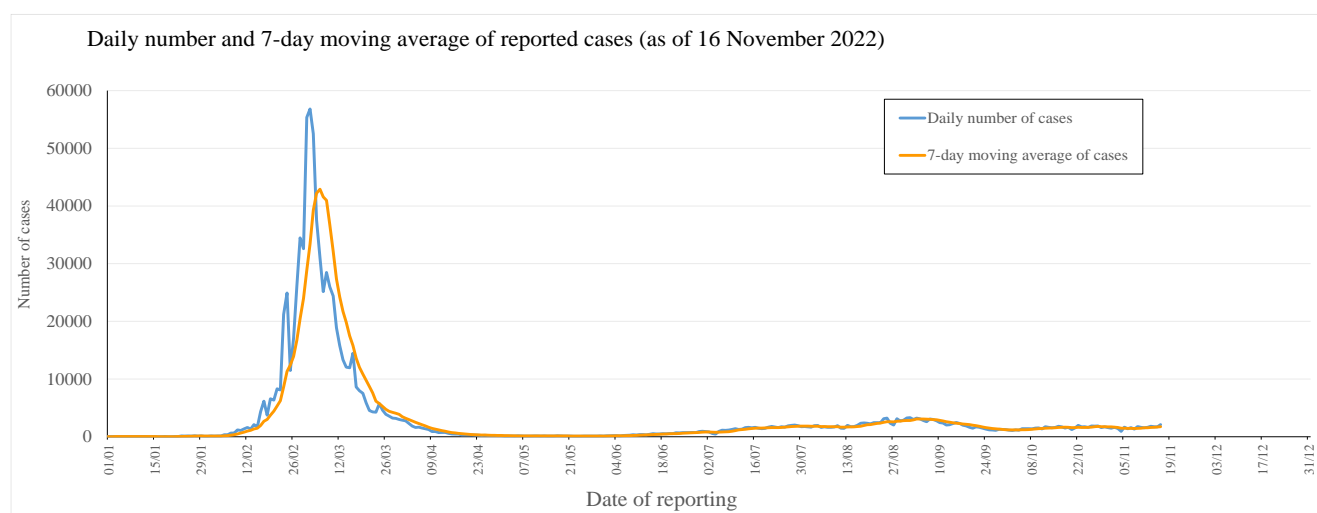
Latest situation of COVID-19 (as of 16 November 2022)

The Centre for Health Protection (CHP) of the Department of Health (DH) today (16 November) announced the latest epidemic situation of COVID-19. As of 0.00am, 16 November 2022, the CHP was investigating 6139 additional locally acquired cases tested positive for the SARS-CoV-2 virus, including 1638 cases tested positive by nucleic acid tests and 4501 cases tested positive by rapid antigen tests (RATs) in the past 24 hours. Separately, 517 additional imported cases were reported, including 465 cases tested positive by nucleic acid tests and 52 cases tested positive by RATs. So far, Hong Kong has recorded a total of 1023460 and 981365 cases tested positive by nucleic acid tests and RATs respectively for the SARS-CoV-2 virus.

Since the 5th wave (31 December 2021), 1010829 cases and 981365 cases were tested positive by nucleic acid tests and rapid antigen tests respectively.

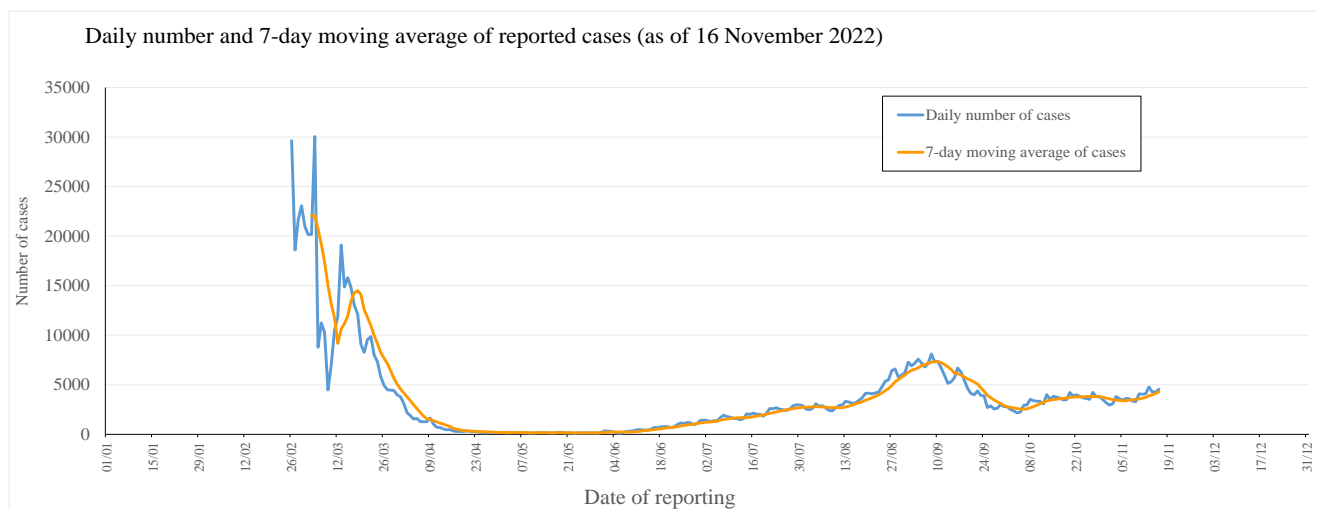
In the recent 7-day period from 10 to 16 November 2022, an average of 1734.7 cases by nucleic acid tests were reported per day, as compared with 1432.7 cases per day reported in the previous 7-day period from 3 to 9 November 2022 (Figure 1(i)).

Figure 1(i): Daily number and 7-day moving average of cases tested positive for SARS-CoV-2 virus by nucleic acid tests in 2022



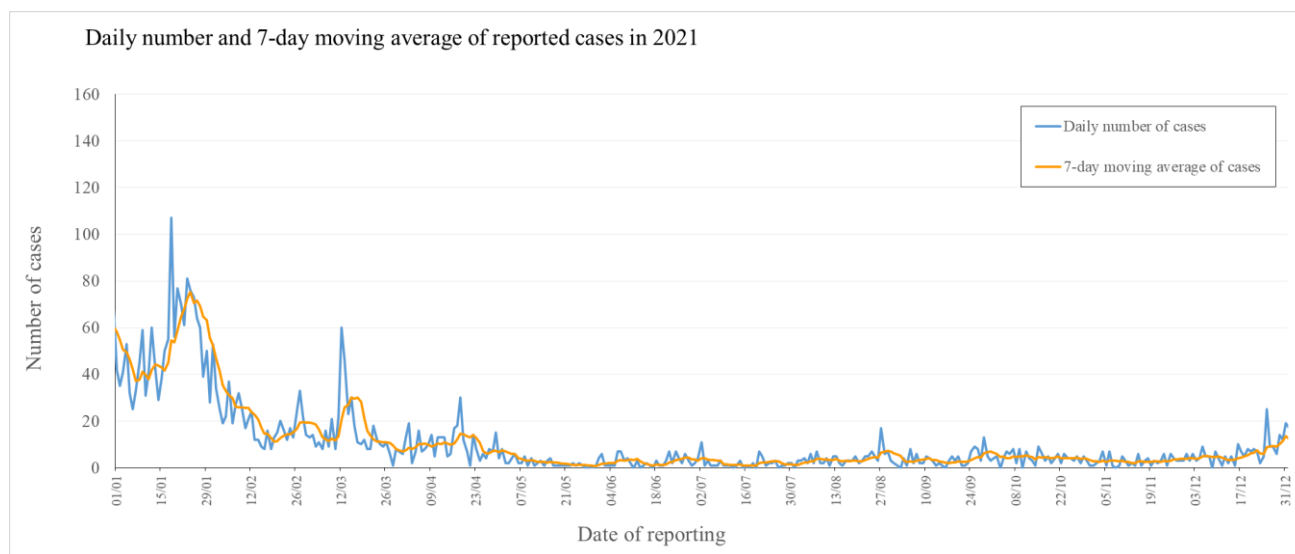
Note: Re-positive cases are excluded in Figure 1(i).

Figure 1(ii): Daily number and 7-day moving average of cases tested positive for SARS-CoV-2 virus by rapid antigen tests



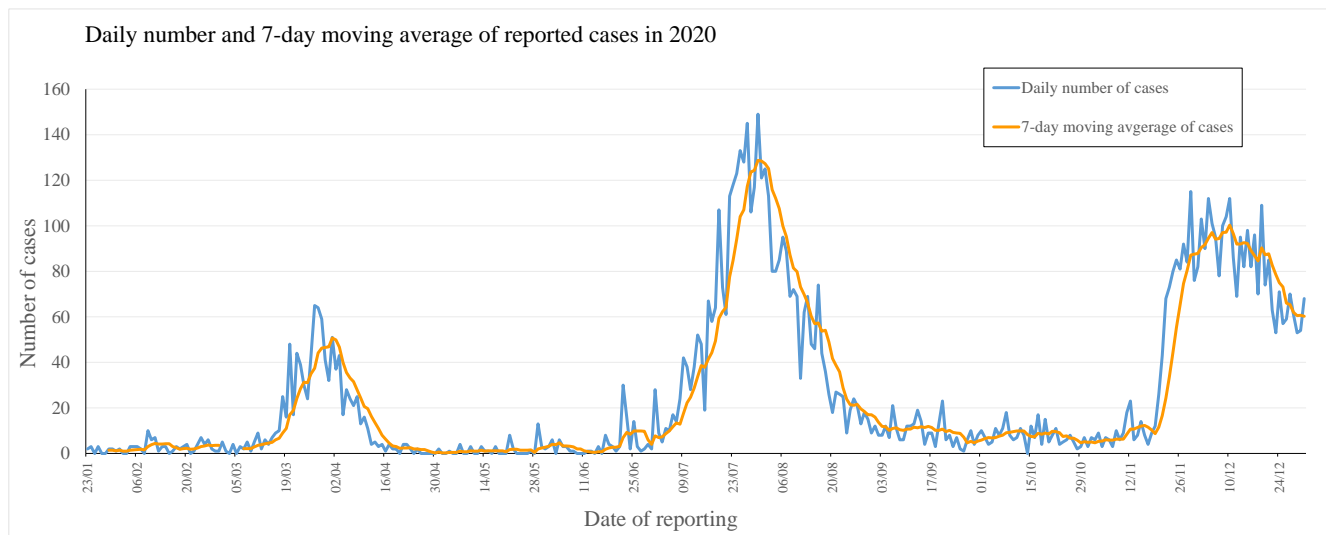
Note: Re-positive cases are excluded in Figure 1(ii).

Figure 1(iii): Daily number and 7-day moving average of cases tested positive for SARS-CoV-2 virus by nucleic acid tests in 2021



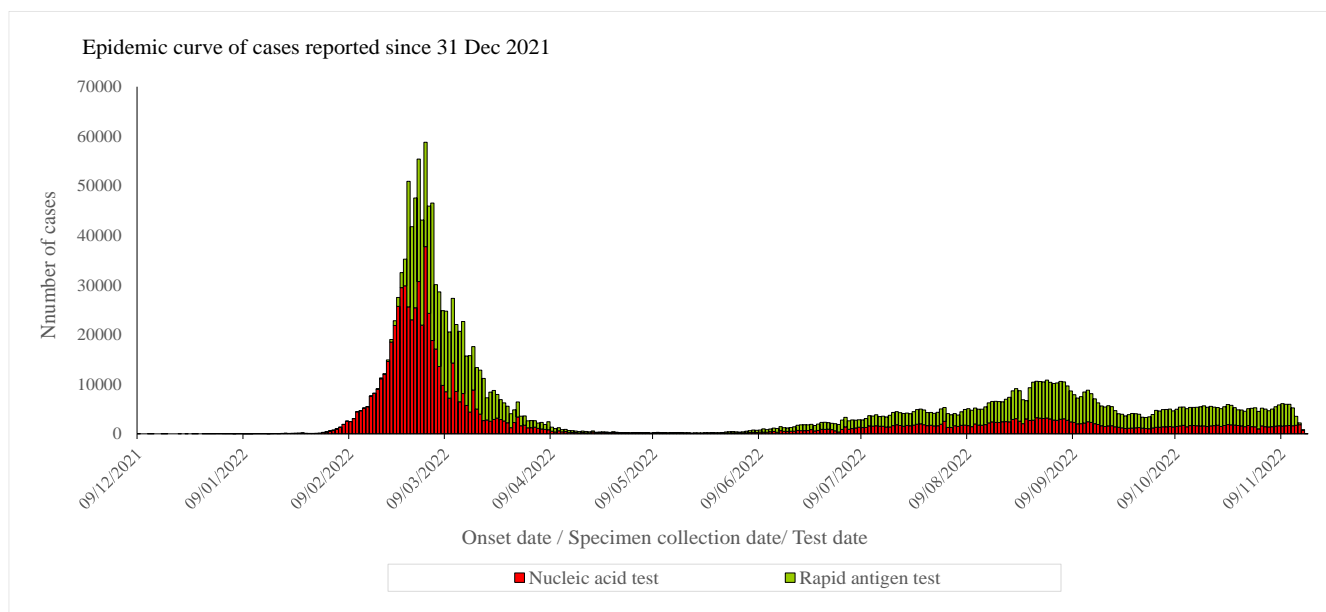
Note: Re-positive cases are excluded in Figure 1(iii).

Figure 1(iv): Daily number and 7-day moving average of cases tested positive for SARS-CoV-2 virus by nucleic acid tests in 2020



Note: Re-positive cases are excluded in Figure 1(iv).

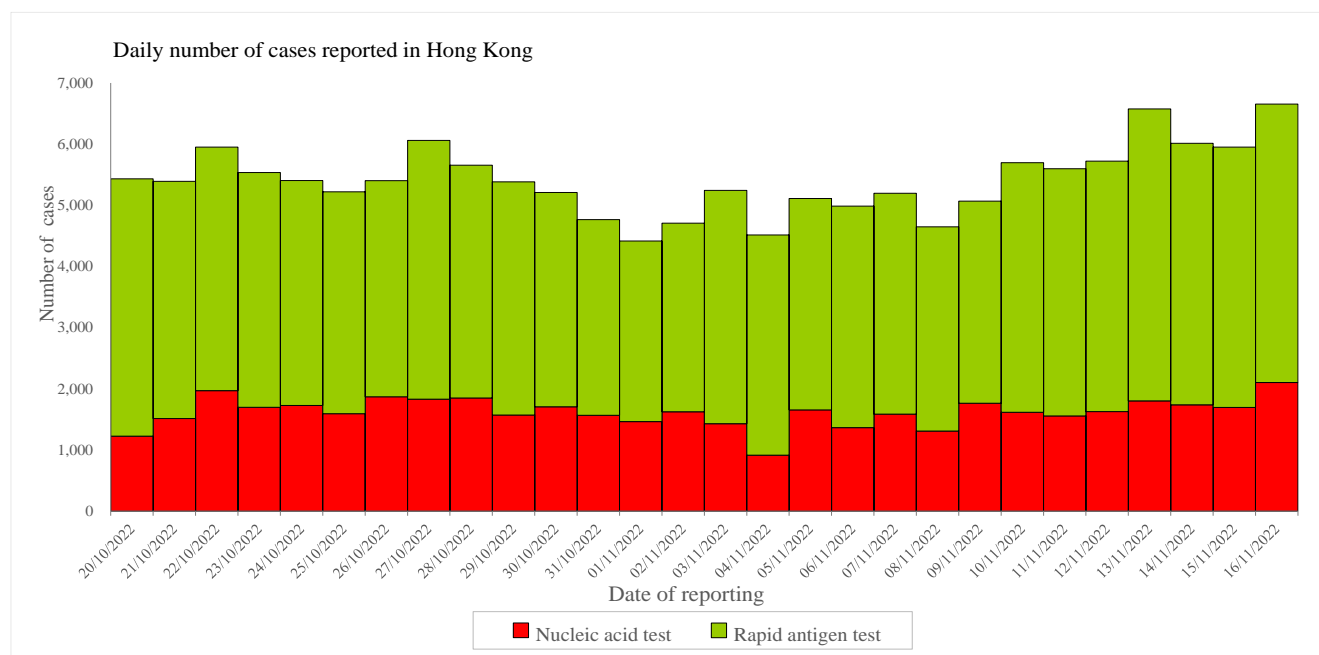
Figure 2: Epidemic curve of cases tested positive for SARS-CoV-2 virus in Hong Kong since 31 December 2021



Note:

1. Specimen collection dates are used for cases without information of onset dates.
2. Cases still under investigation are excluded in Figure 2.
3. Starting from 29 August 2022, the CHP only verifies cases reported via the "Declaration System for individuals tested positive for COVID-19 using Rapid Antigen Test" by sampling with nucleic acid test.

Figure 3: Daily number of cases tested positive for SARS-CoV-2 virus reported in the past 4 weeks



Note:

Starting from 29 August 2022, the CHP only verifies cases reported via the "Declaration System for individuals tested positive for COVID-19 using Rapid Antigen Test" by sampling with nucleic acid test.

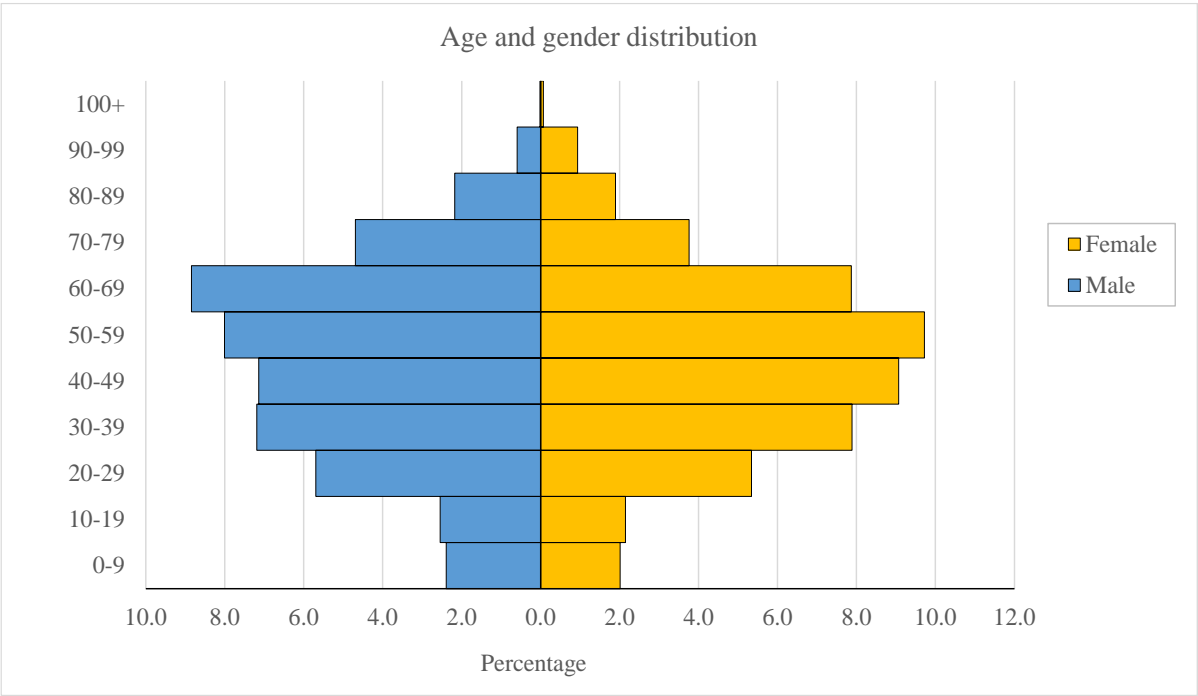
Table 1 shows the classification of cases reported since the 5th wave (since 31 December 2021).

Table 1: Number of cases tested positive for SARS-CoV-2 virus by nucleic acid tests and rapid antigen tests by classification

Reporting period	Imported case	Locally acquired case	Period total
Since the 5th wave	42485 (2.13%)	1949709 (97.87%)	1992194 (100.00%)
In the past 4 weeks			
20/10/2022-26/10/2022	2779 (7.25%)	35565 (92.75%)	38344 (100.00%)
27/10/2022-02/11/2022	2929 (8.09%)	33275 (91.91%)	36204 (100.00%)
03/11/2022-09/11/2022	3122 (8.98%)	31653 (91.02%)	34775 (100.00%)
10/11/2022-16/11/2022	3345 (7.92%)	38870 (92.08%)	42215 (100.00%)

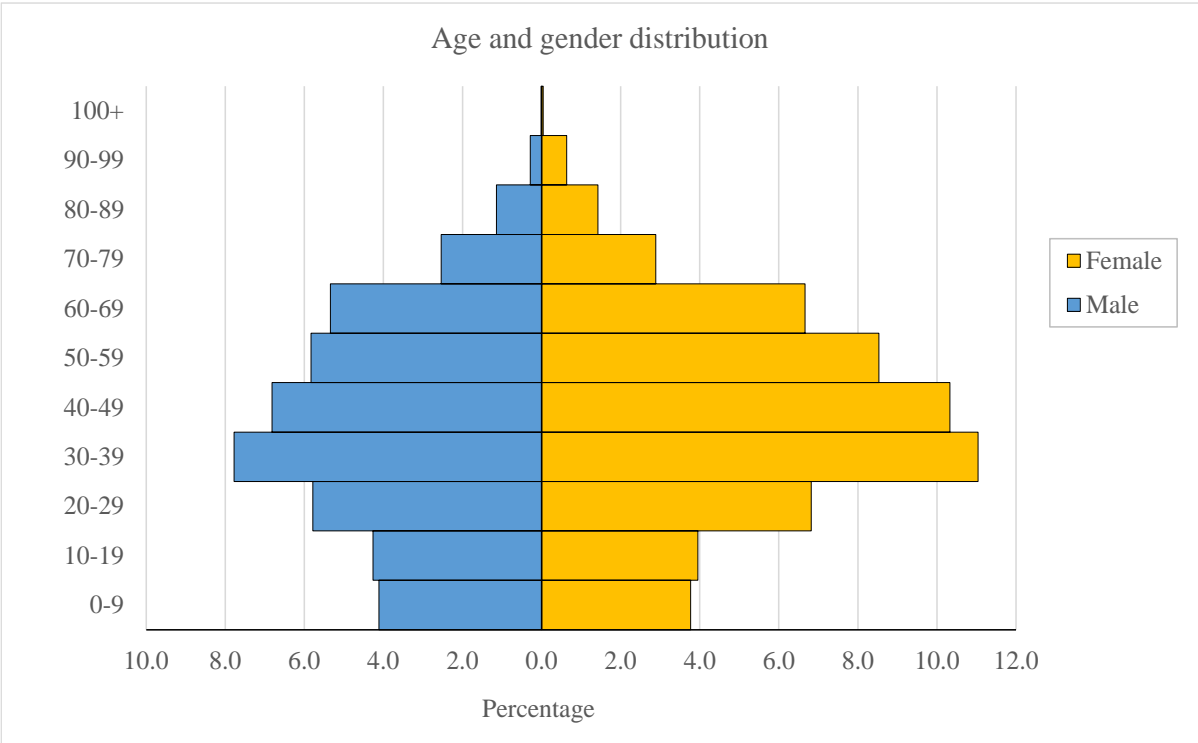
Figure 4 shows the age and gender distribution of the cases (since the 5th wave).

Figure 4(i): Age and gender distribution of cases tested positive for SARS-CoV-2 virus by nucleic acid tests in Hong Kong



Note: Re-positive cases and cases pending investigation are excluded in Figure 4(i).

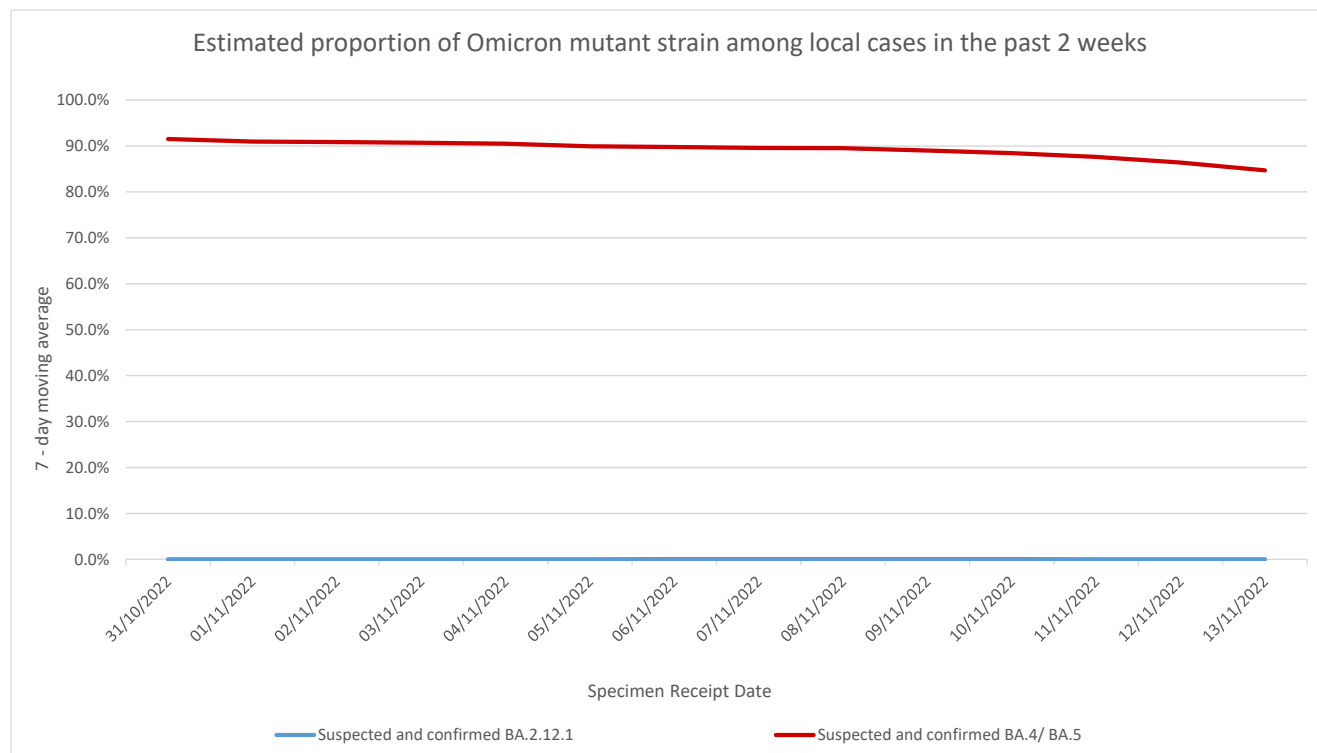
Figure 4(ii): Age and gender distribution of cases tested positive for SARS-CoV-2 virus by rapid antigen tests in Hong Kong



Source of data: Data from the Centre for Health Protection of the Department of Health with available information on age and gender.

Among the specimens received by the Public Health Laboratory Services Branch (PHLSB) during 7 to 13 November for verification testing of local cases, about 0% and 84.7% of them (7-day moving average) are related to the sub-lineages BA.2.12.1 and BA.4/BA.5* (including suspected cases) of the Omicron mutant strain respectively.

Figure 5: Estimated proportion of Omicron mutant strain among local cases in the past 2 weeks



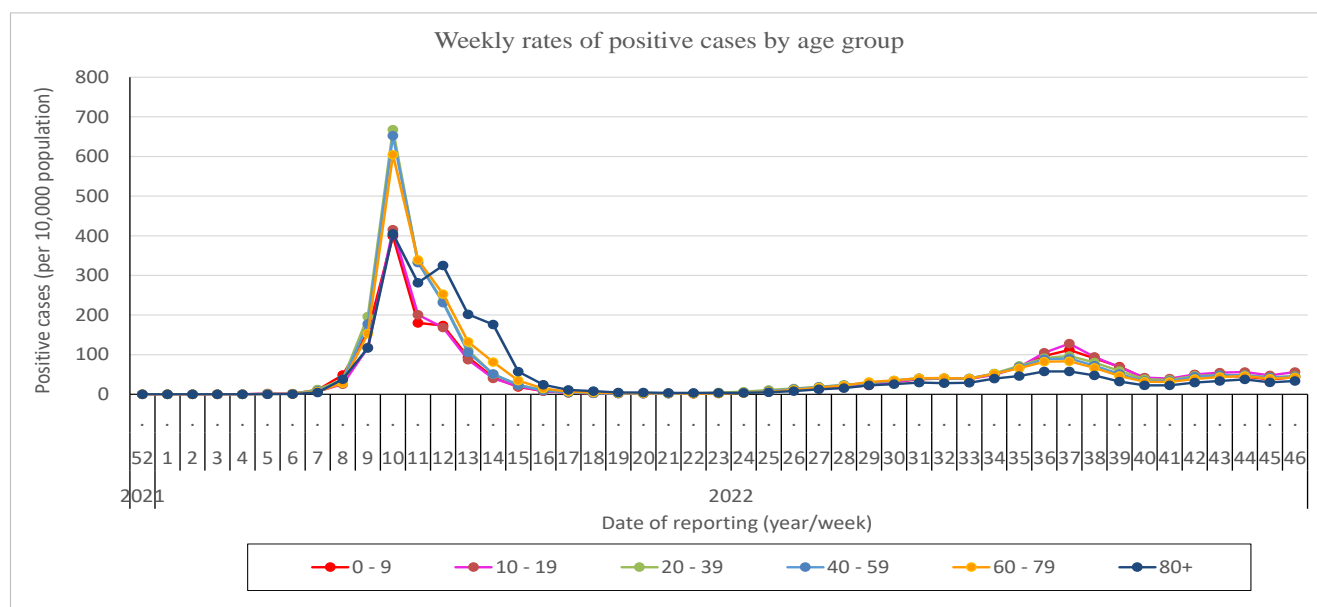
Note:

1. Related percentages are estimated from the specimens received by the PHLSB for verification testing of local cases.
2. Data may be subject to changes when there is new information available.

*Based on sampling by PHLSB for further characterisation, among specimens related to BA.4/BA.5 received from 7 – 13 November 2022, 95.2% were BA.5. (to be updated weekly)

In addition, as of 0.00am, 16 November, PHLSB had identified 221 cases of sub-lineage XBB, 6 of XBD, 8 of BA.2.75.2, 7 of BA.4.6, 12 of BF.7 and 34 of BQ.1.1 among imported cases in Hong Kong, while 42 cases of sub-lineage XBB, 15 of XBD, 1 of BA.2.75.2, 1 of BF.7 and 45 of BQ.1.1 have also been detected among local cases.

Figure 6: Weekly rates of positive cases tested by nucleic acid tests and rapid antigen tests (by age group) since the 5th wave



Note:

1. Both imported and re-positive cases are excluded in Figure 6.
2. Data in Figure 6 may be subject to changes when there is new information available.
3. Figure 6 (with data as of the preceding week) will be updated every Tuesday.

Table 2: Incidences of cases tested positive for SARS-CoV-2 virus by nucleic acid tests and rapid antigen tests by residential districts in 2022

Region	Cumulative Incidence	District	Cumulative Incidence	Aug	Sep	Oct	Nov
Hong Kong	1814.8	Central and Western	1529.1	147.9	217.3	139.2	58.0
		Wan Chai	1418.4	162.0	213.7	146.2	55.1
		Eastern	1991.7	224.4	285.2	191.4	80.1
		Southern	1968.2	200.9	265.1	187.4	65.8
Kowloon	2283.2	Kowloon City	1921.3	199.7	258.0	166.5	66.2
		Kwun Tong	2532.4	232.8	294.8	180.7	74.0
		Sham Shui Po	2232.9	178.9	238.5	140.8	58.4
		Wong Tai Sin	2487.8	221.1	284.8	162.9	67.3
		Yau Tsim Mong	2018.9	166.2	206.0	148.7	58.6
New Territories East	2147.3	Islands	1793.8	204.1	234.3	156.8	75.2
		North	2231.5	286.0	340.7	197.8	84.2
		Sai Kung	2062.8	253.6	334.7	194.6	76.9
		Sha Tin	2263.1	259.9	330.1	184.6	70.3
		Tai Po	2148.2	261.2	298.2	185.2	88.9
New Territories West	2246.8	Kwai Tsing	2402.6	181.7	241.5	149.5	63.4
		Tsuen Wan	2097.1	214.3	273.4	183.0	68.8
		Tuen Mun	2353.2	249.6	280.7	169.9	72.5
		Yuen Long	2123.6	238.3	301.0	174.6	72.1

Note:

1. Cases with multiple/ pending/ unknown residential address are excluded in Table 2.
2. Data in Table 2 are shown as number of cases per 10,000 population.
3. Table 2 (with data as of the preceding week) will be updated every Tuesday.

**Table 3 : Number of cases tested positive for SARS-CoV-2 virus reported
among schools in the past 4 weeks**

Reporting Period	No. of schools with case(s) reported	No. tested positive reported by schools	
		Student	Staff
16/10/2022 - 22/10/2022	1205	3585	601
23/10/2022 - 29/10/2022	1229	3447	676
30/10/2022 - 05/11/2022	1130	3002	622
06/11/2022 - 12/11/2022	1237	3871	569

Note:

1. Number of schools is deduplicated based on the reporting week.
2. Table 3 (with data as of the preceding week) will be updated every Tuesday.

**Table 4 : Number of cases tested positive for SARS-CoV-2 virus reported
among residential care homes (RCHs) in the past 4 weeks**

Reporting Period	No. of RCHs with case(s) reported	No. tested positive reported by RCHs	
		Resident	Staff
16/10/2022 - 22/10/2022	47	66	5
23/10/2022 - 29/10/2022	47	64	5
30/10/2022 - 05/11/2022	43	64	3
06/11/2022 - 12/11/2022	80	129	10

Note:

1. Number of RCHs is deduplicated based on the reporting week.
2. Table 4 (with data as of the preceding week) will be updated every Tuesday.

Since 31 December 2019, the CHP of the DH has recorded a total of 10557 fatal cases.

Since the 5th wave, a total of 10344 fatal cases have been recorded.

Table 5: Case fatality rate (CFR) by age group and vaccination status (since the 5th wave)

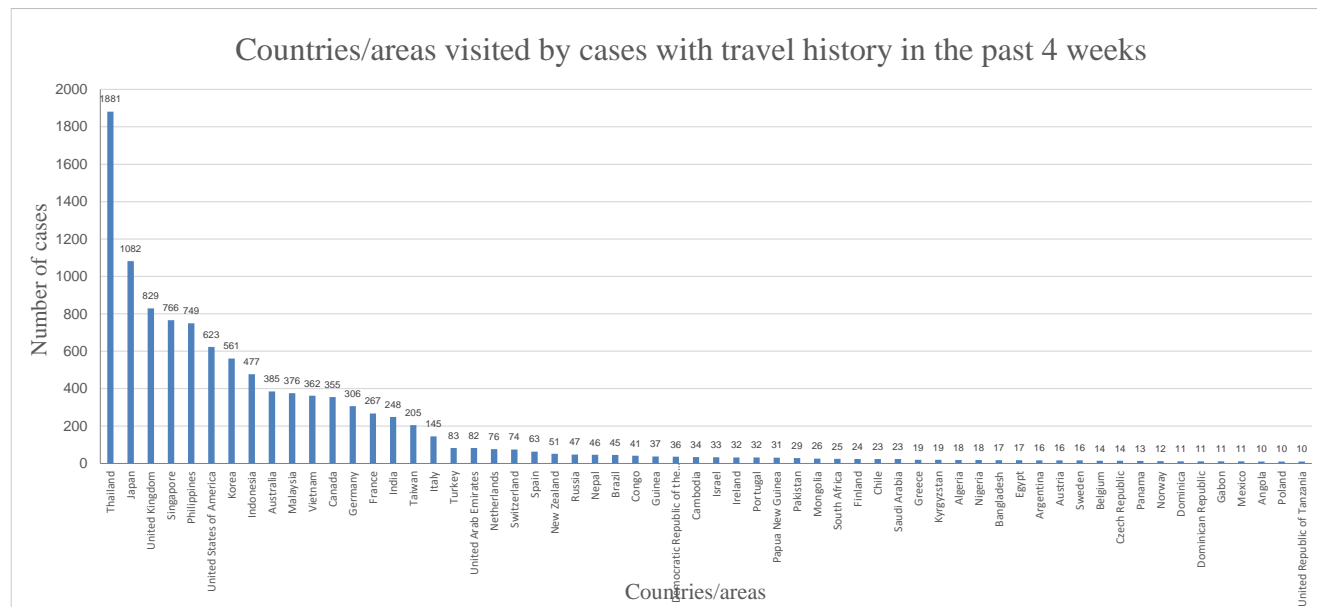
Age Group	CFR of locally acquired cases	CFR of locally acquired cases with history of at least 2 doses of COVID-19 vaccine	CFR of locally acquired cases with history of 1 dose of COVID-19 vaccine or unvaccinated
0-9	0.01%	0.00%	0.01%
10-19	0.00%	0.00%	0.01%
20-29	0.01%	0.00%	0.02%
30-39	0.01%	0.00%	0.03%
40-49	0.02%	0.01%	0.11%
50-59	0.09%	0.04%	0.48%
60-69	0.31%	0.10%	1.19%
70-79	1.25%	0.38%	3.28%
80+	8.02%	2.67%	12.45%
Overall	0.53%	0.12%	1.89%

Source of data: Data from the Centre for Health Protection of the Department of Health with available information on age and vaccination status.

Note: Table 5 (with data as of the preceding week) will be updated every Tuesday.

Figure 7 shows the countries/areas visited by the cases tested positive by nucleic acid tests reported in the past 4 weeks with travel history outside Hong Kong during the incubation period.

Figure 7: Countries/areas visited by cases tested positive by nucleic acid tests reported in the past 4 weeks with travel history



Note:

1. Some cases had visited more than one country/area.
2. Re-positive cases are excluded in Figure 7.
3. Only countries/ areas visited by 10 or more cases are included in Figure 7.