

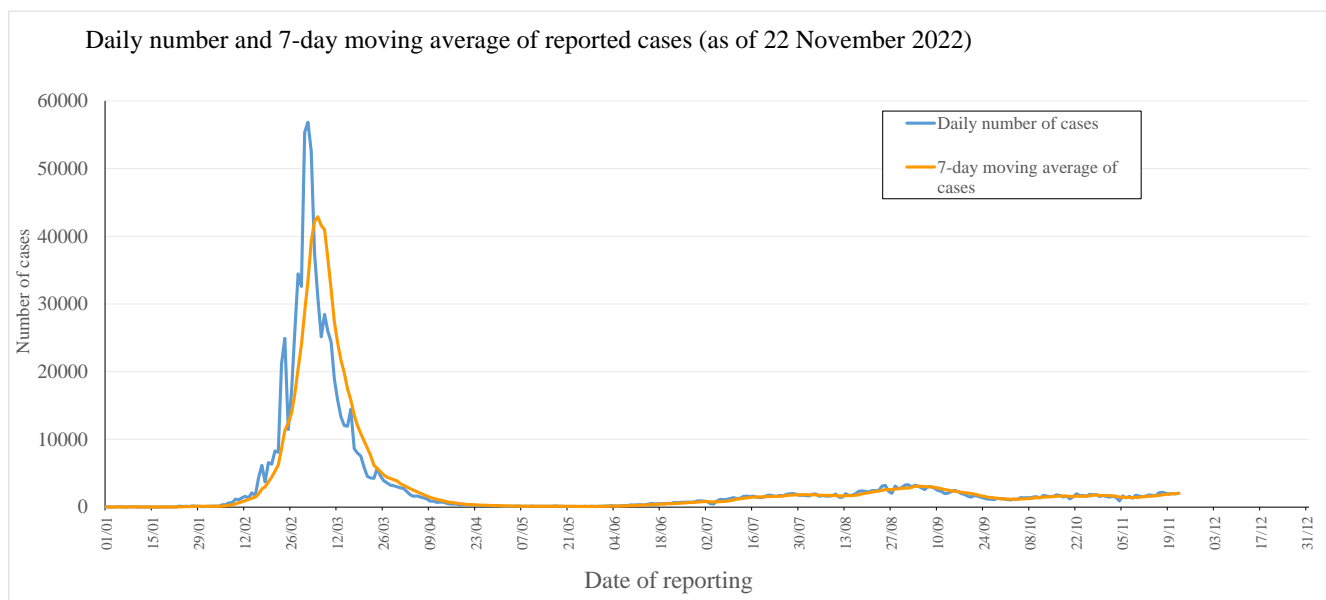
Latest situation of COVID-19 (as of 22 November 2022)

The Centre for Health Protection (CHP) of the Department of Health (DH) today (22 November) announced the latest epidemic situation of COVID-19. As of 0.00am, 22 November 2022, the CHP was investigating 6505 additional locally acquired cases tested positive for the SARS-CoV-2 virus, including 1489 cases tested positive by nucleic acid tests and 5016 cases tested positive by rapid antigen tests (RATs) in the past 24 hours. Separately, 634 additional imported cases were reported, including 581 cases tested positive by nucleic acid tests and 53 cases tested positive by RATs. So far, Hong Kong has recorded a total of 1035640 and 1015466 cases tested positive by nucleic acid tests and RATs respectively for the SARS-CoV-2 virus.

Since the 5th wave (31 December 2021), 1023009 cases and 1015466 cases were tested positive by nucleic acid tests and rapid antigen tests respectively.

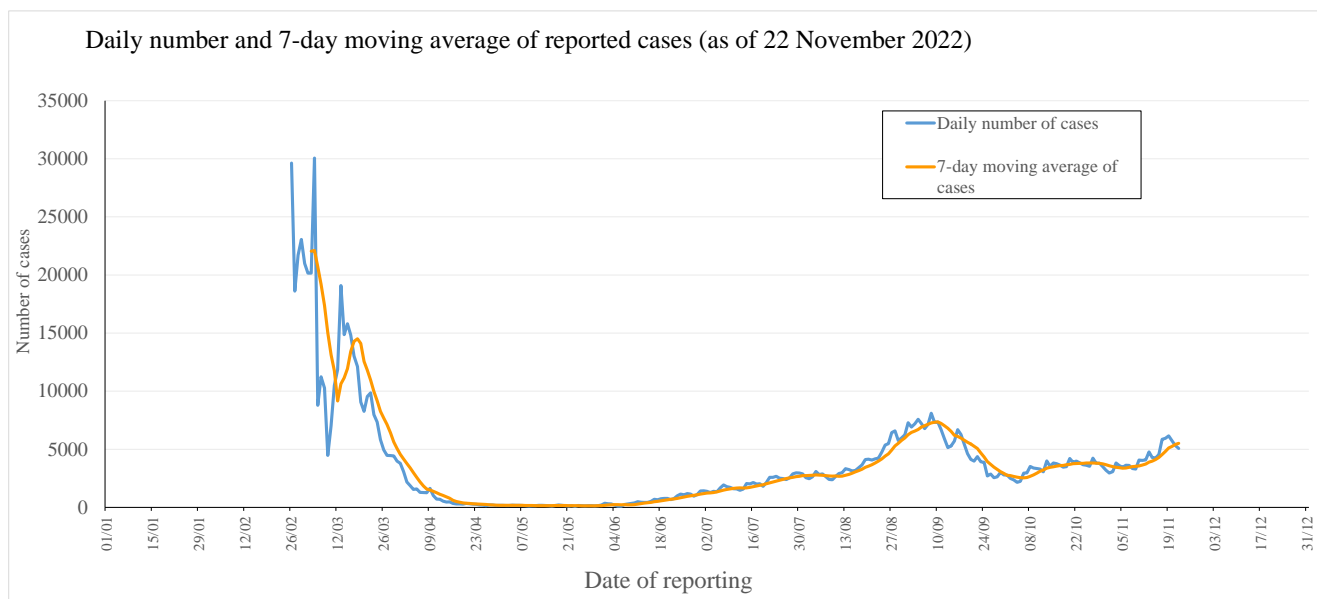
In the recent 7-day period from 16 to 22 November 2022, an average of 2040.4 cases by nucleic acid tests were reported per day, as compared with 1686.4 cases per day reported in the previous 7-day period from 9 to 15 November 2022 (Figure 1(i)).

Figure 1(i): Daily number and 7-day moving average of cases tested positive for SARS-CoV-2 virus by nucleic acid tests in 2022



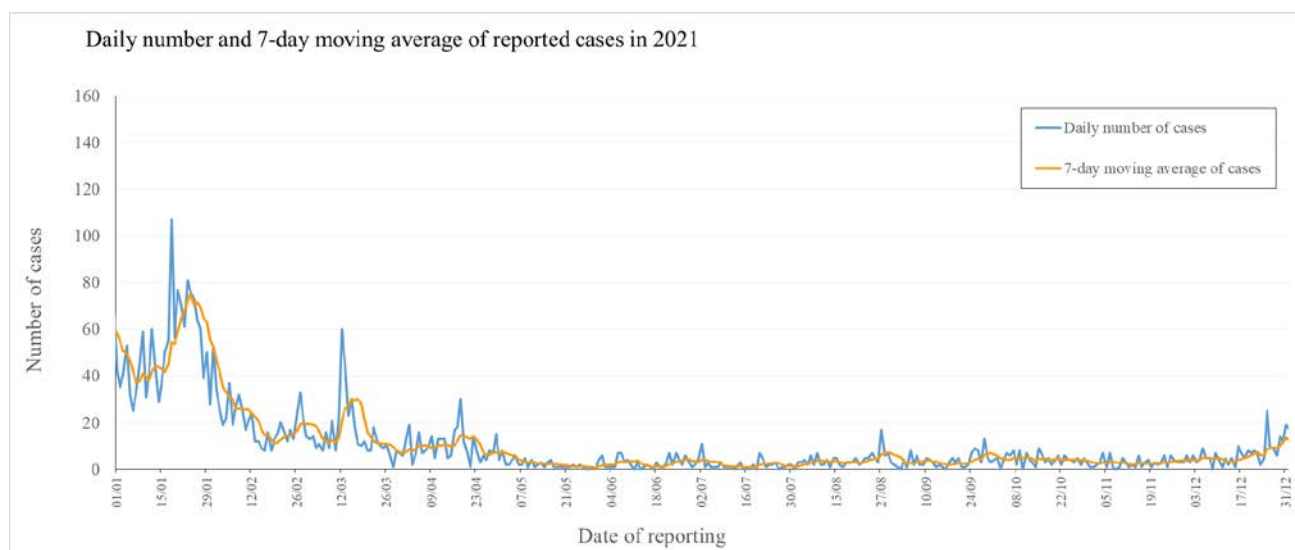
Note: Re-positive cases are excluded in Figure 1(i).

Figure 1(ii): Daily number and 7-day moving average of cases tested positive for SARS-CoV-2 virus by rapid antigen tests



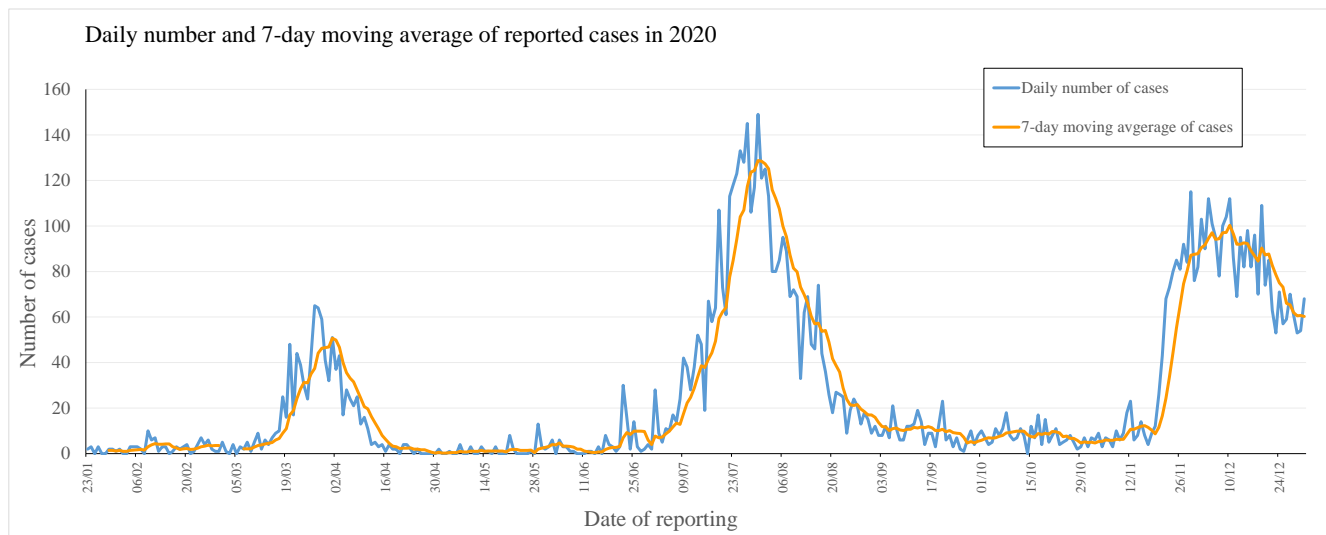
Note: Re-positive cases are excluded in Figure 1(ii).

Figure 1(iii): Daily number and 7-day moving average of cases tested positive for SARS-CoV-2 virus by nucleic acid tests in 2021



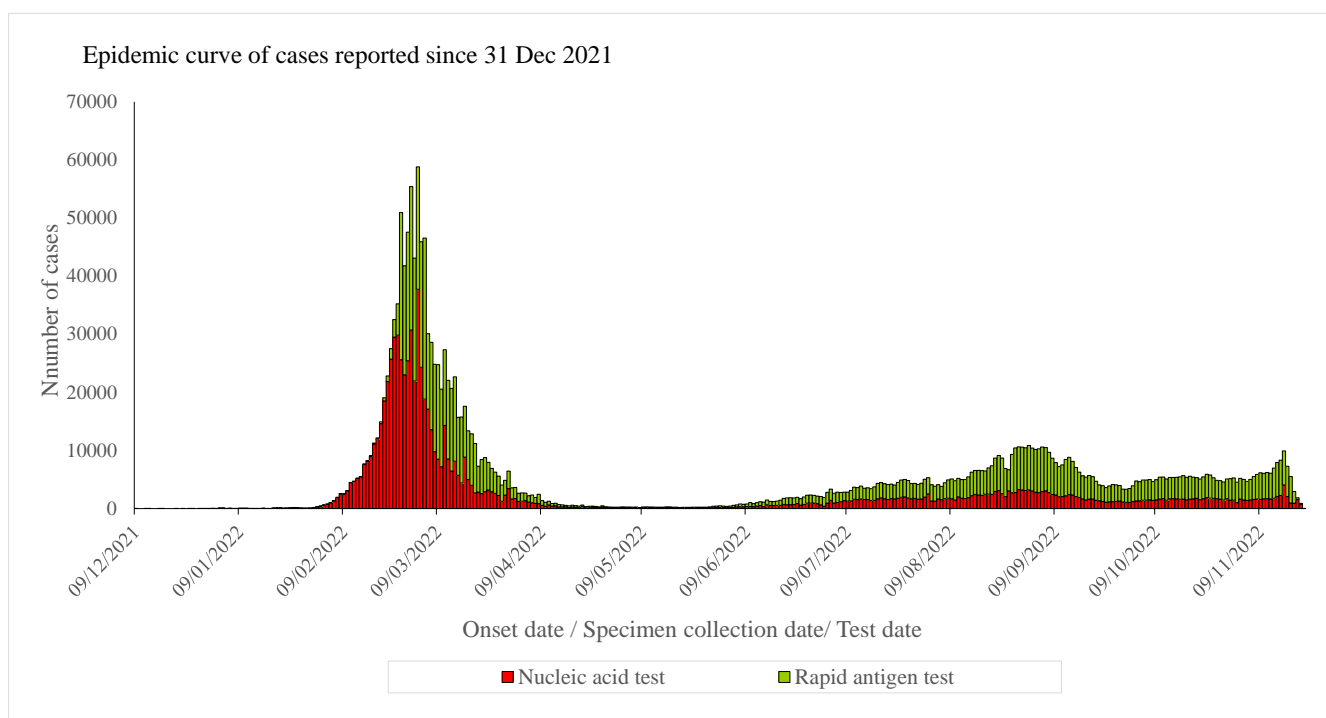
Note: Re-positive cases are excluded in Figure 1(iii).

Figure 1(iv): Daily number and 7-day moving average of cases tested positive for SARS-CoV-2 virus by nucleic acid tests in 2020



Note: Re-positive cases are excluded in Figure 1(iv).

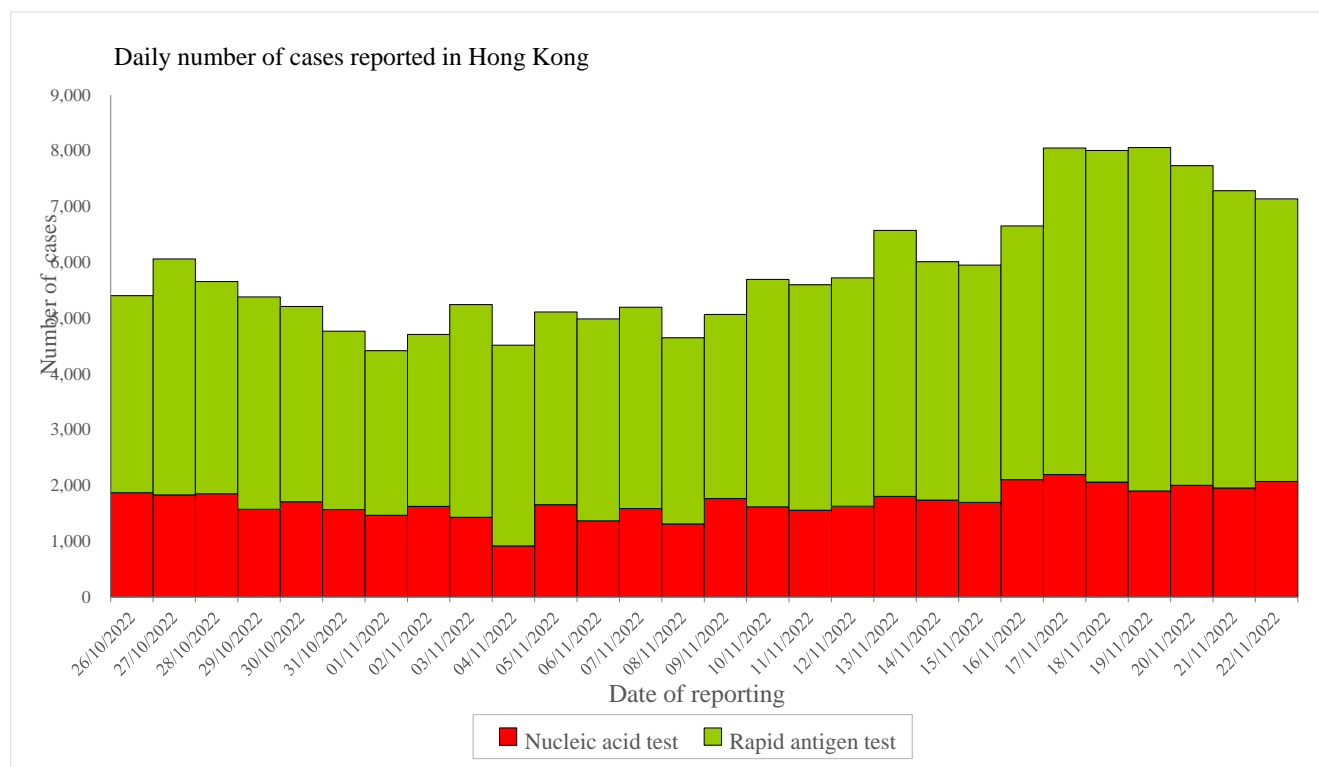
Figure 2: Epidemic curve of cases tested positive for SARS-CoV-2 virus in Hong Kong since 31 December 2021



Note:

1. Specimen collection dates are used for cases without information of onset dates.
2. Cases still under investigation are excluded in Figure 2.
3. Starting from 29 August 2022, the CHP only verifies cases reported via the "Declaration System for individuals tested positive for COVID-19 using Rapid Antigen Test" by sampling with nucleic acid test.

Figure 3: Daily number of cases tested positive for SARS-CoV-2 virus reported in the past 4 weeks



Note:

Starting from 29 August 2022, the CHP only verifies cases reported via the "Declaration System for individuals tested positive for COVID-19 using Rapid Antigen Test" by sampling with nucleic acid test.

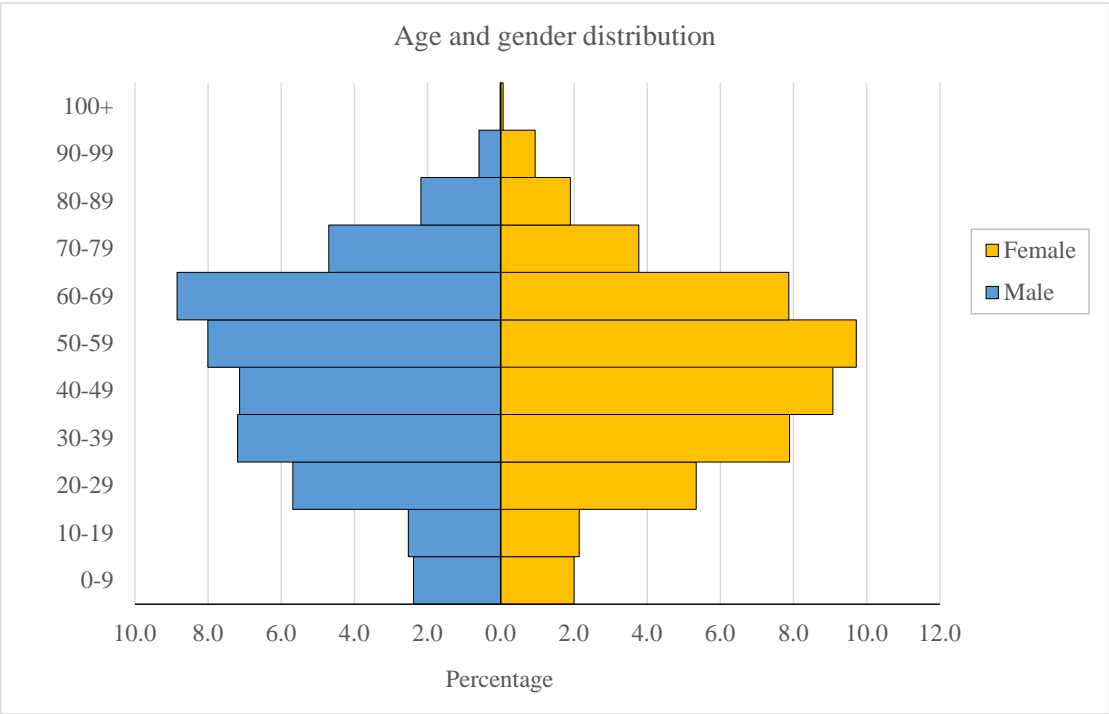
Table 1 shows the classification of cases reported since the 5th wave (since 31 December 2021).

Table 1: Number of cases tested positive for SARS-CoV-2 virus by nucleic acid tests and rapid antigen tests by classification

Reporting period	Imported case	Locally acquired case	Period total
Since the 5th wave	45799 (2.25%)	1992676 (97.75%)	2038475 (100.00%)
In the past 4 weeks			
26/10/2022 - 01/11/2022	2887 (7.82%)	34011 (92.18%)	36898 (100.00%)
02/11/2022 - 08/11/2022	3054 (8.87%)	31362 (91.13%)	34416 (100.00%)
09/11/2022 - 15/11/2022	3327 (8.19%)	37300 (91.81%)	40627 (100.00%)
16/11/2022 - 22/11/2022	3830 (7.24%)	49107 (92.76%)	52937 (100.00%)

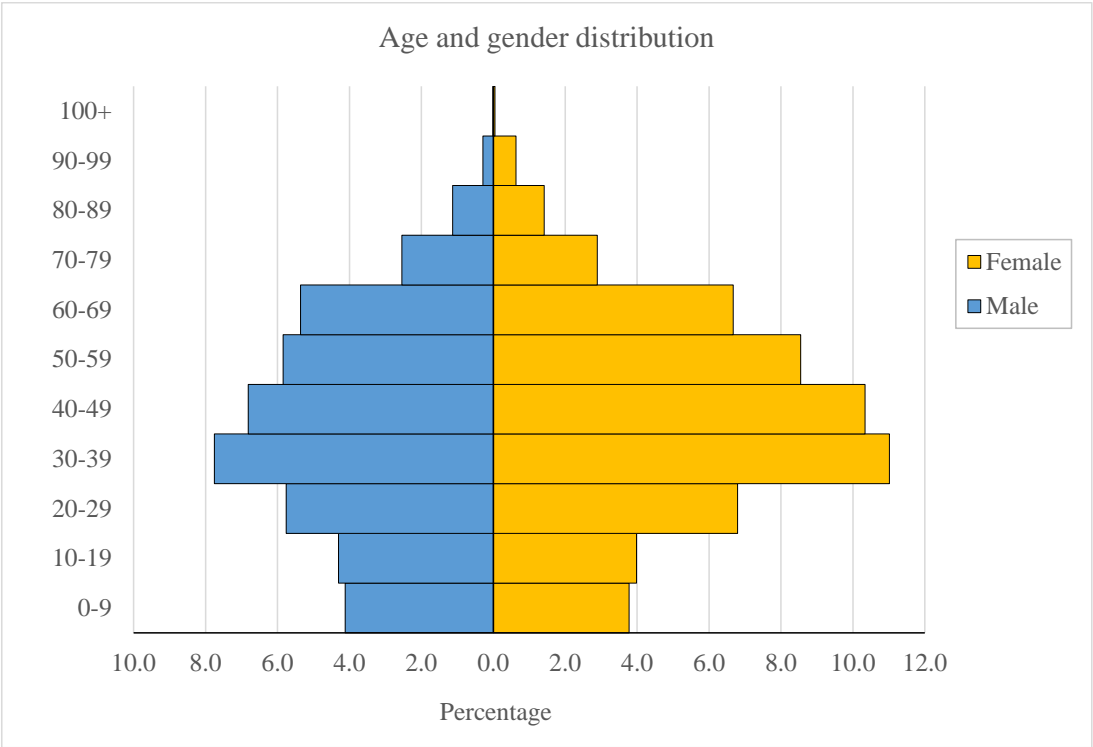
Figure 4 shows the age and gender distribution of the cases (since the 5th wave).

Figure 4(i): Age and gender distribution of cases tested positive for SARS-CoV-2 virus by nucleic acid tests in Hong Kong



Note: Re-positive cases and cases pending investigation are excluded in Figure 4(i).

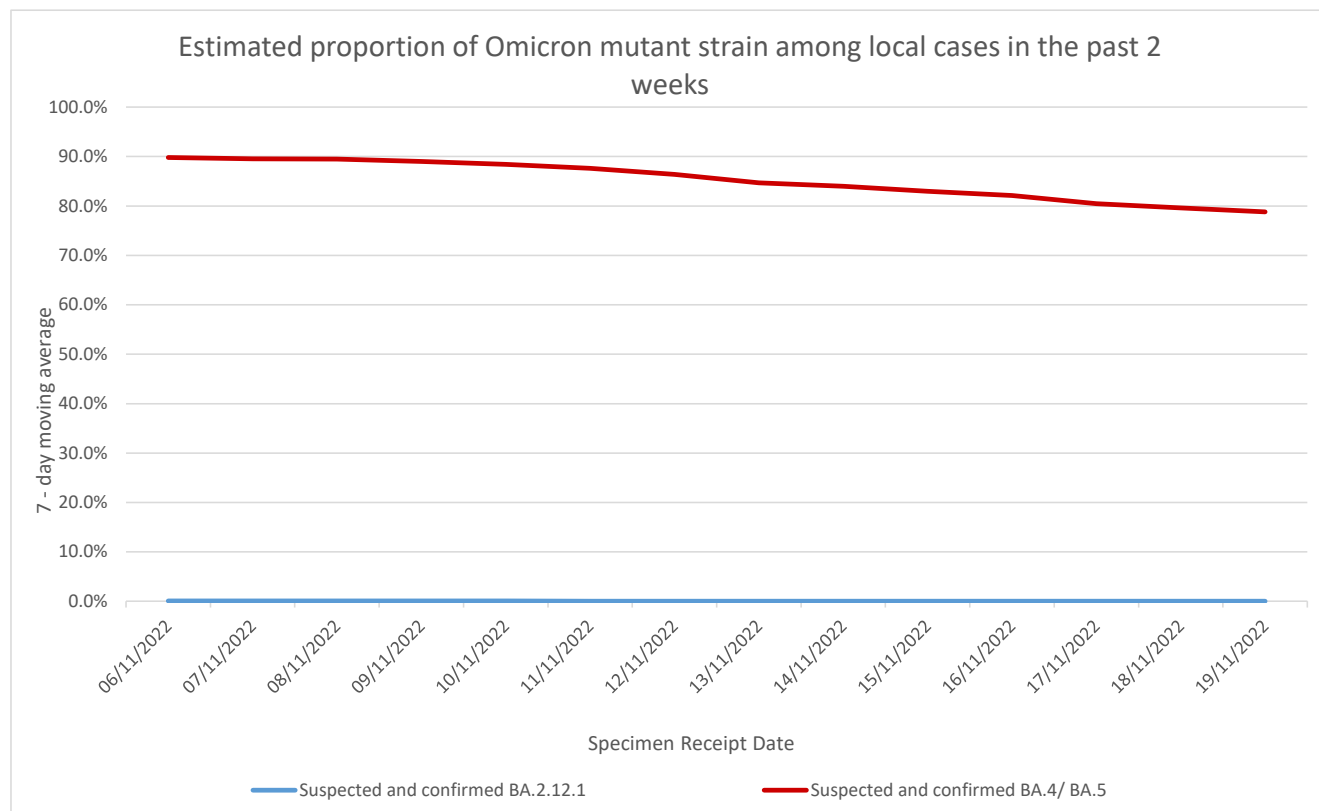
Figure 4(ii): Age and gender distribution of cases tested positive for SARS-CoV-2 virus by rapid antigen tests in Hong Kong



Source of data: Data from the Centre for Health Protection of the Department of Health with available information on age and gender.

Among the specimens received by the Public Health Laboratory Services Branch (PHLSB) during 13 to 19 November for verification testing of local cases, about 0% and 78.8% of them (7-day moving average) are related to the sub-lineages BA.2.12.1 and BA.4/BA.5* (including suspected cases) of the Omicron mutant strain respectively.

Figure 5: Estimated proportion of Omicron mutant strain among local cases in the past 2 weeks



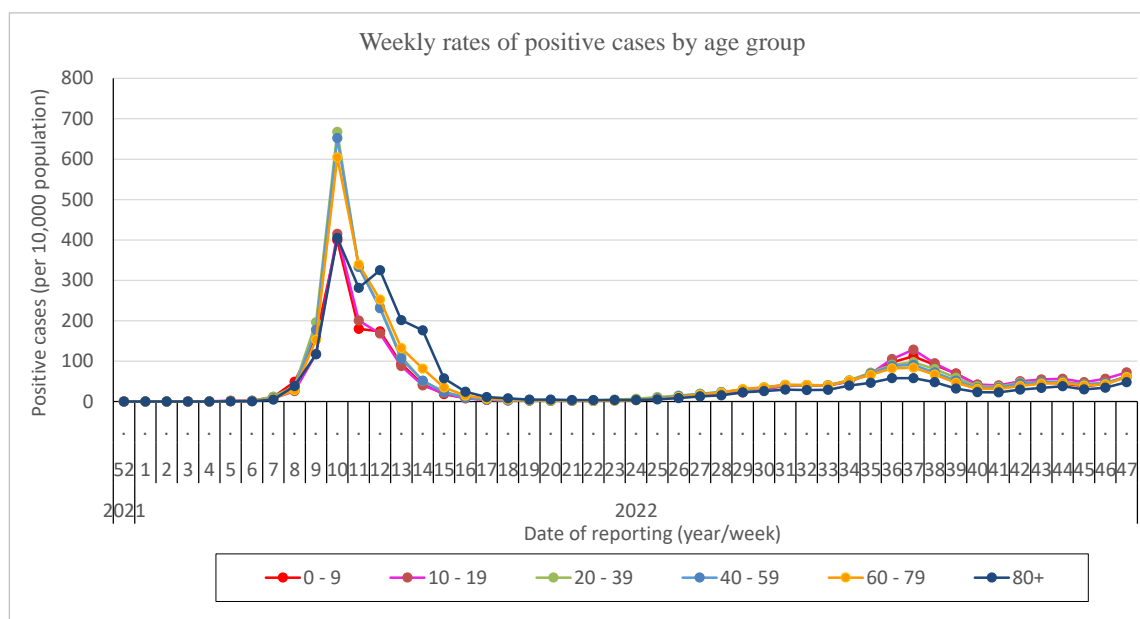
Note:

1. Related percentages are estimated from the specimens received by the PHLSB for verification testing of local cases.
2. Data may be subject to changes when there is new information available.

*Based on sampling by PHLSB for further characterisation, among specimens related to BA.4/BA.5 received from 7 – 13 November 2022, 95.2% were BA.5. (to be updated weekly)

In addition, as of 0.00am, 22 November, PHLSB had identified 224 cases of sub-lineage XBB, 6 of XBD, 8 of BA.2.75.2, 7 of BA.4.6, 12 of BF.7 and 34 of BQ.1.1 among imported cases in Hong Kong, while 62 cases of sub-lineage XBB, 16 of XBD, 1 of BA.2.75.2, 1 of BF.7 and 70 of BQ.1.1 have also been detected among local cases.

Figure 6: Weekly rates of positive cases tested by nucleic acid tests and rapid antigen tests (by age group) since the 5th wave



Note:

1. Both imported and re-positive cases are excluded in Figure 6.
2. Data in Figure 6 may be subject to changes when there is new information available.
3. Figure 6 (with data as of the preceding week) will be updated every Tuesday.

Table 2: Incidences of cases tested positive for SARS-CoV-2 virus by nucleic acid tests and rapid antigen tests by residential districts in 2022

Region	Cumulative Incidence	District	Cumulative Incidence	Aug	Sep	Oct	Nov
Hong Kong	1869.7	Central and Western	1579.2	147.9	217.3	139.2	108.1
		Wan Chai	1460.5	162.0	213.7	146.2	97.3
		Eastern	2049.5	224.4	285.2	191.4	137.9
		Southern	2029.5	200.9	265.1	187.4	127.0
Kowloon	2334.7	Kowloon City	1973.9	199.7	258.0	166.5	118.9
		Kwun Tong	2586.3	232.8	294.8	180.7	127.8
		Sham Shui Po	2279.3	178.9	238.6	140.8	104.8
		Wong Tai Sin	2543.7	221.1	284.8	162.9	123.2
		Yau Tsim Mong	2064.9	166.2	206.0	148.7	104.6
New Territories East	2213.1	Islands	1856.3	204.1	234.3	156.8	137.7
		North	2305.9	286.0	340.7	197.8	158.5
		Sai Kung	2126.6	253.6	334.7	194.6	140.7
		Sha Tin	2319.4	259.9	330.1	184.6	126.5
		Tai Po	2232.1	261.2	298.2	185.3	172.6
New Territories West	2306.9	Kwai Tsing	2456.2	181.7	241.5	149.6	117.0
		Tsuen Wan	2157.9	214.3	273.4	183.0	129.6
		Tuen Mun	2419.1	249.6	280.7	169.9	138.3
		Yuen Long	2183.6	238.3	301.0	174.6	132.0

Note:

1. Cases with multiple/ pending/ unknown residential address are excluded in Table 2.
2. Data in Table 2 are shown as number of cases per 10,000 population.
3. Table 2 (with data as of the preceding week) will be updated every Tuesday.

**Table 3 : Number of cases tested positive for SARS-CoV-2 virus reported
among schools in the past 4 weeks**

Reporting Period	No. of schools with case(s) reported	No. tested positive reported by schools	
		Student	Staff
23/10/2022 - 29/10/2022	1229	3447	676
30/10/2022 - 05/11/2022	1130	3002	622
06/11/2022 - 12/11/2022	1237	3871	569
13/11/2022 - 19/11/2022	1407	5222	1038

Note:

1. Number of schools is deduplicated based on the reporting week.
2. Table 3 (with data as of the preceding week) will be updated every Tuesday.

**Table 4 : Number of cases tested positive for SARS-CoV-2 virus reported
among residential care homes (RCHs) in the past 4 weeks**

Reporting Period	No. of RCHs with case(s) reported	No. tested positive reported by RCHs	
		Resident	Staff
23/10/2022 - 29/10/2022	47	64	5
30/10/2022 - 05/11/2022	43	64	3
06/11/2022 - 12/11/2022	80	129	10
13/11/2022 - 19/11/2022	97	144	17

Note:

1. Number of RCHs is deduplicated based on the reporting week.
2. Table 4 (with data as of the preceding week) will be updated every Tuesday.

Since 31 December 2019, the CHP of the DH has recorded a total of 10623 fatal cases.

Since the 5th wave, a total of 10410 fatal cases have been recorded.

Table 5: Case fatality rate (CFR) by age group and vaccination status (since the 5th wave)

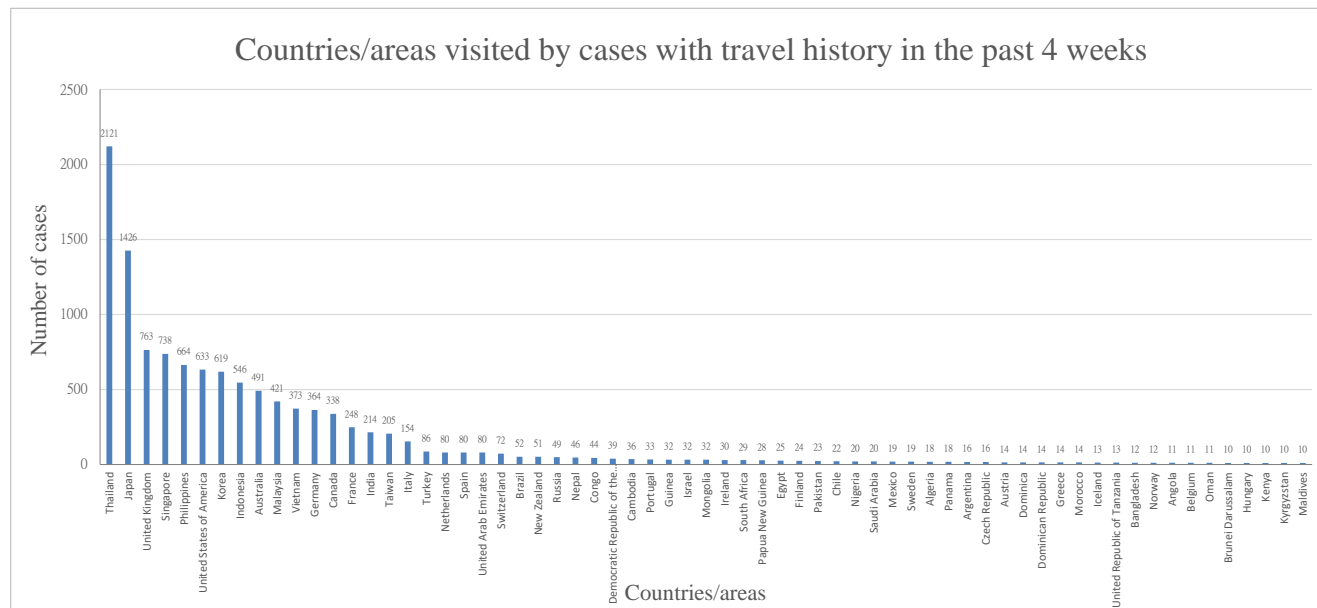
Age Group	CFR of locally acquired cases	CFR of locally acquired cases with history of at least 2 doses of COVID-19 vaccine	CFR of locally acquired cases with history of 1 dose of COVID-19 vaccine or unvaccinated
0-9	0.01%	0.00%	0.01%
10-19	0.00%	0.00%	0.01%
20-29	0.01%	0.00%	0.02%
30-39	0.01%	0.00%	0.03%
40-49	0.02%	0.01%	0.11%
50-59	0.09%	0.04%	0.48%
60-69	0.31%	0.10%	1.19%
70-79	1.23%	0.37%	3.27%
80+	7.91%	2.64%	12.43%
Overall	0.53%	0.12%	1.88%

Source of data: Data from the Centre for Health Protection of the Department of Health with available information on age and vaccination status.

Note: Table 5 (with data as of the preceding week) will be updated every Tuesday.

Figure 7 shows the countries/areas visited by the cases tested positive by nucleic acid tests reported in the past 4 weeks with travel history outside Hong Kong during the incubation period.

Figure 7: Countries/areas visited by cases tested positive by nucleic acid tests reported in the past 4 weeks with travel history



Note:

1. Some cases had visited more than one country/area.
2. Re-positive cases are excluded in Figure 7.
3. Only countries/ areas visited by 10 or more cases are included in Figure 7.