

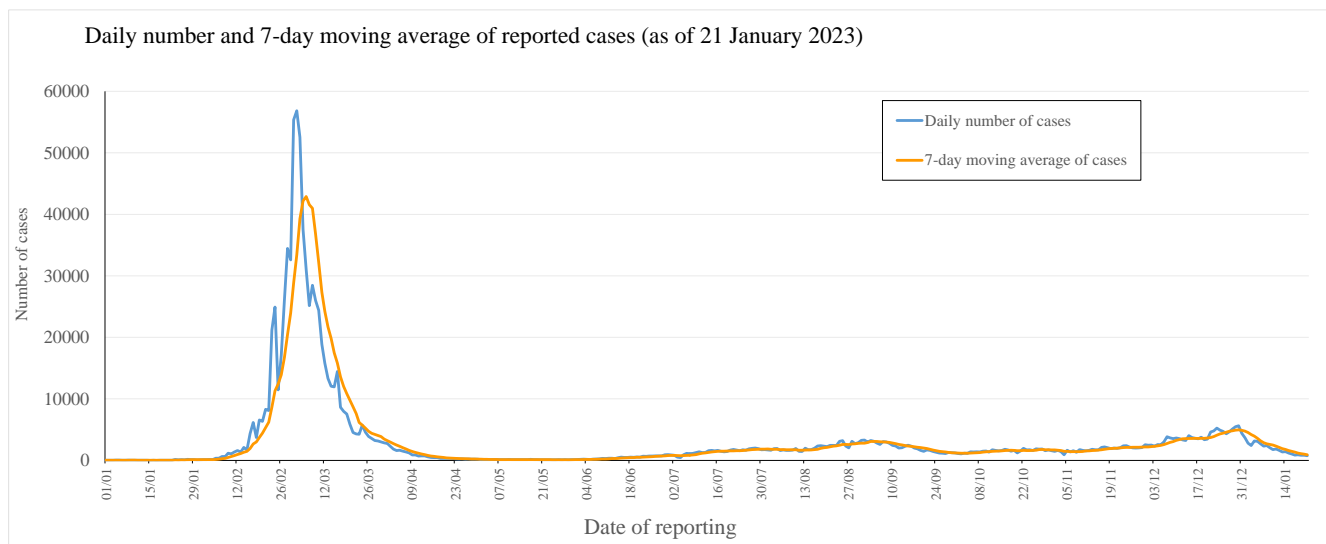
Latest situation of COVID-19 (as of 21 January 2023)

The Centre for Health Protection (CHP) of the Department of Health (DH) today (21 January) announced the latest epidemic situation of COVID-19. As of 0.00am, 21 January 2023, the CHP was investigating 3420 additional locally acquired cases tested positive for the SARS-CoV-2 virus, including 740 cases tested positive by nucleic acid tests and 2680 cases tested positive by rapid antigen tests (RATs) in the past 24 hours. Separately, 87 additional imported cases were reported, including 17 cases tested positive by nucleic acid tests and 70 cases tested positive by RATs. So far, Hong Kong has recorded a total of 1211788 and 1643529 cases tested positive by nucleic acid tests and RATs respectively for the SARS-CoV-2 virus.

Since the 5th wave (31 December 2021), 1199157 cases and 1643529 cases were tested positive by nucleic acid tests and rapid antigen tests respectively.

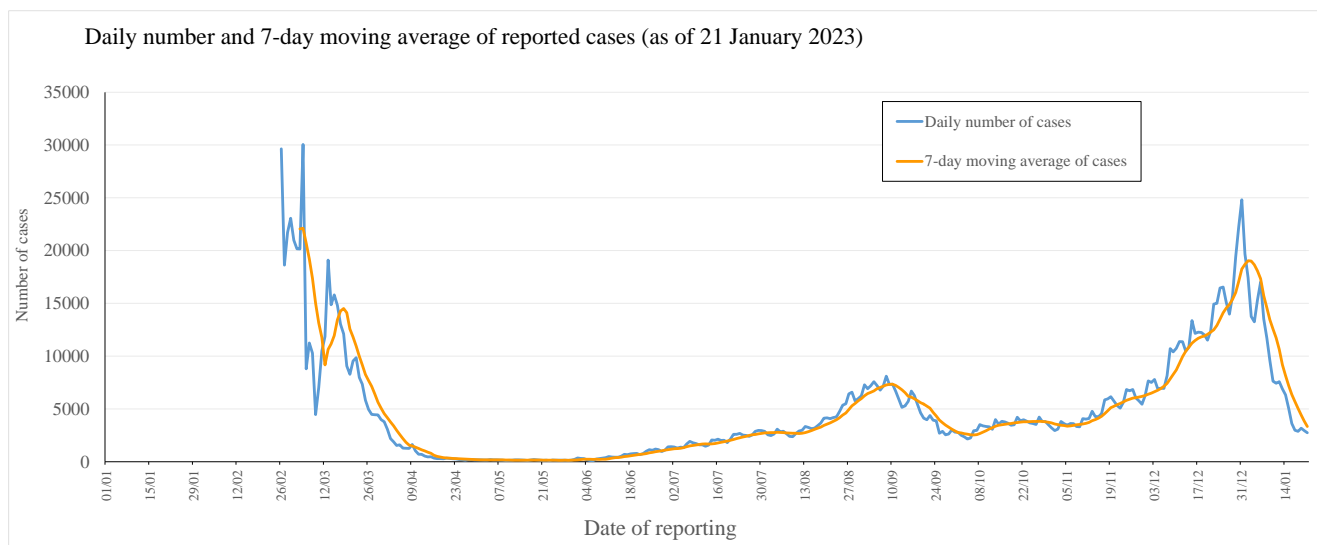
In the recent 7-day period from 15 to 21 January 2023, an average of 921.9 cases by nucleic acid tests were reported per day, as compared with 1782.4 cases per day reported in the previous 7-day period from 8 to 14 January 2023 (Figure 1(i)).

Figure 1(i): Daily number and 7-day moving average of cases tested positive for SARS-CoV-2 virus by nucleic acid tests since 2022



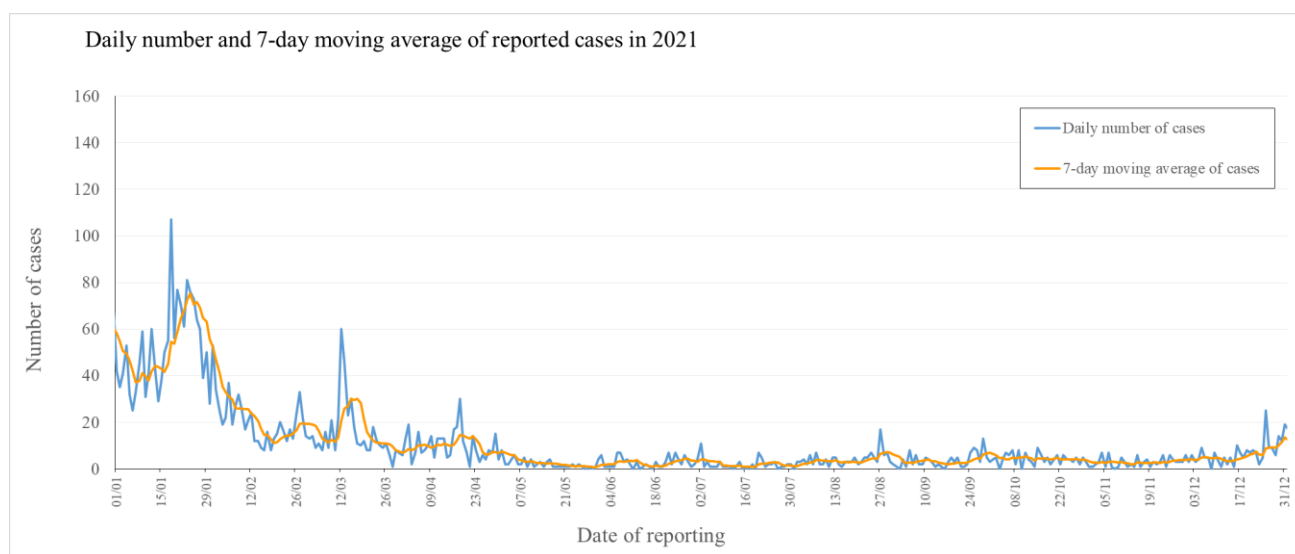
Note: Re-positive cases are excluded in Figure 1(i).

Figure 1(ii): Daily number and 7-day moving average of cases tested positive for SARS-CoV-2 virus by rapid antigen tests



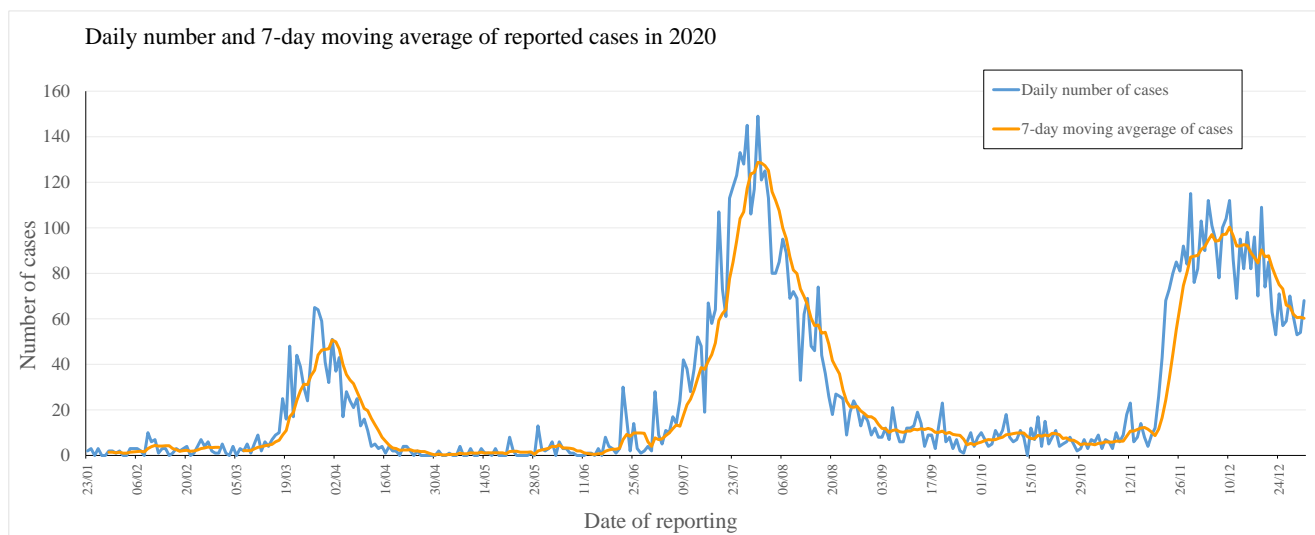
Note: Re-positive cases are excluded in Figure 1(ii).

Figure 1(iii): Daily number and 7-day moving average of cases tested positive for SARS-CoV-2 virus by nucleic acid tests in 2021



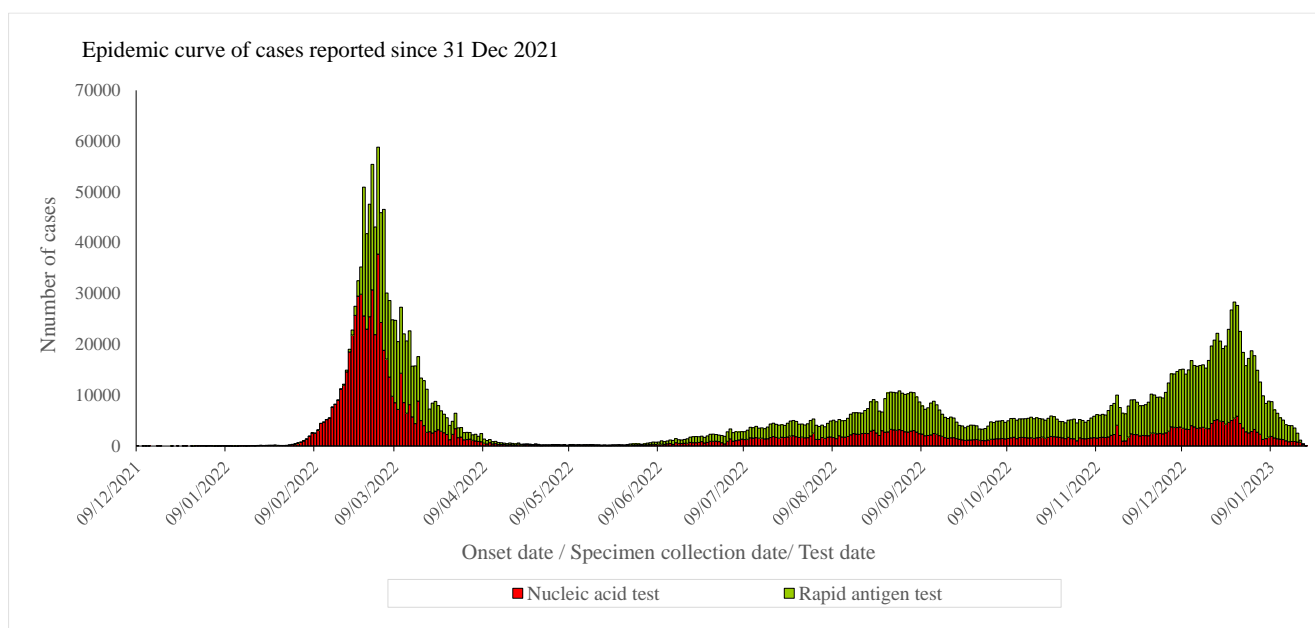
Note: Re-positive cases are excluded in Figure 1(iii).

Figure 1(iv): Daily number and 7-day moving average of cases tested positive for SARS-CoV-2 virus by nucleic acid tests in 2020



Note: Re-positive cases are excluded in Figure 1(iv).

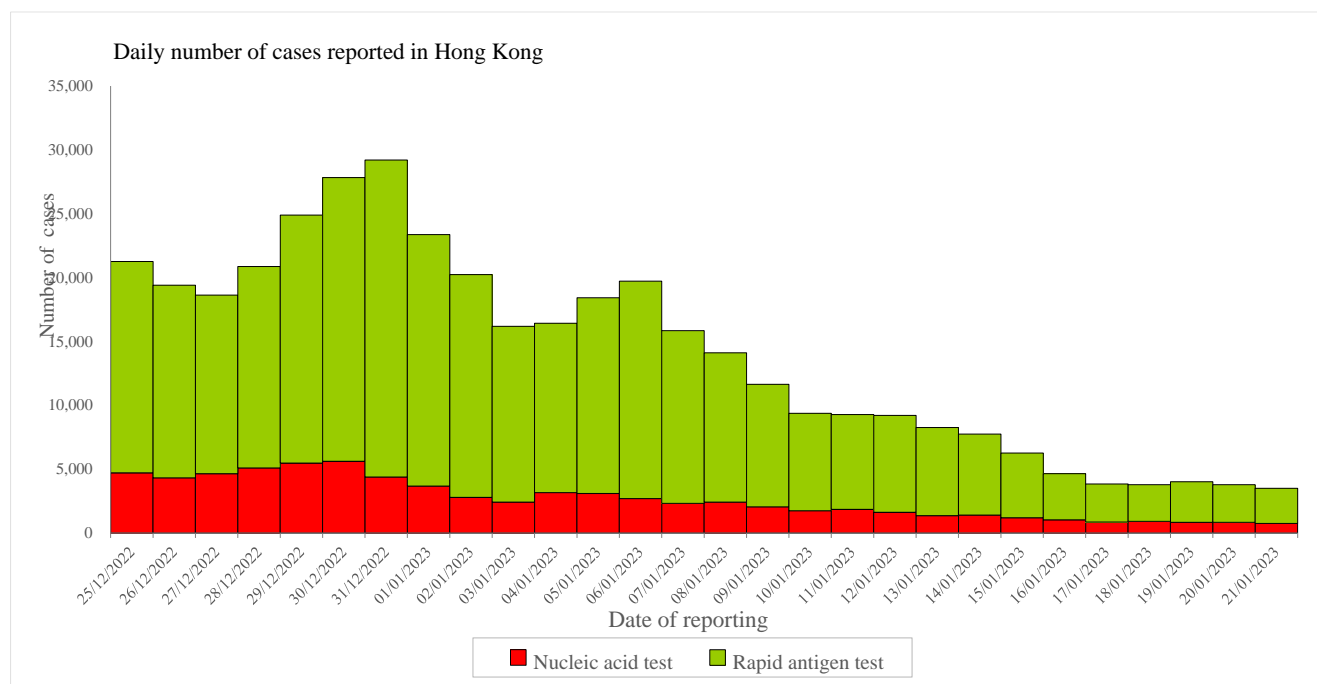
Figure 2: Epidemic curve of cases tested positive for SARS-CoV-2 virus in Hong Kong since 31 December 2021



Note:

1. Specimen collection dates are used for cases without information of onset dates.
2. Cases still under investigation are excluded in Figure 2.
3. Starting from 29 August 2022, the CHP only verifies cases reported via the "Declaration System for individuals tested positive for COVID-19 using Rapid Antigen Test" by sampling with nucleic acid test.

Figure 3: Daily number of cases tested positive for SARS-CoV-2 virus reported in the past 4 weeks



Note:

Starting from 29 August 2022, the CHP only verifies cases reported via the "Declaration System for individuals tested positive for COVID-19 using Rapid Antigen Test" by sampling with nucleic acid test.

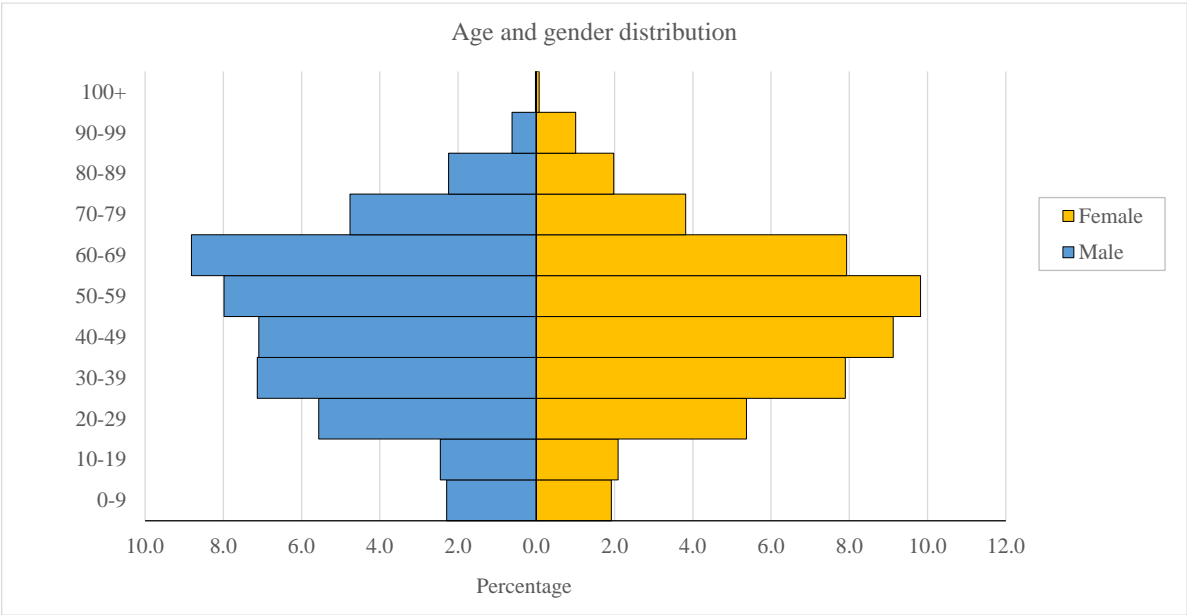
Table 1 shows the classification of cases reported since the 5th wave (since 31 December 2021).

Table 1: Number of cases tested positive for SARS-CoV-2 virus by nucleic acid tests and rapid antigen tests by classification

Reporting period	Imported case	Locally acquired case	Period total
Since the 5th wave	80812 (2.84%)	2761874 (97.16%)	2842686 (100.00%)
In the past 4 weeks			
25/12/2022 - 31/12/2022	6671 (4.12%)	155405 (95.88%)	162076 (100.00%)
1/1/2023 - 7/1/2023	2286 (1.76%)	127908 (98.24%)	130194 (100.00%)
8/1/2023 - 14/1/2023	1949 (2.80%)	67680 (97.20%)	69629 (100.00%)
15/1/2023 - 21/1/2023	804 (2.69%)	29057 (97.31%)	29861 (100.00%)

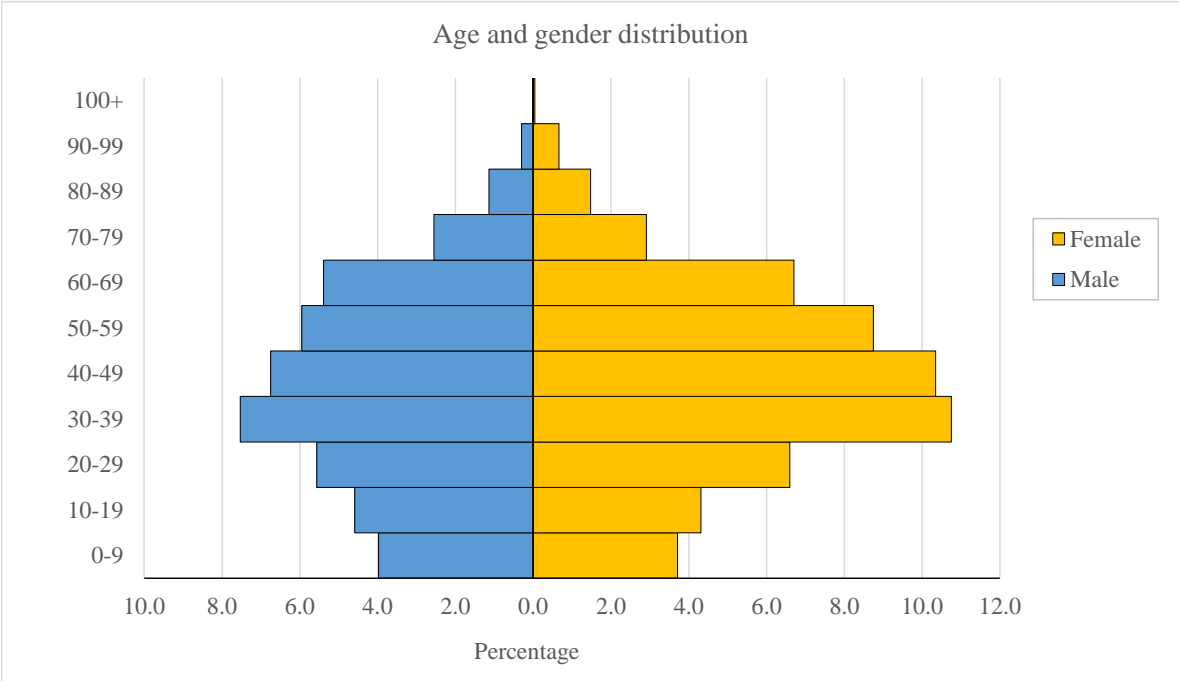
Figure 4 shows the age and gender distribution of the cases (since the 5th wave).

Figure 4(i): Age and gender distribution of cases tested positive for SARS-CoV-2 virus by nucleic acid tests in Hong Kong



Note: Re-positive cases and cases pending investigation are excluded in Figure 4(i).

Figure 4(ii): Age and gender distribution of cases tested positive for SARS-CoV-2 virus by rapid antigen tests in Hong Kong



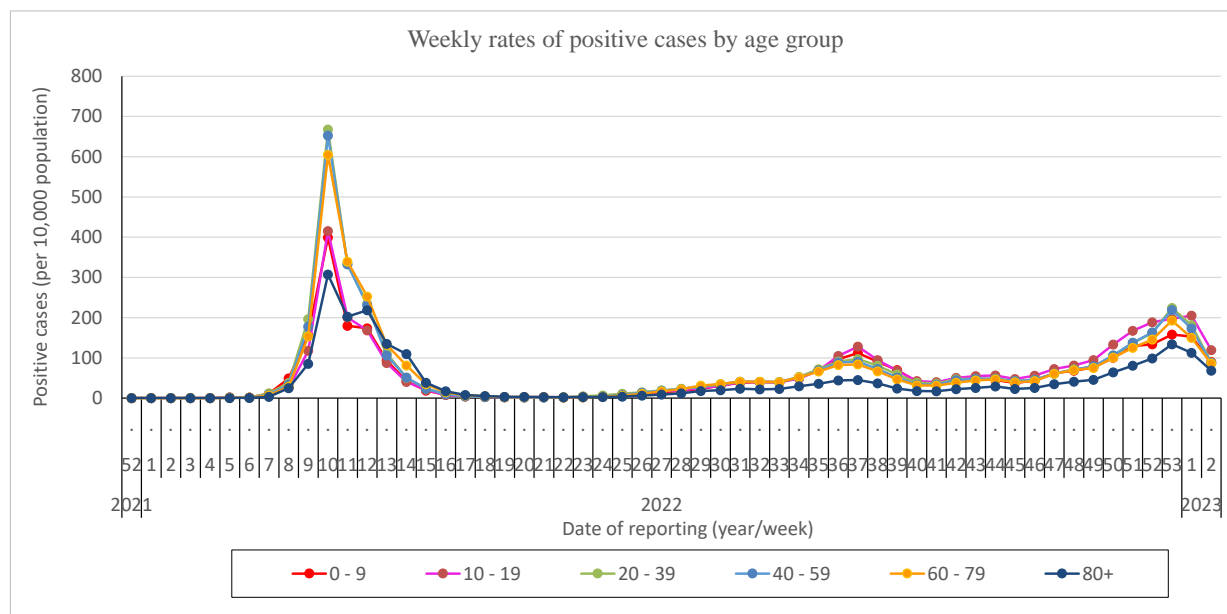
Source of data: Data from the Centre for Health Protection of the Department of Health with available information on age and gender.

Proportion of Omicron mutant strain sub-lineages BA.4/BA.5 among the specimens received by the Public Health Laboratory Services Branch (PHLSB) for verification testing of local cases: 39.11%*

*Based on sampling by PHLSB for further characterisation, among specimens related to BA.4/BA.5 received from 9 to 15 January 2023, 89.8% were BA.5. (to be updated weekly)

In addition, as of 0.00am, 21 January, PHLSB had identified 227 cases of sub-lineage XBB (including 1 case of XBB.1.5), 6 of XBD, 8 of BA.2.75.2, 7 of BA.4.6, 14 of BF.7 and 40 of BQ.1.1 among imported cases in Hong Kong, while 196 cases of sub-lineage XBB (including 8 cases of XBB.1.5), 18 of XBD, 1 of BA.2.75.2, 43 of BF.7 and 215 of BQ.1.1 have also been detected among local cases.

Figure 5: Weekly rates of positive cases tested by nucleic acid tests and rapid antigen tests (by age group) since the 5th wave



Note:

- Both imported and re-positive cases are excluded in Figure 5.
- Data in Figure 5 may be subject to changes when there is new information available.
- Figure 5 (with data as of the preceding week) will be updated every Tuesday.

Table 2: Incidences of cases tested positive for SARS-CoV-2 virus by nucleic acid tests and rapid antigen tests by residential districts since 2022

Region	Cumulative Incidence	District	Cumulative Incidence	Oct	Nov	Dec	Jan
Hong Kong	2705.3	Central and Western	2317.9	139.2	198.8	473.4	174.3
		Wan Chai	2108.9	146.2	166.2	405.1	174.1
		Eastern	2976.6	191.4	240.8	586.4	237.6
		Southern	2886.5	187.5	239.5	527.3	216.5
Kowloon	3207.9	Kowloon City	2861.1	166.5	217.5	571.5	216.5
		Kwun Tong	3520.7	180.7	221.4	617.4	223.0
		Sham Shui Po	3099.6	140.8	192.5	529.8	202.0
		Wong Tai Sin	3447.2	162.9	227.0	582.9	215.9
		Yau Tsim Mong	2819.3	148.8	187.1	496.8	174.5
New Territories East	3248.0	Islands	2669.8	156.8	234.1	522.2	194.6
		North	3484.4	197.8	291.6	751.9	293.1
		Sai Kung	3176.1	194.6	255.6	666.5	267.6
		Sha Tin	3367.0	184.6	241.9	671.8	259.9
		Tai Po	3205.4	185.3	291.1	613.5	240.9
New Territories West	3320.9	Kwai Tsing	3330.2	149.6	209.0	555.1	226.3
		Tsuen Wan	3135.4	183.0	244.6	611.4	250.9
		Tuen Mun	3510.9	170.0	266.9	685.4	277.2
		Yuen Long	3259.5	174.6	241.8	688.3	277.4

Note:

- Cases with multiple/ pending/ unknown residential address are excluded in Table 2.
- Data in Table 2 are shown as number of cases per 10,000 population.
- Table 2 (with data as of the preceding week) will be updated every Tuesday.

**Table 3 : Number of cases tested positive for SARS-CoV-2 virus reported
among schools in the past 4 weeks**

Reporting Period	No. of schools with case(s) reported	No. tested positive reported by schools	
		Student	Staff
18/12/2022-24/12/2022	1289	7867	1552
25/12/2022-31/12/2022	154	259	210
01/01/2023-07/01/2023	1326	4530	1204
08/01/2023-14/01/2023	1382	5910	950

Note:

1. Number of schools is deduplicated based on the reporting week.
2. Table 3 (with data as of the preceding week) will be updated every Tuesday.

**Table 4 : Number of cases tested positive for SARS-CoV-2 virus reported
among residential care homes (RCHs) in the past 4 weeks**

Reporting Period	No. of RCHs with case(s) reported	No. tested positive reported by RCHs	
		Resident	Staff
18/12/2022-24/12/2022	494	3447	1451
25/12/2022-31/12/2022	623	4456	1870
01/01/2023-07/01/2023	547	3234	1227
08/01/2023-14/01/2023	270	1485	408

Note:

1. Number of RCHs is deduplicated based on the reporting week.
2. Table 4 (with data as of the preceding week) will be updated every Tuesday.

Since 31 December 2019, the CHP of the DH has recorded a total of 13081 fatal cases.

Since the 5th wave, a total of 12868 fatal cases have been recorded.

Table 5: Case fatality rate (CFR) by age group and vaccination status (since the 5th wave)

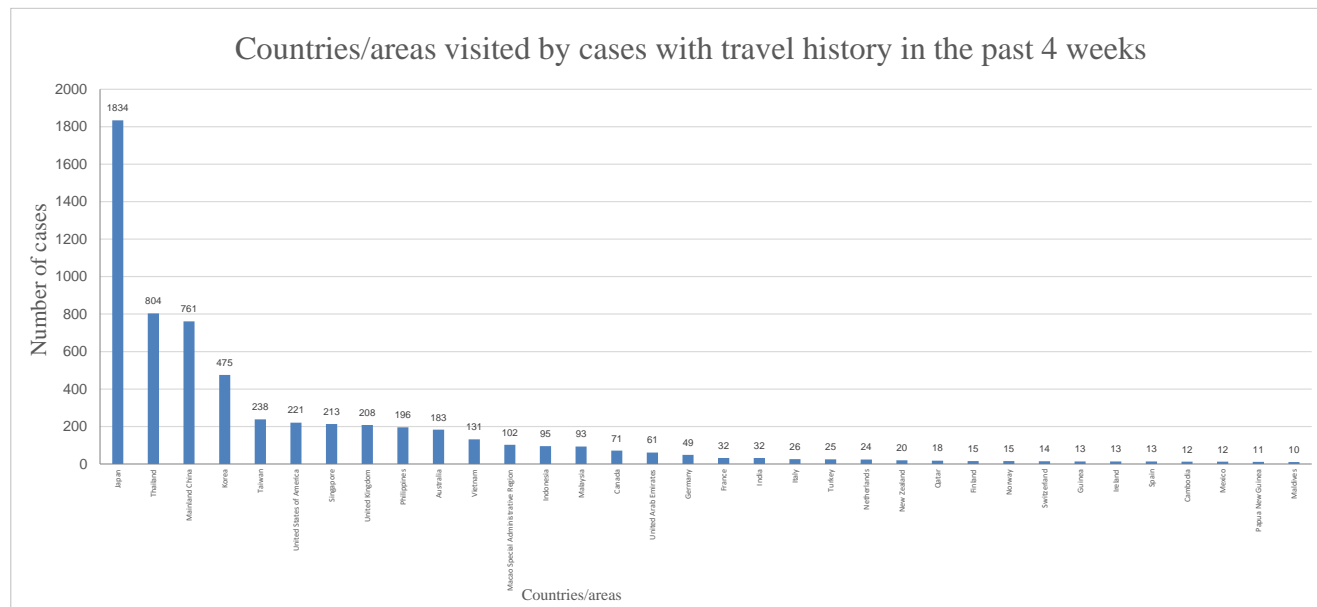
Age Group	CFR of locally acquired cases	CFR of locally acquired cases with history of at least 2 doses of COVID-19 vaccine	CFR of locally acquired cases with history of 1 dose of COVID-19 vaccine or unvaccinated
0-9	0.01%	0.00%	0.01%
10-19	0.00%	0.00%	0.01%
20-29	0.01%	0.00%	0.02%
30-39	0.01%	0.00%	0.03%
40-49	0.02%	0.01%	0.11%
50-59	0.08%	0.04%	0.44%
60-69	0.28%	0.12%	1.16%
70-79	1.10%	0.45%	3.18%
80+	6.89%	3.00%	12.27%
Overall	0.46%	0.16%	1.72%

Source of data: Data from the Centre for Health Protection of the Department of Health with available information on age and vaccination status.

Note: Table 5 (with data as of the preceding week) will be updated every Tuesday.

Figure 6 shows the countries/areas visited by the cases tested positive by nucleic acid tests reported in the past 4 weeks with travel history outside Hong Kong during the incubation period.

Figure 6: Countries/areas visited by cases tested positive by nucleic acid tests reported in the past 4 weeks with travel history



Note:

1. Some cases had visited more than one country/area.
2. Re-positive cases are excluded in Figure 6.
3. Only countries/ areas visited by 10 or more cases are included in Figure 6.