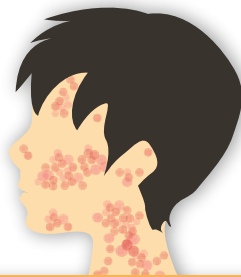


Know More about Measles



- Measles is a **highly infectious** disease caused by a virus. The patient can pass the disease to other persons from 4 days before to 4 days after appearance of the rash
- Affected persons present initially with fever, cough, runny nose, red eyes and white spots inside the mouth
- This is followed 3 to 7 days later by **a red blotchy skin rash**, which usually **spreads from face to the rest of the body**. The rash usually lasts 4 to 7 days, but can persist for up to 3 weeks
- In severe cases, **lung, gut and brain can get involved** and lead to serious consequences or **even death**

