



The Hong Kong STD/AIDS update is a composite report on HIV/AIDS reporting and STI caseload statistics published three monthly. The current issue has the updated information up to December 2023.

SPP Surveillance Team:

Dr. Annie LO

Ms. Shirry WAN

Correspondence to:

Special Preventive Programme,

Centre for Health Protection, Department of Health

c/o Red Ribbon Centre, 2/F Wang Tau Hom Jockey Club Clinic,

200 Junction Road East, Kowloon, Hong Kong

Telephone: (852) 3143 7200 Facsimile: (852) 2338 0534

E-mail: aids@dh.gov.hk

List of Tables / Figures

1. NUMBER OF HIV/AIDS REPORTED	139
TABLE 1.1 SUMMARY TABLE ON THE REPORTED NUMBER OF HIV/AIDS	139
CHART 1.1 NUMBER OF HIV/AIDS REPORTED	142
2. GENDER DISTRIBUTION OF REPORTED HIV/AIDS	143
TABLE 2.1 GENDER DISTRIBUTION OF REPORTED HIV	143
CHART 2.1 GENDER DISTRIBUTION OF REPORTED HIV BY QUARTER	144
CHART 2.2 GENDER DISTRIBUTION OF REPORTED HIV BY YEAR	145
TABLE 2.2 GENDER DISTRIBUTION OF REPORTED AIDS	146
CHART 2.3 GENDER DISTRIBUTION OF REPORTED AIDS BY QUARTER	147
CHART 2.4 GENDER DISTRIBUTION OF REPORTED AIDS BY YEAR	148
3. ETHNICITY OF REPORTED HIV/AIDS	149
TABLE 3.1 DISTRIBUTION OF ETHNICITY OF REPORTED HIV	149
CHART 3.1 DISTRIBUTION OF ETHNICITY OF REPORTED HIV	150
TABLE 3.2 DISTRIBUTION OF ETHNICITY OF REPORTED AIDS	151
CHART 3.2 DISTRIBUTION OF ETHNICITY OF REPORTED AIDS	152
4. AGE DISTRIBUTION OF REPORTED HIV/AIDS	153
TABLE 4.1 AGE DISTRIBUTION OF REPORTED HIV	153
CHART 4.1 AGE DISTRIBUTION OF REPORTED HIV	154
CHART 4.2 AGE GROUP & GENDER OF TOTAL REPORTED HIV	155
TABLE 4.2 AGE DISTRIBUTION OF REPORTED AIDS	156
CHART 4.3 AGE DISTRIBUTION OF REPORTED AIDS	157
CHART 4.4 AGE GROUP & GENDER OF TOTAL REPORTED AIDS	158
5. EXPOSURE CATEGORIES OF REPORTED HIV/AIDS	159
TABLE 5.1 EXPOSURE CATEGORIES OF REPORTED HIV	159
CHART 5.1 EXPOSURE CATEGORIES OF REPORTED HIV	160
TABLE 5.2 EXPOSURE CATEGORIES OF REPORTED AIDS	161
CHART 5.2 EXPOSURE CATEGORIES OF REPORTED AIDS	162

6. RATIO (HETEROSEXUAL : HOMOSEXUAL / BISEXUAL) OF SEXUALLY ACQUIRED HIV INFECTION IN MEN	163
TABLE 6.1 RATIO OF SEXUALLY ACQUIRED INFECTION IN MEN WITH REPORTED HIV/AIDS (HETEROSEXUAL : HOMO / BISEXUAL) BY QUARTER	163
TABLE 6.2 RATIO OF SEXUALLY ACQUIRED INFECTION IN MEN WITH REPORTED HIV/AIDS (HETEROSEXUAL : HOMO / BISEXUAL) BY YEAR	164
7. INJECTING DRUG USERS IN REPORTED HIV/AIDS	165
TABLE 7.1 INJECTING DRUG USERS IN REPORTED HIV/AIDS	165
TABLE 7.2 NUMBER OF INJECTING DRUG USER IN REPORTED HIV/AIDS BY YEAR	166
8. SOURCE OF REFERRAL OF REPORTED HIV/AIDS	167
TABLE 8.1 SOURCE OF REFERRAL OF REPORTED HIV	167
CHART 8.1 SOURCE OF REFERRAL OF REPORTED HIV	168
TABLE 8.2 SOURCE OF REFERRAL OF REPORTED AIDS	169
CHART 8.2 SOURCE OF REFERRAL OF REPORTED AIDS	170
9. DISTRIBUTION OF AIDS DEFINING ILLNESSES	171
TABLE 9.1 DISTRIBUTION OF AIDS DEFINING ILLNESS OF REPORTED AIDS	171
CHART 9.1 AIDS DEFINING ILLNESS OF TOTAL REPORTED AIDS	172
CHART 9.2 AIDS DEFINING ILLNESS OF REPORTED AIDS BY YEAR	173
10. REPORTED SEXUALLY TRANSMITTED INFECTIONS (STIS) DIAGNOSED IN SOCIAL HYGIENE SERVICE	174
TABLE 10.1 SUMMARY TABLE ON THE REPORTED STIS DIAGNOSED IN SOCIAL HYGIENE SERVICE	174
11. GENDER DISTRIBUTION OF REPORTED STIS	176
TABLE 11.1 GENDER DISTRIBUTION OF SELECTED STI REPORTED BY SOCIAL HYGIENE SERVICE	176
TABLE 11.2 GENDER DISTRIBUTION OF REPORTED STI BY CLINIC	178
12. CLINIC DISTRIBUTION	179
CHART 12.1 NUMBER OF NEWLY REPORT STI IN Q4 2023 BY CLINIC (MALE CLIENTS)	179
CHART 12.2 NUMBER OF NEWLY REPORT STI IN Q4 2023 BY CLINIC (FEMALE CLIENTS)	180

1. Number of HIV/AIDS reported

Table 1.1 Summary table on the reported number of HIV/AIDS

	This quarter (Oct - Dec 2023)		Last quarter (Jul - Sep 2023)		Same quarter last year (Oct - Dec 2022)		Cumulative (1984 – 2023)	
	HIV	AIDS	HIV	AIDS	HIV	AIDS	HIV	AIDS
Sex								
Male	75	11	92	23	85	7	9,867	2,056
Female	20	3	21	5	17	2	2,171	427
Ethnicity / race								
Chinese	64	8	76	22	71	7	8,390	1,915
Non-Chinese	14	6	24	6	19	2	3,216	568
<i>Asian</i>	<i>10</i>	<i>3</i>	<i>13</i>	<i>5</i>	<i>13</i>	<i>2</i>	<i>1,676</i>	<i>403</i>
<i>White</i>	<i>3</i>	<i>3</i>	<i>5</i>	<i>1</i>	<i>1</i>	<i>0</i>	<i>669</i>	<i>110</i>
<i>Black</i>	<i>0</i>	<i>0</i>	<i>5</i>	<i>0</i>	<i>5</i>	<i>0</i>	<i>283</i>	<i>46</i>
<i>Others</i>	<i>1</i>	<i>0</i>	<i>1</i>	<i>0</i>	<i>0</i>	<i>0</i>	<i>588</i>	<i>9</i>
Unknown	17	0	13	0	12	0	432	0

(to be cont'd)

Table 1.1 (cont'd)

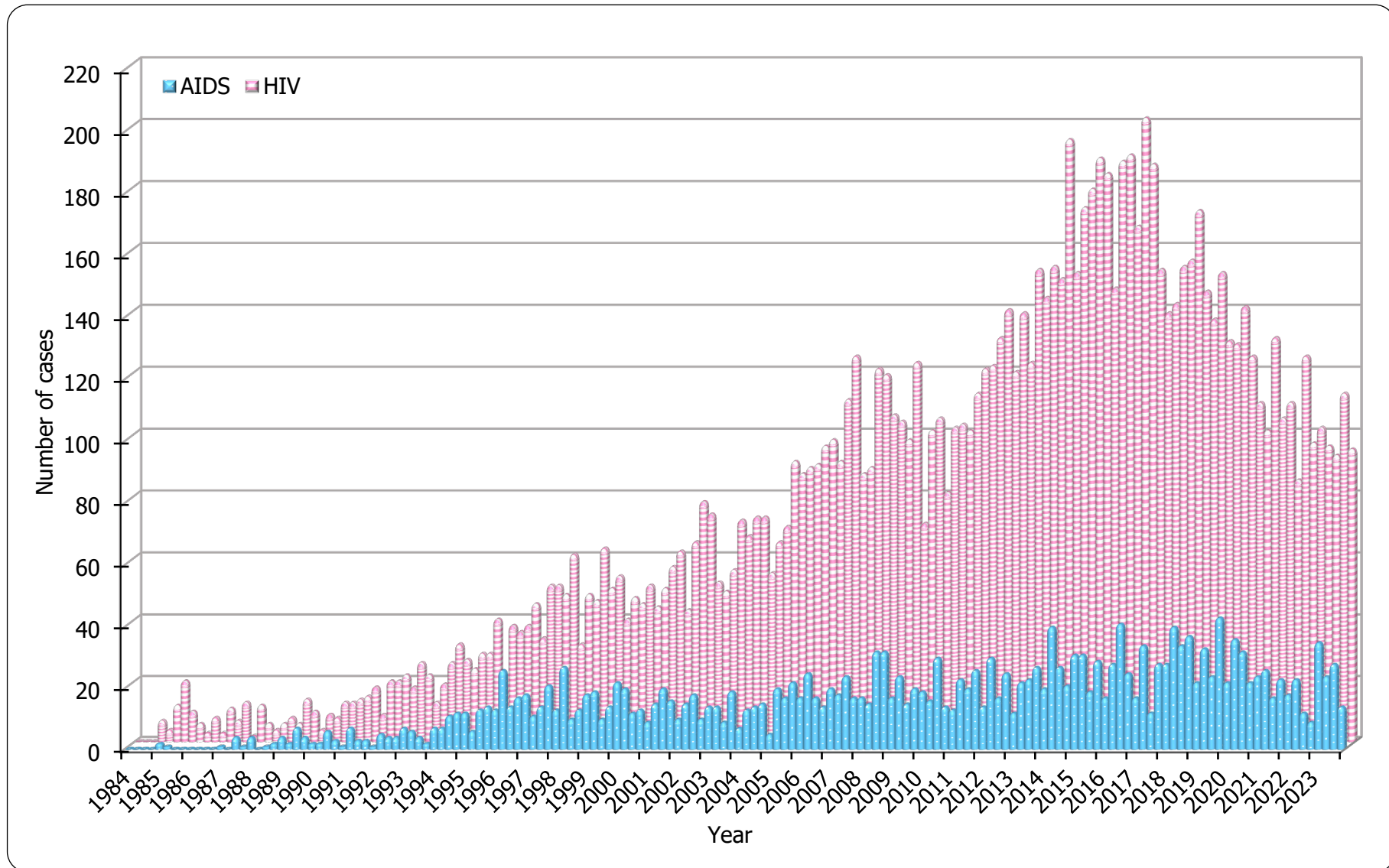
	This quarter (Oct - Dec 2023)		Last quarter (Jul - Sep 2023)		Same quarter last year (Oct - Dec 2022)		Cumulative (1984 – 2023)	
	HIV	AIDS	HIV	AIDS	HIV	AIDS	HIV	AIDS
Age at diagnosis								
Adult	95	14	112	28	102	9	11,982	2,469
Child (age 13 or less)	0	0	1	0	0	0	56	14
Exposure category								
Heterosexual	19	6	36	13	33	4	3,858	1,246
Homosexual	46	7	46	9	44	4	5,040	794
Bisexual	4	1	11	4	9	0	718	174
Injecting drug use	2	0	1	0	0	0	383	70
Blood / blood product infusion	0	0	0	0	0	0	87	26
Mother-to-child transmission	0	0	1	0	0	0	36	11
Undetermined	24	0	18	2	16	1	1,916	162

(to be cont'd)

Table 1.1 (cont'd)

	This quarter (Oct - Dec 2023)		Last quarter (Jul - Sep 2023)		Same quarter last year (Oct - Dec 2022)		Cumulative (1984 – 2023)	
	HIV	AIDS	HIV	AIDS	HIV	AIDS	HIV	AIDS
Source of referral								
Public hospitals / clinics / laboratories	42	9	61	24	50	9	5,020	1,926
Private hospitals / clinics / laboratories	14	2	21	2	7	0	2,265	308
Social Hygiene Clinics	11	2	13	1	15	0	1,743	87
DH AIDS Unit	8	1	9	1	13	0	1,509	123
AIDS service organisations (NGOs)	18	0	7	0	16	0	1,178	21
Hong Kong Red Cross Blood Transfusion Service	2	0	2	0	1	0	186	11
Drug rehabilitation services	0	0	0	0	0	0	137	7
Total	95	14	113	28	102	9	12,038	2,483

Chart 1.1 Number of HIV/AIDS reported



2. Gender distribution of reported HIV/AIDS

Table 2.1 Gender distribution of reported HIV

	This quarter (Oct - Dec 2023)	Last quarter (Jul - Sep 2023)	Same quarter last year (Oct - Dec 2022)	Cumulative (1984 – 2023)
Male	75	92	85	9,867
Female	20	21	17	2,171
Total	95	113	102	12,038

Chart 2.1 Gender distribution of reported HIV by quarter

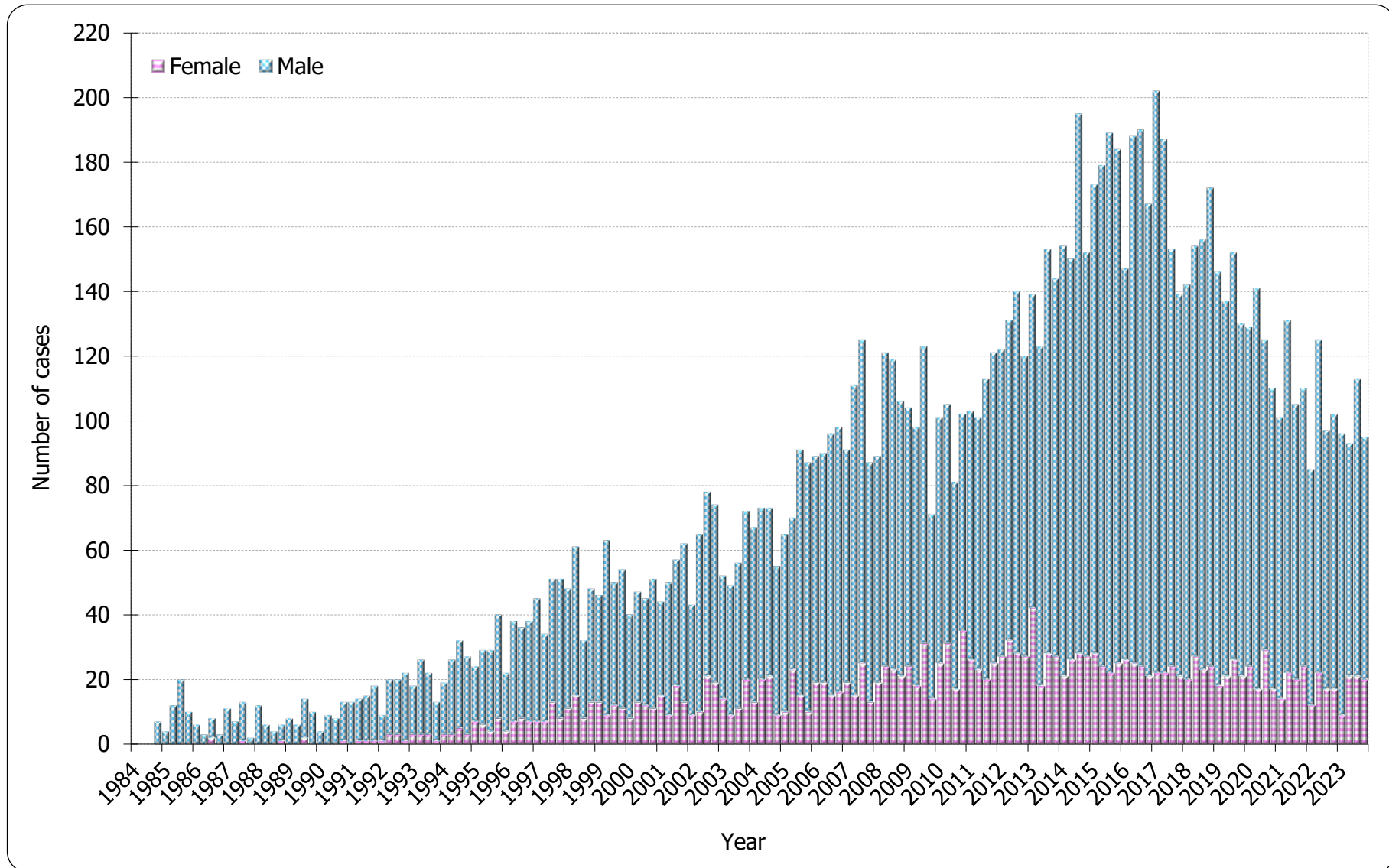


Chart 2.2 Gender distribution of reported HIV by year

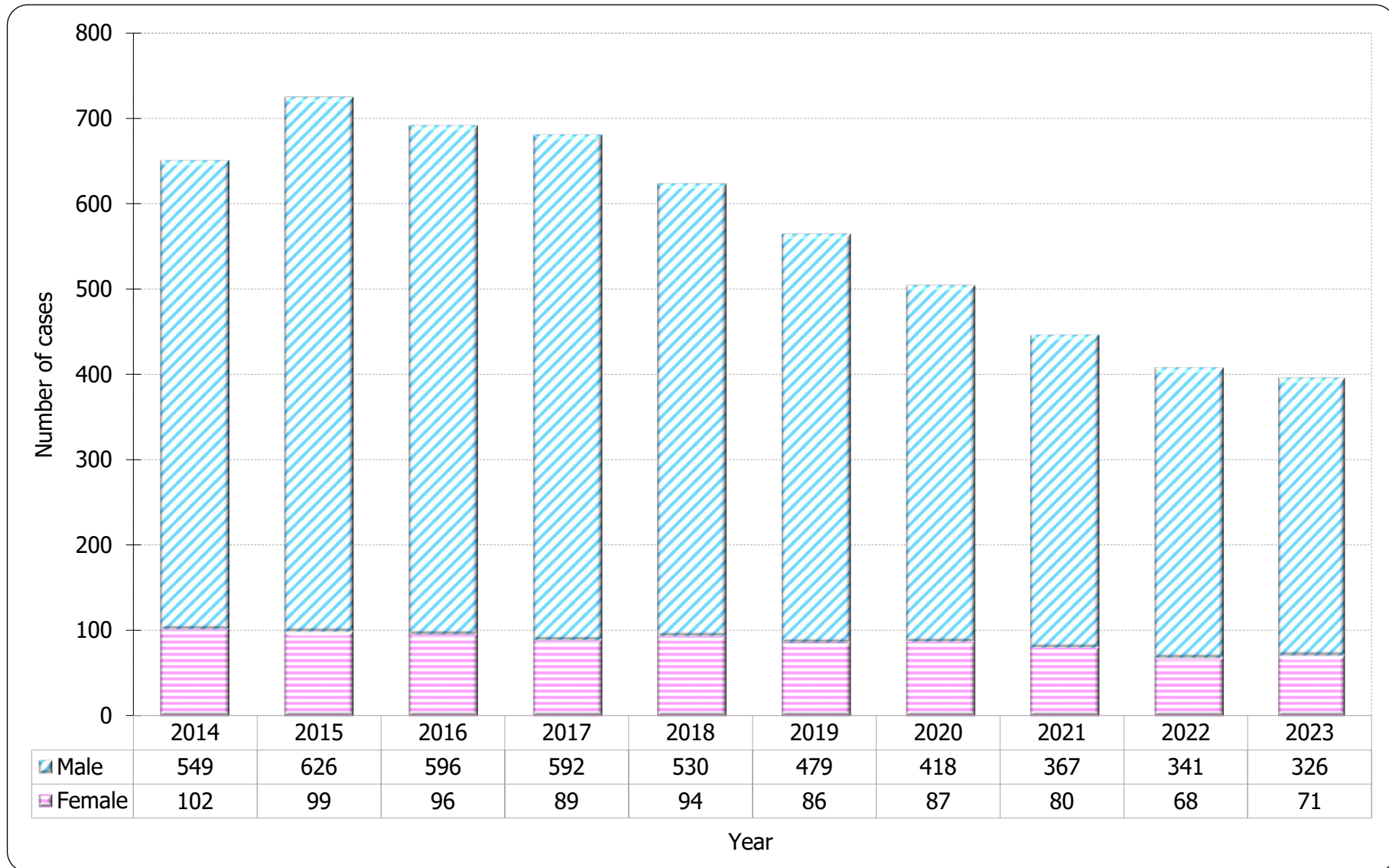


Table 2.2 Gender distribution of reported AIDS

	This quarter (Oct - Dec 2023)	Last quarter (Jul - Sep 2023)	Same quarter last year (Oct - Dec 2022)	Cumulative (1984 – 2023)
Male	11	23	7	2,056
Female	3	5	2	427
Total	14	28	9	2,483

Chart 2.3 Gender distribution of reported AIDS by quarter

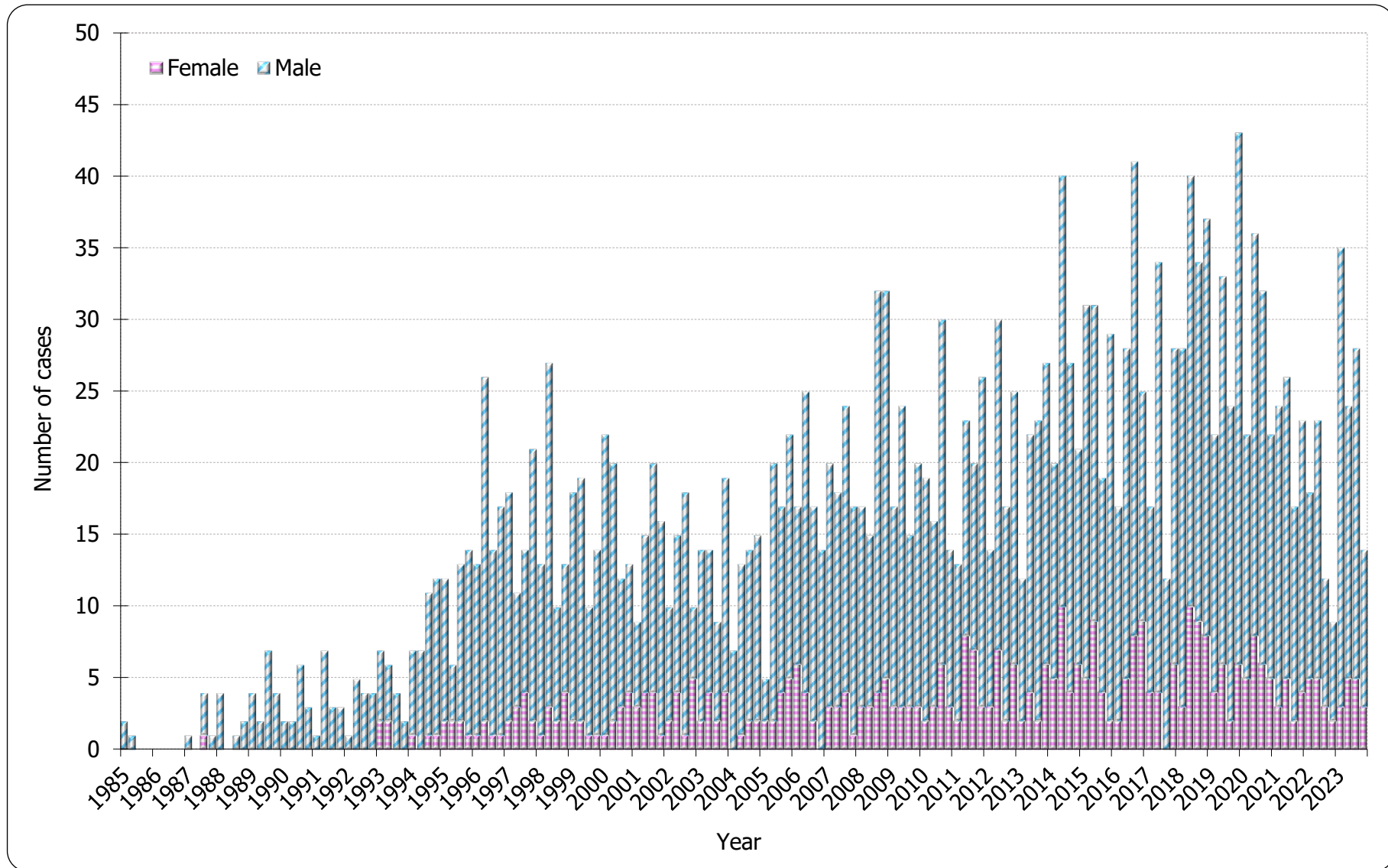
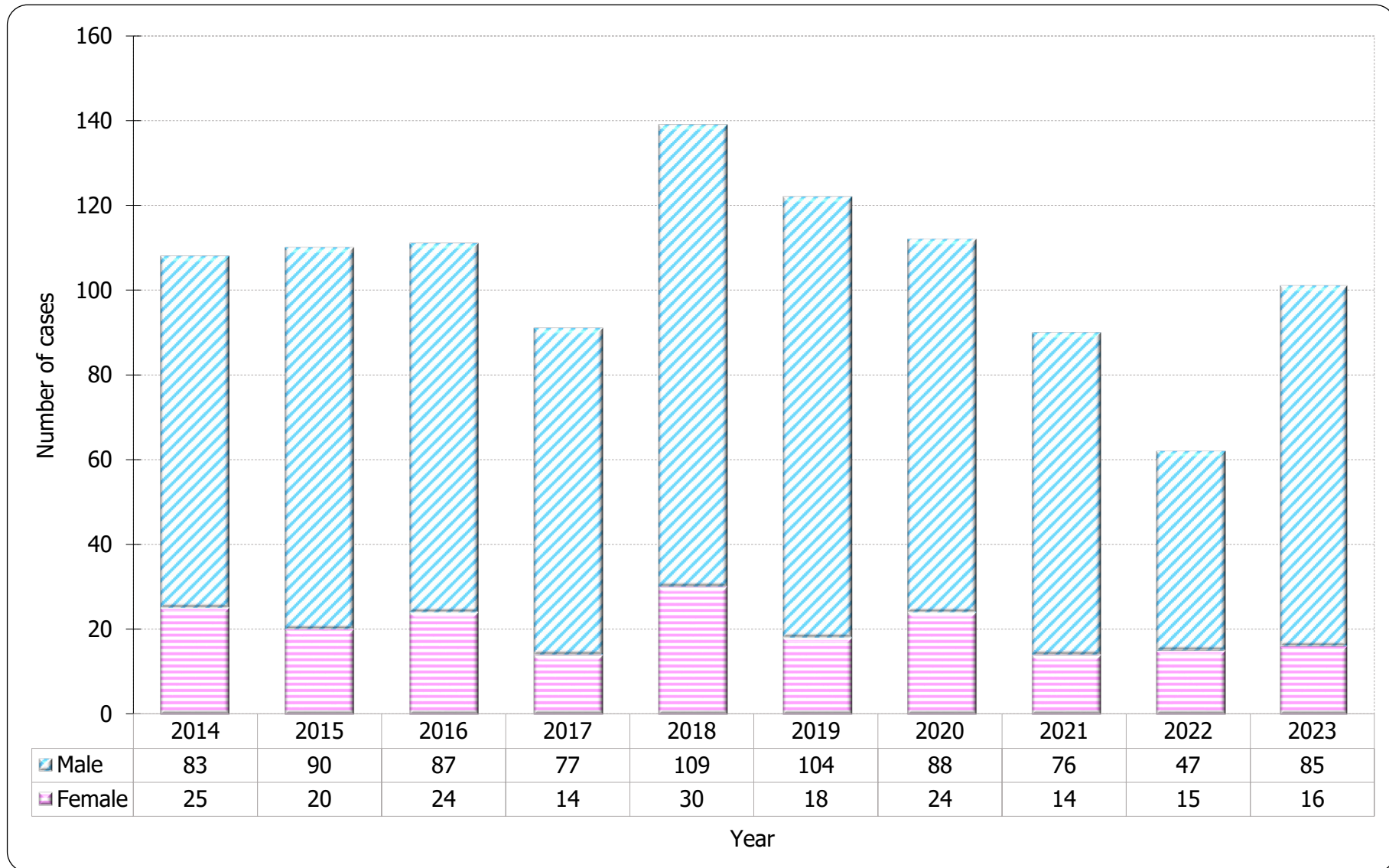


Chart 2.4 Gender distribution of reported AIDS by year



3. Ethnicity of reported HIV/AIDS

Table 3.1 Distribution of ethnicity of reported HIV

	This quarter (Oct - Dec 2023)	Last quarter (Jul - Sep 2023)	Same quarter last year (Oct - Dec 2022)	Cumulative (1984 – 2023)
Chinese	64	76	71	8,390
Non-Chinese	14	24	19	3,216
<i>Asian</i>	<i>10</i>	<i>13</i>	<i>13</i>	<i>1,676</i>
<i>White</i>	<i>3</i>	<i>5</i>	<i>1</i>	<i>669</i>
<i>Black</i>	<i>0</i>	<i>5</i>	<i>5</i>	<i>283</i>
<i>Others</i>	<i>1</i>	<i>1</i>	<i>0</i>	<i>588</i>
Unknown	17	13	12	432
Total	95	113	102	12,038

Chart 3.1 Distribution of ethnicity of reported HIV

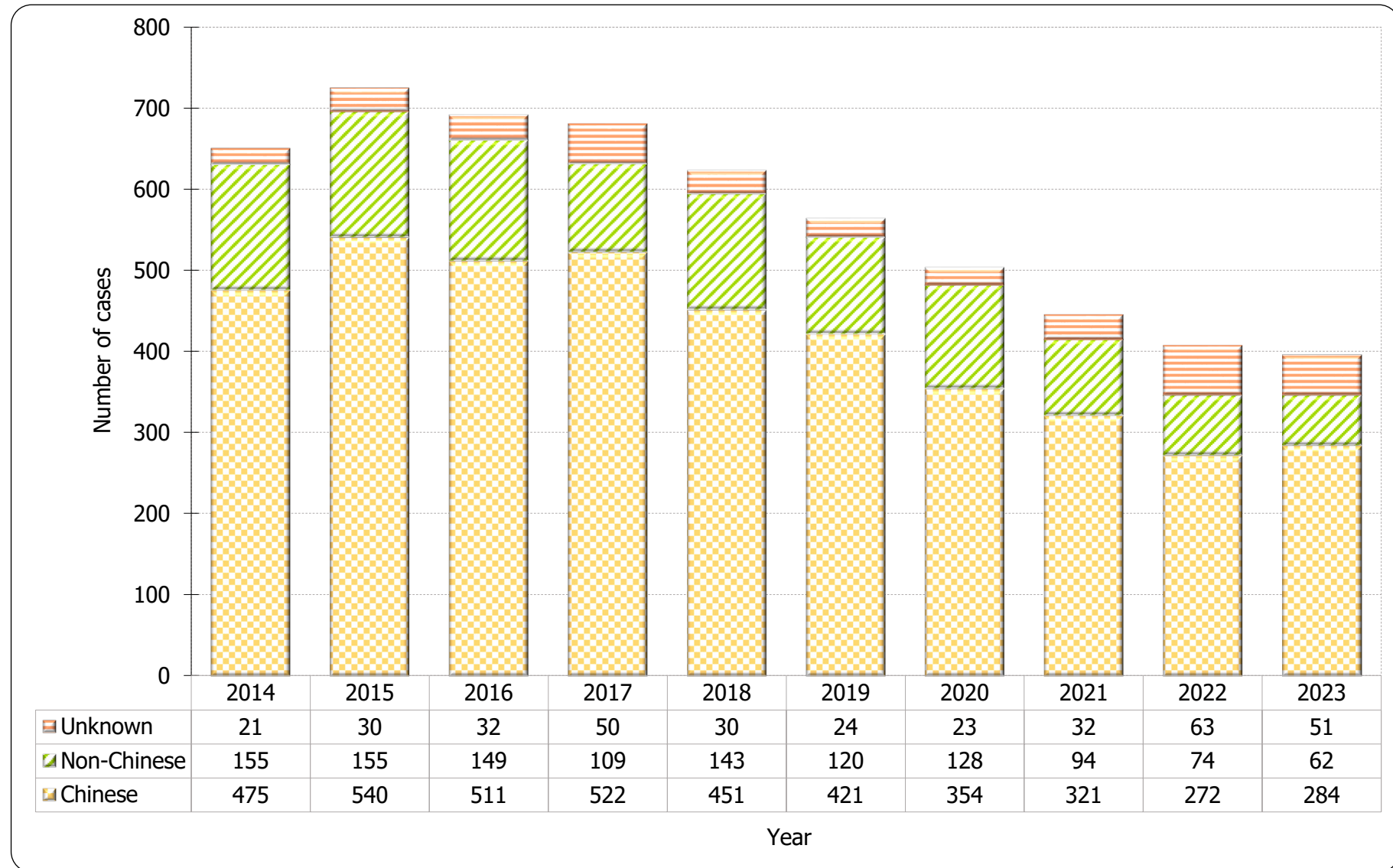
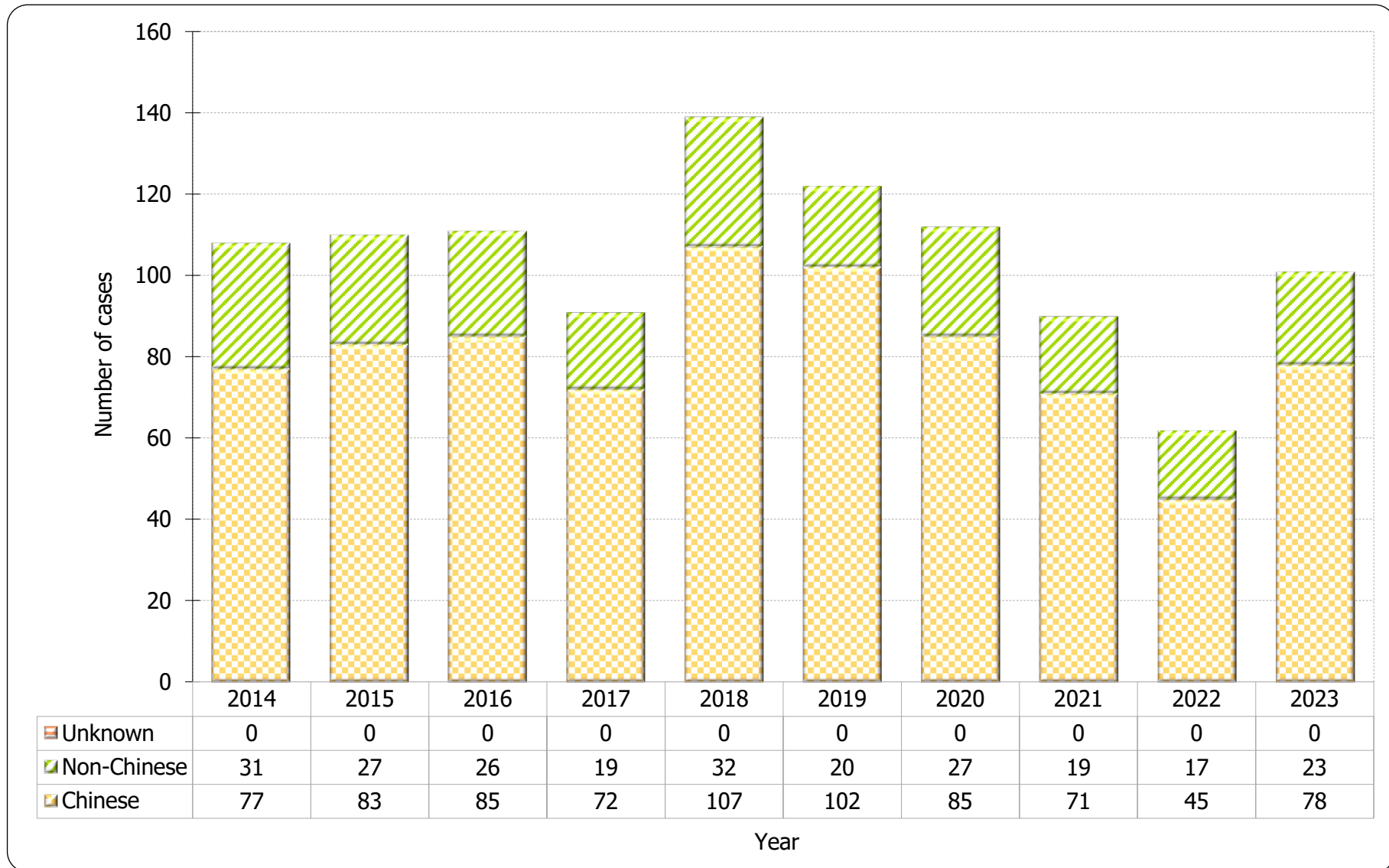


Table 3.2 Distribution of ethnicity of reported AIDS

	This quarter (Oct - Dec 2023)	Last quarter (Jul - Sep 2023)	Same quarter last year (Oct - Dec 2022)	Cumulative (1984 – 2023)
Chinese	8	22	7	1,915
Non-Chinese	6	6	2	568
<i>Asian</i>	3	5	2	403
<i>White</i>	3	1	0	110
<i>Black</i>	0	0	0	46
<i>Others</i>	0	0	0	9
Unknown	0	0	0	0
Total	14	28	9	2,483

Chart 3.2 Distribution of ethnicity of reported AIDS



4. Age distribution of reported HIV/AIDS

Table 4.1 Age distribution of reported HIV

	This quarter (Oct - Dec 2023)	Last quarter (Jul - Sep 2023)	Same quarter last year (Oct - Dec 2022)	Cumulative (1984 – 2023)
Adult	95	112	102	11,982
Child (age 13 or less)	0	1	0	56
Total	95	113	102	12,038

Chart 4.1 Age distribution of reported HIV

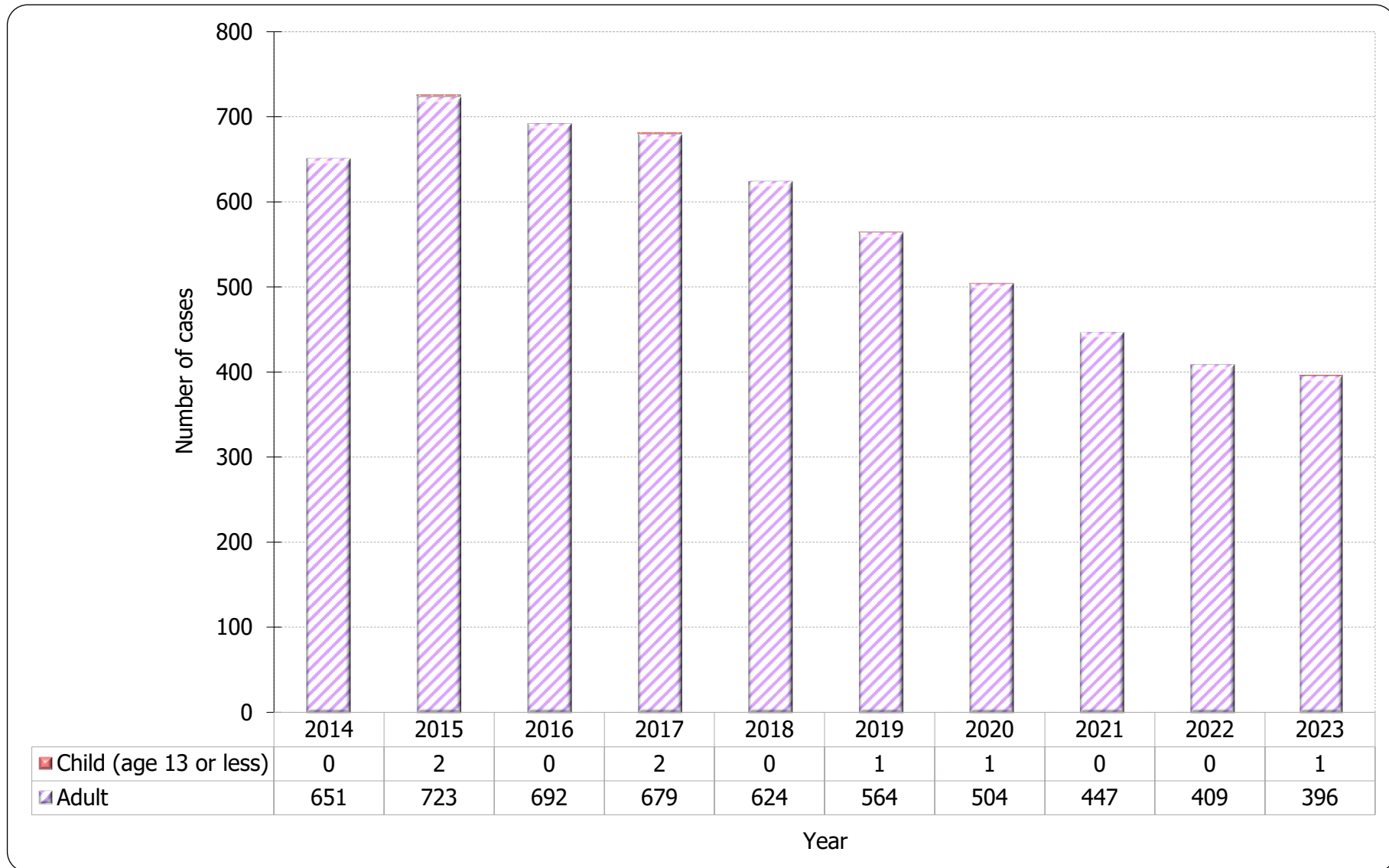


Chart 4.2 Age group & gender of total reported HIV

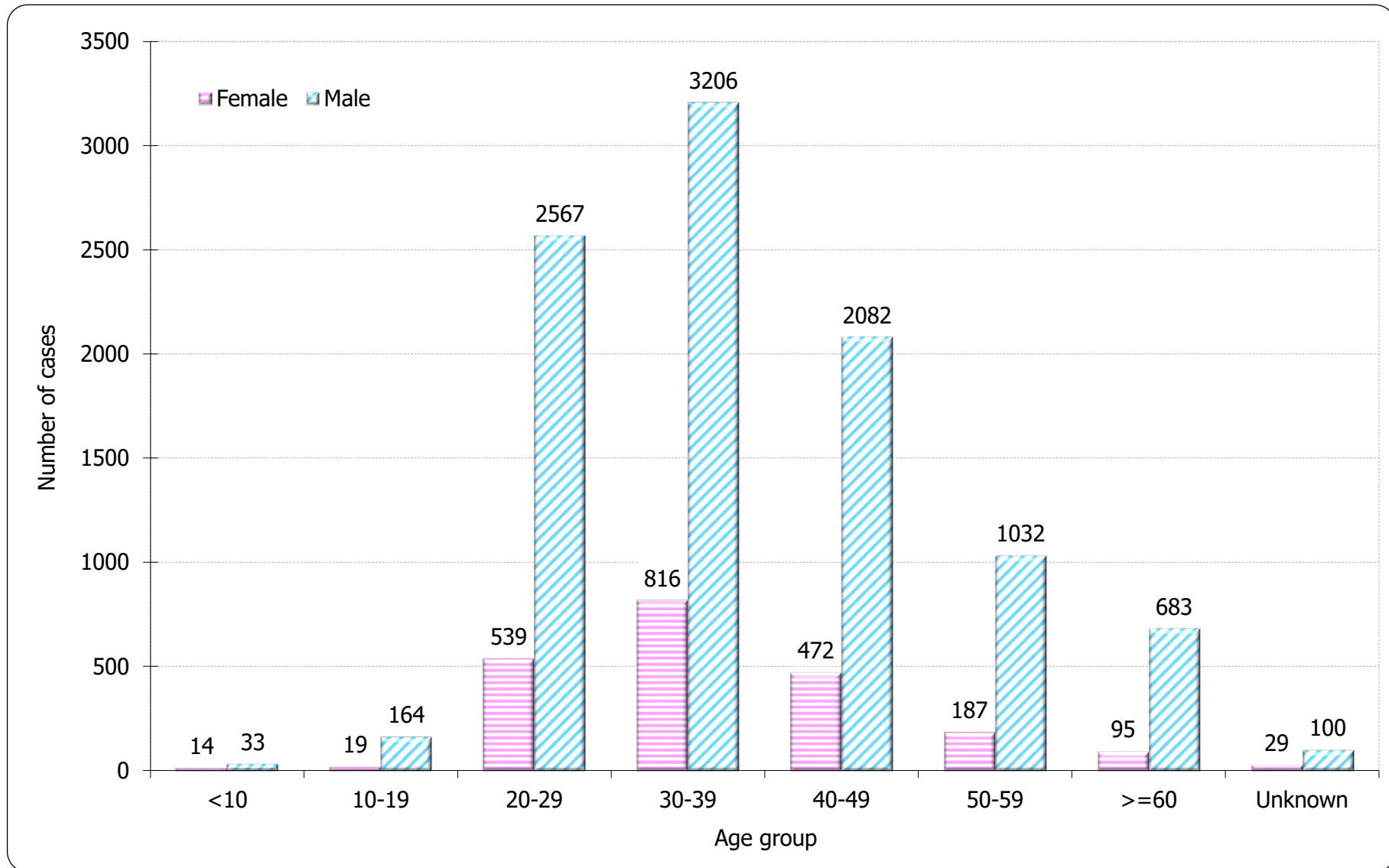


Table 4.2 Age distribution of reported AIDS

	This quarter (Oct - Dec 2023)	Last quarter (Jul - Sep 2023)	Same quarter last year (Oct - Dec 2022)	Cumulative (1984 – 2023)
Adult	14	28	9	2,469
Child (age 13 or less)	0	0	0	14
Total	14	28	9	2,483

Chart 4.3 Age distribution of reported AIDS

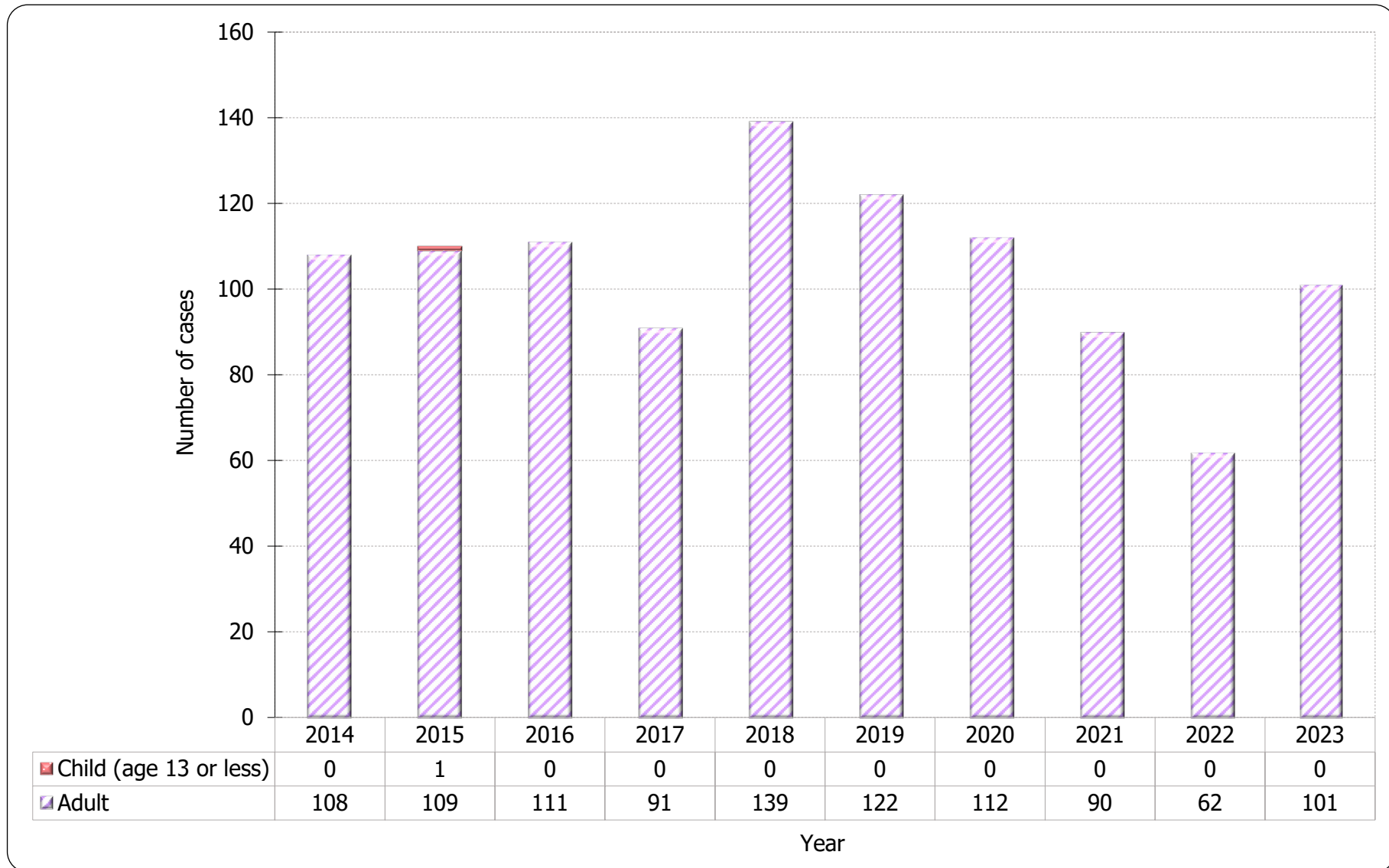
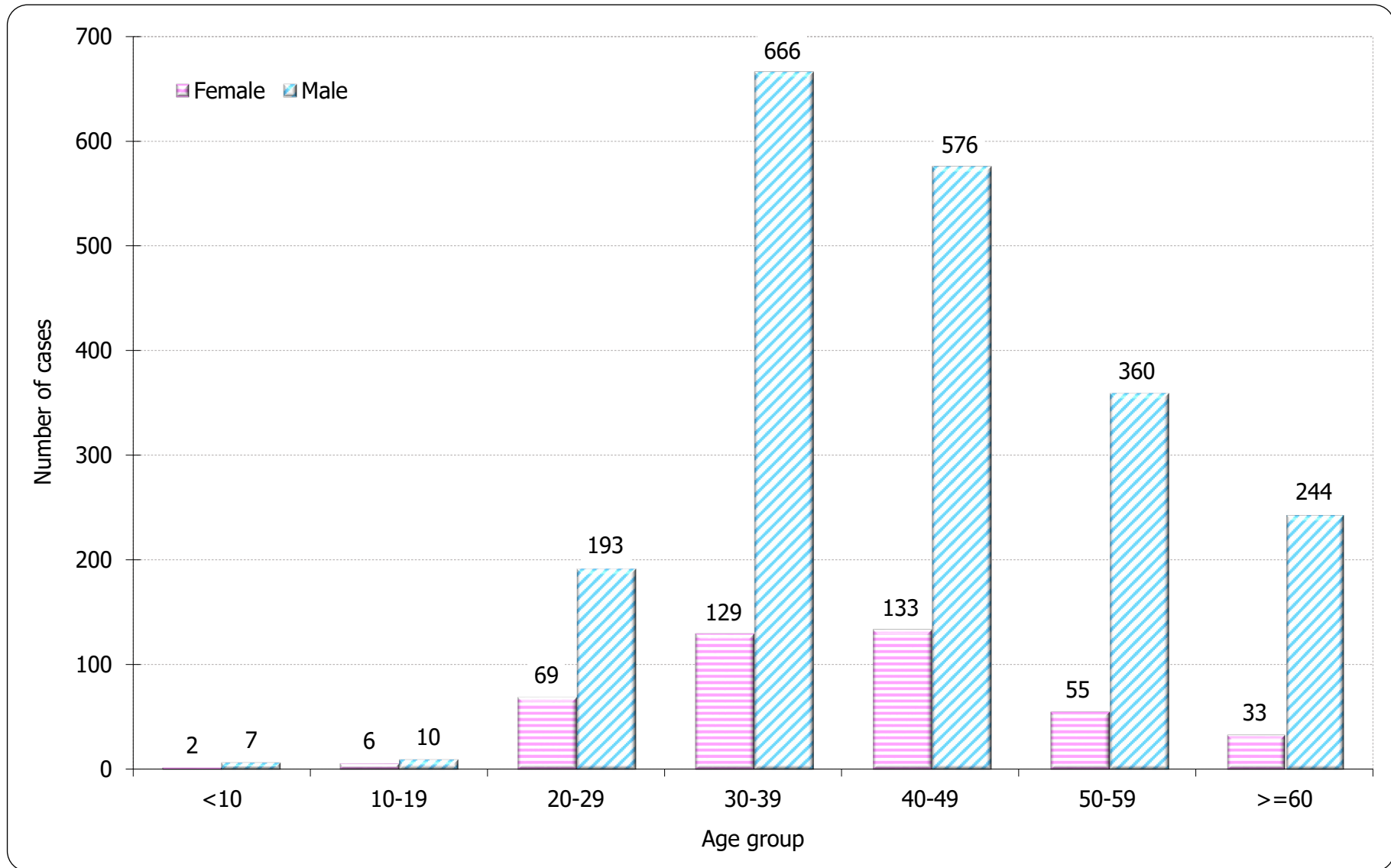


Chart 4.4 Age group & gender of total reported AIDS

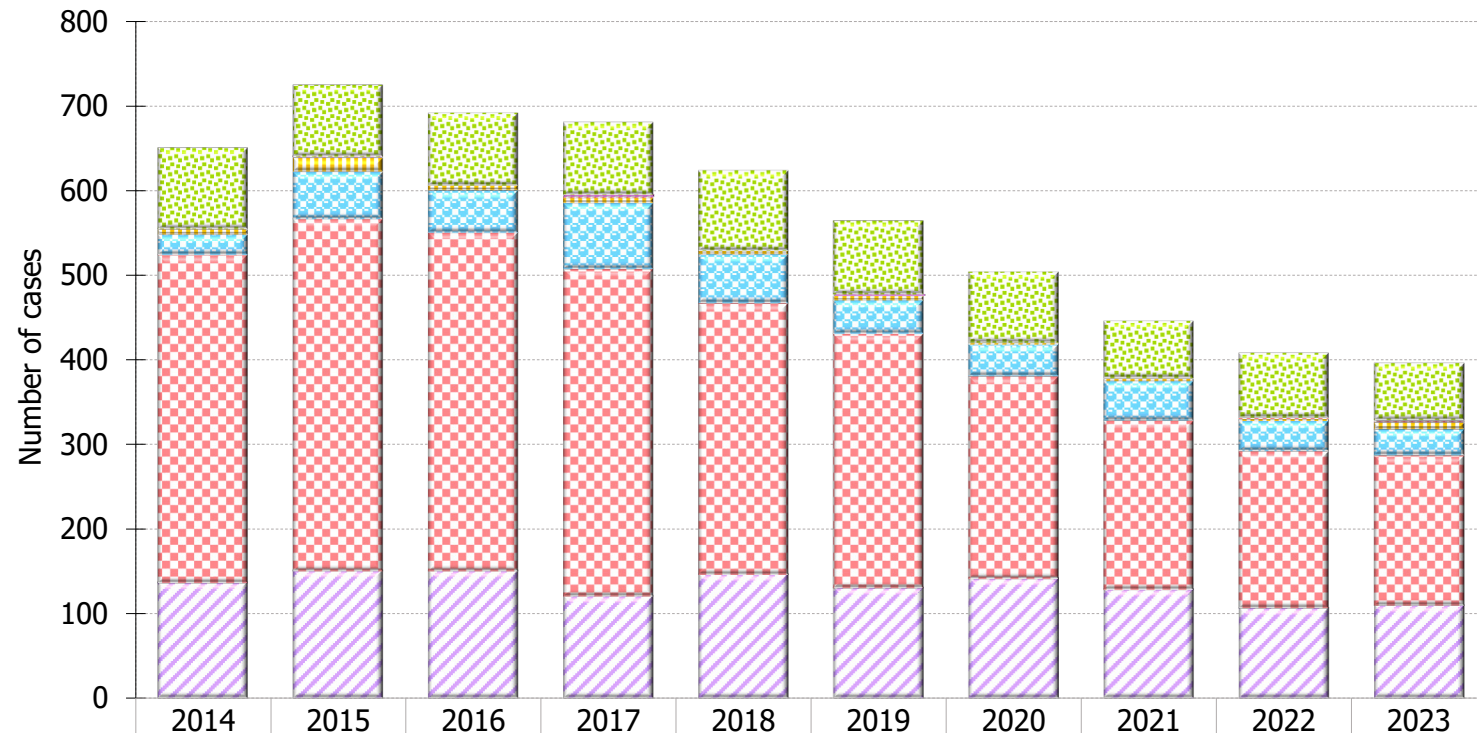


5. Exposure categories of reported HIV/AIDS

Table 5.1 Exposure categories of reported HIV

	This quarter (Oct - Dec 2023)	Last quarter (Jul - Sep 2023)	Same quarter last year (Oct - Dec 2022)	Cumulative (1984 – 2023)
Heterosexual	19	36	33	3,858
Homosexual	46	46	44	5,040
Bisexual	4	11	9	718
Injecting drug use	2	1	0	383
Blood / blood product infusion	0	0	0	87
Mother-to-child transmission	0	1	0	36
Undetermined	24	18	16	1,916
Total	95	113	102	12,038

Chart 5.1 Exposure categories of reported HIV



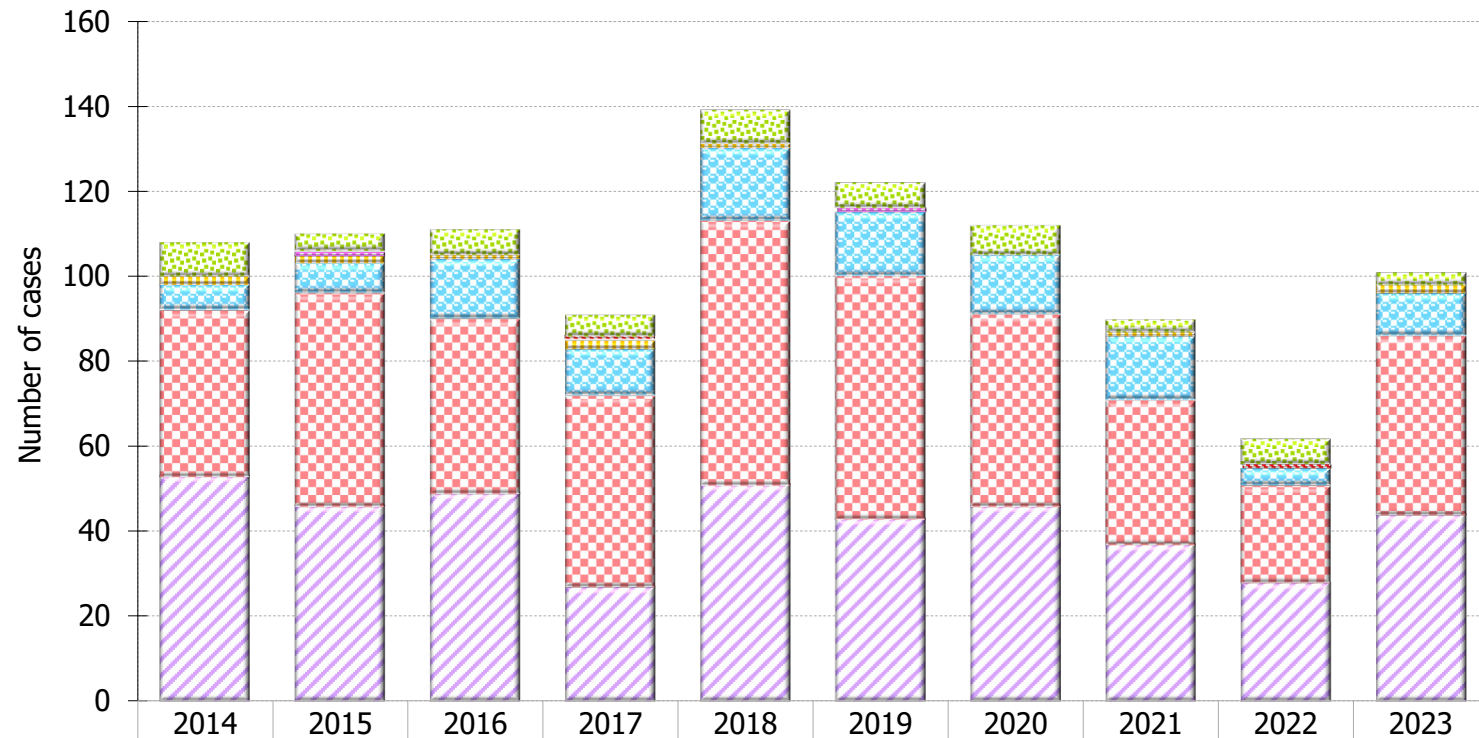
	2014	2015	2016	2017	2018	2019	2020	2021	2022	2023
Undetermined	96	85	86	86	95	87	84	68	77	68
Mother-to-child transmission	0	2	0	3	0	2	0	0	0	1
Blood contact	1	0	0	1	0	0	0	0	1	1
Injecting drug use	6	16	6	6	4	5	2	3	2	8
Bisexual	24	56	50	78	58	40	38	47	36	31
Homosexual	387	415	399	386	320	300	239	200	186	178
Heterosexual	137	151	151	121	147	131	142	129	107	110

Year

Table 5.2 Exposure categories of reported AIDS

	This quarter (Oct - Dec 2023)	Last quarter (Jul - Sep 2023)	Same quarter last year (Oct - Dec 2022)	Cumulative (1984 – 2023)
Heterosexual	6	13	4	1,246
Homosexual	7	9	4	794
Bisexual	1	4	0	174
Injecting drug use	0	0	0	70
Blood / blood product infusion	0	0	0	26
Mother-to-child transmission	0	0	0	11
Undetermined	0	2	1	162
Total	14	28	9	2,483

Chart 5.2 Exposure categories of reported AIDS



	2014	2015	2016	2017	2018	2019	2020	2021	2022	2023
Undetermined	8	4	6	5	8	6	7	3	6	3
Mother-to-child transmission	0	1	0	0	0	1	0	0	0	0
Blood contact	0	0	0	1	0	0	0	0	1	0
Injecting drug use	2	2	1	2	1	0	0	1	0	2
Bisexual	6	7	14	11	17	15	14	15	4	10
Homosexual	39	50	41	45	62	57	45	34	23	42
Heterosexual	53	46	49	27	51	43	46	37	28	44

Year

6. Ratio (heterosexual : homosexual / bisexual) of sexually acquired HIV infection in men

Table 6.1 Ratio of sexually acquired infection in men with reported HIV/AIDS (heterosexual : homo / bisexual) by quarter

	This quarter (Oct - Dec 2023)	Last quarter (Jul - Sep 2023)	Same quarter last year (Oct - Dec 2022)	Cumulative (1984 – 2023)
HIV	0.2 : 1	0.4 : 1	0.4 : 1	0.4 : 1
AIDS	0.4 : 1	0.7 : 1	0.8 : 1	0.9 : 1

Table 6.2 Ratio of sexually acquired infection in men with reported HIV/AIDS (heterosexual : homo / bisexual) by year

	2014	2015	2016	2017	2018	2019	2020	2021	2022	2023	1984 – 2023
HIV	0.2 : 1	0.2 : 1	0.2 : 1	0.1 : 1	0.2 : 1	0.2 : 1	0.3 : 1	0.3 : 1	0.3 : 1	0.3 : 1	0.4 : 1
AIDS	0.7 : 1	0.5 : 1	0.5 : 1	0.3 : 1	0.3 : 1	0.4 : 1	0.4 : 1	0.5 : 1	0.6 : 1	0.6 : 1	0.9 : 1

7. Injecting drug users in reported HIV/AIDS

Table 7.1 Injecting drug users in reported HIV/AIDS

	This quarter (Oct - Dec 2023)	Last quarter (Jul - Sep 2023)	Same quarter last year (Oct - Dec 2022)	Cumulative (1984 – 2023)
HIV (% of reported HIV)	2 2.1%	1 0.9%	0 0.0%	383 3.2%
AIDS (% of reported AIDS)	0 0.0%	0 0.0%	0 0.0%	70 2.8%

Table 7.2 Number of injecting drug user in reported HIV/AIDS by year

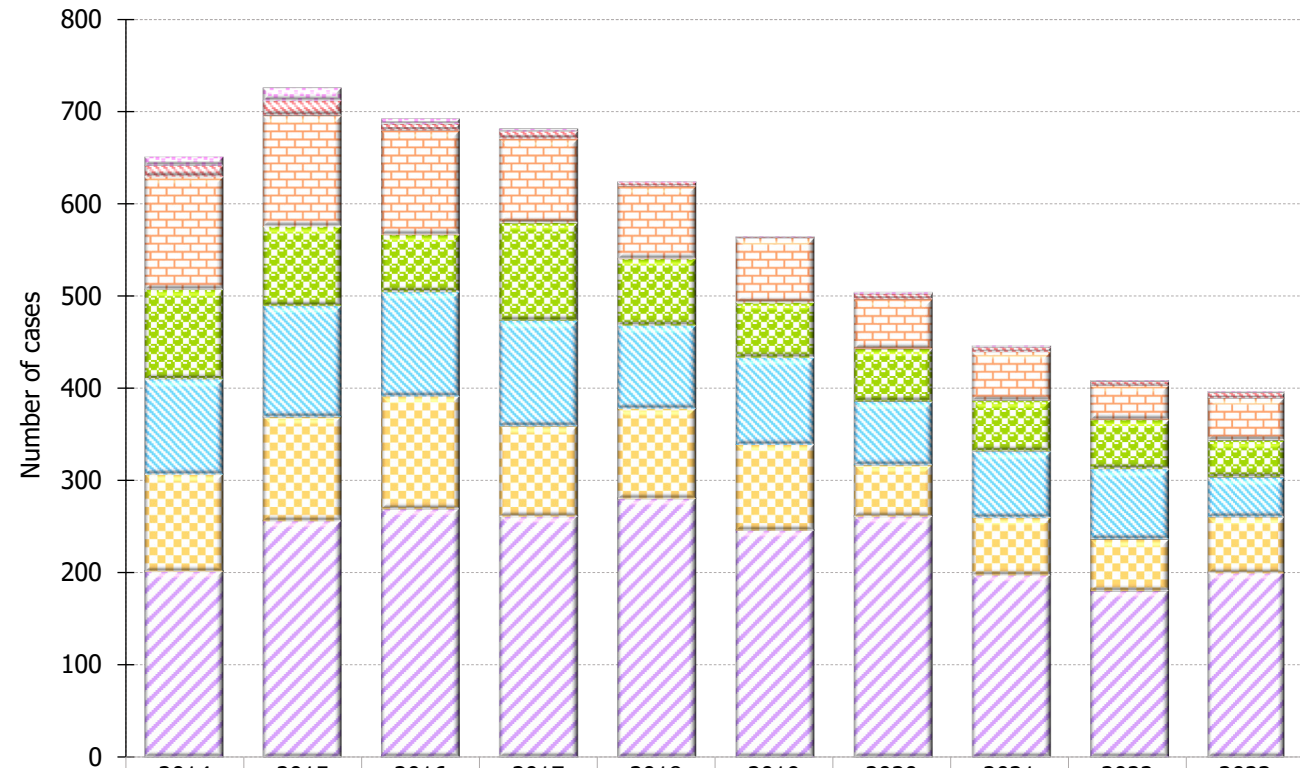
	2014	2015	2016	2017	2018	2019	2020	2021	2022	2023	1984 – 2023
HIV (% of reported HIV)	6 (0.9%)	16 (2.2%)	6 (0.9%)	6 (0.9%)	4 (0.6%)	5 (0.9%)	2 (0.4%)	3 (0.7%)	2 (0.5%)	8 (2.0%)	383 (3.2%)
AIDS (% of reported AIDS)	2 (1.9%)	2 (1.8%)	1 (0.9%)	2 (2.2%)	1 (0.7%)	0 (0.0%)	0 (0.0%)	1 (1.1%)	0 (0.0%)	2 (2.0%)	70 (2.8%)

8. Source of referral of reported HIV/AIDS

Table 8.1 Source of referral of reported HIV

	This quarter (Oct - Dec 2023)	Last quarter (Jul - Sep 2023)	Same quarter last year (Oct - Dec 2022)	Cumulative (1984 – 2023)
Public hospitals / clinics / laboratories	42	61	50	5,020
Private hospitals / clinics / laboratories	14	21	7	2,265
Social Hygiene Clinics	11	13	15	1,743
DH AIDS Unit	8	9	13	1,509
AIDS service organisations (NGOs)	18	7	16	1,178
Hong Kong Red Cross Blood Transfusion Service	2	2	1	186
Drug rehabilitation services	0	0	0	137
Total	95	113	102	12,038

Chart 8.1 Source of referral of reported HIV



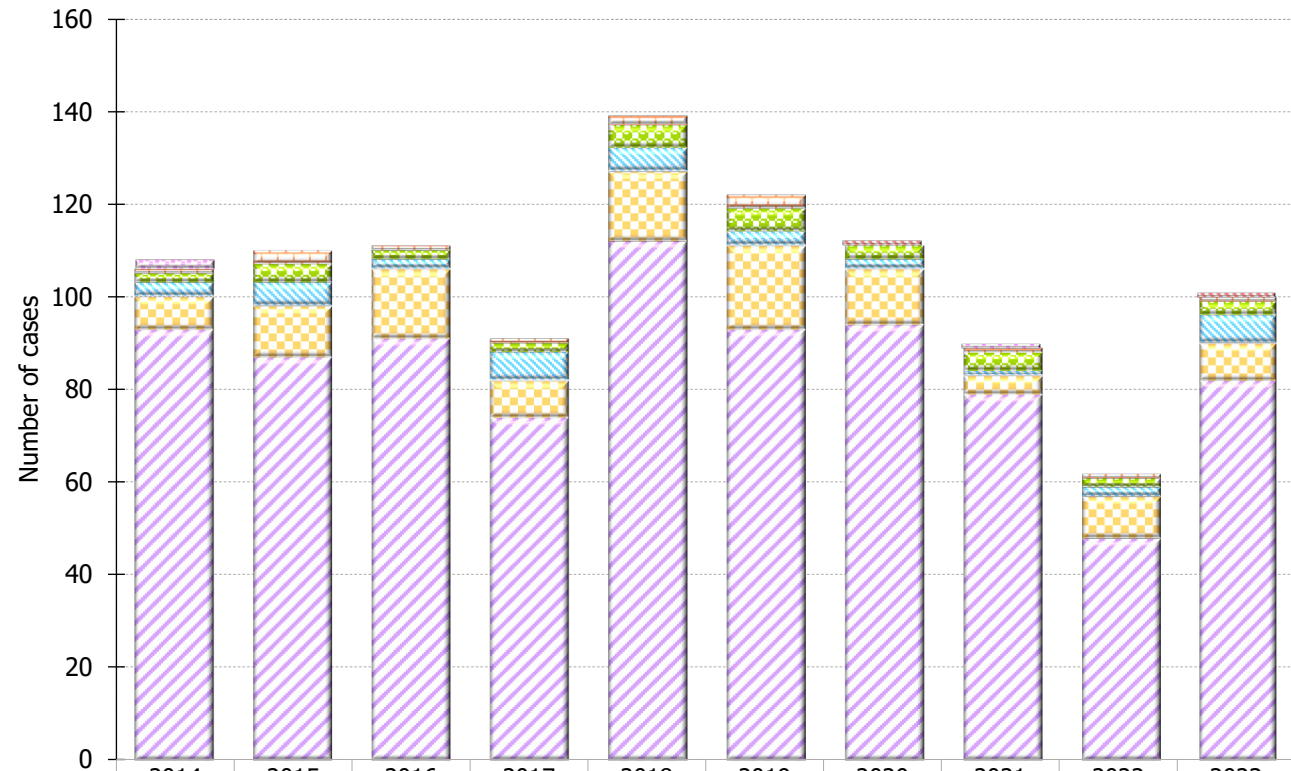
	2014	2015	2016	2017	2018	2019	2020	2021	2022	2023
Drug rehabilitation services	10	14	6	3	1	1	2	2	1	1
Hong Kong Red Cross Blood Transfusion Service	12	16	7	8	4	1	6	5	4	6
AIDS service organisations (NGOs)	122	120	113	91	79	70	54	53	38	46
DH AIDS Unit	97	86	62	106	72	60	57	55	53	40
Social Hygiene Clinics	103	120	113	114	90	94	69	72	76	43
Private hospitals / clinics / laboratories	105	113	122	98	98	93	56	62	56	61
Public hospitals / clinics / laboratories	202	256	269	261	280	246	261	198	181	200

Year

Table 8.2 Source of referral of reported AIDS

	This quarter (Oct - Dec 2023)	Last quarter (Jul - Sep 2023)	Same quarter last year (Oct - Dec 2022)	Cumulative (1984 – 2023)
Public hospitals / clinics / laboratories	9	24	9	1,926
Private hospitals / clinics / laboratories	2	2	0	308
Social Hygiene Clinics	2	1	0	87
DH AIDS Unit	1	1	0	123
AIDS service organisations (NGOs)	0	0	0	21
Hong Kong Red Cross Blood Transfusion Service	0	0	0	11
Drug rehabilitation services	0	0	0	7
Total	14	28	9	2,483

Chart 8.2 Source of referral of Reported AIDS



	2014	2015	2016	2017	2018	2019	2020	2021	2022	2023
Drug rehabilitation services	2	0	0	0	0	0	0	1	0	0
Hong Kong Red Cross Blood Transfusion Service	0	0	0	0	0	0	1	0	0	1
AIDS service organisations (NGOs)	1	3	1	1	2	3	0	1	1	1
DH AIDS Unit	2	4	2	2	5	5	3	4	2	3
Social Hygiene Clinics	3	5	2	6	5	3	2	1	2	6
Private hospitals / clinics / laboratories	7	11	15	8	15	18	12	4	9	8
Public hospitals / clinics / laboratories	93	87	91	74	112	93	94	79	48	82

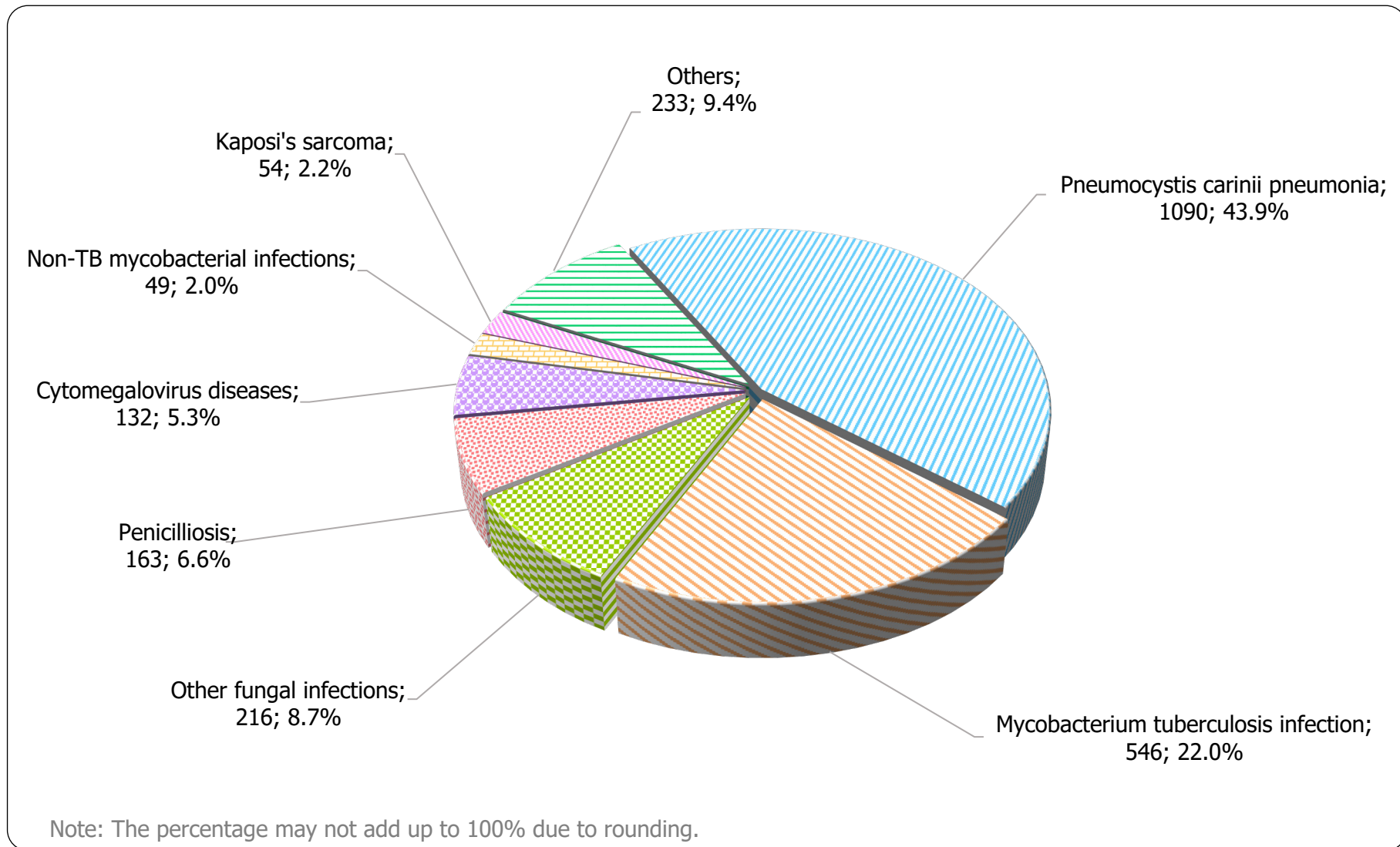
Year

9. Distribution of AIDS defining illnesses

Table 9.1 Distribution of AIDS defining illness of reported AIDS

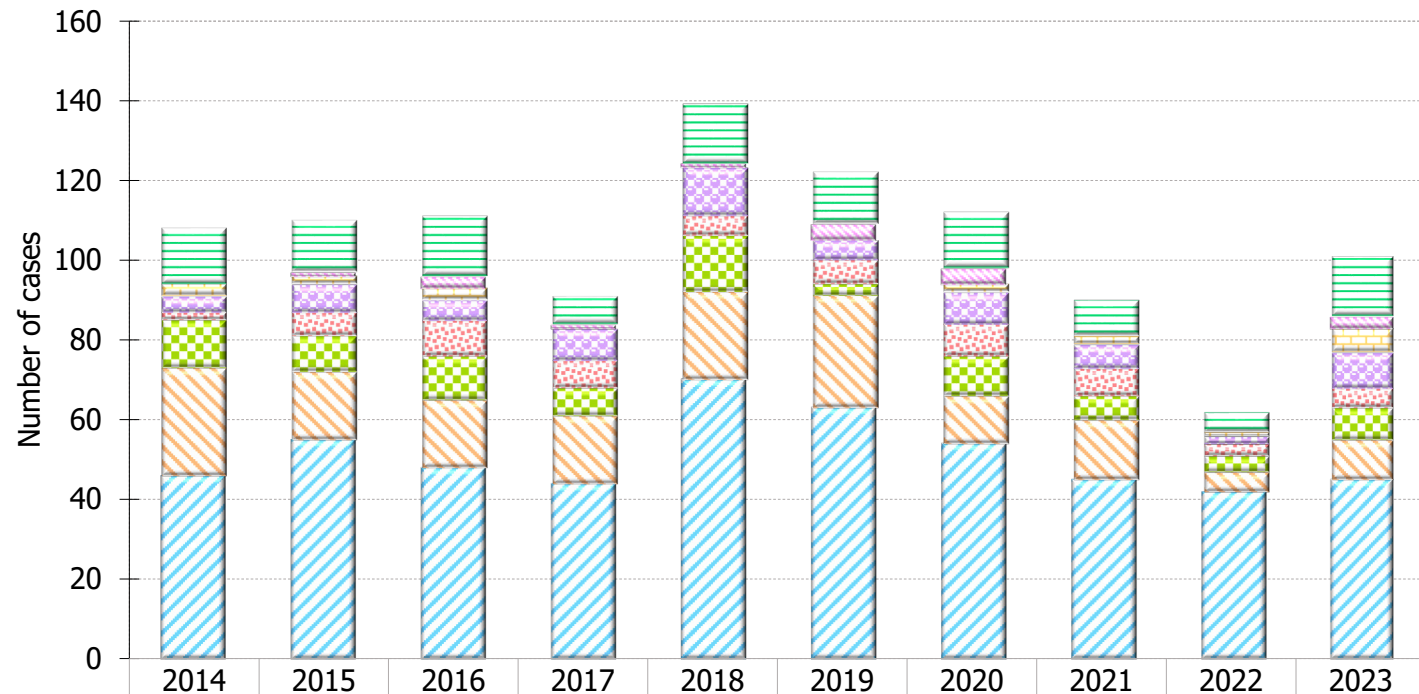
	This quarter (Oct - Dec 2023)	Last quarter (Jul - Sep 2023)	Same quarter last year (Oct - Dec 2022)	Cumulative (1984 – 2023)
<i>Pneumocystis carinii pneumonia</i>	5	14	6	1,090
<i>Mycobacterium tuberculosis</i>	1	1	1	546
Other fungal infections	0	3	0	216
Penicilliosis	0	1	0	163
Cytomegalovirus diseases	4	1	0	132
Non-TB mycobacterial infections	1	2	0	49
Kaposi's sarcoma	2	0	0	54
Others	1	6	2	233
Total	14	28	9	2,483

Chart 9.1 AIDS defining illness of total reported AIDS



Format: [ADI; Number; %]

Chart 9.2 AIDS defining illness of reported AIDS by year



	2014	2015	2016	2017	2018	2019	2020	2021	2022	2023
Others	14	13	15	7	15	13	14	9	5	15
Kaposi's sarcoma	0	1	3	1	1	4	4	0	0	3
Non-TB mycobacterial infections	3	2	3	0	0	0	2	2	1	6
Cytomegalovirus diseases	4	7	5	8	12	5	8	6	2	9
Penicilliosis	2	6	9	7	5	6	8	7	3	5
Other fungal infections	12	9	11	7	14	3	10	6	4	8
Tuberculosis	27	17	17	17	22	28	12	15	5	10
Pneumocystis carinii pneumonia	46	55	48	44	70	63	54	45	42	45

Year

10. Reported sexually transmitted infections (STIs) diagnosed in Social Hygiene Service

Table 10.1 Summary table on the reported STIs diagnosed in Social Hygiene Service

	This quarter (Oct - Dec 2023)	Last quarter (Jul - Sep 2023)	Same quarter last year (Oct - Dec 2022)	In year 2023
Syphilis				
<i>Primary</i>	23	23	22	75
<i>Secondary</i>	68	55	56	230
<i>Early latent</i>	37	47	49	207
<i>Late latent</i>	119	138	117	486
<i>Late (cardiovascular / neuro / ocular)</i>	4	1	0	12
<i>Congenital (early)</i>	0	0	0	0
<i>Congenital (late)</i>	0	0	0	0
<i>Others *</i>	8	5	0	18
Syphilis total	259	269	244	1,028

(to be cont'd)

Table 10.1 (cont'd)

	This quarter (Oct - Dec 2023)	Last quarter (Jul - Sep 2023)	Same quarter last year (Oct - Dec 2022)	In year 2023
Gonorrhoea	391	384	354	1,575
Non-gonococcal urethritis (Male)	267	274	359	1,159
Non-specific genital infection (Female)	273	316	363	1,199
Chlamydia trachomatis *	487	491	404	1,804
Genital wart	268	309	266	1,104
Herpes genitalis	128	118	126	464
Pediculosis pubis	69	44	28	179
Trichomonas	47	54	57	180
Genital ulcer	142	75	2	249
Mycoplasma genitalium *	16	20	9	67
Chancroid / Lymphogranuloma venereum	1	0	0	2
Others	49	102	90	264
Total	2,397	2,456	2,302	9,274

* Added as a new category since 2022 Q3

11. Gender distribution of reported STIs

Table 11.1 Gender distribution of selected STI reported by Social Hygiene Service

	This quarter (Oct - Dec 2023)	Last quarter (Jul - Sep 2023)	Same quarter last year (Oct - Dec 2022)	In year 2023
Primary Syphilis				
Male (M)	23	23	21	75
Female (F)	0	0	1	0
M : F	N.A.	N.A.	21.0 : 1	N.A.
Gonorrhoea				
Male (M)	338	334	305	1,393
Female (F)	53	50	49	182
M : F	6.4 : 1	6.7 : 1	6.2 : 1	7.7 : 1
NGU / NSGI *				
Male (M)	267	274	359	1,159
Female (F)	273	316	363	1,199
M : F	1.0 : 1	0.9 : 1	1.0 : 1	1.0 : 1

(to be cont'd)

Table 11.1 (cont'd)

	This quarter (Oct - Dec 2023)	Last quarter (Jul - Sep 2023)	Same quarter last year (Oct - Dec 2022)	In year 2023
CT *				
Male (M)	317	338	320	1,285
Female (F)	170	153	84	519
M : F	1.9 : 1	2.2 : 1	3.8 : 1	2.5 : 1
Genital wart				
Male (M)	204	252	206	867
Female (F)	64	57	60	237
M : F	3.2 : 1	4.4 : 1	3.4 : 1	3.7 : 1
<i>Herpes genitalis</i>				
Male (M)	79	80	77	316
Female (F)	49	38	49	148
M : F	1.6 : 1	2.1 : 1	1.6 : 1	2.1 : 1

* NGU = Non-gonococcal urethritis

NSGI = Non-specific genital infection

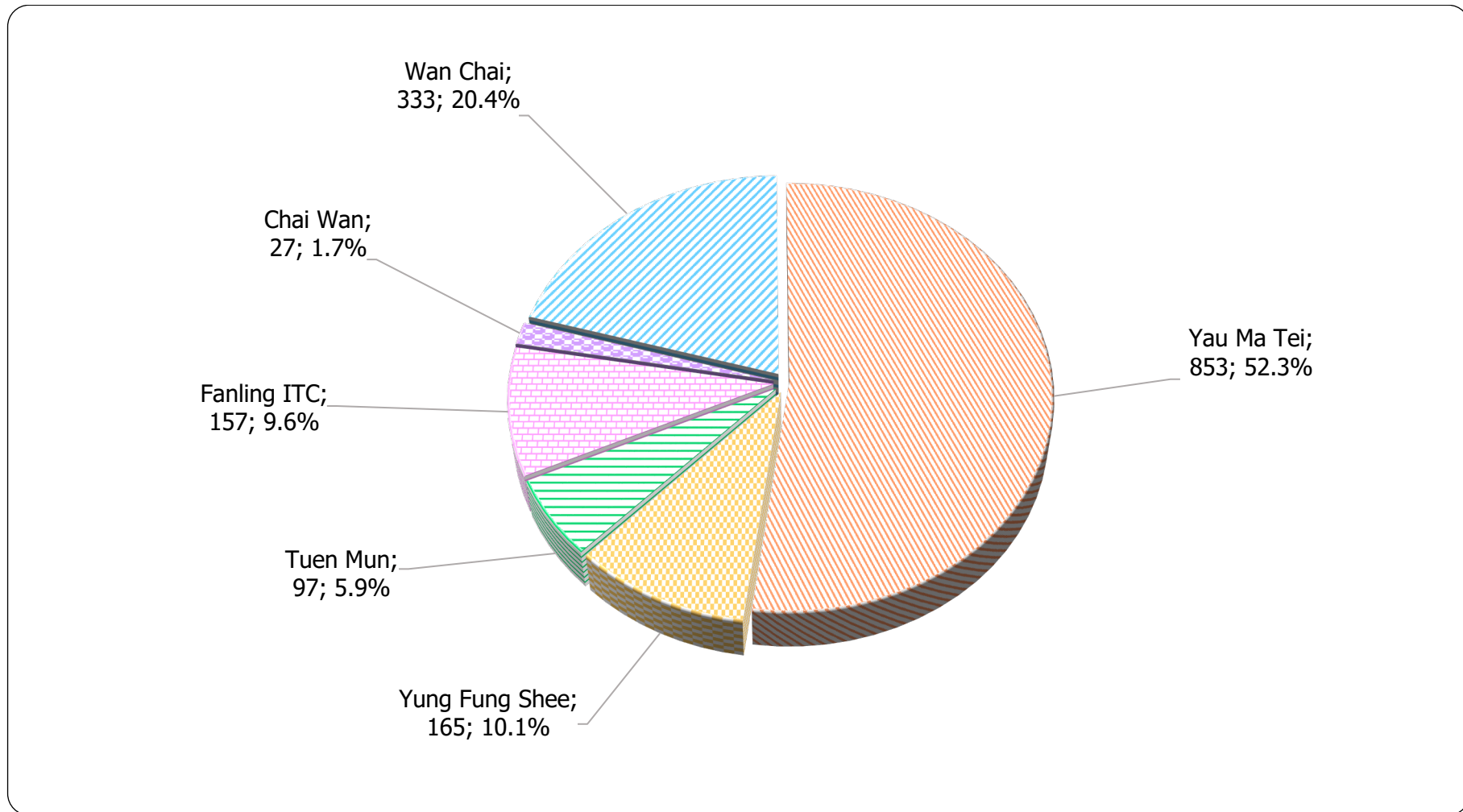
CT = Chlamydia trachomatis

Table 11.2 Gender distribution of reported STI by clinic

	This quarter (Oct - Dec 2023)		Last quarter (Jul - Sep 2023)		Same quarter last year (Oct - Dec 2022)		In year 2023	
	Male	Female	Male	Female	Male	Female	Male	Female
Chai Wan	27	3	20	10	0	0	47	13
Wan Chai	333	164	326	176	327	381	1,290	856
Yau Ma Tei	853	373	832	339	769	0	3,344	1,015
Yung Fung Shee	165	74	206	76	163	144	662	333
Tuen Mun	97	80	160	79	135	112	493	307
Fanling ITC	157	71	147	85	148	123	599	315
Total	1,632	765	1,691	765	1,542	760	6,435	2,839

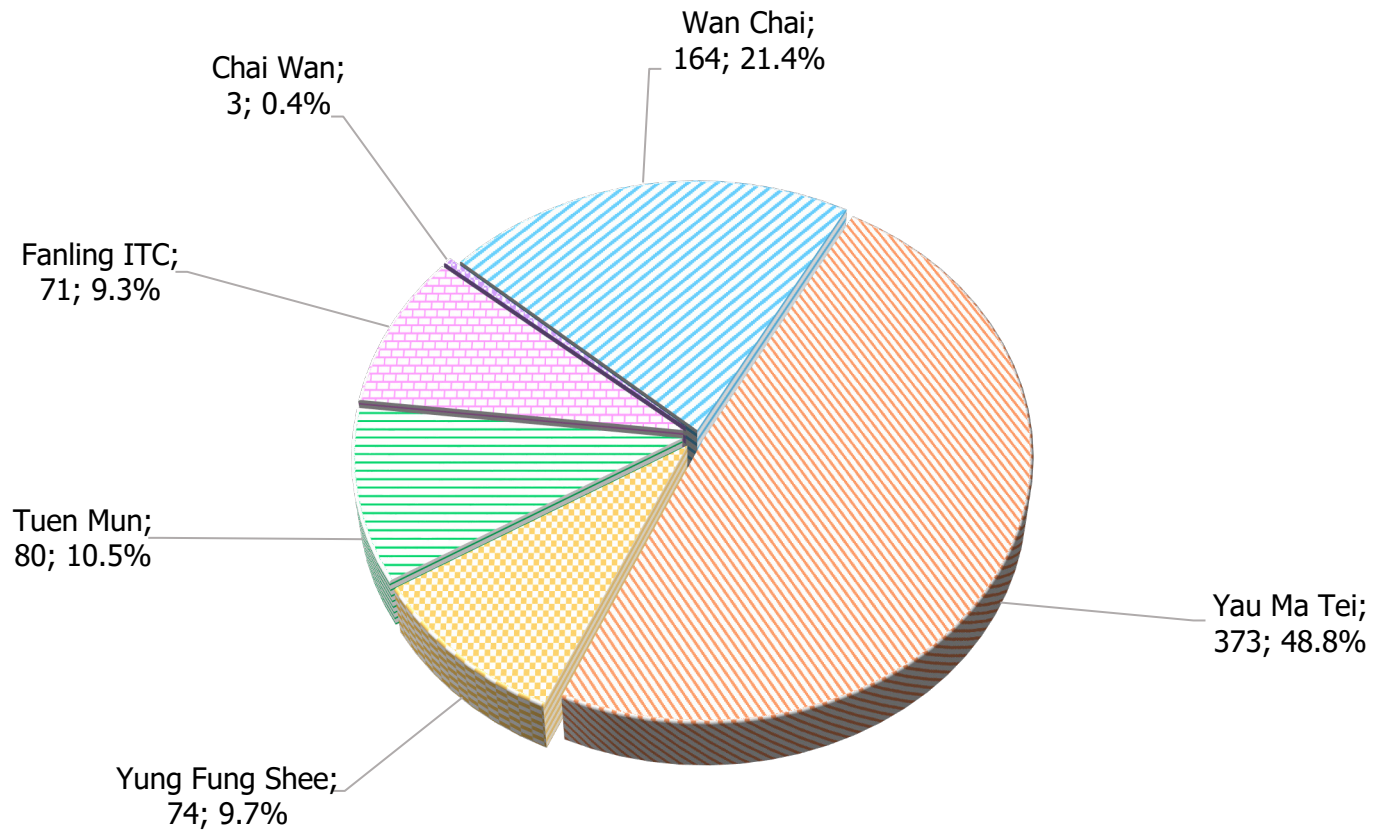
12. Clinic distribution

Chart 12.1 Number of newly report STI in Q4 2023 by clinic (male clients)



Format: [Clinic; Number; %]

Chart 12.2 Number of newly report STI in Q4 2023 by clinic (female clients)



Note: The percentage may not add up to 100% due to rounding.

Format: [Clinic; Number; %]